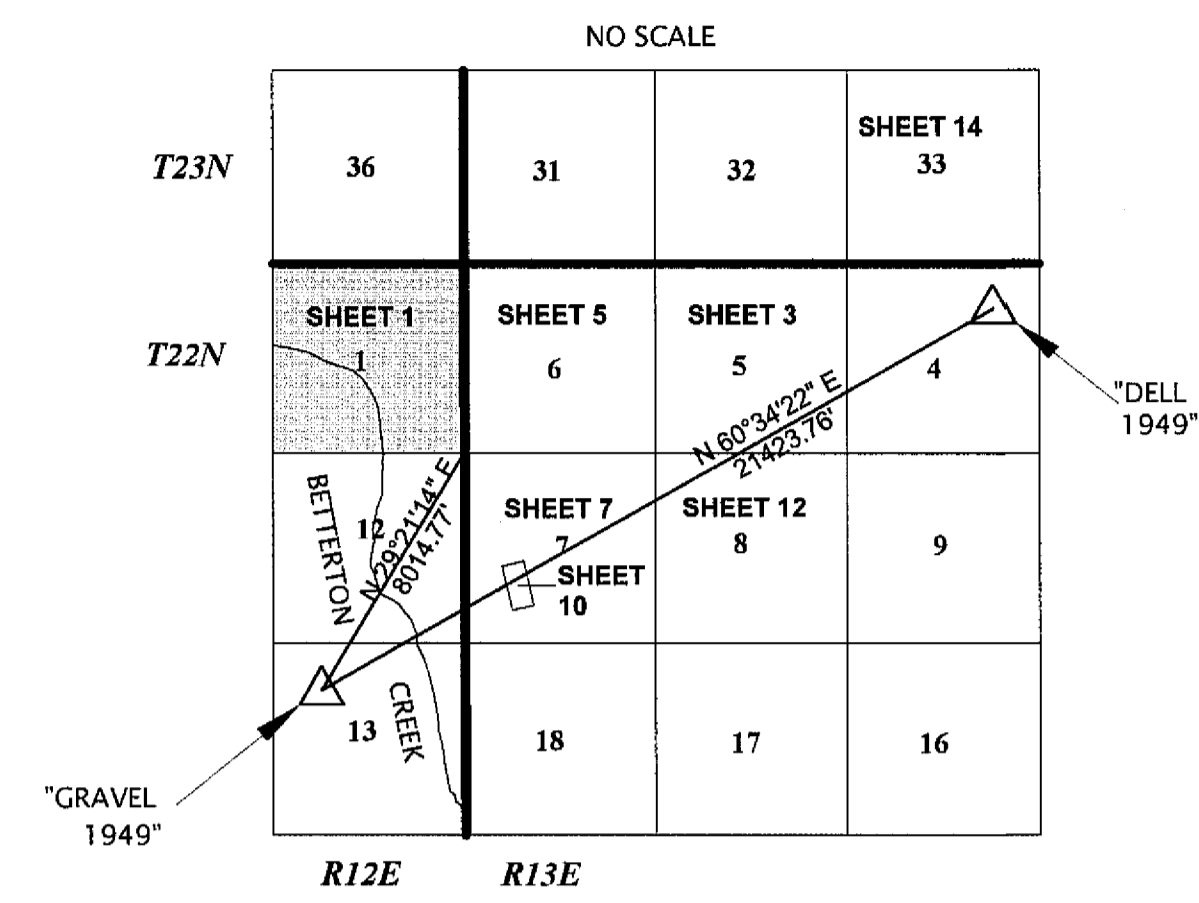


PROJECT LOCATION & CONTROL SCHEME



GENERAL NOTES

A STANDARD UNITED STATES FOREST SERVICE (USFS) DRIVE-IN MONUMENT IS A 5/8" DIAMETER REBAR WITH A 3/4" ALUMINUM CAP EDGE-MARKED WITH THE USFS LOGO.

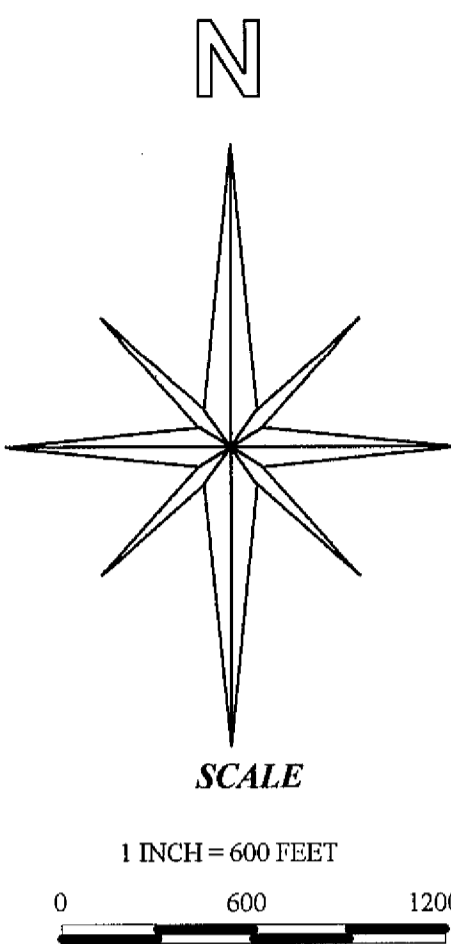
A STANDARD BUREAU OF LAND MANAGEMENT (BLM) MONUMENT IS A 2-1/2" DIAMETER STEEL PIPE, 28" LONG WITH A 3-1/2" BRASS CAP EDGE-MARKED WITH THE BLM LOGO.

SURVEY HISTORY

R#	NAME	DATE	REMARKS
R1	D. HALL	1881	GLO
R2	G. HENDERSON	1974	4RS54
R3	J. HAMBY	1986	7RS64

CALIFORNIA COORDINATE SYSTEM OF 1983 (CCS83), ZONE 1

CORNER	NORTHING	EASTING
1	1816031.2942	6958089.2536
2	1816068.1386	6960775.1976
3	1816104.9830	6963461.1416
4	1813472.9905	6963511.3420
6	1810805.2312	6963552.8851
8	1810739.3664	6960842.0430
10	1810697.1988	6958156.7136
12	1813340.4572	6958123.2844



BASIS OF BEARING

MEASURED BEARINGS AND DISTANCES ARE GRID. THEY ARE BASED ON THE CALIFORNIA COORDINATE SYSTEM OF 1983(CCS83), ZONE 1.

θ AT THE "DELL" IS 00°58'10.36058" MULTIPLY GRID DISTANCES BY 1.000174 TO GET GROUND DISTANCES.

CONTROL WAS DONE WITH GPS, TRIMBLE NAVIGATION, 4000 ST, SINGLE FREQUENCY RECEIVERS. CONTROL WAS BROUGHT IN USING THE FOLLOWING STATIONS:

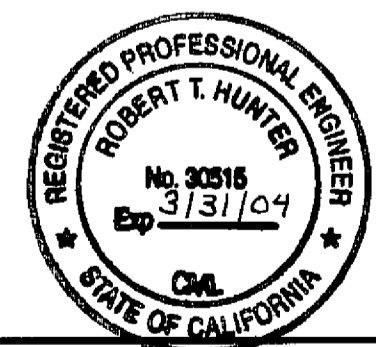
"GRAVEL 1949"
 LATITUDE: 39°46'22.92395" N NORTH: 1803819.4802
 LONGITUDE: 120°35'03.32548" W EAST: 6959624.0422

"DELL 1949"
 LATITUDE: 39°48'03.87786" N NORTH: 1814345.3519
 LONGITUDE: 120°31'02.11293" W EAST: 6978283.7269

LATITUDES AND LONGITUDES AS PUBLISHED BY NATIONAL GEODETIC SURVEYS (NGS) IN FEBRUARY 1987.

LEGEND

- FOUND CORNER
- SET CORNER
- PROPERTY BOUNDARY MARKED AND POSTED



SURVEYOR'S STATEMENT

This map correctly represents a survey made by me or under my direction in conformance with the requirements of the Land Surveyors' Act at the request of Plumas National Forest in MAY 23, 2000.
 William Glenn Snow L.S. 5623
 License Exp. Date 12/31/02

COUNTY SURVEYOR'S STATEMENT

This map has been examined in accordance with Section 8766 of the Land Surveyors' Act this 6TH day of June, 2000.
 R. Tom Hunter
 R. Tom Hunter R.C.E. 30515
 Plumas County Surveyor
 License Exp. Date 03/31/04

RECORDER'S STATEMENT

Filed this 6TH day of June, 2000 at 8:45 A.M. in Book 11 of Records of Surveys, at page 110-132, at the request of the County Surveyor.
 Fee: \$ 36.00
 File No: 3497
 Judith Wells
 County Recorder
 By: Debra A. Arsen
 Deputy

RECORD OF SURVEY

SECTION 33 T23N R13E, SECTIONS 5,6,7&8 T22N R13E,
 SECTION 1 T22N R12E,MDM
 PLUMAS COUNTY, CALIFORNIA
 FOR
 PLUMAS NATIONAL FOREST
 PO BOX 11500 QUINCY, CALIFORNIA 95971
 DRAWN BY: R.KNOETTGEN & BILL SNOW
 SHEET 1 OF 15