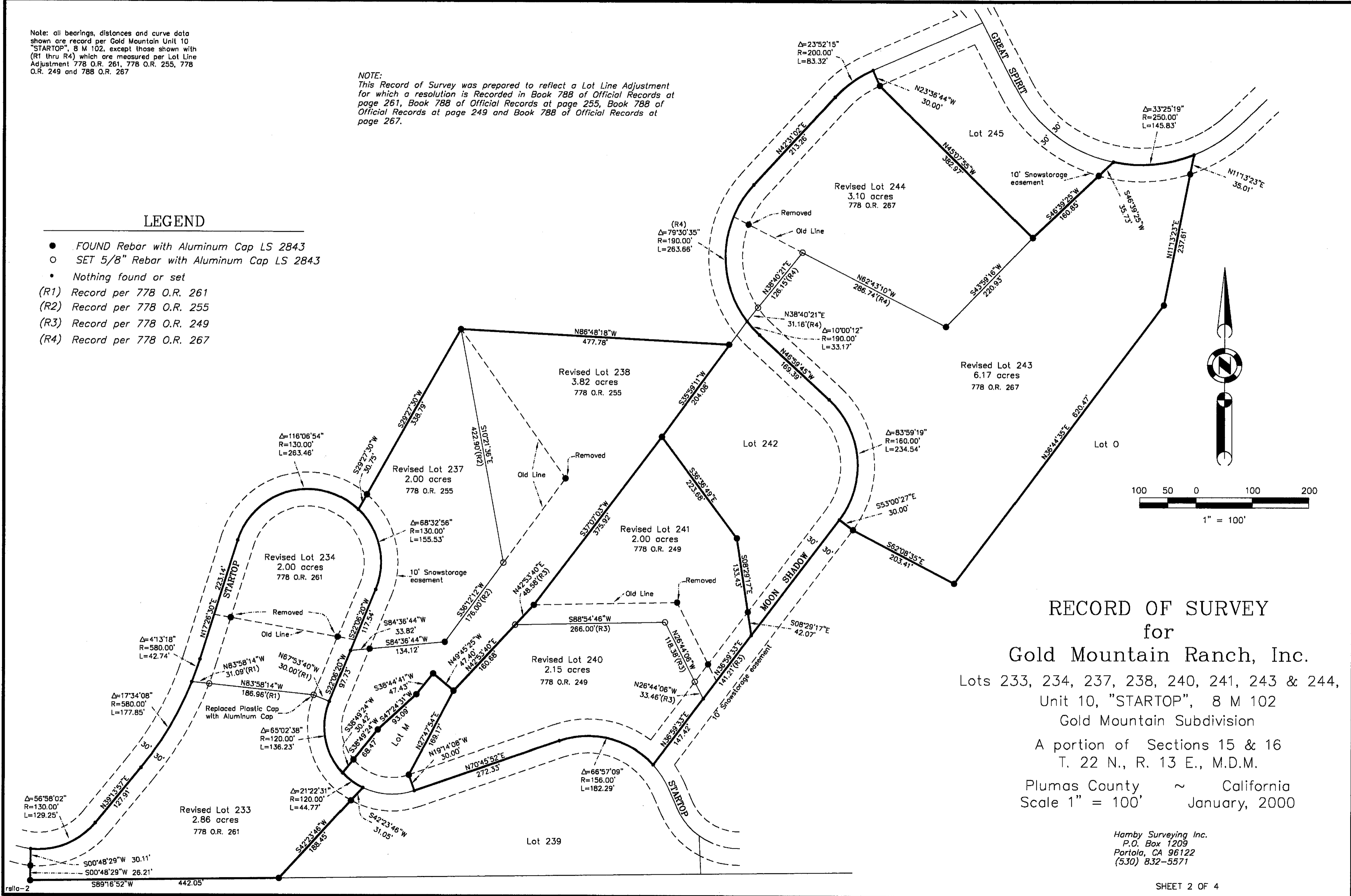


Note: all bearings, distances and curve data shown are record per Gold Mountain Unit 10 "STARTOP", 8 M 102, except those shown with (R1 thru R4) which are measured per Lot Line Adjustment 778 O.R. 261, 778 O.R. 255, 778 O.R. 249 and 778 O.R. 267

NOTE: This Record of Survey was prepared to reflect a Lot Line Adjustment for which a resolution is Recorded in Book 788 of Official Records at page 261, Book 788 of Official Records at page 255, Book 788 of Official Records at page 249 and Book 788 of Official Records at page 267.

LEGEND

- FOUND Rebar with Aluminum Cap LS 2843
- SET 5/8" Rebar with Aluminum Cap LS 2843
- Nothing found or set
- (R1) Record per 778 O.R. 261
- (R2) Record per 778 O.R. 255
- (R3) Record per 778 O.R. 249
- (R4) Record per 778 O.R. 267



RECORD OF SURVEY  
for  
Gold Mountain Ranch, Inc.

Lots 233, 234, 237, 238, 240, 241, 243 & 244,  
Unit 10, "STARTOP", 8 M 102  
Gold Mountain Subdivision  
A portion of Sections 15 & 16  
T. 22 N., R. 13 E., M.D.M.  
Plumas County ~ California  
Scale 1" = 100' January, 2000

Hamby Surveying Inc.  
P.O. Box 1209  
Portola, CA 96122  
(530) 832-5571