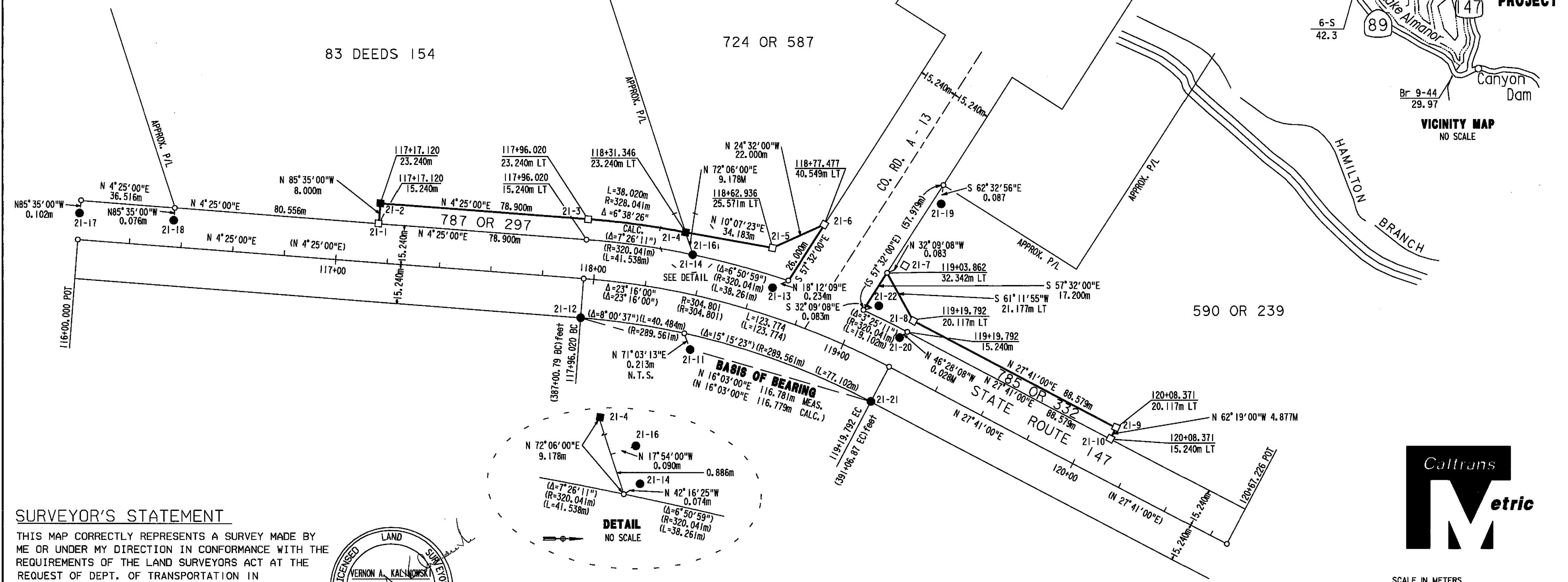
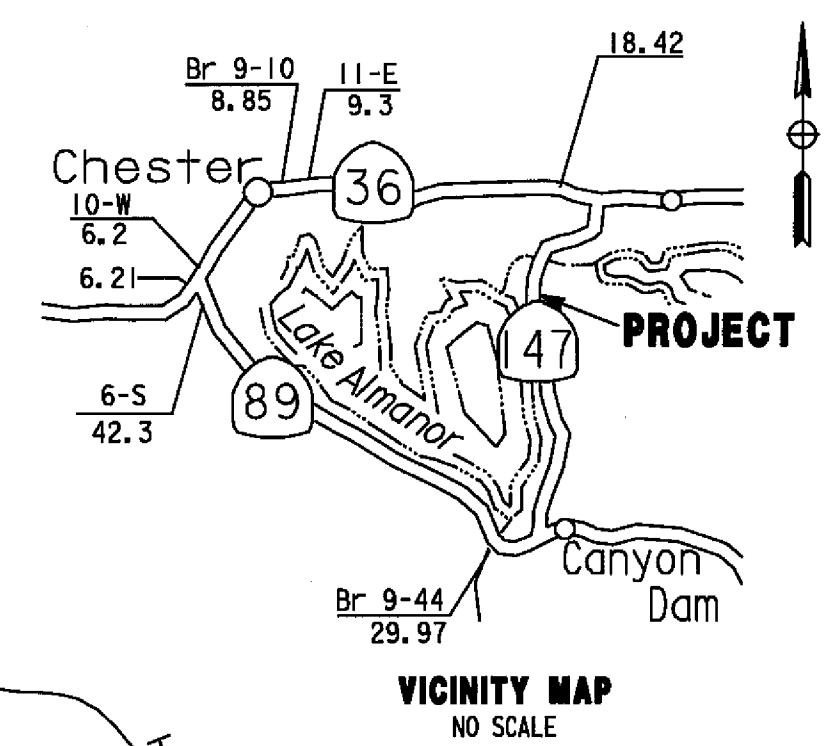
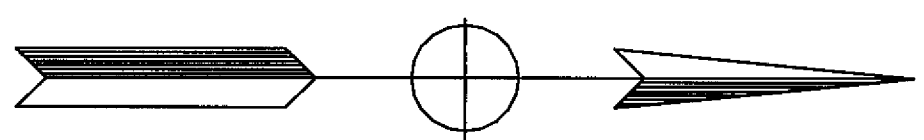


SECTION 21, T. 28 N., R. 8 E., M.D.M.

LEGEND

- SET PK NAIL & SHINER
- SET 3/4" REBAR W/ 1/2" ALUM. CAP STAMPED "CALTRANS" UNLESS OTHERWISE NOTED
- MONUMENT FOUND AS NOTED
- NO MONUMENT FOUND OR SET
- () PER 5 RS 20 CONVERTED TO METERS
- 21-11 SECTION - POINT NO.

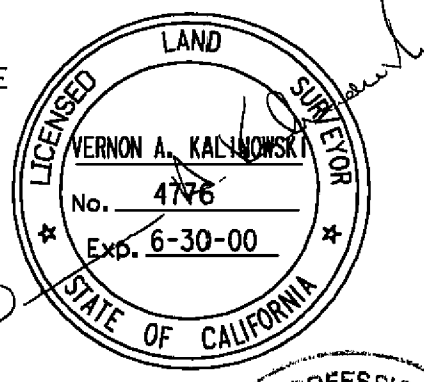
FOUND POINTS				RECORDED			
SEC	PT	LOCAL COORDINATES		DESCRIPTION	BK	OF	PG
21	11	3048.146	3068.028	1/2" IP W/TAG LS 3202	5	RS	20
21	12	3008.062	3061.899	1/2" IP W/TAG LS 2587	5	RS	20
21	13	3088.167	3047.387	1/2" IP W/TAG LS 3202	5	RS	20
21	14	3051.557	3037.338	1/2" IP W/TAG LS 3202	5	RS	20
21	16	3051.313	3036.512	2" THREADED B.C. ON 1/2" GALV. IP	5	RS	20
21	17	2815.013	3016.520	1/2" IP W/TAG RCE 25006			
21	18	2851.422	3019.306	3/4" IP W/TAG RCE 25006			
21	19	3148.365	3009.991	1/2" IP W/TAG RCE 7567	5	RS	20
21	20	3134.432	3067.215	1/2" IP W/TAG RCE 7567	5	RS	20
21	21	3120.291	3094.186	1/2" IP W/TAG RCE 7567	5	RS	20
21	22	3117.351	3058.787	1/2" IP W/TAG RCE 7567	5	RS	20



SURVEYOR'S STATEMENT

THIS MAP CORRECTLY REPRESENTS A SURVEY MADE BY ME OR UNDER MY DIRECTION IN CONFORMANCE WITH THE REQUIREMENTS OF THE LAND SURVEYORS ACT AT THE REQUEST OF DEPT. OF TRANSPORTATION IN SEPTEMBER, 1999.

(SIGNED AND SEALED) *Vernon A. Kalinowski*
 L.S. NO. 4776 VERNON A. KALINOWSKI
 LICENSE EXPIRATION DATE: JUNE 30, 2000



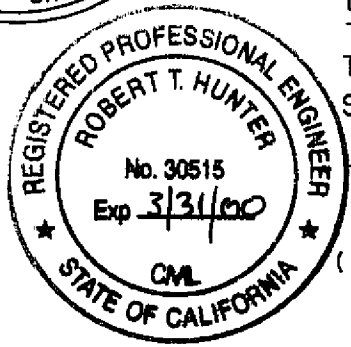
SUPPLEMENTARY INFORMATION MAY BE OBTAINED FROM THE DISTRICT OFFICE, SURVEY DEPARTMENT OR RIGHT OF WAY ENGINEERING DEPARTMENT, 1657 RIVERSIDE DRIVE, REDDING, CA.

THE DISTANCES SHOWN ON THIS MAP ARE EXPRESSED IN METERS UNLESS OTHERWISE SHOWN. TO OBTAIN DISTANCES EXPRESSED IN U.S. SURVEY FEET MULTIPLY DISTANCE BY 3937/1200.

COUNTY SURVEYOR'S STATEMENT

THIS MAP HAS BEEN EXAMINED IN ACCORDANCE WITH SECTION 8766 OF THE LAND SURVEYORS ACT THIS 29TH DAY OF February, 2000.

(SIGNED AND SEALED) *R. Tom Hunter*
 R. TOM HUNTER, R.C.E. 30515
 COUNTY SURVEYOR
 LICENSE EXPIRES 3/31/00

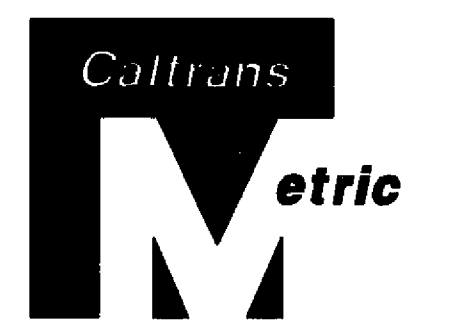
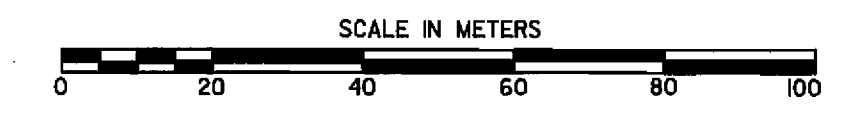


RECORDER'S STATEMENT

FILED THIS 29TH DAY OF February, 2000, AT 10:30 A.M. IN BOOK 11 OF RECORDS OF SURVEY AT PAGE 108, AT THE REQUEST OF COUNTY SURVEYOR.

(SIGNED) *Judith Wells*
 COUNTY RECORDER
 BY (SIGNED) *Patricia Samuel*
 DEPUTY COUNTY RECORDER

NO FEE: STATE BUSINESS FILE# 1222



STATE OF CALIFORNIA
 BUSINESS, TRANSPORTATION, AND HOUSING AGENCY
 DEPARTMENT OF TRANSPORTATION
 DISTRICT 02
**RECORD OF SURVEY
 OF MONUMENTATION**
 IN THE UNINCORPORATED TERRITORY OF THE
 COUNTY OF PLUMAS, STATE OF CALIFORNIA
 ALONG STATE HIGHWAY ROUTE 147 AT P.M. 7.37
 IN SECTION 21, T. 28 N., R. 8 E., M.D.M.
 DATE FEBRUARY 17, 2000 SHEET 1 OF 1