

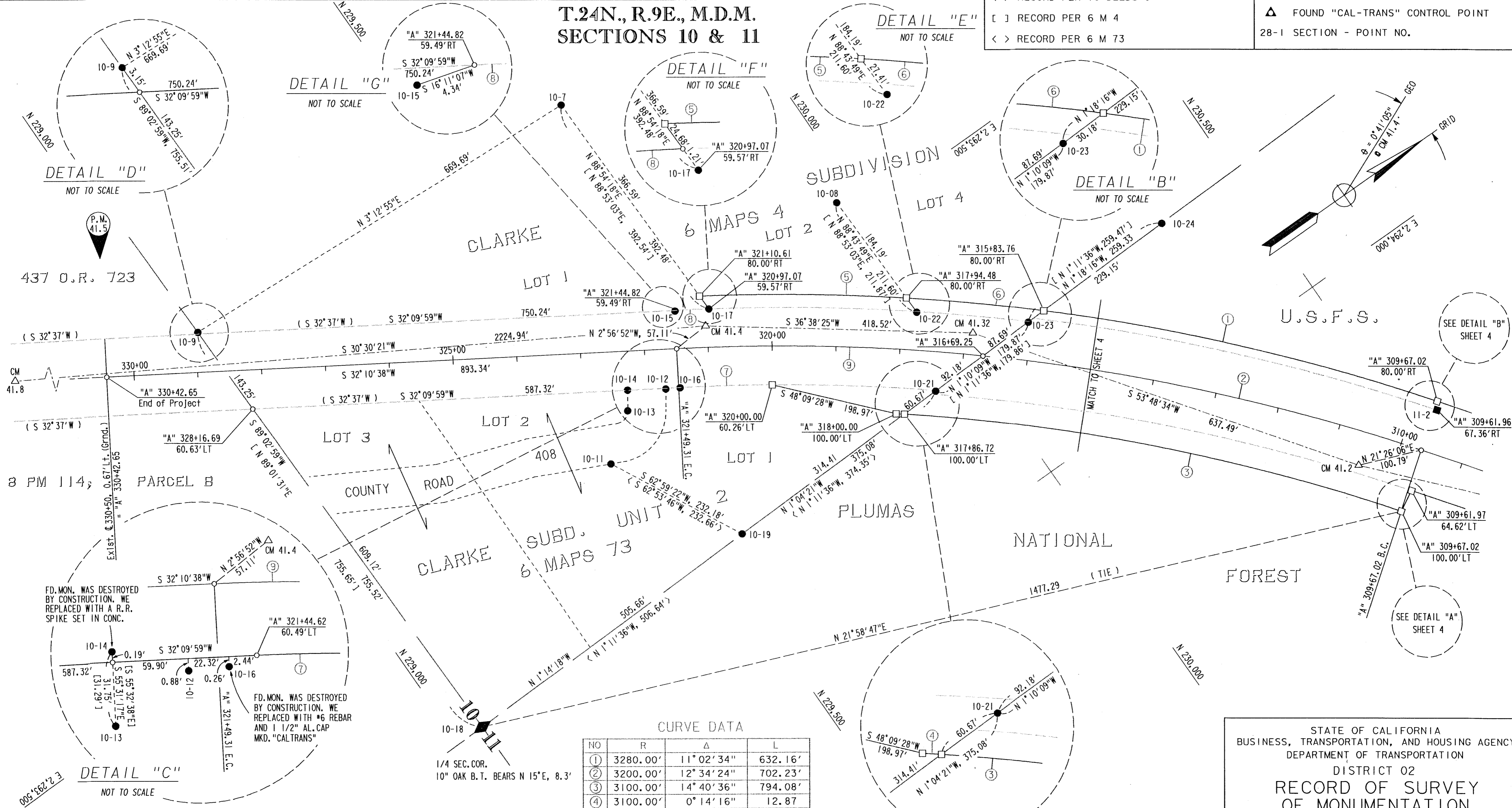
FOUND POINTS

LEGEND

COORDINATES				DESCRIPTION	RECORDED			COORDINATES				DESCRIPTION	RECORDED		
SEC	PT	NORTH	EAST		BK	OF	PG	SEC	PT	NORTH	EAST		BK	OF	PG
10	7	229,700.297	2,293,093.408	1/2" REBAR W/PLASTIC CAP MKD. "C. BROWN RCE 22836"	6	M	4	10	16	229,600.720	2,293,558.893	1/2" REBAR W/PLASTIC CAP MKD. "HENDERSON LS 3297"	6	M	4
	8	229,966.253	2,293,464.797	1/2" REBAR W/PLASTIC CAP MKD. "C. BROWN RCE 22836"	6	M	4		17	229,707.797	2,293,485.815	1/2" REBAR W/PLASTIC CAP MKD. "C. BROWN RCE 22836"	6	M	4
	9	229,031.664	2,293,055.846	1/2" REBAR W/PLASTIC CAP MKD. "C. BROWN RCE 22836"	6	M	4		18	229,044.193	2,293,811.256	1 1/4" I. PIPE W/TAG MKD. "RCE 15265" IN ROCK MOUND.	6	M	73
	10	229,490.273	2,293,543.320	1/2" REBAR, NO CAP	6	M	73		19	229,549.732	2,293,800.327	1/2" REBAR W/PLASTIC CAP MKD. "C. BROWN RCE 22836"	6	M	73
	11	229,444.287	2,293,593.474	1/2" REBAR W/PLASTIC CAP MKD. "C. BROWN RCE 22836"	6	M	73		21	229,924.747	2,293,793.307	1/2" REBAR W/PLASTIC CAP MKD. "C. BROWN RCE 22836"	6	M	73
	12	229,581.498	2,293,547.539	1/2" REBAR W/PLASTIC CAP MKD. "HENDERSON LS 3297"	6	M	73		22	229,970.942	2,293,676.344	1/2" REBAR W/PLASTIC CAP MKD. "C. BROWN RCE 22836"	6	M	4
	13	229,513.397	2,293,540.909	1/2" REBAR W/PLASTIC CAP MKD. "HENDERSON LS 3297"	6	M	73		23	230,104.582	2,293,789.637	1/2" REBAR W/PLASTIC CAP MKD. "C. BROWN RCE 22836"	6	M	4
	14	229,531.368	2,293,514.740	1/2" REBAR W/PLASTIC CAP MKD. "HENDERSON LS 3297"	6	M	73		24	230,363.842	2,293,783.734	1/2" REBAR W/PLASTIC CAP MKD. "HENDERSON LS 3297"	6	M	4
	15	229,662.629	2,293,457.194	1/2" REBAR W/PLASTIC CAP MKD. "HENDERSON LS 3297"	6	M	4	11	2	230,550.280	2,294,267.497	6"x6" CONC. R/W MONUMENT			

- FOUND R/W MONUMENT
- SET 3/4" REBAR W/1 1/2" ALUM. CAP STAMPED "CALTRANS RW"
- MONUMENT FOUND AS NOTED
- NO MONUMENT FOUND OR SET
- ( ) RECORD PER 78 DEEDS 9
- [ ] RECORD PER 6 M 4
- < > RECORD PER 6 M 73
- ◆ SECTION OR FRACTIONAL CORNER FOUND AS NOTED
- ◇ SECTION OR FRACTIONAL CORNER NOT LOCATED
- △ CALTRANS CONTROL LINE MONUMENT SET 3/4" REBAR w/ALUM. CAP STAMPED "CALTRANS" "CM" AS NOTED
- ▲ FOUND "CAL-TRANS" CONTROL POINT 28-1 SECTION - POINT NO.

T.24N., R.9E., M.D.M. SECTIONS 10 & 11



CURVE DATA

NO	R	Δ	L
①	3280.00'	11° 02' 34"	632.16'
②	3200.00'	12° 34' 24"	702.23'
③	3100.00'	14° 40' 36"	794.08'
④	3100.00'	0° 14' 16"	12.87'
⑤	3280.00'	5° 39' 37"	324.03'
⑥	3280.00'	3° 46' 23"	215.99'
⑦	3139.53'	2° 35' 22"	141.90'
⑧	3259.51'	0° 51' 18"	48.63'
⑨	3200.00'	8° 35' 43"	480.05'

EXCEPTING THOSE SHOWN OTHERWISE, ALL DISTANCES AND BEARINGS ARE GRID, BASED ON THE CALIFORNIA COORDINATE SYSTEM OF 1927, ZONE 1. TO OBTAIN GROUND LEVEL DISTANCES, MULTIPLY GRID DISTANCES BY 1.0001499. GRID WAS ESTABLISHED FROM U.S.C. & G.S. STA. "QUINCY" AND D.M.A. STA. "QUINCY STA 7051 ECC"

SUPPLEMENTARY INFORMATION MAY BE OBTAINED FROM THE DISTRICT OFFICE, SURVEY DEPARTMENT OR RIGHT OF WAY ENGINEERING DEPARTMENT, 1657 RIVERSIDE DRIVE, REDDING, CA.

STATE OF CALIFORNIA  
 BUSINESS, TRANSPORTATION, AND HOUSING AGENCY  
 DEPARTMENT OF TRANSPORTATION  
 DISTRICT 02  
**RECORD OF SURVEY  
 OF MONUMENTATION**  
 IN THE UNINCORPORATED TERRITORY OF THE  
 COUNTY OF PLUMAS, STATE OF CALIFORNIA  
 ALONG STATE HIGHWAY ROUTE 70, P.M. 40.0 TO 41.5  
 IN SECTIONS 2, 10, & 11, T.24 N, R.9 E., M.D.M.  
 DATE NOV. 15, 1999 SHEET 5 OF 5

