

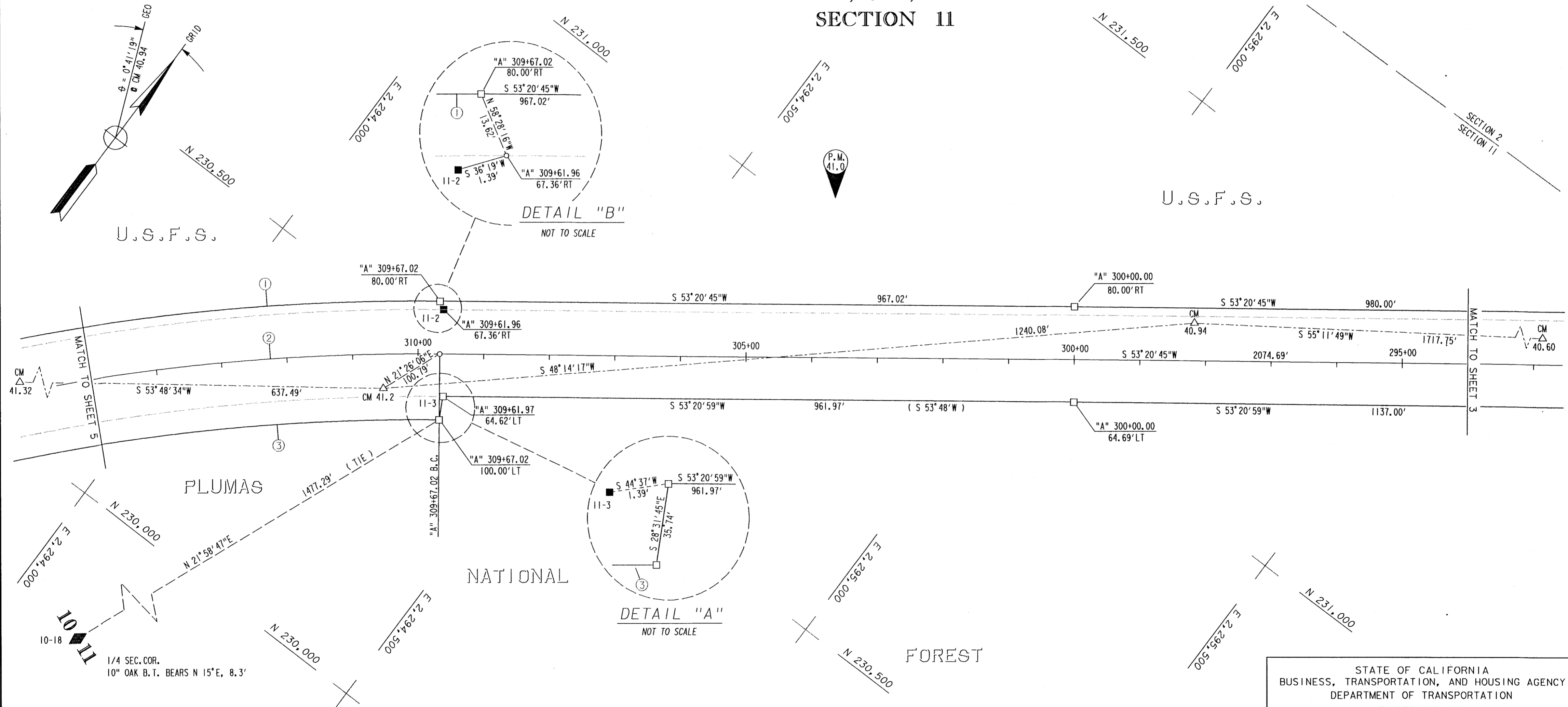
FOUND POINTS

COORDINATES				DESCRIPTION	RECORDED			COORDINATES				DESCRIPTION	RECORDED		
SEC	PT	NORTH	EAST		BK	OF	PG	SEC	PT	NORTH	EAST		BK	OF	PG
10	18	229,044.193	2,293,811.256	1 1/4" I.P.I.PE W/TAG MKD. "RCE 15265" IN ROCK MOUND.	6	M	73								
11	2	230,550.280	2,294,267.497	6"x 6" CONC. R/W MONUMENT											
	3	230,444.527	2,294,346.130	6"x 6" CONC. R/W MONUMENT											

LEGEND

- FOUND R/W MONUMENT
 - SET 3/4" REBAR W/1 1/2" ALUM. CAP STAMPED "CALTRANS RW"
 - MONUMENT FOUND AS NOTED
 - NO MONUMENT FOUND OR SET
 - () RECORD PER 300 O.R. 369
 - ◆ SECTION OR FRACTIONAL CORNER FOUND AS NOTED
 - ◇ SECTION OR FRACTIONAL CORNER NOT LOCATED
 - △ CALTRANS CONTROL LINE MONUMENT SET 3/4" REBAR W/ALUM. CAP STAMPED "CALTRANS" "CM" AS NOTED
 - ▲ FOUND "CAL-TRANS" CONTROL POINT
- 28-1 SECTION - POINT NO.

T.24N., R.9E., M.D.M.
SECTION 11

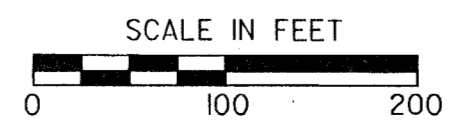


EXCEPTING THOSE SHOWN OTHERWISE, ALL DISTANCES AND BEARINGS ARE GRID, BASED ON THE CALIFORNIA COORDINATE SYSTEM OF 1927, ZONE 1. TO OBTAIN GROUND LEVEL DISTANCES, MULTIPLY GRID DISTANCES BY 1.0001499. GRID WAS ESTABLISHED FROM U.S.C. & G.S. STA. "QUINCY" AND D.M.A. STA. "QUINCY STA 7051 ECC"

SUPPLEMENTARY INFORMATION MAY BE OBTAINED FROM THE DISTRICT OFFICE, SURVEY DEPARTMENT OR RIGHT OF WAY ENGINEERING DEPARTMENT, 1657 RIVERSIDE DRIVE, REDDING, CA.

CURVE DATA

NO	R	Δ	L
①	3280.00'	11°02'34"	632.16'
②	3200.00'	12°34'24"	702.23'
③	3100.00'	14°40'36"	794.08'



STATE OF CALIFORNIA
BUSINESS, TRANSPORTATION, AND HOUSING AGENCY
DEPARTMENT OF TRANSPORTATION
DISTRICT 02
**RECORD OF SURVEY
OF MONUMENTATION**
IN THE UNINCORPORATED TERRITORY OF THE
COUNTY OF PLUMAS, STATE OF CALIFORNIA
ALONG STATE HIGHWAY ROUTE 70, P.M. 40.0 TO 41.5
IN SECTIONS 2, 10, & 11, T.24 N, R.9 E., M.D.M.
DATE NOV. 15, 1999 SHEET 4 OF 5