

SECTION 17

T.25 N., R.8 E., M.D.M.

PCL 2

3 PM 43

321 OR 404

500 OR 70

5 PM 135

PCL 3

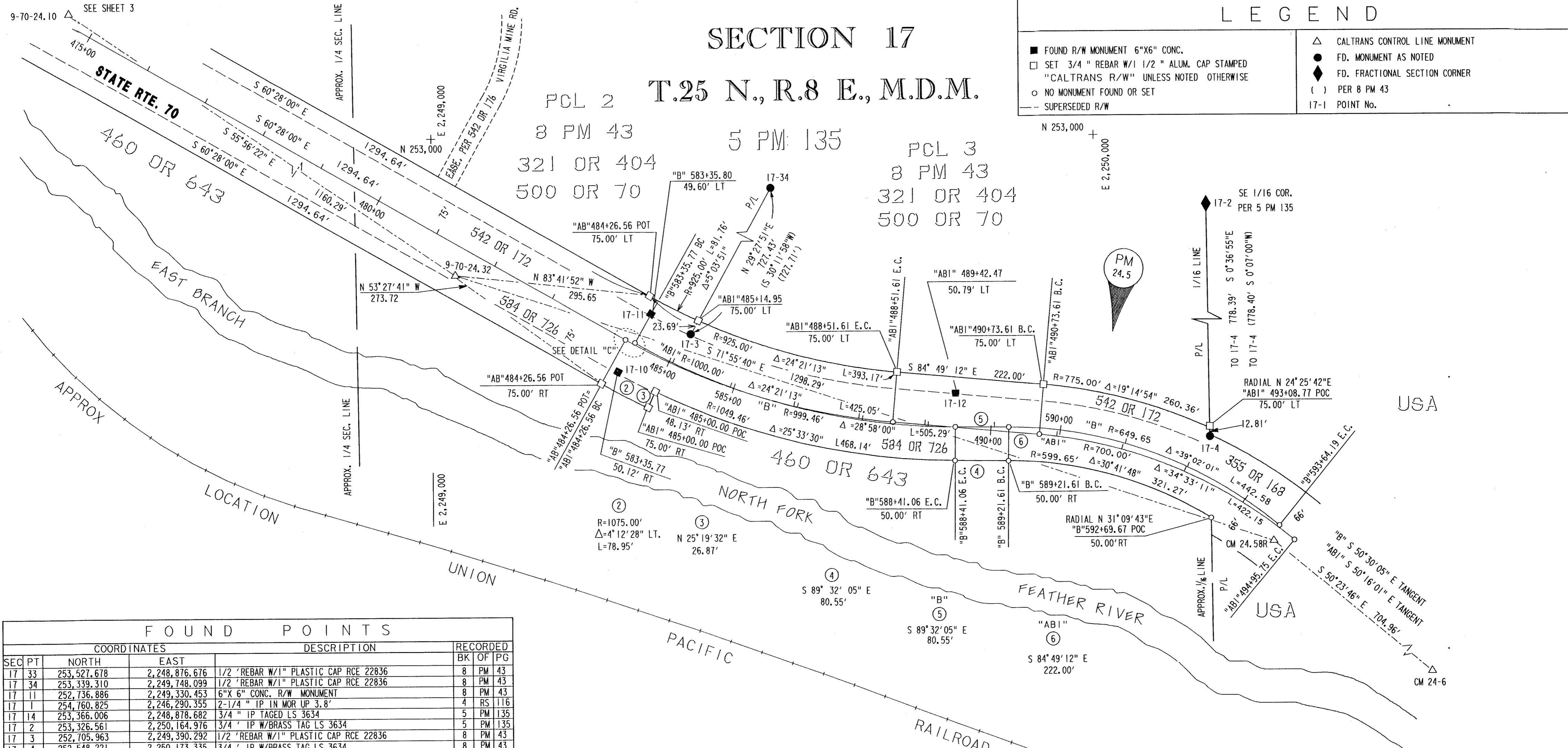
3 PM 43

321 OR 404

500 OR 70

LEGEND

- FOUND R/W MONUMENT 6"X6" CONC.
- SET 3/4" REBAR W/1 1/2" ALUM. CAP STAMPED "CALTRANS R/W" UNLESS NOTED OTHERWISE
- NO MONUMENT FOUND OR SET
- SUPERSEDED R/W
- △ CALTRANS CONTROL LINE MONUMENT
- FD. MONUMENT AS NOTED
- ◆ FD. FRACTIONAL SECTION CORNER
- () PER 8 PM 43
- 17-1 POINT No.

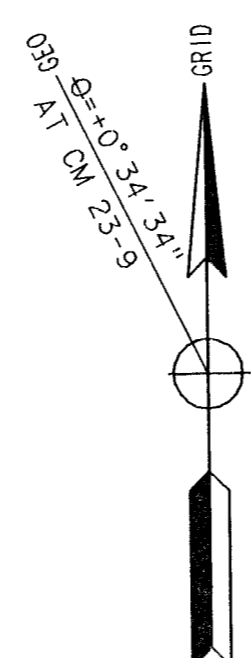


FOUND POINTS					
SECT	PT	COORDINATES		DESCRIPTION	RECORDED BK OF PG
		NORTH	EAST		
17	33	253,527.678	2,248,876.676	1/2" REBAR W/1" PLASTIC CAP RCE 22836	8 PM 43
17	34	253,339.310	2,249,748.099	1/2" REBAR W/1" PLASTIC CAP RCE 22836	8 PM 43
17	11	252,736.886	2,249,330.453	6"X6" CONC. R/W MONUMENT	8 PM 43
17	1	254,760.825	2,246,290.355	2-1/4" IP IN MOR UP 3.8"	4 RS 116
17	14	253,366.006	2,248,878.682	3/4" IP TAGED LS 3634	5 PM 135
17	2	253,326.561	2,250,164.976	3/4" IP W/BRASS TAG LS 3634	5 PM 135
17	3	252,705.963	2,249,390.292	1/2" REBAR W/1" PLASTIC CAP RCE 22836	8 PM 43
17	4	252,548.221	2,250,173.335	3/4" IP W/BRASS TAG LS 3634	8 PM 43
17	7	253,470.568	2,247,594.156	1/2" REBAR NO TAG	8 PM 43
17	8	253,472.257	2,247,592.328	1/2" REBAR NO TAG	8 PM 43
17	9	253,381.544	2,248,183.641	1/2" REBAR W/ PLASTIC CAP RCE 22836	8 PM 43
17	18	253,120.989	2,248,647.046	1/2" REBAR W/ PLASTIC CAP RCE 22836	8 PM 43
17	20	253,728.891	2,247,588.938	1" IP W/ TAG LS 3634	8 PM 43
18	7	254,667.480	2,246,201.546	1-3/4" IP W/LEAD CAP STAMPED 'DHC1 8 6281' IN MOR	6 PM 112
18	9	254,247.970	2,245,769.500	2-1/4" CAP ON 1 3/4" O.D.I.P. STAMPED 'DHC I 6231'	6 PM 112
18	11	254,234.054	2,245,782.203	3/4" IP TAGED LS 3634	6 PM 112
18	14	254,090.111	2,245,635.526	6"X6" CONC. R/W MONUMENT	6 PM 112

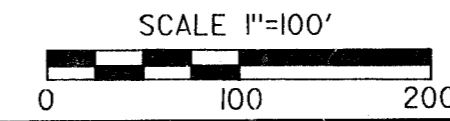
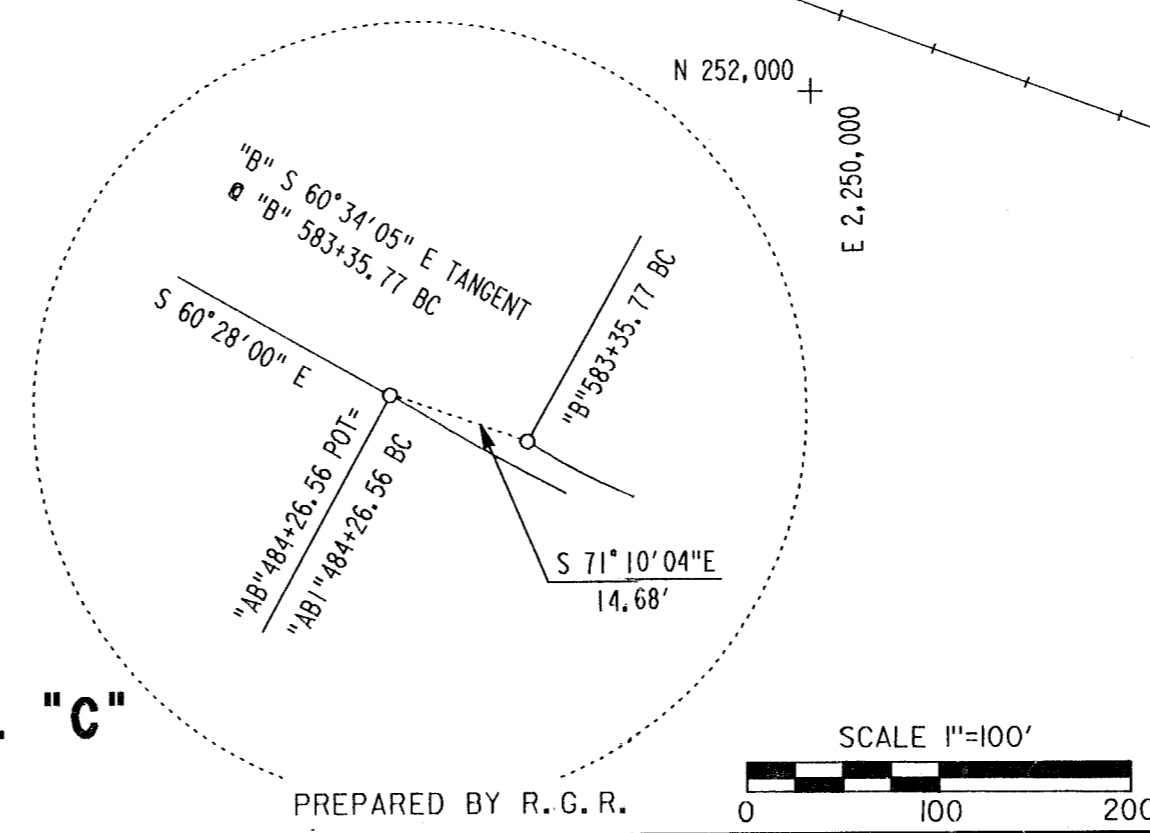
CONTROL MONUMENTS				
CM	NORTH	EAST	DESCRIPTION	RECORDED BK OF PG
MINE AZIMUTH	253,872.205	2,245,821.622	BRASS CAP IN CONC.	
CM-23-7	253,360.023	2,245,871.630	3/4" REBAR W/ 1/2" ALUM. CAP	
CM 23.79	252,918.420	2,246,290.162	3/4" REBAR W/ 1/2" ALUM. CAP	
CM 23-9	252,882.354	2,246,752.145	3/4" REBAR W/ 1/2" ALUM. CAP	
9-70-24.10	253,445.994	2,248,074.022	2 1/4" CDOT BRASS CAP	
9-70-24.32	252,796.150	2,249,035.260	2 1/4" CDOT BRASS CAP	
CM 24.58R	252,393.400	2,250,269.502	3/4" REBAR W/ 1/2" ALUM. CAP	
CM 24-6	251,944.006	2,250,812.649	3/4" REBAR W/ 1/2" ALUM. CAP	

EXCEPTING THOSE SHOWN OTHERWISE, ALL DISTANCES AND BEARINGS ARE GRID, BASED ON THE CALIFORNIA COORDINATE SYSTEM OF 1927, ZONE 1. TO OBTAIN GROUND LEVEL DISTANCES, MULTIPLY GRID DISTANCES BY 1.0001285. GRID WAS ESTABLISHED FROM CALTRANS CONTROL LINE MONUMENTS

SUPPLEMENTARY INFORMATION MAY BE OBTAINED FROM THE DISTRICT OFFICE, SURVEY DEPARTMENT OR RIGHT OF WAY ENGINEERING DEPARTMENT, 1657 RIVERSIDE DRIVE, REDDING, CA.



DETAIL "C"



STATE OF CALIFORNIA
 BUSINESS, TRANSPORTATION, AND HOUSING AGENCY
 DEPARTMENT OF TRANSPORTATION
 DISTRICT 02
**RECORD OF SURVEY
 OF MONUMENTATION**
 IN THE UNINCORPORATED TERRITORY OF THE
 COUNTY OF PLUMAS, STATE OF CALIFORNIA
 ALONG STATE HIGHWAY ROUTE 70 P.M. 23.9 TO 24.6
 IN THE S. 1/2 SECS. 17 & 18
 T.25 N., R.8 E., M.D.M.
 DATE NOVEMBER 15, 1999 SHEET 4 OF 4