

FOUND POINTS						
SEC	PT	COORDINATES		DESCRIPTION	RECORDED	
		NORTH	EAST		BK	OF PG
17	1	254,760.825	2,246,290.355	2-1/4" IP IN MOR UP 3.8'	4	RS 116
17	2	253,326.561	2,250,164.976	3/4" IP W/ BRASS TAG LS 3634	5	PM 135
17	14	253,366.006	2,248,878.682	3/4" IP TAGED LS 3634	5	PM 135

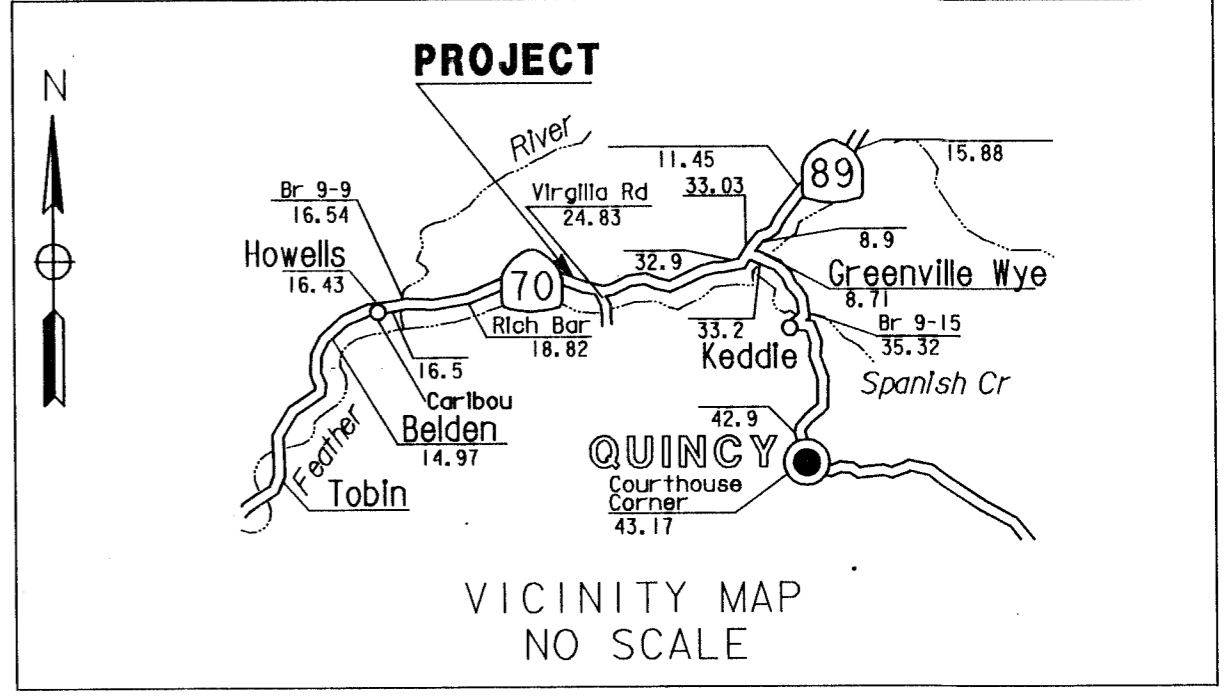
  

CONTROL MONUMENTS				
CM	COORDINATES		DESCRIPTION	RECORDED
	NORTH	EAST		
CM 23.52	254,105.549	2,245,680.442	3/4" REBAR W/ 1 1/2" ALUM. CAP	
MINE AZIMUTH	253,872.205	2,245,821.622	BRASS CAP IN CONC.	
CM-23-7	253,360.023	2,245,871.630	3/4" REBAR W/ 1 1/2" ALUM. CAP	
CM 23.79	252,918.420	2,246,290.162	3/4" REBAR W/ 1 1/2" ALUM. CAP	
CM 23-9	252,882.354	2,246,752.145	3/4" REBAR W/ 1 1/2" ALUM. CAP	
9-70-24.10	253,445.994	2,248,074.022	2 1/4" CDOT BRASS CAP	
9-70-24.32	252,796.150	2,249,035.260	2 1/4" CDOT BRASS CAP	
CM 24.58R	252,333.400	2,250,269.502	3/4" REBAR W/ 1 1/2" ALUM. CAP	
CM 24-6	251,944.006	2,250,812.649	3/4" REBAR W/ 1 1/2" ALUM. CAP	

**LEGEND**

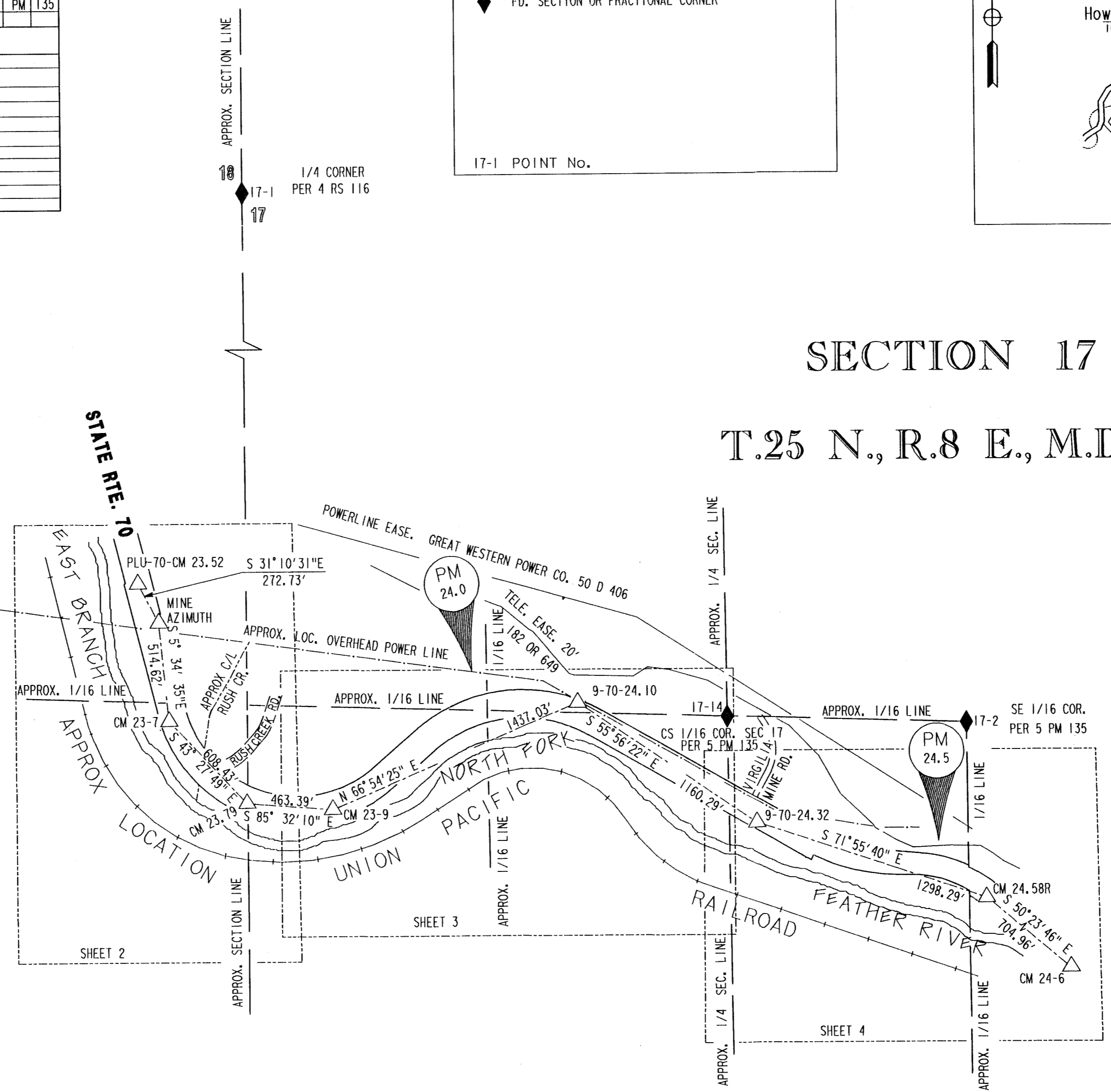
△ CALTRANS CONTROL LINE MONUMENT  
 ◆ FD. SECTION OR FRACTIONAL CORNER

17-1 POINT No.



**SECTION 18**  
**T.25 N., R.8 E., M.D.M.**

**SECTION 17**  
**T.25 N., R.8 E., M.D.M.**



**COUNTY SURVEYOR'S STATEMENT**

THIS MAP HAS BEEN EXAMINED IN ACCORDANCE WITH SECTION 8766 OF THE LAND SURVEYORS ACT THIS 17<sup>TH</sup> DAY OF November 1999

(SIGNED AND SEALED) R. Tom Hunter  
 R. TOM HUNTER RCE 30515  
 Plumas County Surveyor

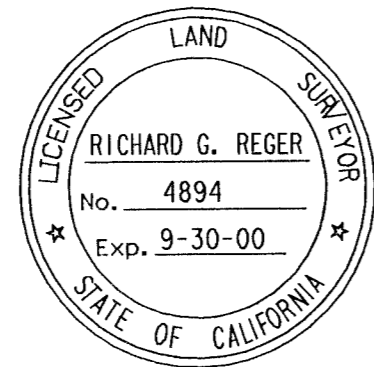
LICENSE EXPIRATION DATE 3/31/00



**SURVEYOR'S STATEMENT**

THIS MAP CORRECTLY REPRESENTS A SURVEY MADE BY ME OR UNDER MY DIRECTION IN CONFORMANCE WITH THE REQUIREMENTS OF THE LAND SURVEYORS ACT AT THE REQUEST OF DEPARTMENT OF TRANSPORTATION IN MAY 1992, MAY 1999 AND SEPTEMBER 1999

(SIGNED AND SEALED) Richard G. Reger  
 L.S. No. 4894  
 LICENSE EXPIRATION DATE SEPT. 30, 2000



EXCEPTING THOSE SHOWN OTHERWISE, ALL DISTANCES AND BEARINGS ARE GRID, BASED ON THE CALIFORNIA COORDINATE SYSTEM OF 1927, ZONE 1. TO OBTAIN GROUND LEVEL DISTANCES, MULTIPLY GRID DISTANCES BY 1.0001285. GRID WAS ESTABLISHED FROM CALTRANS CONTROL LINE MONUMENTS

SUPPLEMENTARY INFORMATION MAY BE OBTAINED FROM THE DISTRICT OFFICE, SURVEY DEPARTMENT OR RIGHT OF WAY ENGINEERING DEPARTMENT, 1657 RIVERSIDE DRIVE, REDDING, CA.

**RECORDER'S STATEMENT**

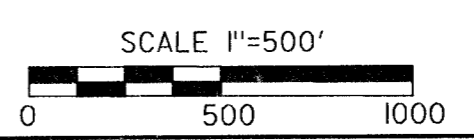
FILED THIS 17<sup>TH</sup> DAY OF November, 1999 AT 1:55 P.M.  
 IN BOOK 11 OF Records of Surveys PAGE 86-89,  
 AT THE REQUEST OF WILLIAM E. LYMAN

(SIGNED) JUDITH WELLS  
 COUNTY RECORDER

BY (SIGNED) Patty Samuel  
 DEPUTY COUNTY RECORDER

NO FEE: STATE BUSINESS Doc. # 9169

STATE OF CALIFORNIA  
 BUSINESS, TRANSPORTATION, AND HOUSING AGENCY  
 DEPARTMENT OF TRANSPORTATION  
 DISTRICT 02  
**RECORD OF SURVEY  
 OF MONUMENTATION**  
 IN THE UNINCORPORATED TERRITORY OF THE  
 COUNTY OF PLUMAS, STATE OF CALIFORNIA  
 ALONG STATE HIGHWAY ROUTE 70 P.M. 23.9 TO 24.6  
 IN THE S. 1/2 SECS. 17 & 18  
 T. 25 N., R. 8 E., M.D.M.  
 DATE NOVEMBER 15, 1999 SHEET 1 OF 4



PREPARED BY R.G.R.