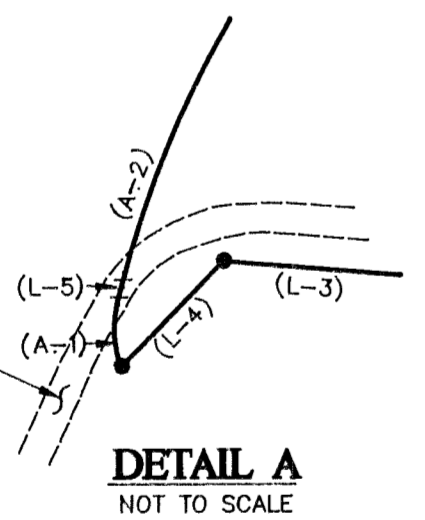
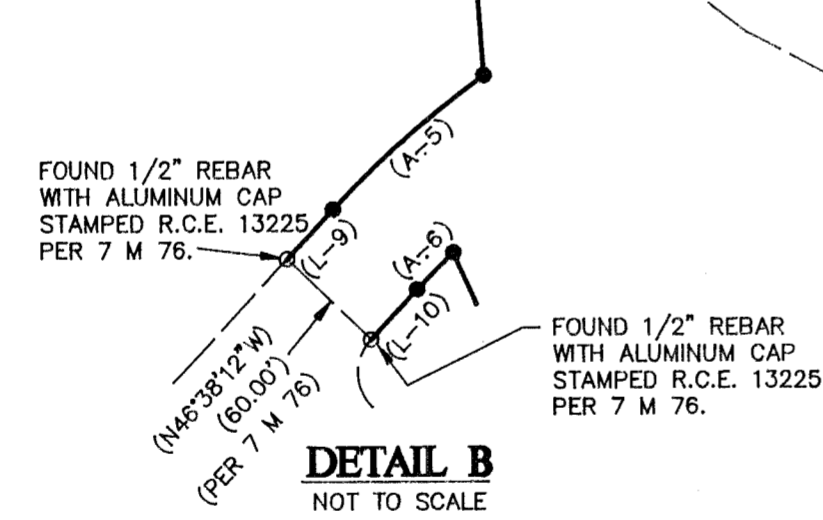


SEE DETAIL A

SEE DETAIL B



DETAIL A
NOT TO SCALE



DETAIL B
NOT TO SCALE

LEGEND

- FOUND MONUMENT AS NOTED.
- SET 1/2" REBAR WITH ALUMINUM CAP STAMPED L.S. 7045.
- + COMPUTED POINT, NOTHING SET
- 717 O.R. 323 OFFICIAL RECORD, VOLUME AND PAGE.
- 7 M 76 MAPS, BOOK AND PAGE.
- () INDICATES MEASURED DATA AND RECORD DATA PER 717 O.R. 323, UNLESS OTHERWISE INDICATED.

TANGENT TABLE

LINE	DIRECTION	DISTANCE
(L-1)	(N84°46'21"W	157.20'
(L-2)	(S51°49'07"W	54.80'
(L-3)	(N85°28'44"W	103.29'
(L-4)	(S44°56'17"W	38.15'
(L-5)	(N15°12'59"E	4.68'
(L-6)	(S44°38'22"E	51.26'
(L-7)	(S31°52'44"E	96.05'
(L-8)	(S03°54'32"E	41.48'
(L-9)	(S43°21'48"W	35.00'
(L-10)	(N43°21'48"E	35.00'
(L-11)	(S24°38'51"E	73.77'
(L-12)	(S45°50'53"E	70.88'

CURVE TABLE

CURVE	RADIUS	LENGTH	DELTA
(A-1)	(30.00'	17.90'	34°10'48"
(A-2)	(270.00'	140.46'	29°48'21"
(A-3)	(970.00'	90.07'	05°19'14"
(A-4)	(375.00'	236.27'	36°05'59"
(A-5)	(530.00'	104.92'	11°20'32"
(A-6)	(470.00'	27.00'	03°17'29"
(A-7)	(293.48'	42.13'	08°13'27"
(A-8)	(2048.41'	149.57'	04°11'01"

BASIS OF BEARINGS

1. THE BASIS OF BEARINGS FOR THIS MAP SHEET IS THE NORTHERLY LINE OF LOTS 39 AND 40 OF WHITEHAWK RANCH, PHASE II, UNIT NO. 1, SHOWN AS N84°46'21"W IN BOOK 7 OF MAPS AT PAGE 76, PLUMAS COUNTY RECORDS.

RECORD OF SURVEY

FOR
MOHAWK VALLEY RANCH, INC.

WITHIN PORTIONS OF:
SECTION 5, T. 21 N., R. 13 E. M.D.M.;
SECTIONS 31 AND 32, T. 22 N., R. 13 E. M.D.M.;
PLUMAS COUNTY, CALIFORNIA

PREPARED BY:
BASTIAN ENGINEERING

P.O. BOX 280
GRAEAGLE, CALIFORNIA 96103
L.S. 7045

AUGUST, 1999

SHEET 2 OF 2