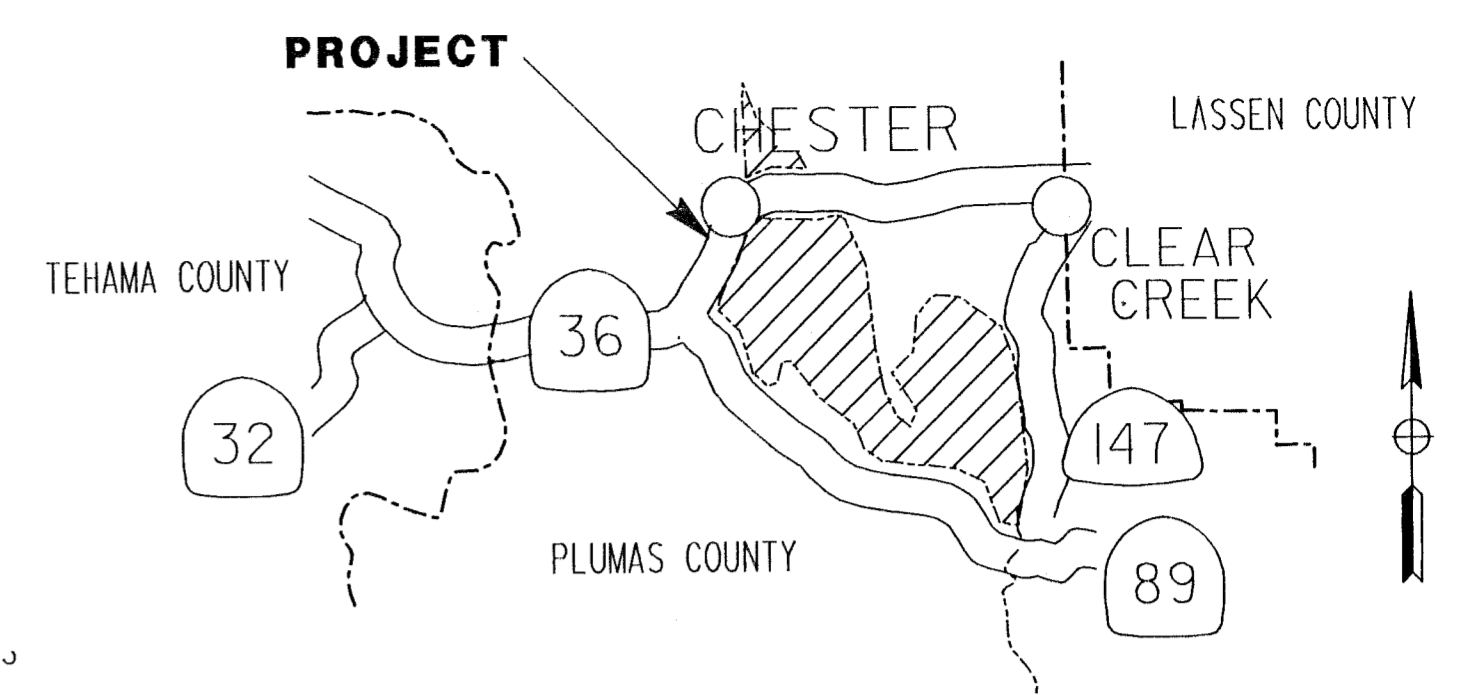


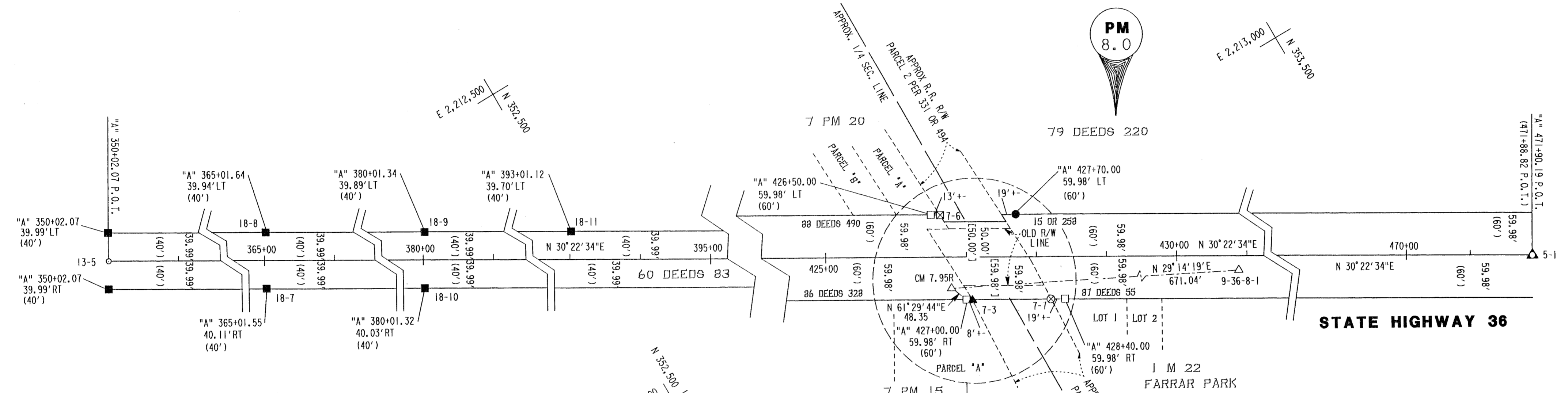
| FOUND POINTS | | | DESCRIPTION | |
|--------------|----|-------------|---------------|---|
| SEC | PT | COORDINATES | | |
| COORDINATES | | | DESCRIPTION | |
| SEC | PT | NORTH | | EAST |
| 5 | 1 | 356,836.337 | 2,215,312.089 | BRASS DISK IN CONC. IN 6" STEEL CYLINDER 0.7' BELOW SURFACE |
| 7 | 3 | 352,938.930 | 2,213,097.965 | 1/2" I. P. LS3202 0.3' BELOW SURFACE |
| 13 | 5 | 346,321.348 | 2,209,148.868 | CALC. POINT MIDWAY BETWEEN TWO 6"X6" CONC. MONUMENTS |
| 18 | 7 | 347,594.698 | 2,209,941.720 | 6"X6" CONC. MONUMENT |
| 18 | 8 | 347,635.254 | 2,209,872.707 | 6"X6" CONC. MONUMENT |
| 18 | 9 | 348,929.059 | 2,210,631.107 | 6"X6" CONC. MONUMENT |
| 18 | 10 | 348,888.626 | 2,210,700.047 | 6"X6" CONC. MONUMENT |
| 18 | 11 | 350,050.312 | 2,211,288.538 | 6"X6" CONC. MONUMENT |
| 7 | 6 | 352,960.448 | 2,212,971.152 | 3/4" GALV. PIPE W/PLASTIC PLUG LS 3202 0.8' BELOW SURFACE |
| 7 | 7 | 353,035.839 | 2,213,154.340 | 3/4" GALV. PIPE NO TAG 0.5' BELOW SURFACE |

| CONTROL MONUMENTS | | | DESCRIPTION |
|-------------------|-------------|---------------|--|
| CM | NORTH | EAST | |
| 7.95R | 352,909.136 | 2,213,050.771 | REBAR W/ ALUM. CAP STAMPED "CALTRANS CM 7.95R" |
| 9-36-8-1 | 353,494.682 | 2,213,378.540 | REBAR W/ ALUM. CAP STAMPED "CALTRANS 9-36-8-1" |

| LEGEND | |
|--------|---|
| □ | SET 3/4" REBAR W/ 1 1/2" ALUM. CAP STAMPED "CALTRANS RW" |
| ● | SET 1 1/2" ALUM. CAP EPOXIED INTO PAVEMENT STAMPED "CALTRANS RW" |
| ⊗ | FD 3/4" GALV. PIPE LS 3202 PER 7 PM 20 |
| ⊙ | FD 3/4" GALV. PIPE NO TAG PER 1 M 22 |
| ▲ | FOUND 1/2" I.P. LS 3202 PER 7 PM 15 |
| ○ | NO MONUMENT FOUND OR SET |
| △ | FOUND Q MONUMENT BRASS DISK IN CONC. IN 6" STEEL CYLINDER |
| ■ | FD 6"X 6" CONC. RW MON. |
| △ | CALTRANS CONTROL LINE MONUMENT 3/4" REBAR W 1 1/2" ALUM. CAP STAMPED "CALTRANS" NAME AS NOTED |
| () | RECORD DATA PER DISTRICT 2 R/W RECORD MAP 9-29-86.14 thru 20 |
| [] | RECORD DATA PER 562 OR 211 AND 562 OR 216 |
| | 7-3 SECTION-POINT No. |



SECTION 7, T.28 N., R.7 E., M.D.M.



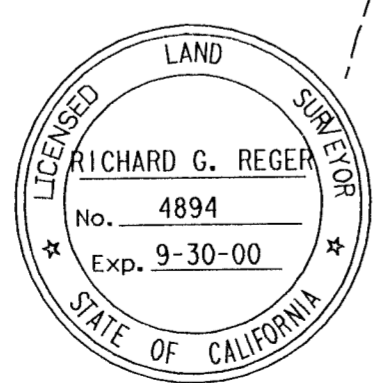
COUNTY SURVEYOR'S STATEMENT

THIS MAP HAS BEEN EXAMINED IN ACCORDANCE WITH SECTION 8766 OF THE LAND SURVEYORS ACT THIS 26 DAY OF August, 1999
 (SIGNED AND SEALED) R Tom Hunter
 R. TOM HUNTER R.C.E. 30515
 PLUMAS COUNTY SURVEYOR
 LICENSE EXPIRATION DATE 3/31/00



SURVEYOR'S STATEMENT

THIS MAP CORRECTLY REPRESENTS A SURVEY MADE BY ME OR UNDER MY DIRECTION IN CONFORMANCE WITH THE REQUIREMENTS OF THE LAND SURVEYORS ACT AT THE REQUEST OF DEPARTMENT OF TRANSPORTATION IN DECEMBER 1990 AND JUNE 1999
 (SIGNED AND SEALED) Richard G. Regev
 L.S. No. 4894
 LICENSE EXPIRATION DATE SEPTEMBER 30, 2000



EXCEPTING THOSE SHOWN OTHERWISE, ALL DISTANCES AND BEARINGS ARE GRID, BASED ON THE CALIFORNIA COORDINATE SYSTEM OF 1927, ZONE 1. TO OBTAIN GROUND LEVEL DISTANCES, MULTIPLY GRID DISTANCES BY 1.0002991. GRID WAS ESTABLISHED FROM CALTRANS CONTROL LINE MONUMENTS CM 7.95R, 9-36-8-1.

SUPPLEMENTARY INFORMATION MAY BE OBTAINED FROM THE DISTRICT OFFICE, SURVEY DEPARTMENT OR RIGHT OF WAY ENGINEERING DEPARTMENT, 1657 RIVERSIDE DRIVE, REDDING, CA.

DETAIL N.T.S.

RECORDER'S STATEMENT

FILED THIS 26 DAY OF August, 1999
 AT 1:16 P.M.
 IN BOOK 11 OF Record of Surveys PAGE 78,
 AT THE REQUEST OF DEPARTMENT OF TRANSPORTATION.
 (SIGNED) JUDITH WELLS
 COUNTY RECORDER
 BY (SIGNED) Steve A. Peary
 DEPUTY COUNTY RECORDER
 NO FEE: STATE BUSINESS

STATE OF CALIFORNIA
 BUSINESS, TRANSPORTATION, AND HOUSING AGENCY
 DEPARTMENT OF TRANSPORTATION
 DISTRICT 02
**RECORD OF SURVEY
 OF MONUMENTATION**
 IN THE UNINCORPORATED TERRITORY OF THE
 COUNTY OF PLUMAS, STATE OF CALIFORNIA
 ALONG STATE HIGHWAY ROUTE 36, P.M. 8.0
 IN THE E. 1/2 OF SEC. 7, T. 28 N., R. 7 E., M.D.M.
 DATE JULY 20, 1999 SHEET 1 OF 1

