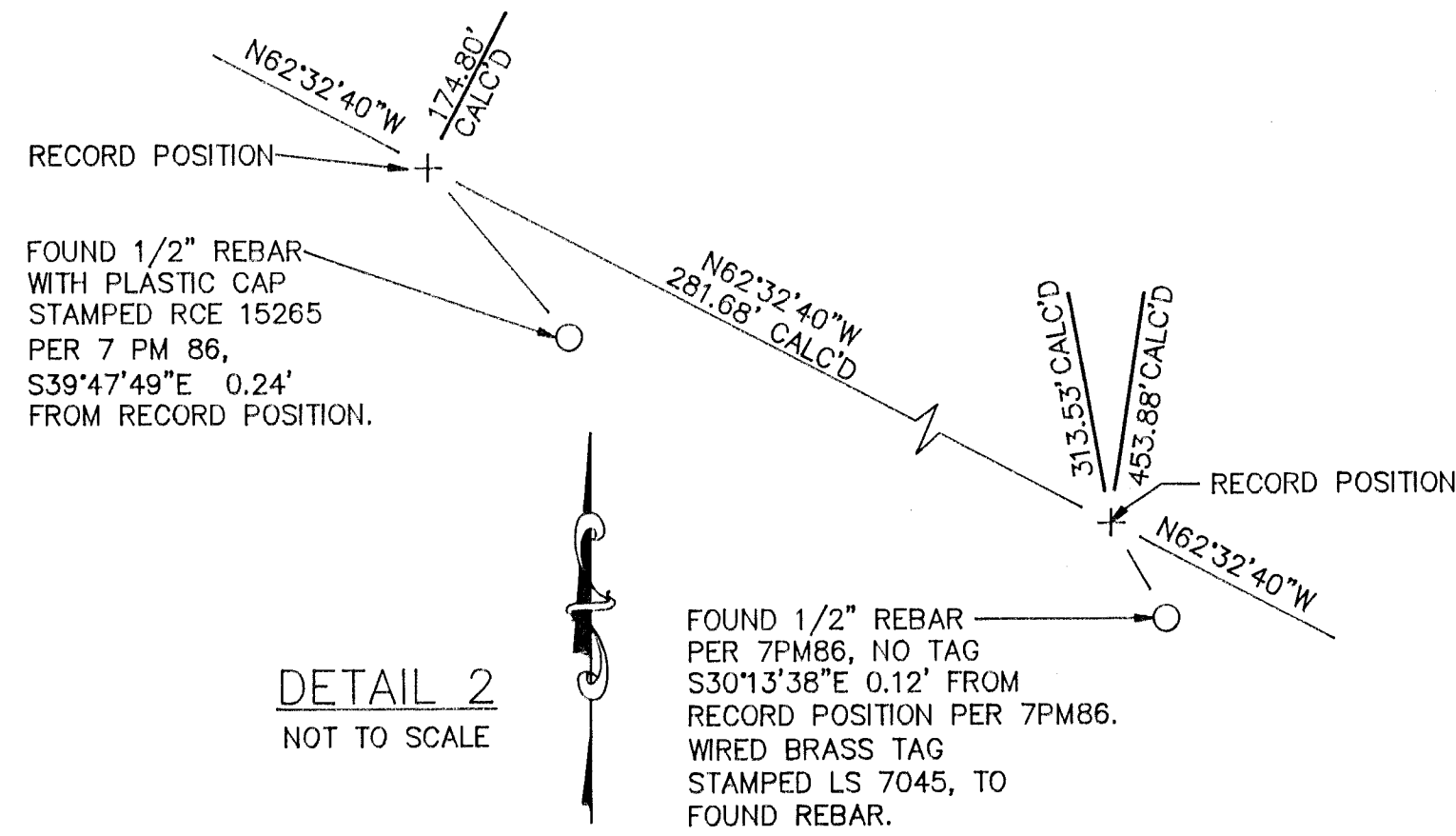
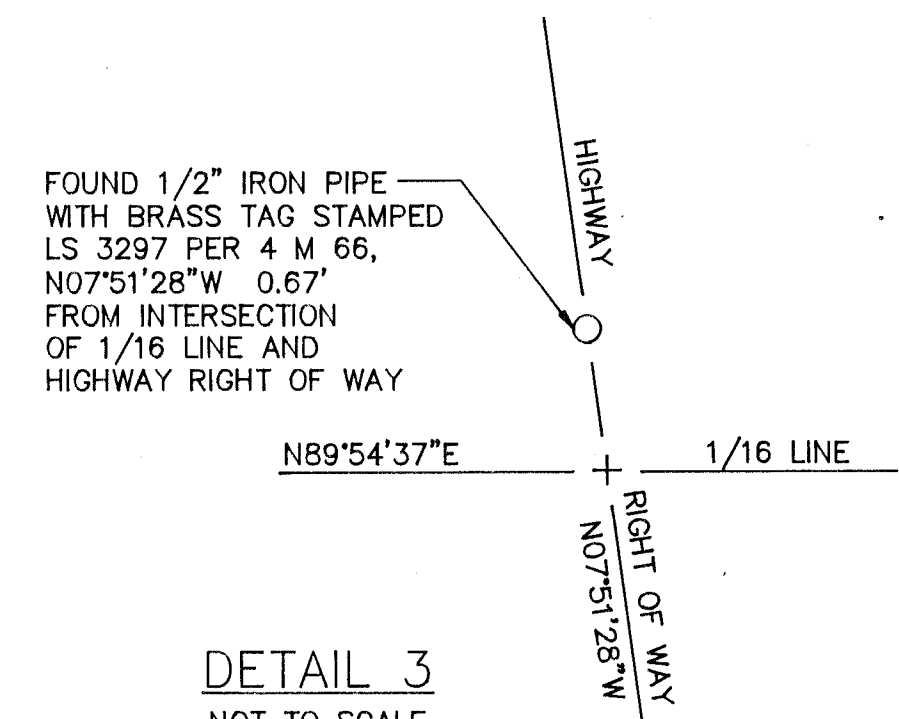


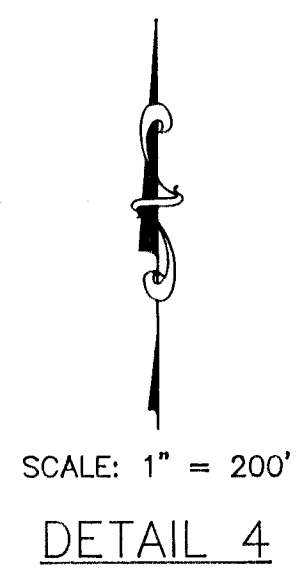
DETAIL 1
NOT TO SCALE



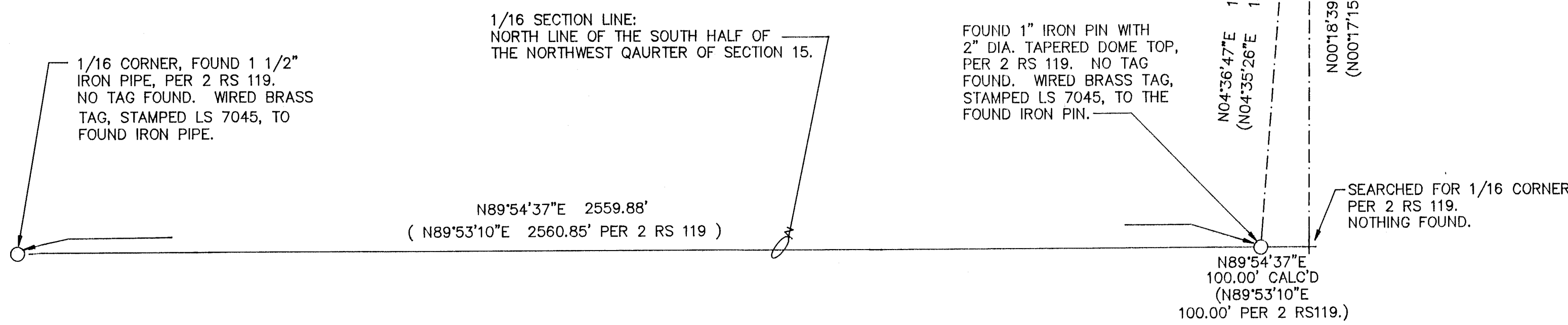
DETAIL 2
NOT TO SCALE



DETAIL 3
NOT TO SCALE



DETAIL 4
SCALE: 1" = 200'



LEGEND

- , △ FOUND MONUMENT AS NOTED.
- SET 1/2" REBAR WITH ALUMINUM CAP STAMPED L.S. 7045.
- ⊕ COMPUTED POINT, NOTHING SET.
- 2 R.S. 119 RECORD OF SURVEY, BOOK AND PAGE.
- 763 O.R. 282 OFFICIAL RECORD, VOLUME AND PAGE.
- 7 PM 86 PARCEL MAPS, BOOK AND PAGE.
- 4 M 66 MAPS, BOOK AND PAGE.
- () INDICATES RECORD DATA PER 7 PM 86, UNLESS OTHERWISE INDICATED.
- CALC'D INDICATES CALCULATED DATA.

**AMENDED
RECORD OF SURVEY**

FOR
GRAEAGLE LAND AND WATER COMPANY
OF THE RECORD OF SURVEY FILED IN BOOK 11 OF RECORDS
OF SURVEY AT PAGE 69, PLUMAS COUNTY RECORDS.
WITHIN SECTION 15
T. 22 N., R. 12 E., M.D.M.
PLUMAS COUNTY, CALIFORNIA
PREPARED BY:
BASTIAN ENGINEERING
P.O. BOX 280
GRAEAGLE, CALIFORNIA 96103