

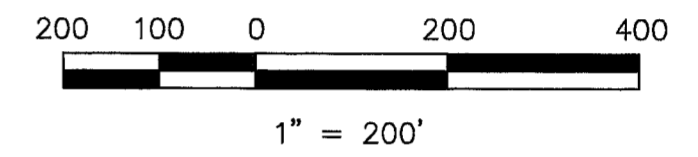
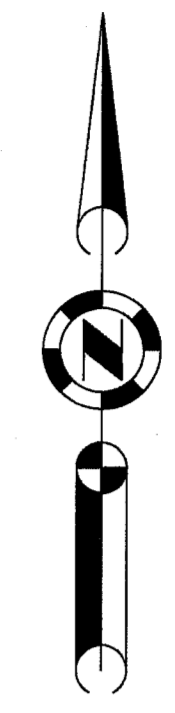
See Sheet 3  
Match line

Revised Parcel 2  
151.25 acres

See Sheet 3  
Match line

Revised Parcel 3  
151.22 acres

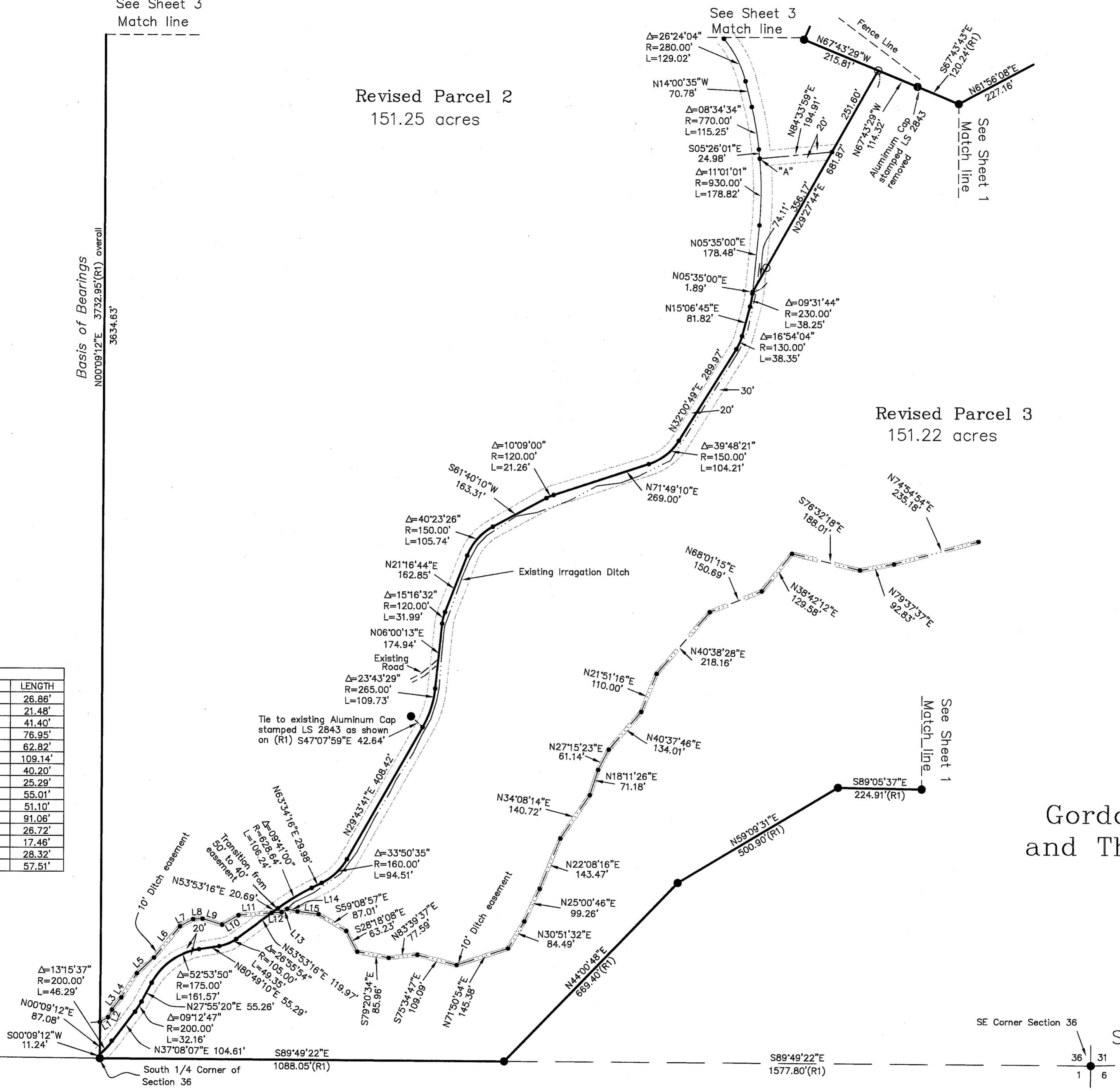
Basis of Bearings  
N00°09'12"E 3732.95'(R1) overall  
3634.63'



LEGEND

- RECORD point per 11 PM 18
- SET 5/8" Rebar with Aluminum Cap LS 2843
- Nothing found or set
- (R1) RECORD per 11 PM 18

LINE	BEARING	LENGTH
L1	N61°41'01"E	26.86'
L2	N22°41'57"E	21.48'
L3	N37°07'06"E	41.40'
L4	N32°02'22"E	76.95'
L5	N47°09'51"E	62.82'
L6	N39°26'07"E	109.14'
L7	N61°44'55"E	40.20'
L8	N86°57'45"E	25.29'
L9	S73°07'28"E	55.01'
L10	N59°38'59"E	51.10'
L11	N85°45'51"E	91.06'
L12	N85°45'51"E	26.72'
L13	N59°43'33"E	17.46'
L14	S76°24'19"E	28.32'
L15	S82°49'21"E	57.51'



RECORD OF SURVEY  
for  
Gordon H. & Suzanne L. Depaoli  
and Thomas A. & Kay Park Seeliger

Parcel 2 & 3 of 11 PM 18  
being a portion of Section 36  
T. 22 N., R. 12 E., M.D.M.  
being a portion of Section 31  
T. 22 N., R. 13 E., M.D.M.

Plumas County ~ California  
Scale 1" = 200' February, 1999

Hamby Surveying Inc.  
P.O. Box 1209  
Portola, CA 96122  
(530) 832-5571