

SURVEYORS STATEMENT

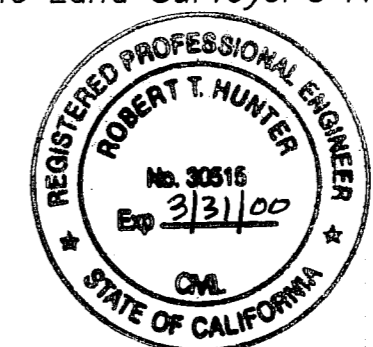
This map correctly represents a survey made by me or under my direction in conformance with the requirements of the Land Surveyor's Act at the request of Garry Shaffer and USDA-Plumas National Forest in June 1992.



Jay Burgess
Jay A. Burgess LS 4790

COUNTY SURVEYOR'S STATEMENT

This map has been examined in accordance with Section 8766 of the Land Surveyor's Act this 8th day of December 1998.



signed R. Tom Hunter
R. Tom Hunter RCE 30515
Registration expires 3-31-00
Plumas County Surveyor

COUNTY RECORDERS STATEMENT

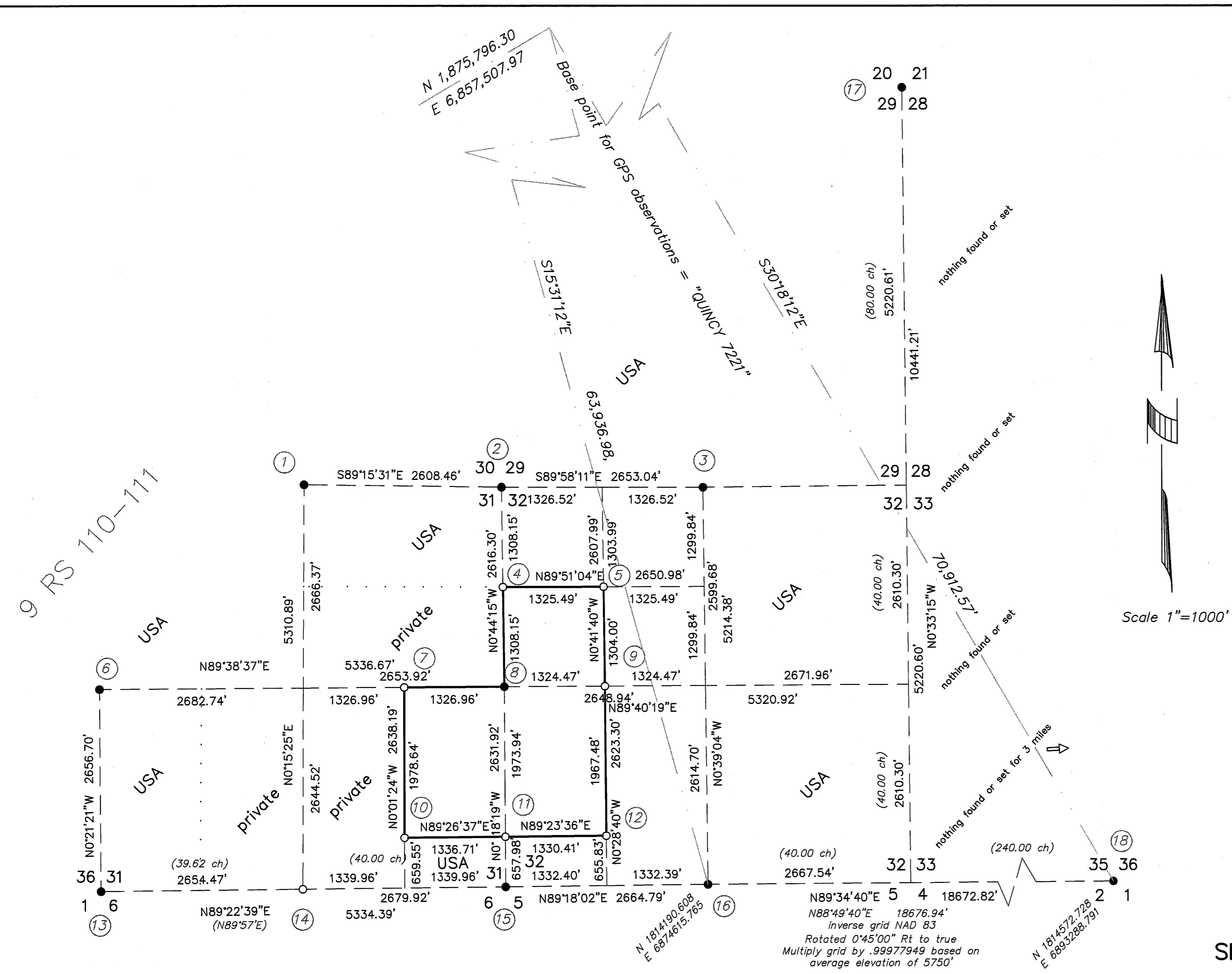
Filed this 8th day of December 1998 at 2:40 P.m.
in Book 11 of Records of Survey at Page 51 & 52 at the request of
of the County Surveyor.

Fee \$10⁰⁰
File No. 9938

signed Melinda Rother
Deputy
Judith Wells
Plumas County Recorder

Record of Survey
for
Shaffer-Ulch and USDA-Plumas National Forest
Sections 31 and 32 T23N R10E MDM
in the unincorporated territory of Plumas County California

BURGESS LAND SURVEYS
7036 Westside Rd. Ste. 202
Redding, Ca 96001
(530) 244-0996
FAX 244-4805



LEGEND

- Corner found as noted
- Corner determined this survey
- Key to corner notes on Sheet 2
- () GLO record data

BASIS OF BEARINGS

True north based on solar observation taken near the 1/4 corner of Secs. 30 and 31

N89°34'40"E 18672.82'
N88°49'40"E 18676.94'
inverse grid NAD 83
Rotated 0°45'00" Rt to true
Multiply grid by .99977949 based on
average elevation of 5750'