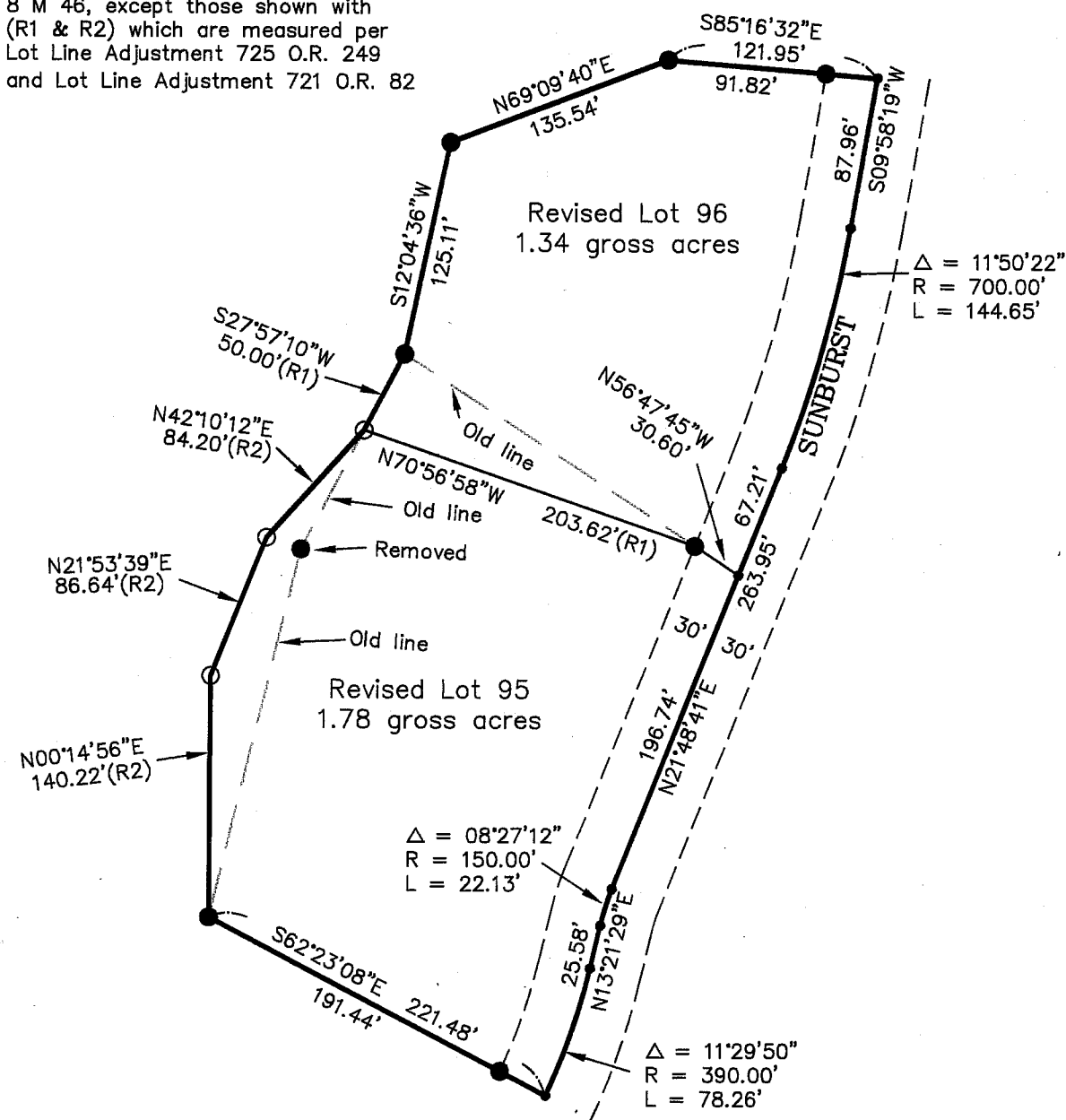


Note: All bearings, distances and curve data shown are record per Gold Mountain Unit 4 "SUNBURST", 8 M 46, except those shown with (R1 & R2) which are measured per Lot Line Adjustment 725 O.R. 249 and Lot Line Adjustment 721 O.R. 82



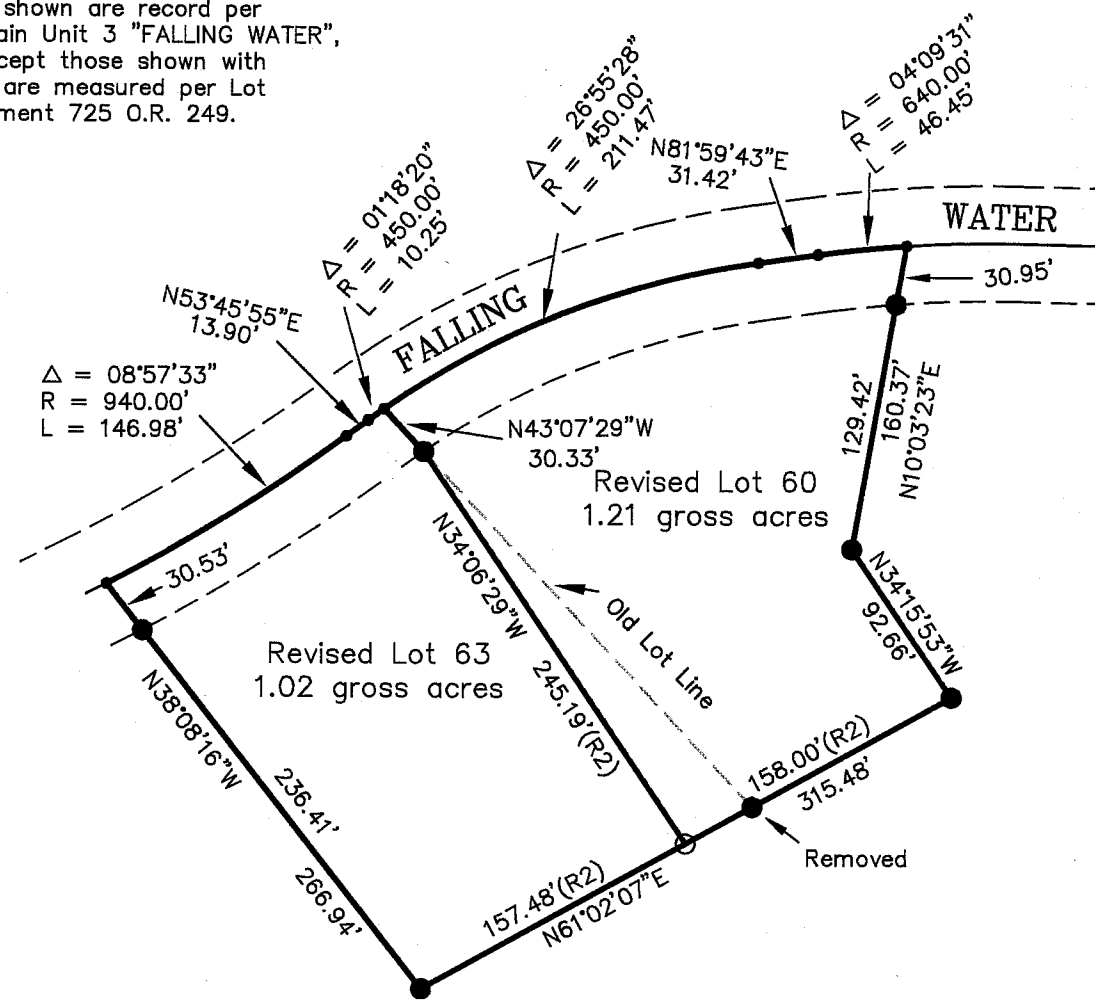
NOTE:
This Record of Survey was prepared to reflect a Lot Line Adjustment for which a resolution is Recorded in Book 725 of Official Records at page 249 and Book 721 of Official Records at page 82.

Revised Lots 95 & 96

LEGEND

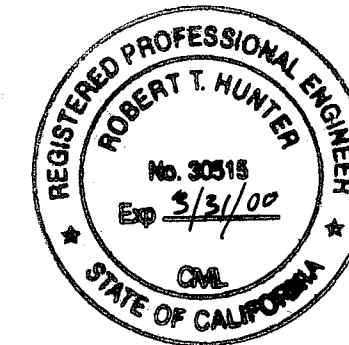
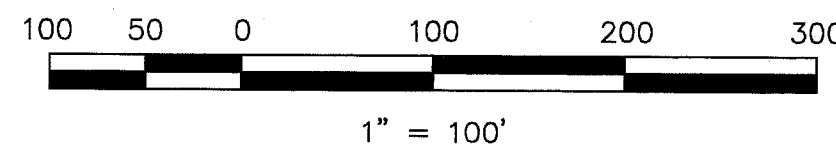
- FOUND Rebar with Aluminum Cap LS 2843
- SET 5/8" Rebar & Aluminum Cap LS 2843
- Nothing Found or Set
- (R1) RECORD per 721 OR 82
- (R2) RECORD per 725 OR 249

Note: All bearings, distances and curve data shown are record per Gold Mountain Unit 3 "FALLING WATER", 8 M 41, except those shown with (R2) which are measured per Lot Line Adjustment 725 O.R. 249.



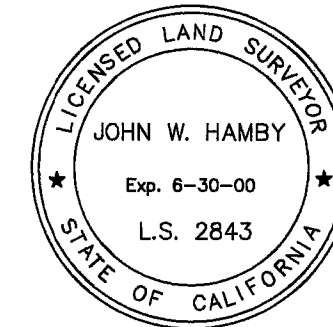
NOTE:
This Record of Survey was prepared to reflect a Lot Line Adjustment for which a resolution is Recorded in Book 725 of Official Records at page 249.

Revised Lots 60 & 63



SURVEYOR'S STATEMENT

This map correctly represents a survey made by me or under my direction in conformance with the requirements of the Land Surveyors' Act at the request of Darrel Garner in January, 1998.



John W. Hamby
John W. Hamby LS 2843

COUNTY SURVEYOR'S STATEMENT

This map has been examined in accordance with Section 8766 of the Land Surveyors' Act this 23rd day of February, 1998.

R. Tom Hunter
R. Tom Hunter RCE 30515
PLUMAS COUNTY SURVEYOR
License Expiration Date 3/31/00

RECORDER'S STATEMENT

Filed this 23 day of February, 1998 at 2:25P.m. in Book 11 of Record of Surveys, at page 32 & 33, at the request of the County Surveyor.

Fee \$10.00
File No. 1248

Judith Wells
County Recorder
by *Thomas R. Crawford*
Deputy

RECORD OF SURVEY
for
Gold Mountain Ranch, Inc.

Lots 60 & 63, Unit 3, "Falling Water" 8 M 41
and Lots 95 & 96, Unit 4, "Sunburst" 8 M 46
Gold Mountain Ranch, Inc.

A portion of Sections 15 & 17
T. 22 N., R. 13 E., M.D.M.

Plumas County ~ California
Scale 1" = 100' January, 1998

Hamby Surveying Inc.
P.O. Box 1209
Portola, CA 96122
(530) 832-5571