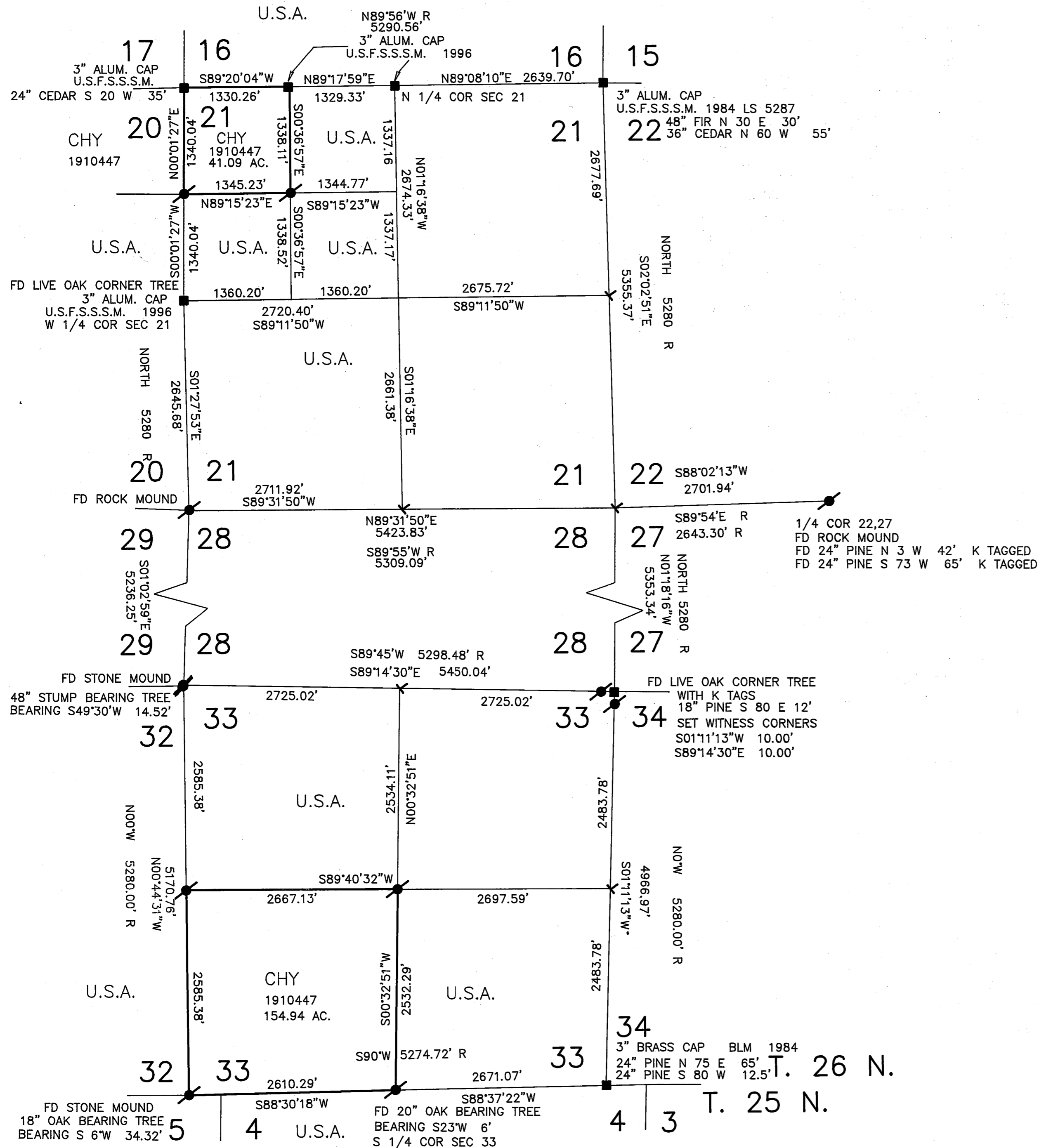


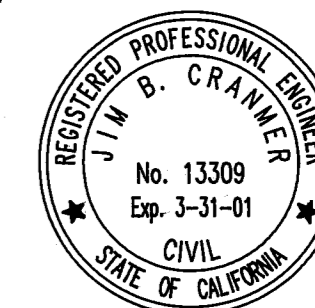
U.S.F.S.S.M. = UNITED STATES FOREST SERVICE STANDARD SURVEY MONUMENT



SURVEYOR'S STATEMENT:

THIS MAP CORRECTLY REPRESENTS A SURVEY MADE BY ME OR UNDER MY DIRECTION IN CONFORMANCE WITH THE REQUIREMENTS OF THE LAND SURVEYOR'S ACT AT THE REQUEST OF THE CHY CO. IN AUGUST, 1997.

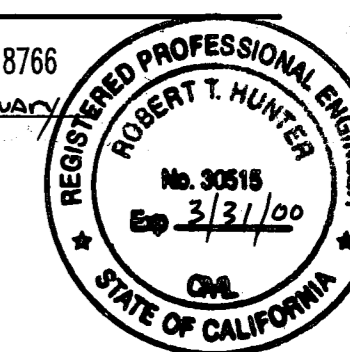
J.B. Cranmer
 JIM B. CRANMER, RCE 13309
 CRANMER ENGINEERING, INC.
 LICENSE EXPIRES: 3-31-01



COUNTY SURVEYOR'S STATEMENT:

THIS MAP HAS BEEN EXAMINED IN ACCORDANCE WITH SECTION 8766 OF THE LAND SURVEYOR'S ACT THIS 29TH DAY OF January 1998.

R. Tom Hunter
 R. TOM HUNTER
 RCE 30515
 LICENSE EXPIRES: 3/31/00



COUNTY RECORDER'S STATEMENT:

FILED THIS 29TH DAY OF January, 1998, AT 1:36 P.M. IN BOOK 11 OF SURVEYS, AT PAGE 31, AT THE REQUEST OF THE COUNTY SURVEYOR.

FEE: \$ 800

JUDITH WELLS
 COUNTY RECORDER,

DOC. NO. 720

Thomas R. Crawford
 BY DEPUTY

BASIS OF BEARINGS

THE MERIDIAN OF THIS SURVEY IS BASED UPON G.P.S. POSITIONS USING NAD 83, CALIFORNIA STATE COORDINATES, ZONE 1
 DISTANCES ARE GROUND
 BEARINGS ARE GROUND
 GROUND TO GRID : 0.999785

LEGEND:

- ✦ SET 1/2" REBAR & CAP STAMPED R.C.E. 13309
- FOUND MONUMENT AS NOTED
- < NOTHING FOUND, NOTHING SET
- R RECORD DATA PER G.L.O. NOTES

RECORD OF SURVEY FOR THE CHY CO.
 BEING A PORTION OF
SECTIONS 33,21 T.26N., R.11E., M.D.M.
 IN THE UNINCORPORATED TERRITORY OF
PLUMAS COUNTY, CALIFORNIA
 SCALE: 1" = 1000' AUGUST, 1997
CRANMER ENGINEERING INC.
 GRASS VALLEY, CALIFORNIA

