

IN THE STATE OF CALIFORNIA RECORD OF SURVEY

IN THE COUNTIES OF ALAMEDA, CONTRA COSTA, LOS ANGELES, MARIN, MONTEREY,
ORANGE, PLUMAS, RIVERSIDE, SAN BERNARDINO, SAN DIEGO, SANTA BARBARA, TUOLUMNE
AND VENTURA, ALL WITHIN THE STATE OF CALIFORNIA.

RIVERSIDE COUNTY FLOOD CONTROL AND WATER CONSERVATION DISTRICT
JULY 1996

PLUMAS COUNTY

RECORDER'S STATEMENT

FILED THIS 19TH DAY OF December, 1996,
AT 2:50 P.M. IN BOOK 10 OF RECORDS OF SURVEY,
AT PAGES 127-142, AT THE REQUEST OF THE COUNTY SURVEYOR.

JUDITH WELLS
COUNTY RECORDER

FEE \$
NO. 8735 BY: Neil Parks, DEPUTY

COUNTY SURVEYOR'S STATEMENT

THIS MAP HAS BEEN EXAMINED IN ACCORDANCE WITH SECTION
8766 OF THE LAND SURVEYORS' ACT THIS
19TH DAY OF December, 1996.

TOM HUNTER, COUNTY SURVEYOR

Tom Hunter
R.C.E. 30515 EXP. DATE MARCH 31, 2000

SURVEYOR'S STATEMENT

THIS MAP CORRECTLY REPRESENTS A SURVEY MADE BY ME OR
UNDER MY DIRECTION IN CONFORMANCE WITH THE REQUIRE-
MENTS OF THE LAND SURVEYORS' ACT, AT THE REQUEST OF
THE CALIFORNIA CONTINUOUSLY OPERATING REFERENCE STATION
(C.O.R.S.) COMMITTEE IN JANUARY 1996.

DAVID P. ZAPPE, CHIEF ENGINEER

David Zappe
R.C.E. 22035 EXP. DATE SEPTEMBER 30, 1997

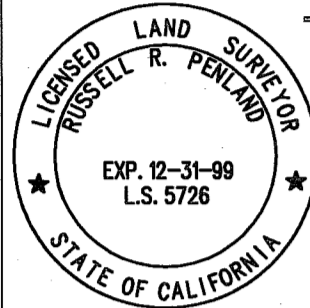
ALAMEDA COUNTY

COUNTY SURVEYOR'S STATEMENT

THIS MAP HAS BEEN EXAMINED IN ACCORDANCE WITH SECTION
8766 OF THE LAND SURVEYORS' ACT THIS
8th DAY OF OCTOBER, 1996.

OUSAMA H. KAWAR, COUNTY SURVEYOR

Russell R. Penland, Jr.
RUSSELL R. PENLAND, JR., DEPUTY COUNTY SURVEYOR
P.L.S. 5726 EXP. DATE DECEMBER 31, 1999



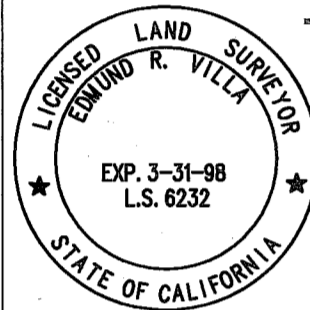
SANTA BARBARA COUNTY

COUNTY SURVEYOR'S STATEMENT

THIS MAP HAS BEEN EXAMINED IN ACCORDANCE WITH SECTION
8766 OF THE LAND SURVEYORS' ACT THIS
10th DAY OF SEPTEMBER, 1996.

EDMUND R. VILLA, DEPUTY COUNTY SURVEYOR

Edmund R. Villa
P.L.S. 6232 EXP. DATE MARCH 31, 1998



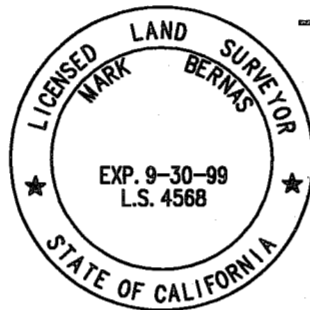
RIVERSIDE COUNTY

COUNTY SURVEYOR'S STATEMENT

THIS MAP HAS BEEN EXAMINED IN ACCORDANCE WITH SECTION
8766 OF THE LAND SURVEYORS' ACT THIS
18th DAY OF JULY, 1996.

GERALD A. STAXNER, COUNTY SURVEYOR

Mark S. Bernas
MARK BERNAS, DEPUTY COUNTY SURVEYOR
P.L.S. 4568 EXP. DATE SEPTEMBER 30, 1999



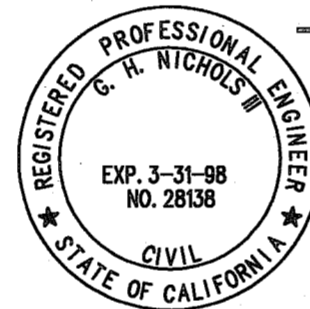
MONTEREY COUNTY

COUNTY SURVEYOR'S STATEMENT

THIS MAP HAS BEEN EXAMINED IN ACCORDANCE WITH SECTION
8766 OF THE LAND SURVEYORS' ACT THIS
9th DAY OF SEPTEMBER, 1996.

G. H. NICHOLS III, COUNTY SURVEYOR

G. H. Nichols III
R.C.E. 28138 EXP. DATE MARCH 31, 1998



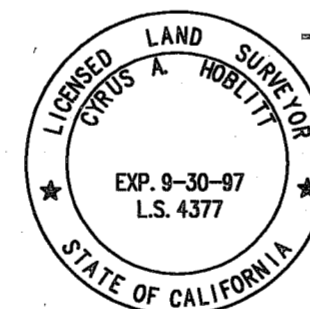
TUOLUMNE COUNTY

COUNTY SURVEYOR'S STATEMENT

THIS MAP HAS BEEN EXAMINED IN ACCORDANCE WITH SECTION
8766 OF THE LAND SURVEYORS' ACT THIS
4th DAY OF SEPTEMBER, 1996.

ROBERT E. TOWNSEND, COUNTY SURVEYOR

Cyrus A. Hoblitt
CYRUS A. HOBLITT, DEPUTY COUNTY SURVEYOR
P.L.S. 4677 EXP. DATE SEPTEMBER 30, 1997



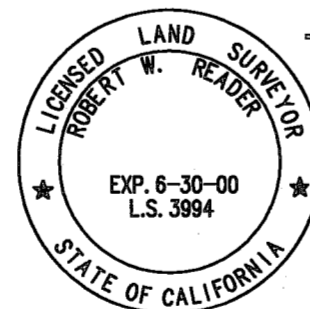
LOS ANGELES COUNTY

COUNTY SURVEYOR'S STATEMENT

THIS MAP HAS BEEN EXAMINED IN ACCORDANCE WITH SECTION
8766 OF THE LAND SURVEYORS' ACT THIS
20th DAY OF AUGUST, 1996.

HARRY W. STONE, COUNTY SURVEYOR

Robert W. Reader
ROBERT W. READER, DEPUTY COUNTY SURVEYOR
P.L.S. 3994 EXP. DATE JUNE 30, 2000



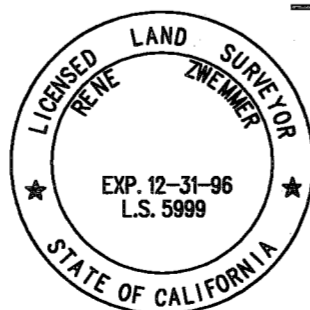
CONTRA COSTA COUNTY

COUNTY SURVEYOR'S STATEMENT

THIS MAP HAS BEEN EXAMINED IN ACCORDANCE WITH SECTION
8766 OF THE LAND SURVEYORS' ACT THIS
21st DAY OF AUGUST, 1996.

J. MICHAEL WOLFORD, COUNTY SURVEYOR

Rene Zwemmer
RENE ZWEMMER, DEPUTY COUNTY SURVEYOR
P.L.S. 5999 EXP. DATE DECEMBER 31, 1996



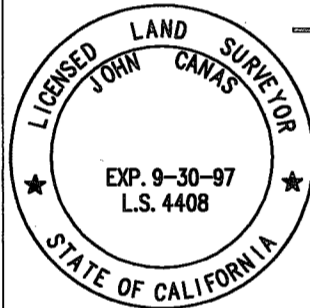
ORANGE COUNTY

COUNTY SURVEYOR'S STATEMENT

THIS MAP HAS BEEN EXAMINED IN ACCORDANCE WITH SECTION
8766 OF THE LAND SURVEYORS' ACT THIS
13th DAY OF AUGUST, 1996.

JOHN CANAS, COUNTY SURVEYOR

John Canas
P.L.S. 4408 EXP. DATE SEPTEMBER 30, 1997



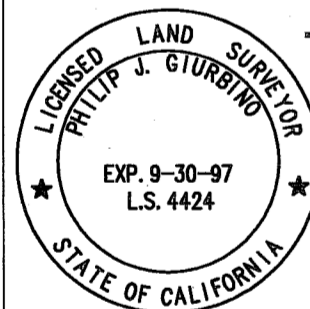
SAN DIEGO COUNTY

COUNTY SURVEYOR'S STATEMENT

THIS MAP HAS BEEN EXAMINED IN ACCORDANCE WITH SECTION
8766 OF THE LAND SURVEYORS' ACT THIS
13th DAY OF AUGUST, 1996.

TOM J. GIURBINO, COUNTY SURVEYOR

Philip J. Giurbino
PHILIP J. GIURBINO, DEPUTY
P.L.S. 4424 EXP. DATE SEPTEMBER 30, 1997



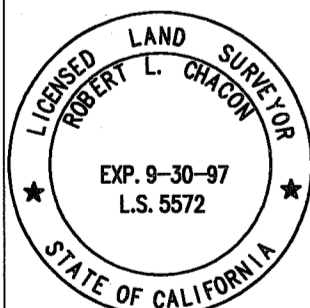
VENTURA COUNTY

COUNTY SURVEYOR'S STATEMENT

THIS MAP HAS BEEN EXAMINED IN ACCORDANCE WITH SECTION
8766 OF THE LAND SURVEYORS' ACT THIS
14th DAY OF AUGUST, 1996.

ROBERT L. BEACON, COUNTY SURVEYOR

Robert L. Beacon
P.L.S. 5572 EXP. DATE SEPTEMBER 30, 1997



SAN BERNARDINO COUNTY

COUNTY SURVEYOR'S STATEMENT

THIS MAP HAS BEEN EXAMINED IN ACCORDANCE WITH SECTION
8766 OF THE LAND SURVEYORS' ACT THIS
15th DAY OF AUGUST, 1996.

KEN A. MILLER, COUNTY SURVEYOR

Daniel C. Moye
DANIEL C. MOYE, DEPUTY COUNTY SURVEYOR
P.L.S. 5952 EXP. DATE DECEMBER 31, 1996

