

**ABBREVIATIONS**

BT: -- BEARING TREE  
BO: -- BEARING OBJECT

① **SECTION CORNER 23.24.26.25**

FOUND 3/4" I.P. WITH PLUG AND TAG  
STAMPED L.S. 2846 PER 8 RS 54 IN ROCK MOUND.

FROM WHICH BEARS:

FOUND: BT: 15" PINE WITH PLACERVILLE LUMBER CO. MARKER PLATE, S 24° E, 14.0' TO CENTER OF TREE. (16" PINE WITH PLACERVILLE LUMBER TAG S 24° E, 13.0' PER 9 RS 79).  
BT: 18" PINE WITH BLAZE AND K-TAG S 50° W 20.0' TO CENTER OF TREE. (18" BLAZED PINE S 51° W, 19.1 PER 9 RS 79)

⑤ **SECTION CORNER 26.25.35.36**

FOUND 3/4" I.P. OPEN, NO TAG IN ROCK MOUND.  
PER 9 R.S. 79. WIRED TAG TO I.P., STAMPED L.S. 7045.

FROM WHICH BEARS:

FOUND: BT: 20" PINE WITH BLAZE AND K-TAG N 31° E, 62.0' TO CENTER OF TREE. (22" PINE WITH BEARING TREE TAG N 33°30' E, 62.0 PER 9 RS 79).  
BT: 16" PINE WITH BLAZE AND K-TAG S 70° E 49.5' TO CENTER OF TREE. (18" BLAZED PINE S 71°30' E, 49.41' PER 9 RS 79)  
BT: 18" PINE WITH K-TAG S 16° E 73.0' TO CENTER OF TREE.  
BT: 21" PINE WITH K-TAG S 6° W 90.5' TO CENTER OF TREE.  
BT: 23" PINE WITH K-TAG N 51° W 85.0' TO CENTER OF TREE. (26" PINE N 54° W, 85.25' PER 9 RS 79)

② **NORTH 1/4 SECTION 25**

FOUND 3/4" I.P. WITH PLUG AND TAG (ILLEGIBLE) IN STREAMBED PER 3 R.S. 84. WIRED TAG TO I.P., STAMPED L.S. 7045.

FROM WHICH BEARS:

FOUND: BO: 1/2" REBAR WITH PLASTIC CAP STAMPED L.S. 3297, N 52°12' W, 2.41' (1/2" REBAR L.S. 3297 N 51°32' W, 2.42' PER 8 RS 92)

⑥ **SOUTH 1/4 SECTION 25**

FOUND 1 1/4" I.P. IN ROCK MOUND WITH 1/2" REBAR IN CENTER OF PIPE AND TAG WIRED TO REBAR STAMPED L.S. 4208. (1 1/4" I.P. WITH 1/2" REBAR INSIDE I.P. PER 8 RS 92)

FROM WHICH BEARS:

FOUND: BT: 22" PINE WITH BLAZE AND USFS SIGN N 71° W 8.5' TO CENTER OF TREE. (22" Y. PINE N 70° W, 12.7 LKS. PER 8 RS 92)  
BT: K-TAG ON ROTTED STUMP WIRED TOGETHER N 8° E , 60.5' TO CENTER OF STUMP. (30"± CUT STUMP, ROTTED, N 6° E, 90 LKS. TO FACE PER 8 RS 92)  
BT: STUMP HOLE S 71° W, 48' TO EDGE OF HOLE. (STUMP HOLE S 71° W, 73± LKS. PER 8 RS 92)

③ **WEST 1/4 SECTION 25**

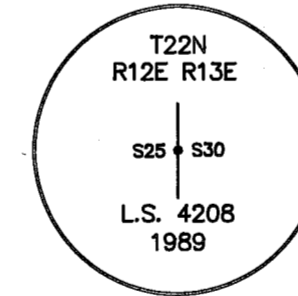
FOUND 3/4" I.P. WITH PLASTIC CAP (ILLEGIBLE) INSIDE 2" I.P. WITH BRASS TAG STAMPED L.S. 4208 WIRED TO PIPE IN MOUND OF STONES PER 3 R.S. 123.

NO ACCESSORIES.

④ FOUND USFS MONUMENT WITH A 3 1/4" O.D. ALUMINUM CAP STAMPED LS 4208 PER 8 RS 92.

FROM WHICH BEARS:

FOUND: BT: 14" PINE WITH SCRIBING, BRASS TAG STAMPED L.S. 4208 AND K-TAG, N 61° E, 11.5' (14" Y. PINE N 58° E 17.8 LKS. PER 8 RS 92)  
BT: 11" PINE WITH SCRIBING, BRASS TAG STAMPED L.S. 4208 AND K-TAG, N 34° W, 19.7' (14" Y. PINE N 34° W 29.4 LKS. PER 8 RS 92)

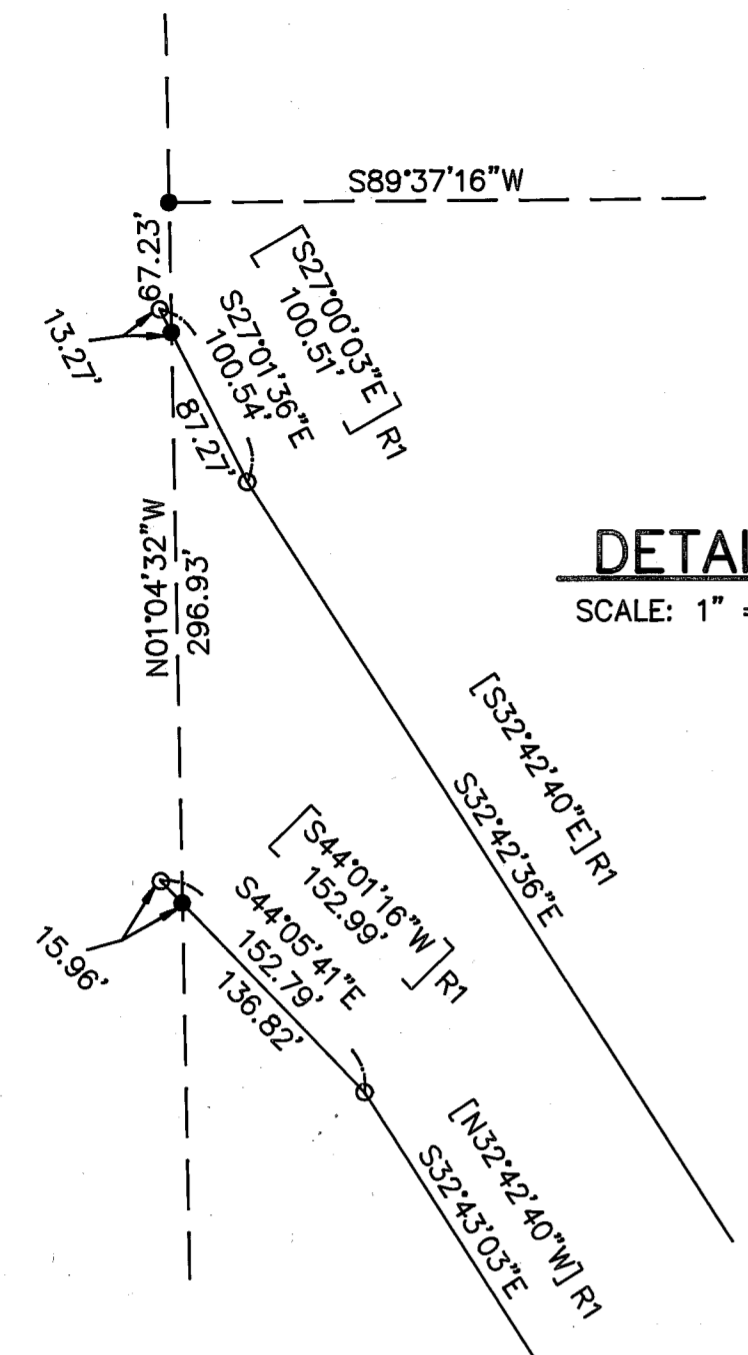


⑦ **SECTION CORNER 25.30.36.31**

FOUND 2" SQ. AXLE WITH TAG L.S. 4208 PER 8 R.S. 92, BENT.

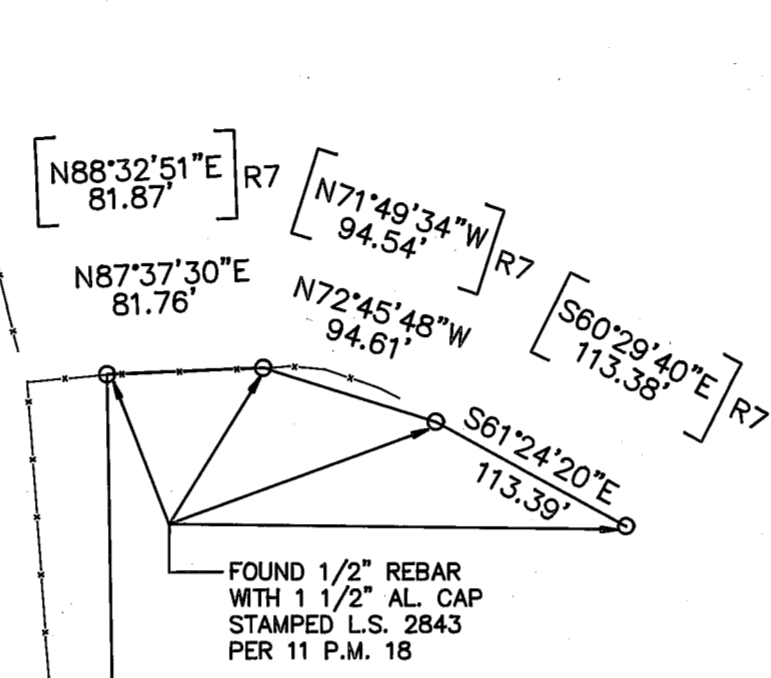
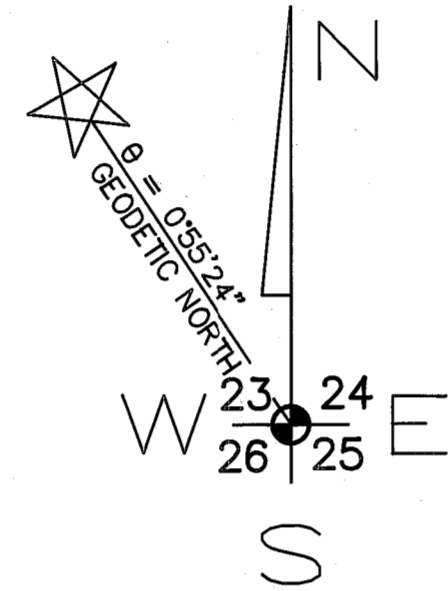
FROM WHICH BEARS:

FOUND: BO: CALTRANS RIGHT OF WAY MONUMENT N 04°56'04" W, 11.29'.



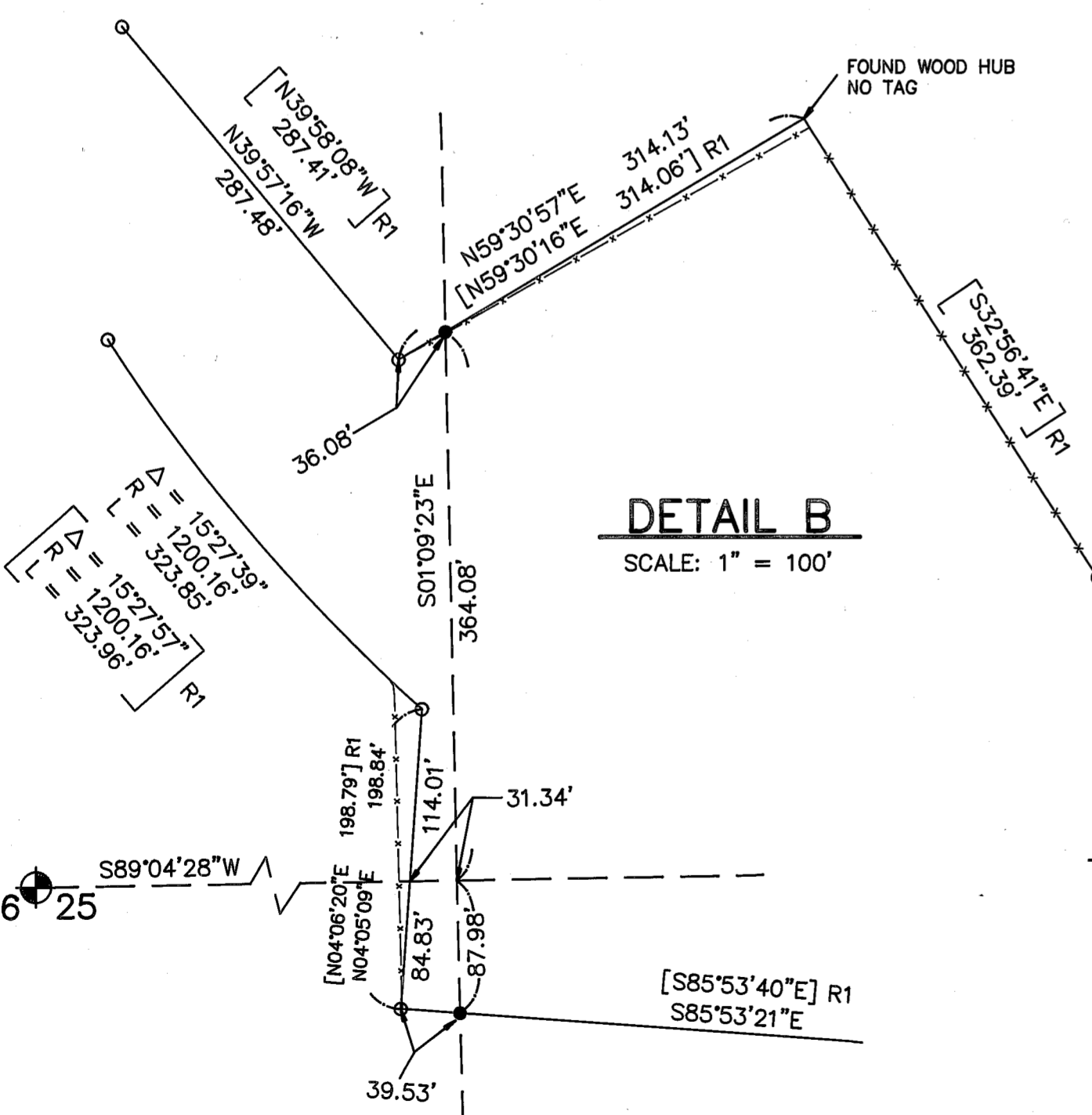
**DETAIL A**

SCALE: 1" = 100'



**DETAIL C**

SCALE: 1" = 100'



**DETAIL B**

SCALE: 1" = 100'

**RECORD OF SURVEY**

FOR

SIERRA PACIFIC INDUSTRIES, INC.  
AND

GRAEAGLE LAND AND WATER COMPANY

WITHIN SECTION 25  
T. 22 N., R. 12 E., M.D.M.  
PLUMAS COUNTY, CALIFORNIA

PREPARED BY:

LARRY FITES ENGINEERING  
P.O. BOX 20308  
GRAEAGLE, CALIFORNIA 96103

AUGUST 1996

SHEET 2 OF 2