

T. 27 N. R. 5 E.

SURVEYOR'S STATEMENT

This map correctly represents a survey made by me or under my direction in conformance with the requirements of the Land Surveyors Act of the request of teh U.S.D.A. Forest Service on Noember 1996.



John S. Rea ~ L.S. 5176 Expires 6-30-99

COUNTY SURVEYOR'S STATEMENT

This map has been examined in accordance with Section 8766 of the Land Surveyors Act this

16th day of December 1996.

R Tom Hunter R. Tom Hunter R.C.E. No. 30515 Plumas County Surveyor Licence Expires 3-31-00



RECORDER'S STATEMENT

Filed this 16th day of December 1996, at 1:45 P.M. in Book 10 of Record of Surveys at page 124 at the request of the County Surveyor.

Judith Wells Plumas County Recorder

by: Neil Parks Deputy

Fee \$800 File No. 8625

LEGEND:

- Found Corner as Noted. Set Corner as Noted. Property Lines Marked and Posted. Lines not Surveyed, Data per 7RS 20. G.L.O. Record Data, distance in chains. Data per Book 7 Record of Surveys page 20. Private Property.

SURVEY HISTORY:

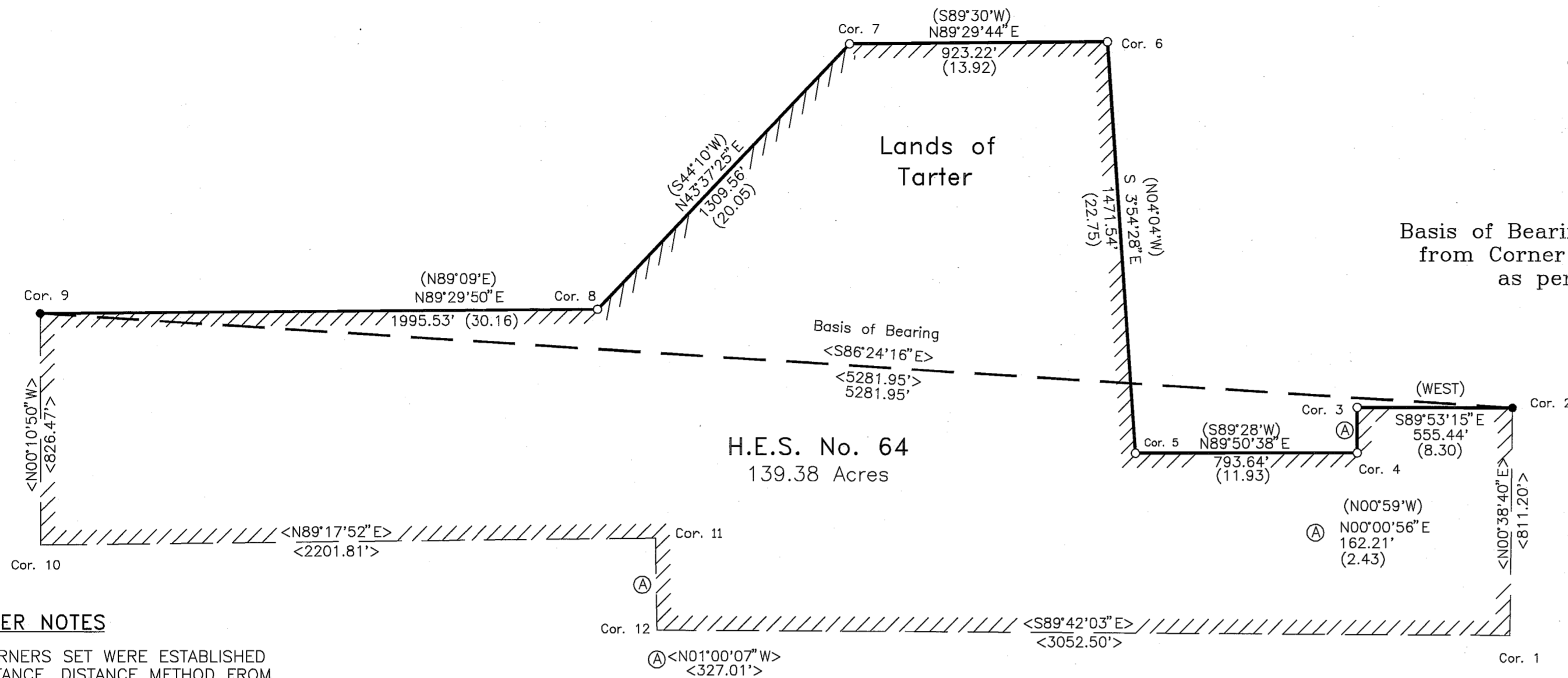
Township. Unsurveyed 1913 Homestead Entry Survey No. 64 1985 Richard Reger . . . LS 4894

RECORD OF SURVEY FOR LASSEN NATIONAL FOREST

Being a portion of HES No. 64 in T. 27 N. R. 5 E., MDM in the unincorporated territory of Plumas County, CA.

By Lassen National Forest 55 South Sacramento Street Susanville, California 96130

Scale: 1" = 400' November 1996 SHEET 1 OF 1



CORNER NOTES

Note: ALL CORNERS SET WERE ESTABLISHED BY DISTANCE, DISTANCE METHOD FROM FOUND ORIGINAL EVIDENCE. (BEARING TREES.)

- Cor. 2: FOUND A USDA MONUMENT IN A 2 1/2' DIA. BY 1' HIGH MOUND OF STONE. FOUND A 9" WHITE FIR, N13°05'E, 2.65', SCRIBED: 2HES64BT. FOUND A 8" FIR, N11°E, 2.90'. FOUND A 17" WHITE FIR, S14°37'E, 16.82', WITH HEALED BLAZE. FOUND A 14" FIR, S11°E, 17.2'.
Cor. 3: SET A STANDARD USDA MONUMENT 22" IN GROUND 6" ABOVE IN A 2 1/2" DIA. BY 1' HIGH MOUND OF STONE. FOUND A 26" WHITE FIR, S54°05'E 5.28', WITH HEALED BLAZE. FOUND A 10" FIR, S86°15'E, 8 LINKS-DISTANCE. FOUND A 27 1/2" WHITE FIR, N02°06'E, 19.14', WITH HEALED BLAZE. FOUND A 6" FIR, N06°45'E, 29 LINKS-DISTANCE.
Cor. 4: SET A STANDARD USDA MONUMENT 16" IN GROUND 12" ABOVE IN A 2 1/2" DIA. BY 1' HIGH MOUND OF STONE. FOUND A DOWN & ROTTEN PINE, N65°33'E, 8.58', SCRIBED: 4HES64. FOUND A 28" WHITE FIR, S57°18'W, 11.88', WITH HEALED BLAZE. FOUND A 10" FIR, S57°20'W, 18 LINKS-DISTANCE.
Cor. 5: SET A STANDARD USDA MONUMENT 22" IN GROUND 6" ABOVE IN A 2 1/2" DIA. BY 6" HIGH MOUND OF STONE. FOUND A 33" WHITE FIR, S41°56'W, 16.50', WITH HEALED BLAZE. FOUND A 41" WHITE FIR, N61°34'W, 15.18', WITH HEALED BLAZE.

- Cor. 6: SET STANDARD USDA MONUMENT 20" IN GROUND 8" ABOVE IN A 2' DIA. BY 6" HIGH MOUND OF STONE. NEW: A 10" WHITE FIR, N00°34'W, 8.47', SCRIBED: 6HES64BT. FOUND A 42" Y. PINE, S88°10'E, 21.12', WITH HEALED BLAZE. FOUND A 60" CEDAR, S26°30'W, 4.62', WITH HEALED BLAZE. FOUND A 2' DIA. BY 1' HIGH STONE MOUND, BEARS: N30°W, 4.1'.
Cor. 7: SET STANDARD USDA MONUMENT 16" IN GROUND 12" ABOVE IN A 2' DIA. BY 1' HIGH MOUND OF STONE. FOUND A 40" YELLOW PINE, S76°31'W, 12.54', WITH HEALED BLAZE. FOUND A 45" YELLOW PINE, S81°53'E, 14.52', WITH HEALED BLAZE. FOUND A SMALL STONE MOUND BEARS N20°E, 4' FROM CORNER.
Cor. 8: SET A STANDARD USDA MONUMENT 22" IN GROUND 6" ABOVE IN A 2 1/2" BY 6" HIGH MOUND OF STONE. FOUND A 48" SUGAR PINE, S45°09'E, 27.72', SCRIBED: 8HES6. FOUND A DOWN & ROTTEN PINE, S49°00'W, 25.08', SCRIBED: 8HES, W/TAG.
Cor. 9: FOUND USDA MONUMENT IN A 2' DIA. MOUND OF STONE. FOUND A 10" WHITE FIR, N59°30'W, 8.32', WITH HEALED BLAZE. FOUND A 17" LODGEPOLE, N46°11'E, 15.76', SCRIBED: 9HES64BT. FOUND A 20" DOWN LODGEPOLE, N09°W, 34 LINKS-DISTANCE.

Vicinity Map

