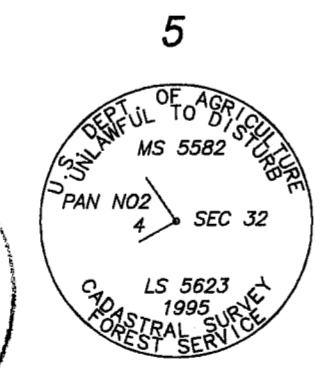
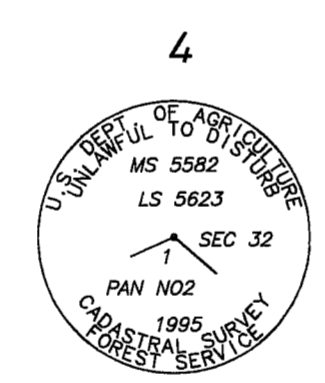
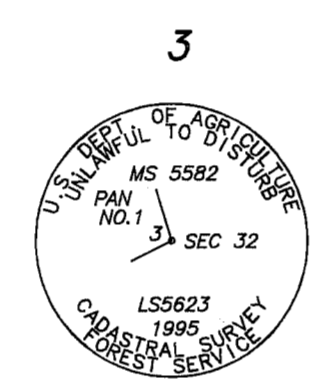
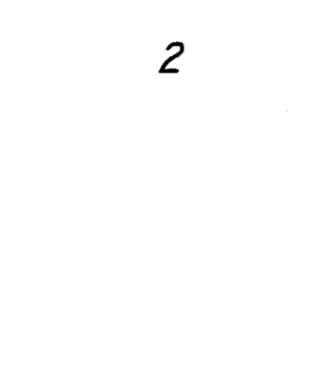
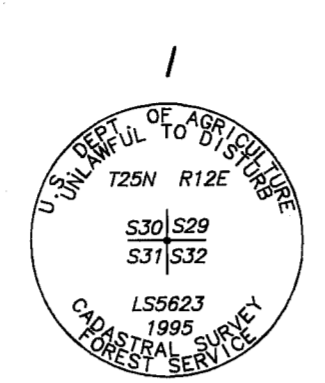


TREE NUMBER	DISTANCE FROM NF BOUNDARY
107	19.5 FT
108	3.3 FT
109	8.6 FT
110	42.6 FT
111	21.6 FT
112	2.7 FT
113	10.3 FT
114	47.9 FT
119	64.1 FT
120	54.9 FT
137	29.4 FT
139	12.1 FT
140	14.5 FT
141	24.1 FT
* 142	83.1 FT

\* FOUR TREES WITHIN A 25 FT RADIUS

**CORNER NOTES**



**RECORD** SET A VOLCANIC STONE 18"X10"X4" FOR CORNER TO SECTIONS 29,30,31,32  
 FWB: 60" FIR S45°E 5 LKS  
 28" FIR S51°W 45 LKS  
 8" FIR S87°W 23 LKS  
 7" FIR N42°E 26 LKS

**FOUND** 8"X36"X36" MOS  
 FWB: 40" RF STUMP S49°38'W 29.6 FT(45 LKS)  
 21" RF SNAG N82°05'W 15.2 FT(23 LKS)  
 20" RF STUMP W/FACE N42°16'E 20.5 FT(31 LKS)

**SET** STD USFS DRIVE-IN MON W/36" OF ROD 8" AG IN A 6"X24"X24" MOS  
 FWB: 7" WF S68°57'W 2.9 FT SCRIBED T25NR12ES31BT  
 14" RF S52°59'E 40.5 FT SCRIBED T25NR12ES32BT

**RECORD** A POST IN A STONE MOUND  
 FWB: 15" FIR S60°30'W 57.6 SCRIBED 2PM15582ABT  
 12" SPRUCE S47°30'W 56.8 SCRIBED 2PM15582ABT

**FOUND** 1 1/2" DIAMETER STEEL PIPE WITH 1 3/4" BRASS CAP, NO LS OR RCE NUMBER, 18" AG IN A 6"X48"X48" MOS  
 FWB: 26" LP S46°08'W 57.6 FT UNREADABLE SCRIBING VISIBLE

**SET** NOTHING AT CORNER LOCATION  
 FWB: 14" WF N79°07'E 13.5 FT SCRIBED 2PM5582ABT

**RECORD** A POST IN A STONE MOUND  
 FWB: 30" FIR S31°00'E 42.0 FT SCRIBED 3PM15582ABT  
 8" FIR N42°15'W 9.4 FT SCRIBED 3PM15582ABT

**FOUND** AN 8"X60"X60" MOS  
 FWB: A 48" DIA HOLE W/36" DECAYED TREE LAYING DOWN S29°30'E 42.0 FT  
 16" FIR SNAG NO FACE N39°36'W 9.4 FT

**SET** STD USFS DRIVE-IN MON 12" AG IN A 8"X36"X36" MOS  
 FWB: 15" RF S16°00'E 28.1 FT SCRIBED 3PM15582BT  
 6" RF S71°12'E 14.8 FT SCRIBED 3PM15582BT

**RECORD** A POST IN A STONE MOUND  
 FWB: 12" FIR N03°30'W 36.5 FT SCRIBED 1PM25582ABT  
 14" FIR N74°00'W 37.5 FT SCRIBED 1PM25582ABT

**FOUND** AN 8"X60"X60" MOS  
 FWB: 15" RF SNAG N02°54'W 36.5 FT SCRIBING VISIBLE  
 24" RF STUMP N75°34'W 37.5 FT

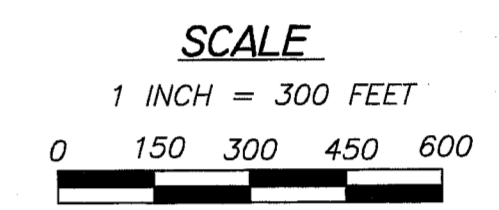
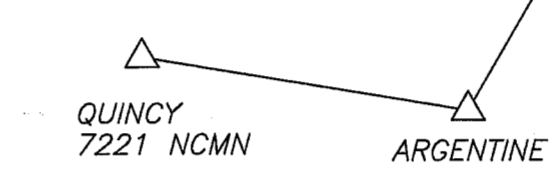
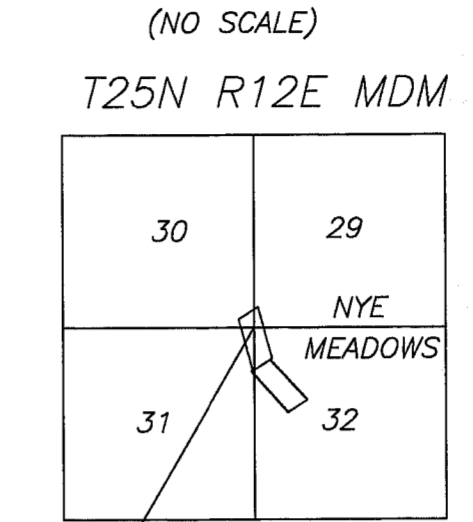
**SET** STD USFS DRIVE-IN MON W/36" OF ROD 10" AG IN A 8"X36"X36" MOS  
 FWB: 8" RF N86°17'E 29.5 FT SCRIBED 1PM25582BT  
 19" RF N36°42'E 16.2 FT SCRIBED 1PM25582BT

**RECORD** A POST IN A STONE MOUND  
 FWB: 11" FIR S29°45'E 5.2 FT SCRIBED 4PM25582ABT  
 10" FIR N64°00'W 19.0 FT SCRIBED 4PM25582ABT

**FOUND** A 8"X36"X36" MOS  
 FWB: 27" RF W/CLOSED FACE S25°03'E 5.2 FT  
 24" WF W/CLOSED FACE N63°00'E 19.0 FT

**SET** 5/8" DIA REBAR W/STD USFS ALUMINUM CAP 8" AG IN A 8"X24"X24" MOS

**CONTROL SCHEME & PROJECT LOCATION**



**GENERAL NOTES**

A STANDARD UNITED STATES FOREST SERVICE (USFS) DRIVE-IN MONUMENT IS A 5/8" DIAMETER ALUMINUM ROD WITH A 3-1/4" ALUMINUM CAP EMBOSSED WITH THE USFS LOGO.

**CALIFORNIA COORDINATE SYSTEM OF 1983 (CC83), ZONE I**

CORNER	NORTHING	EASTING
1	1880941.757	6935761.524
2	1881509.340	6935870.988
3	1880090.042	6936253.776
4	1880055.868	6936201.057
5	1878954.605	6937221.704

**NONSTANDARD ABBREVIATIONS**

FWB	FROM WHICH BEARS
BT	BEARING TREE
MOS	MOUND OF STONE
MON	MONUMENT
WF	WHITE FIR
RF	RED FIR
LP	LODGEPOLE PINE
AG	ABOVE GROUND

**BASIS OF BEARING**

MEASURED BEARINGS AND DISTANCES ARE GRID. THEY ARE BASED ON THE CALIFORNIA COORDINATE SYSTEM OF 1983(CCS83), ZONE 1.

θ AT THE NE COR OF SECTION 31 IS 00°52'23" MULTIPLY GRID DISTANCES BY 1.000335 TO GET GROUND DISTANCES.

CONTROL WAS DONE WITH GPS, TRIMBLE NAVIGATION, 4000 ST, SINGLE FREQUENCY RECEIVERS. CONTROL WAS BROUGHT IN USING THE FOLLOWING STATIONS:

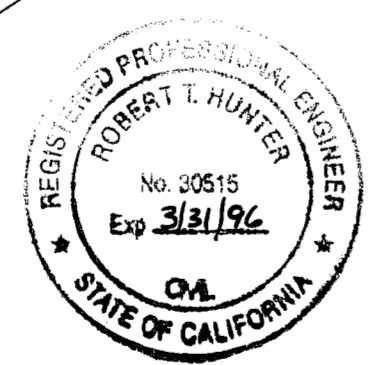
"QUINCY 7221 NCMN"  
 LATITUDE: 39°58'28.37468" N 1875796.226 N  
 LONGITUDE: 120°56'39.88049" W 6857508.129 E

"ARGENTINE"  
 LATITUDE: 39°57'08.09764" N 1868338.961 N  
 LONGITUDE: 120°45'46.69940" W 6908470.195 E

AS PUBLISHED BY NATIONAL GEODETIC SURVEYS (NGS) IN FEBRUARY 1987.

**LEGEND**

- FOUND CORNER
  - SET CORNER
  - PROPERTY BOUNDARY MARKED AND POSTED
  - TREES CUT ON NATIONAL FOREST LAND
  - RECORD
- A. WATSON, GOVERNMENT LAND OFFICE, SURVEYED MS 5582A IN OCT 1921



**SURVEYOR'S STATEMENT**

This map correctly represents a survey made by me or under my direction in conformance with the requirements of the Land Surveyors' Act at the request of Plumas National Forest in 1/26, 1996.  
 William G. Snow  
 William Glenn Snow L.S. 5623  
 License Exp. Date 12/31/98

**COUNTY SURVEYOR'S STATEMENT**

This map has been examined in accordance with Section 8766 of the Land Surveyors' Act this 5<sup>TH</sup> day of February, 1996.  
 R. Tom Hunter  
 R. Tom Hunter R.C.E. 30515  
 Plumas County Surveyor  
 License Exp. Date 03/31/96

**RECORDER'S STATEMENT**

Filed this 5<sup>TH</sup> day of February, 1996 at 2:30 P.M. in Book 10 of Records of Surveys, at page 112, at the request of the County Surveyor.  
 Fee: \$800  
 File No: 758  
 Judith Wells  
 County Recorder  
 By: Jo Ann Van Milder  
 Deputy

**RECORD OF SURVEY**

LOCATED IN SECTION 29 30 31 32 T25N R12E MDM PLUMAS COUNTY, CALIFORNIA FOR PLUMAS NATIONAL FOREST PO BOX 11500 QUINCY, CALIFORNIA 95971  
 SURVEY CREW: J. SCHMIDT R. KNOETTGEN  
 DRAWN BY: R. KNOETTGEN  
 SHEET 1 OF 1