

RECORD OF SURVEY

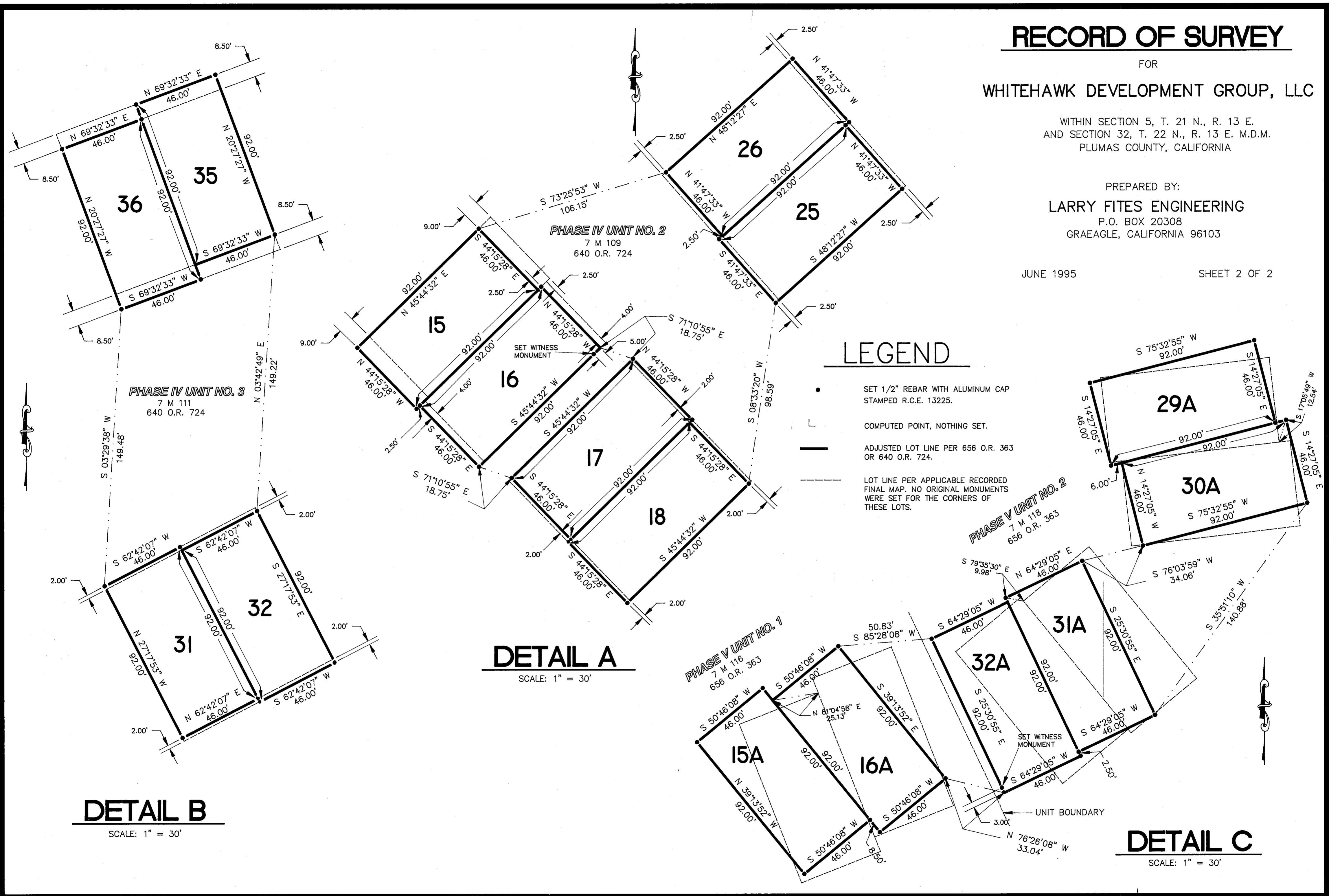
FOR
WHITEHAWK DEVELOPMENT GROUP, LLC

WITHIN SECTION 5, T. 21 N., R. 13 E.
AND SECTION 32, T. 22 N., R. 13 E. M.D.M.
PLUMAS COUNTY, CALIFORNIA

PREPARED BY:
LARRY FITES ENGINEERING
P.O. BOX 20308
GRAEAGLE, CALIFORNIA 96103

JUNE 1995

SHEET 2 OF 2



LEGEND

- SET 1/2" REBAR WITH ALUMINUM CAP STAMPED R.C.E. 13225.
- L COMPUTED POINT, NOTHING SET.
- ADJUSTED LOT LINE PER 656 O.R. 363 OR 640 O.R. 724.
- - - LOT LINE PER APPLICABLE RECORDED FINAL MAP. NO ORIGINAL MONUMENTS WERE SET FOR THE CORNERS OF THESE LOTS.

DETAIL A

SCALE: 1" = 30'

DETAIL B

SCALE: 1" = 30'

DETAIL C

SCALE: 1" = 30'