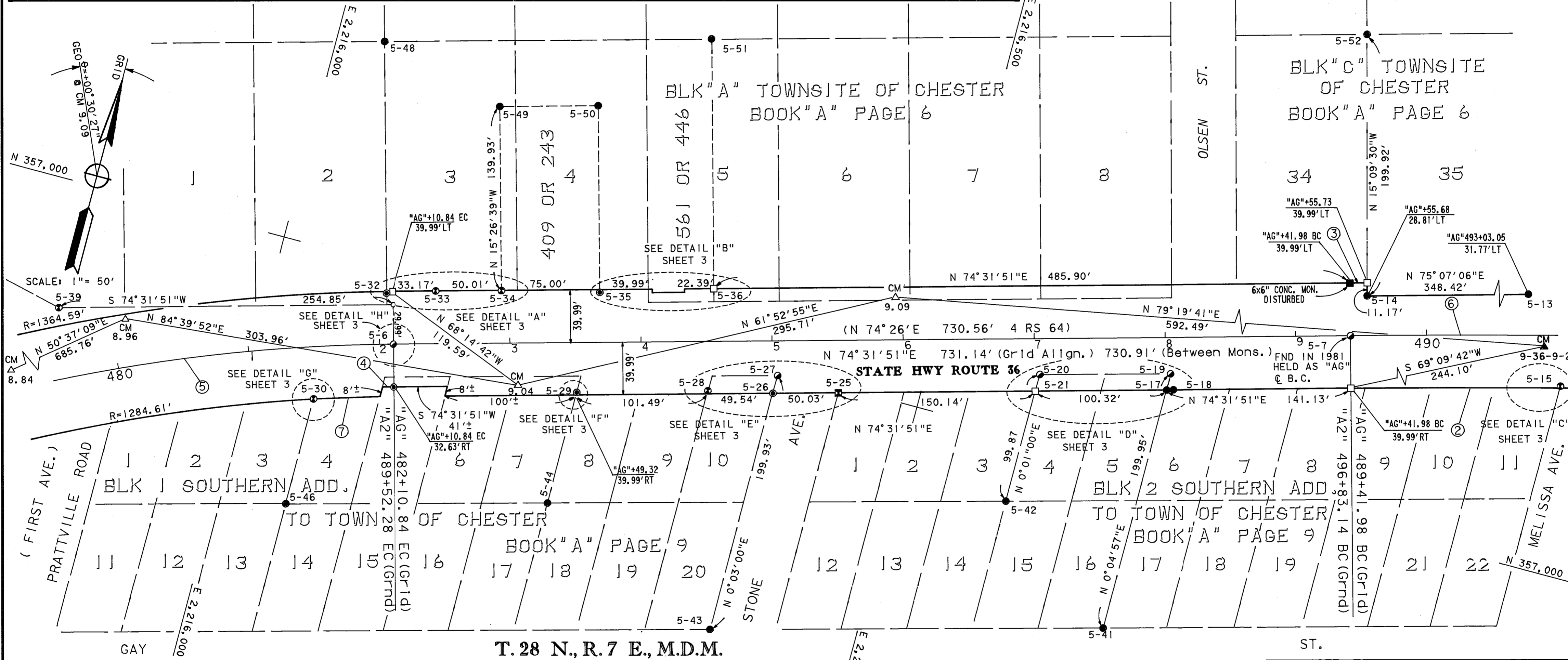


FOUND POINTS

LEGEND

COORDINATES				RECORDED			COORDINATES				RECORDED		
SEC	PT	NORTH	EAST	BK	OF	PG	SEC	PT	NORTH	EAST	BK	OF	PG
5	6	357,443.067	2,216,101.704	4	RS	64	5	32	357,480.240	2,216,086.219	4	RS	64
5	7	357,638.015	2,216,806.137	4	RS	64	5	33	357,490.323	2,216,122.802	4	RS	64
5	13	357,758.925	2,217,148.431	4	RS	64	5	34	357,503.626	2,216,171.012	4	RS	64
5	14	357,669.443	2,216,811.701	4	RS	41	5	35	357,523.569	2,216,243.315	4	RS	64
5	15	357,642.049	2,216,970.730	4	RS	64	5	36	357,546.824	2,216,327.213	4	RS	64
5	17	357,561.885	2,216,680.775	4	RS	64	5	39	357,403.918	2,215,847.867	4	RS	12
5	18	357,562.092	2,216,681.796	4	RS	64	5	41	357,374.464	2,216,680.517	4	RS	64
5	19	357,574.415	2,216,680.805	4	RS	64	5	42	357,448.274	2,216,684.078	4	RS	64
5	20	357,548.143	2,216,584.107	4	RS	64	5	43	357,295.831	2,216,391.019	4	RS	64
5	21	357,535.020	2,216,584.171	4	RS	64	5	44	357,356.512	2,216,246.521	4	RS	64
5	25	357,494.889	2,216,439.438	4	RS	64	5	46	357,304.265	2,216,053.324	4	RS	64
5	26	357,483.662	2,216,391.001	4	RS	64	5	48	357,663.296	2,216,035.645	4	RS	64
5	27	357,495.763	2,216,391.193	4	RS	64	5	49	357,638.499	2,216,133.750	4	RS	64
5	28	357,470.703	2,216,342.815	4	RS	64	5	50	357,658.491	2,216,206.048	4	RS	64
5	29	357,443.214	2,216,245.595	4	RS	64	5	51	357,729.844	2,216,276.583	4	RS	64
5	30	357,386.691	2,216,053.262	4	RS	64	5	52	357,862.411	2,216,759.423	4	RS	64

■	FOUND R/W MONUMENT	●	SET 1 1/8" COPPER DISK STAMPED "CALTRANS" IN SIDEWALK
□	SET 3/4" REBAR w/ALUM. CAP STAMPED "CALTRANS"	▲	FOUND CALTRANS CONTROL LINE MONUMENT
●	MONUMENT FOUND AS NOTED	△	SET CALTRANS CONTROL LINE MONUMENT CALIF. DEPT. OF TRANSPORTATION 2 1/4" BRASS DISK STAMPED AS NOTED
⊙	MONUMENT FOUND AS NOTED AND DESTROYED DURING CONSTRUCTION	▲	FD. N.G.S. TRIANGULATION STATION
⊙	MONUMENT FOUND AS NOTED AND DESTROYED DURING CONSTRUCTION	▲	FD. CALTRANS HORIZONTAL CONTROL STATION
⊙	MONUMENT FOUND AS NOTED AND DESTROYED DURING CONSTRUCTION REPLACED WITH 1 1/8" COPPER DISK STAMPED "CALTRANS"		5-14 SECTION-POINT No.
⊙	MONUMENT FOUND AS NOTED AND DESTROYED DURING CONSTRUCTION REPLACED WITH 3/4" REBAR & ALUM. CAP STAMPED "CALTRANS"	○	NO MONUMENT FOUND OR SET



T. 28 N., R. 7 E., M.D.M.
SECTION 5

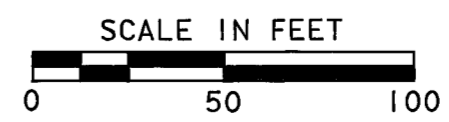
No.	RAD	Δ	LENGTH
①	1364.59'	0° 12' 02"	4.78'
②	9957.02'	0° 55' 08"	159.69'
③	10037.00'	0° 04' 44"	13.80'
④	1291.98'	9' ±	
⑤	1324.60'	44° 09' 17"	1020.80'
⑥	9997.01'	20° 18' 00"	3541.96'
⑦	1284.62'	51' ±	

EXCEPTING THOSE SHOWN OTHERWISE, ALL DISTANCES AND BEARINGS ARE GRID, BASED ON THE CALIFORNIA COORDINATE SYSTEM OF 1927, ZONE 1. TO OBTAIN GROUND LEVEL DISTANCES, MULTIPLY GRID DISTANCES BY 1.0002803.

GRID WAS ESTABLISHED FROM U.S.C. & G.S. TRIANGULATION STATIONS:

CHESTER N 348,414.47 & GOULD N 354,609.31
AIRPORT E 2,212,062.33 E 2,234,383.58

SUPPLEMENTARY INFORMATION MAY BE OBTAINED FROM THE DISTRICT OFFICE, SURVEY DEPARTMENT OR RIGHT OF WAY ENGINEERING DEPARTMENT, 1657 RIVERSIDE DRIVE, REDDING, CA.



STATE OF CALIFORNIA
BUSINESS, TRANSPORTATION, AND HOUSING AGENCY
DEPARTMENT OF TRANSPORTATION
DISTRICT 02
**RECORD OF SURVEY
OF MONUMENTATION**
IN SECTION 5
T. 28 N., R. 7 E., M.D.M.
IN THE COUNTY OF PLUMAS
ALONG STATE ROUTE 36
P.M. 8.9 TO P.M. 9.2
DATE 9-25-95 SHEET 2 OF 3