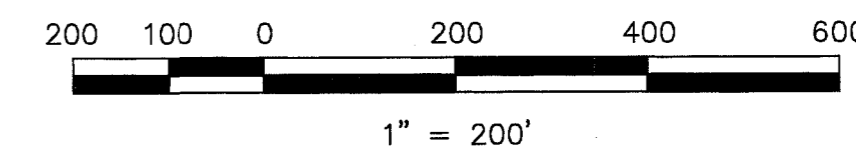
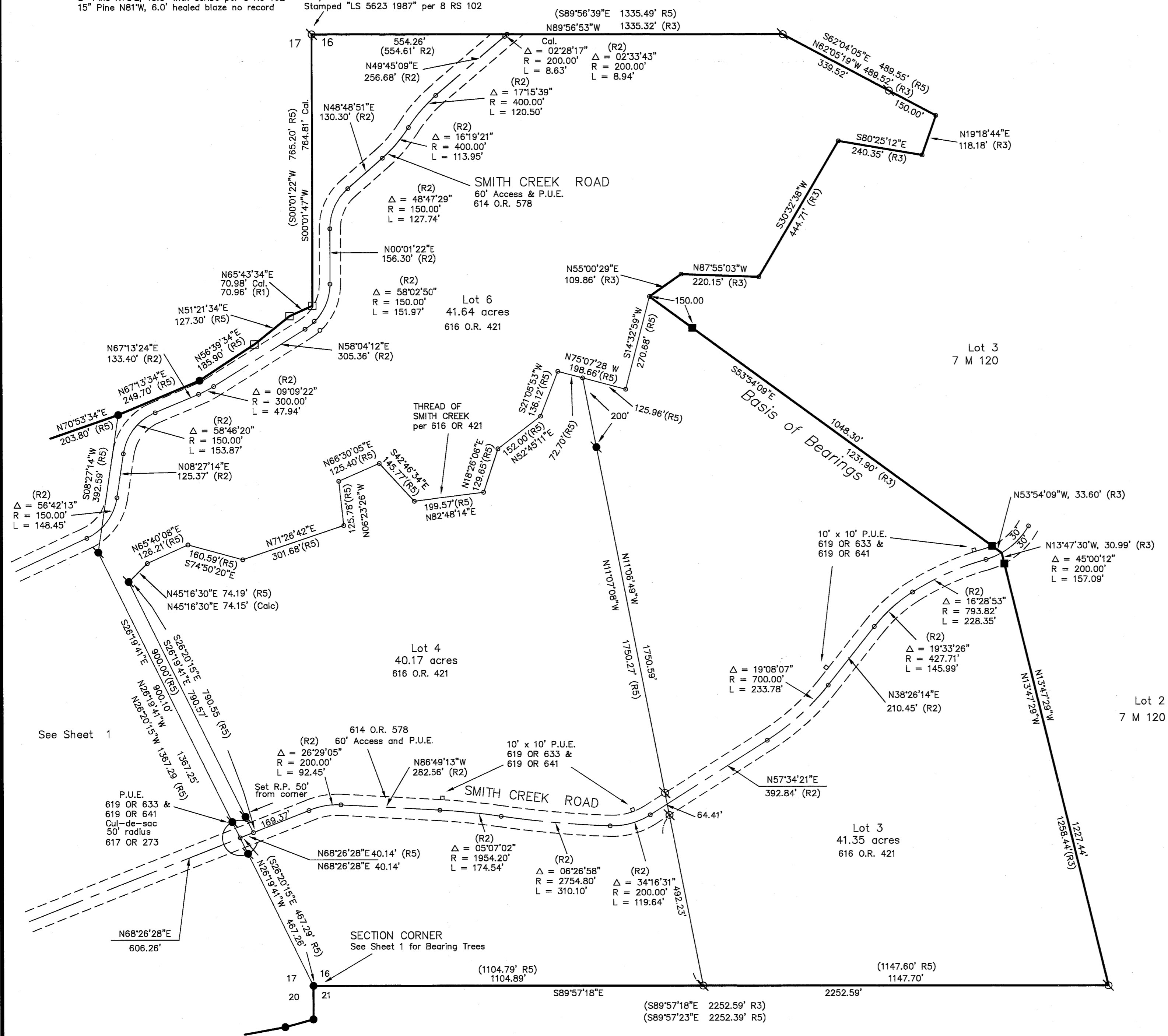


Record Bearing Trees per 7 M 121
14" Pine S38°W, 14.9' Scribe per 8 RS 102
8" Pine N73°E, 15.5' with scribe per 8 RS 102
15" Pine N81°W, 6.0' healed blaze no record

1/4 CORNER

3 1/4" Aluminum U.S.F.S. Monument
Stamped "LS 5623 1987" per 8 RS 102



LEGEND

- ⊗ RECORD corner per 7 M 121
- FOUND Rebar with aluminum cap R.C.E. 13225 per (R3)
- RECORD 1/2" Rebar with Plastic Cap RCE 15265 per (R1)
- FOUND Rebar with Plastic Cap RCE 15265 per (R1)
- FOUND Rebar with Aluminum Cap LS 2843 per (R4)
- ⊙ SET 5/8" Rebar & Aluminum Cap LS 2843
- RECORD CORNER - nothing set.
- (R1) RECORD per 5 RS 28
- (R2) RECORD per 614 O.R. 578
- (R3) RECORD per 7 M 121.
- (R4) RECORD per 10 R.S. 51.
- (R5) RECORD per 616 O.R. 421.
- P.U.E. Public Utility Easement

RECORD OF SURVEY
for
James & Carol Flanagan

A portion of Sections 16, 17, & 20.
T.22 N., R. 12 E., M.D.M.
Plumas County ~ California
Scale 1" = 200' August, 1995

HAMBY SURVEYING INC.
P.O. Box 1209
PORTOLA, CA. 96122
Phone 916-832-5571