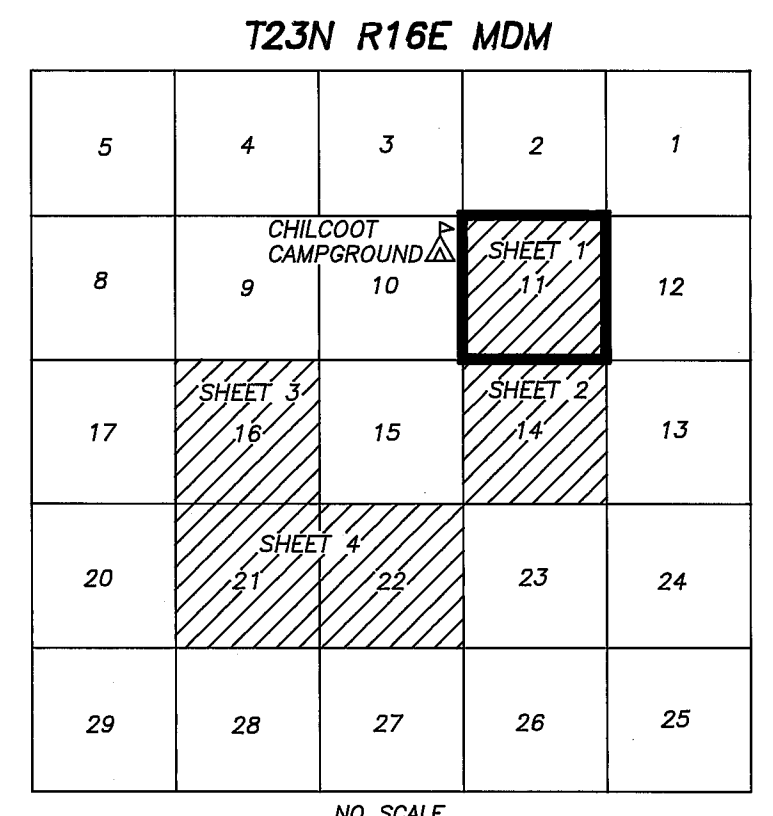
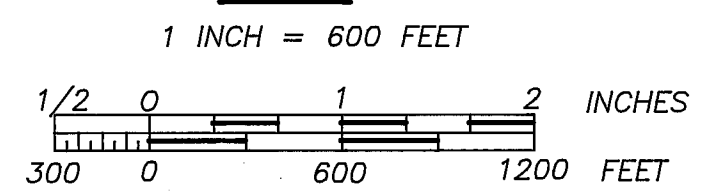


PROJECT LOCATION



SCALE



BASIS OF BEARING

MEASURED BEARINGS AND DISTANCES ARE GRID. THEY ARE BASED ON THE CALIFORNIA COORDINATE SYSTEM OF 1983(CCS83), ZONE 1.

θ AT SE CORNER OF SECTION 21 IS 01°11'18". MULTIPLY GRID DISTANCES BY 1.000209 TO GET GROUND DISTANCES.

CONTROL WAS DONE WITH GPS, TRIMBLE NAVIGATION, 4000 ST, SINGLE FREQUENCY RECEIVERS. CONTROL WAS BROUGHT IN USING THE FOLLOWINGS STATIONS:

"HAWLEY"
 LATITUDE: 39°49'05.39416" N 1821278.349 N
 LONGITUDE: 120°22'29.81585" W 7018148.208 E
 "D 143"
 LATITUDE: 39°48'33.80081 N 1818841.536 N
 LONGITUDE: 120°14'06.57956" W 7057474.307 E
 AS PUBLISHED BY NATIONAL GEODETIC SURVEYS (NGS) IN FEBRUARY 1987.

GENERAL NOTES

A STANDARD UNITED STATES FOREST SERVICE (USFS) DRIVE-IN MONUMENT IS A 5/8" DIAMETER ALUMINUM ROD WITH A 3-1/4" ALUMINUM CAP EMBOSSED WITH THE USFS LOGO.

A STANDARD UNITED STATES FOREST SERVICE (USFS) MONUMENT IS A 3" OUTSIDE DIAMETER ALUMINUM PIPE 30" LONG WITH A 3-1/4" ALUMINUM CAP EMBOSSED WITH THE USFS LOGO.

A STANDARD UNITED STATES FOREST SERVICE (USFS) ROCK CAP IS A 3-1/4" DIAMETER ALUMINUM CAP EMBOSSED WITH THE USFS LOGO WITH A 4" LONG STEM.

ACREAGES ARE CALCULATED USING GROUND DISTANCES.

CALIFORNIA COORDINATE SYSTEM, 1983 (CCS83)

ZONE 1

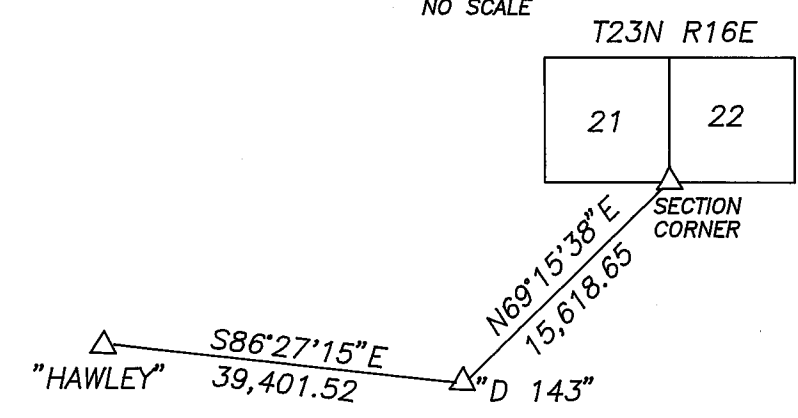
SECTION & QUARTER CORNERS ON THIS SHEET

COR	NORTHING	EASTING	COR	NORTHING	EASTING
1	1840264.695	7077089.979	21	1829710.212	7077298.569
3	1840325.357	7079741.942	26	1837741.768	7082471.690
5	1840386.306	7082393.889	51	1840448.257	7087695.112
8	1837626.173	7077146.809	52	1845549.264	7076958.339
10	1834987.651	7077203.638	53	1840267.321	7074437.359
11	1835064.999	7079843.211	54	1834953.706	7071924.625
12	1835097.229	7082549.491	60	1845681.263	7082297.723

SURVEY HISTORY

R1 E.DYER	AUG 1863	GLO
R2 A.SMITH	JUL 1874	GLO
R3 D.BROWN	AUG 1875	GLO
R4 G.PEARSON	OCT 1912	GLO
R5 J.HAMBY	JUN 1979	5RS50
R6 C.BROWN	SEP 1987	7RS141
R7 J.HAMBY	FEB 1994	10PM103
R8 J.HAMBY	JUN 1994	10RS1

CONTROL SCHEME



LEGEND

- FOUND CORNER
- SET CORNER
- PROPERTY BOUNDARY MARKED AND POSTED
- ORIGINAL GLO CORNER SEARCHED FOR BUT NOT FOUND



SURVEYOR'S STATEMENT

This map correctly represents a survey made by me or under my direction in conformance with the requirements of the Land Surveyors' Act at the request of Plumas National Forest in APRIL 25, 1995.

William Glenn Snow
 William Glenn Snow L.S. 5623
 License Exp. Date 12/31/98

COUNTY SURVEYOR'S STATEMENT

This map has been examined in accordance with Section 8766 of the Land Surveyors' Act this 26 day of APRIL, 1995.

R. Tom Hunter
 R. Tom Hunter R.C.E. 30515
 Plumas County Surveyor
 License Exp. Date 03/31/96

RECORDER'S STATEMENT

Filed this 27 day of APRIL, 1995 at 11:20 a.m. in Book 10 of Records of Surveys, at page 60-67, at the request of the County Surveyor.

Fee: 22.00
 File No: 2391

Judith Wells
 County Recorder
 By: *Lou Pini*
 Deputy

RECORD OF SURVEY

LOCATED IN SECTIONS 11, 14, 16, 21, & 22 T23N R16E MDM PLUMAS COUNTY, CALIFORNIA FOR PLUMAS NATIONAL FOREST PO BOX 11500 QUINCY CALIFORNIA 95971

SURVEY CREW: R.KNOETTGEN J.SCHMIDT D.HOBBS
 M.BEVLEY L.GROSS A.GREEN
 DRAWN BY: S.SASSER & R.KNOETTGEN SHEET 1 OF 8