

Record Bearing Trees per B.L.M.  
 6" Black Oak N27°30'E, 11 lks [N31°E, 12 lks]  
 16" Fir S57°30'E, 55 lks [S56°E, 55 lks]  
 10" Black Oak S72°30'W, 35 lks [S74°W, 36 lks]  
 7" Black Oak stump N48°30'W, 9 lks [N46°W, 10 lks]  
 9" Pine, blazed & scribed, S14°45'W, 9 lks

Bearing Trees  
 24" blazed Pine N67°30'E, 22.5' (N4°W, 298.' R1)  
 12" blazed Pine S23°E, 26.3' (S28°E, 10.0' R1)  
 Remains 25" Oak stump N04°E, 55.6' (N23°W, 72.3' R1)[N02°W, 87.0 lks.]  
 Set Bearing Tree Tag on 11" Fir N17°40'E, 11.5'

Record Bearing Trees per (R1)  
 12" Oak S6°E, 5.8'  
 7" Oak N29°W, 23.0'  
 Found BLM Brass Cap stamped

Found BLM Brass Cap stamped

Set, by single proportion, standard U.S.F.S. Aluminum cap stamped

T24N R10E  
 S6|S5  
 S7|S8  
 1970

BLM Brass Cap stamped RM T24N R10E  
 S7 ← 15.66' bears S30°28'E,  
 15.79' (S29 1/2° W, 23.7 lks. per BLM notes)  
 [N89°54'W 39.98 chs.]  
 (N89°59'46"E 2674.30' R1)

T24N R10E  
 S5  
 1/4 S8  
 LS 2843  
 1995

[N89°54'W 39.98 chs.]  
 (N89°59'46"E 2674.31' R1)

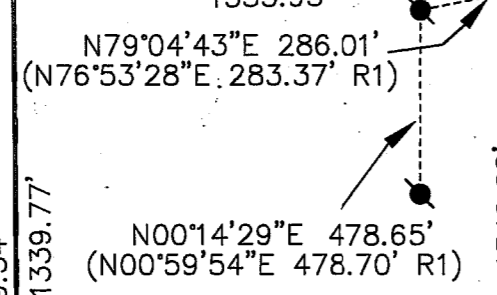
T24N R10E  
 S5|S4  
 S8|S9  
 1971



Set standard U.S.F.S. Alum. cap stamped

T24N R10E  
 W1/16 S5  
 S8  
 LS 2843  
 1995

Set Bearing Tree Tag on 10" Pine N87°16'W, 44.3'



Found standard U.S.F.S. Alum. Cap stamped and scratched T24N R10E 1/4 S5 S8 RCE 22836 which bears S14°47'39"E, 16.39' from set corner

N00°14'29"E 478.65'  
 (N00°59'54"E 478.70' R1)

Bearing Trees per (R1)  
 12" Pine snag with scribing, N89°E, 99 lks  
 18" Pine B.T. S36, 47.2'  
 6" Fir B.T. S52°W, 9.3'

Found Standard U.S.F.S. Aluminum Cap stamped

T24N R10E  
 1/4 S8|S9  
 LS 5287  
 1983

N 00°19'40" W 2681.07'  
 (N 00°27'30" E 2681.40 R1)  
 [NORTH 40.00 chs]

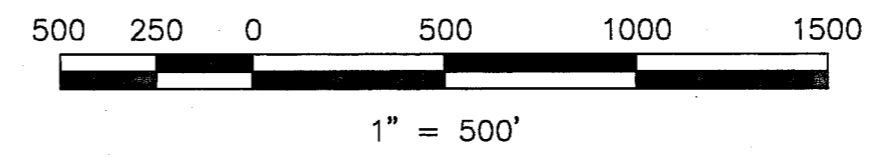
[NORTH 80.00 chs]  
 (N00°01'39"E 5358.63' per 5 RS 147)  
 (N00°19'18"W 5360.30' R1)

5358.06' calculated  
 1339.51'  
 1339.77'  
 1339.77'  
 1339.51'



Calculated West 1/4 corner Section 8 by single proportion

(S89°59'27"E)

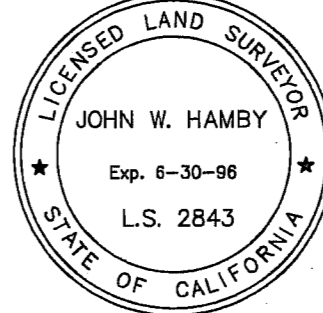


LEGEND

- FOUND point as described
- SET point as described
- FOUND 1/2" rebar for road alignment per (R1)
- Record Corner per 7 RS 121
- (R1) RECORD per 6 RS 111
- (R2) RECORD per 7 RS 121
- [ ] RECORD per G.L.O.

SURVEYOR'S STATEMENT

This map correctly represents a survey made by me or under my direction in conformance with the requirements of the Land Surveyors' Act at the request of Union Pacific Railroad in March, 1995.



*John W Hamby*  
 John W. Hamby LS 2843

COUNTY SURVEYOR'S STATEMENT

This map has been examined in accordance with Section 8766 of the Land Surveyors' Act this 28th day of March, 1995.



*R Tom Hunter*  
 R. Tom Hunter RCE 30515  
 PLUMAS COUNTY SURVEYOR  
 License Expiration Date 3/31/96

RECORDER'S STATEMENT

Filed this 30th day of March, 1995 at 10:41A.m. in Book 10 of Record of Surveys, at page 50, at the request of the County Surveyor.

Fee \$800  
 File No. 1747

Judith Wells  
 County Recorder  
 by *Judith Wells*  
 Deputy

Basis of Bearings

The Basis of Bearings of this survey is the South line of the South East 1/4 of Section 8 shown as S 89°13'45"W, in Book 7 of Record of Surveys at page 121, Plumas County records.

RECORD OF SURVEY for Union Pacific Railroad

A portion of Section 8  
 T. 24 N., R. 10 E., M.D.M.  
 Plumas County ~ California  
 Scale 1" = 500' March, 1995

Hamby Surveying Inc.  
 P.O. Box 1209  
 Portola, CA 96122  
 (916) 832-5571

Record Corner Standard U.S.F.S. Aluminum Cap stamped

Record blazed & scribed Bearing Trees per (R2)  
 9" White Fir N70°28'37"W, 39.41'  
 11" White Fir S65°55'48"W, 26.90'  
 15" Cedar S16°16'36"E, 44.67'  
 17" Douglas Fir N34°37'09"E, 23.91'

T24N R10E  
 S7|S8  
 S18|S17  
 LS 5623  
 1986

S 89°13'34" W 2672.89' (R2)  
 (S89°51'30"W 2672.44' R1)  
 [N89°57'14"W 40.00 chs]

Found Standard U.S.F.S. Aluminum Cap stamped

T24N R10E  
 1/4 S8  
 S17  
 LS 5623  
 1987

There are no bearing trees, corner is in 36" dia. concrete pad with two 1" I.P. guard stakes per (R2)

Found Standard U.S.F.S. Aluminum Cap stamped

T24N R10E  
 S8|S9  
 S17|S16  
 LS 5623  
 1986

Record Bearing Trees per (R2)  
 8" blazed & scribed Black Oak N51°30'W, 18.0'  
 6" blazed & scribed Black Oak N53°30'E, 4.1'  
 6" blazed & scribed Black Oak S38°00'E, 16.3'  
 6" blazed & scribed black Oak S09°30'W, 20.8'