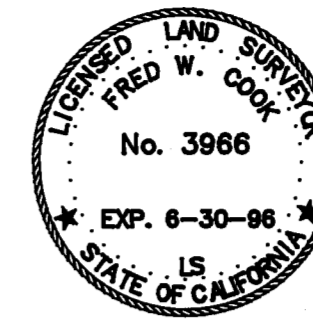


SURVEYOR'S STATEMENT

THIS MAP CORRECTLY REPRESENTS A SURVEY MADE BY ME OR UNDER MY DIRECTION IN CONFORMANCE WITH THE REQUIREMENTS OF THE LAND SURVEYORS' ACT AT THE REQUEST OF LOUISIANA PACIFIC CORP. IN OCTOBER, 1994

SIGNED *Fred W. Cook*
FRED W. COOK, L.S. 3966



COUNTY SURVEYOR'S STATEMENT

THIS MAP HAS BEEN EXAMINED IN ACCORDANCE WITH SECTION 8766 OF THE LAND SURVEYORS' ACT THIS 23 DAY OF March, 1995

SIGNED *R. Tom Hunter*
PLUMAS COUNTY SURVEYOR
R. TOM HUNTER, R.C.E. 30515
REG. EXP. 3/31/96



COUNTY RECORDER'S STATEMENT

FILED THIS 23rd DAY OF March, 1995, AT 2:10 P.M. IN BOOK 10 OF RECORD OF SURVEYS AT PAGE 474B, AT THE REQUEST OF THE PLUMAS COUNTY SURVEYOR.

PLUMAS COUNTY RECORDER
JUDITH WELLS

BY *Johann Van Melder*
DEPUTY

FEE \$10.00 #1626

RECORD OF SURVEY

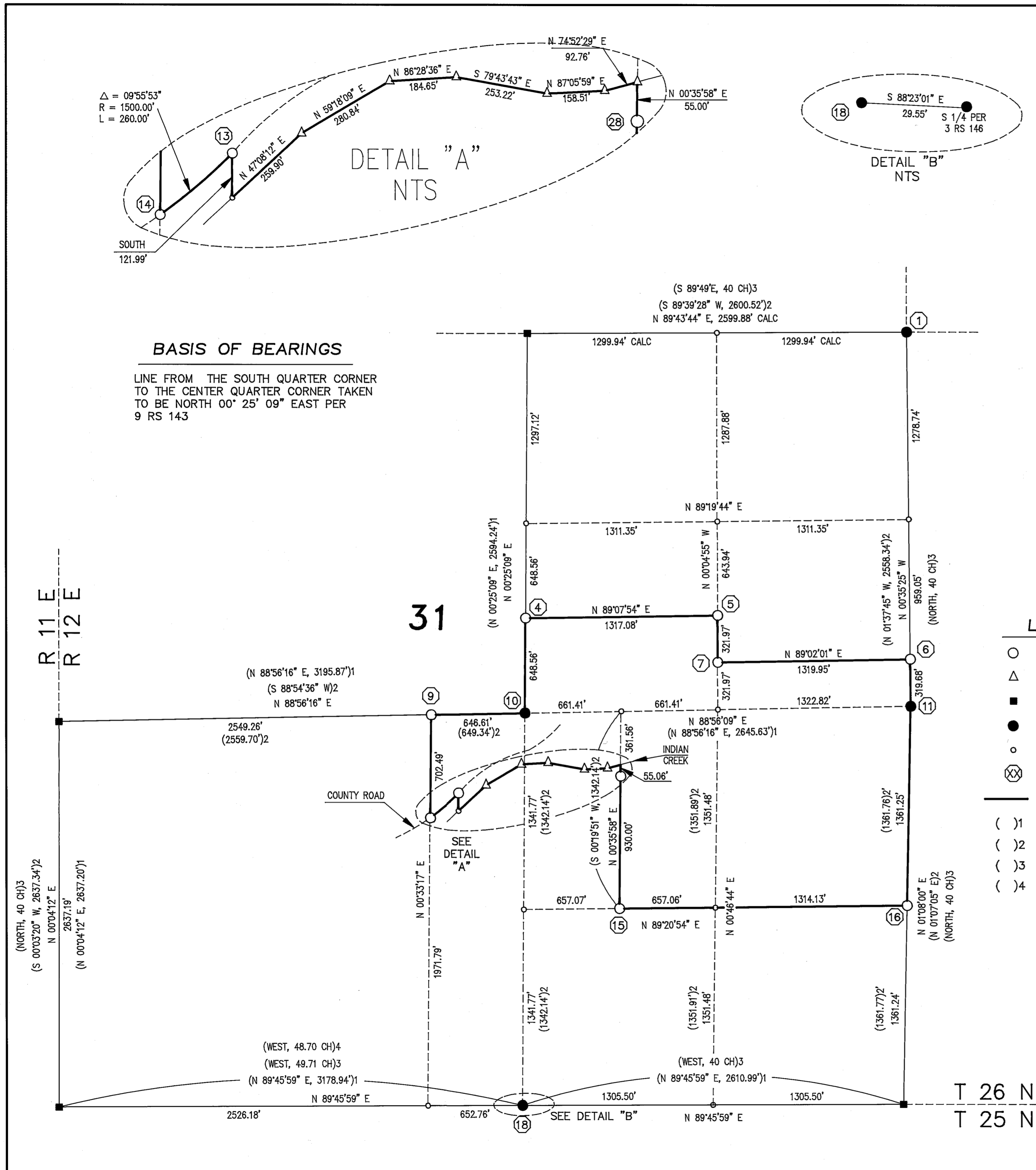
FOR
LOUISIANA PACIFIC CORP.

"GENESEE"
IN SECTION 31,
T26N R12E MDM
IN THE
UNINCORPORATED AREA OF PLUMAS COUNTY,
STATE OF CALIFORNIA

DEL TERRA INC.
P.O. BOX 4632
REDDING, CA 96099
PHONE (916) 241-8050

SCALE: 1" = 500' OCTOBER, 1994
SHEET: 1 OF 2

GENESEE 9/17/11



BASIS OF BEARINGS

LINE FROM THE SOUTH QUARTER CORNER TO THE CENTER QUARTER CORNER TAKEN TO BE NORTH 00° 25' 09" EAST PER 9 RS 143

LEGEND

- SET MONUMENT - SEE CORNER NOTES FOR DESCRIPTION
- △ CL CREEK POINT DIGITIZED FROM A.P. MAP
- RECORD POSITION PER 9 RS 143
- FOUND CORNER - SEE CORNER NOTES FOR DESCRIPTION
- CALCULATED POINT - NOTHING FOUND OR SET
- ⊗ CORNER NUMBER
- PROPERTY LINES
- () 1 RECORD PER 9 RS 143
- () 2 RECORD PER 3 RS 146
- () 3 RECORD PER GLO 1878
- () 4 RECORD PER GLO 1881