

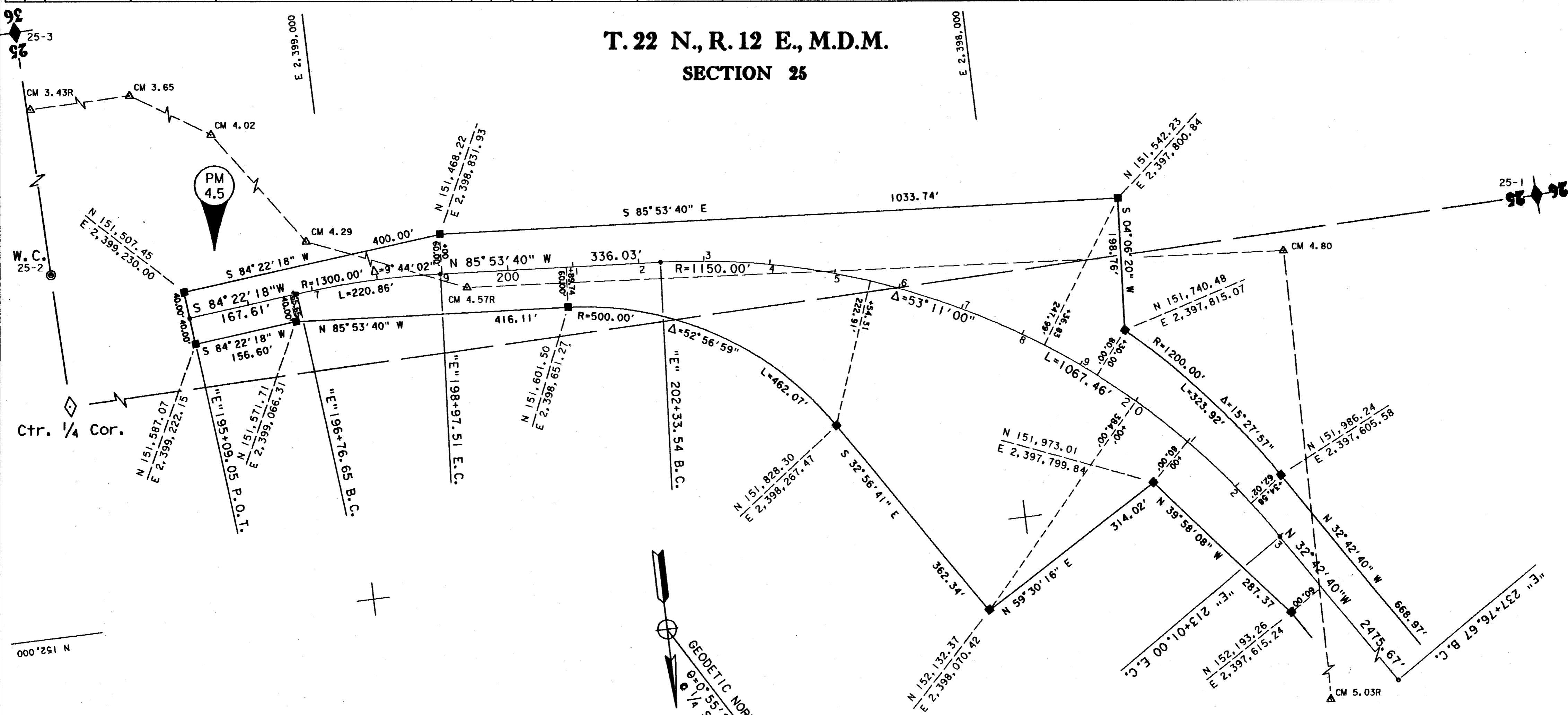
FOUND POINTS

LEGEND

SEC	PT	COORDINATES		DESCRIPTION	RECORDED			SEC	PT	COORDINATES		DESCRIPTION	RECORDED		
		NORTH	EAST		BK	OF	PG			NORTH	EAST		BK	OF	PG
25	2	151,464.35	2,399,854.58	2" IDIP W.C. TO C. 1/4 COR. SEC. 25	3	R/S	123	--	--	151,651.95	2,397,560.24	CM 4.80	--	--	--
25	3	149,009.53	2,399,913.38	1/2" REBAR W/PLASTIC CAP (UNREADABLE) AT FENCE COR. (0.2 ft above grnd.)	3	R/S	123	--	--	152,976.35	2,397,580.55	CM 5.03R	--	--	--
--	--	149,015.40	2,403,384.99	CM 3.43R	--	--	--	--	--	--	--	--	--	--	--
--	--	148,999.11	2,402,275.59	CM 3.65	--	--	--	--	--	--	--	--	--	--	--
--	--	149,899.65	2,400,859.74	CM 4.02	--	--	--	--	--	--	--	--	--	--	--
--	--	151,020.55	2,400,074.67	CM 4.29	--	--	--	--	--	--	--	--	--	--	--
--	--	151,553.06	2,398,800.69	CM 4.57R	--	--	--	--	--	--	--	--	--	--	--

- △ CALTRANS CONTROL LINE MONUMENT
 - FOUND R/W MONUMENT
 - SET 3/4" REBAR W/ALUM. CAP STAMPED "CALTRANS"
 - NO MONUMENT SET
 - PROP. MON. FOUND AS NOTED AND REMOVED
 - ◆ SECTION OR FRACTIONAL CORNER FOUND AS NOTED.
 - ◇ SECTION OR FRACTIONAL CORNER NOT LOCATED.
 - ▲ U.S.C. & G.S. TRIANGULATION STATION
 - △ CALTRANS HORIZONTAL CONTROL STATION
- 36-9 SECTION-POINT No.

T. 22 N., R. 12 E., M.D.M.
SECTION 25



EXCEPTING THOSE SHOWN OTHERWISE, ALL DISTANCES AND BEARINGS ARE GRID, BASED ON THE CALIFORNIA COORDINATE SYSTEM OF 1927, ZONE 1. TO OBTAIN GROUND LEVEL DISTANCES, MULTIPLY GRID DISTANCES BY 1.00013592.

GRID WAS ESTABLISHED FROM U.S.C. & G.S. TRIANGULATION STATIONS:

RIVER	N 176,111.06	&	GRAVEL	N 163,441.12
1949 1970	E 2,378,623.21		1949	E 2,398,262.74
MILL	N 136,978.34			
1949	E 2,389,343.83			

SUPPLEMENTARY INFORMATION MAY BE OBTAINED FROM THE DISTRICT SURVEY DEPARTMENT OR RIGHT OF WAY ENGINEERING DEPARTMENT, 2250 BENTON DR., REDDING, CALIFORNIA

STATE OF CALIFORNIA
BUSINESS, TRANSPORTATION, AND HOUSING AGENCY
DEPARTMENT OF TRANSPORTATION
DISTRICT 02
**RECORD OF SURVEY
OF MONUMENTATION**
IN PLUMAS COUNTY
ALONG STATE HIGHWAY ROUTE 89
P.M. 4.5 TO P.M. 5.6
SHEET 2 OF 4

