

Basis of Bearings

The Basis of Bearings of this map is South line of the Southwest 1/4 of Section 27 shown as S 89°33'08" E in Book 9 of Record of Surveys at page 34 Plumas County Records.

Note:

1. The points shown which were set during (R1) have since been replaced with the Standard U.S.F.S. Aluminum Cap stamped as shown.

Found B & S Bearing Trees
10" Pine S25°40'W, 6.1'
12" Pine N9°W, 35.5'

Found B & S Bearing Trees
7" Pine S46°E, 6.9'
25" Pine N28°15'E, 37.8'

Found B & S Bearing Tree
21" Pine S27°10'W, 26.3'

Found B & S Bearing Trees
6" Pine S40°E, 9.1'
7" Pine S58°W, 15.2'

Found B & S Bearing Trees
10" Pine S83°E, 4.1'
15" Pine N26°30'E, 35.1'

no accessories
1/4 Corner Stamped
T23N R16E
S22|S23
LS 5623
1993

no accessories
1/4 Corner Stamped
T23N R16E
S21|S22
LS 5623
1993

Section Corner Found scribed post in mound of rock & 1/2" rebar with Aluminum Cap stamped T23N R16E

(NORTH 40.00 chs. G.L.O.)
N00°29'23"E 2603.80'

(NORTH 40.00 chs. G.L.O.)
N00°29'23"E 2603.80'

K-tag on Power Pole
N71°26'W, 64.5' from corner
1/4 Corner Stamped
T23N R16E
S22|S27
LS 5623
1993

(NORTH 80.00 chs. G.L.O.)
N00°36'44"W 5293.27' (R3)
N00°28'30"E 5293.61' (R2)
N00°30'25"E 5293.21'

(NORTH 40.00 chs. G.L.O.)
N00°27'29"E 2643.12' (R1)
N00°27'29"E 2643.12' (R1)

(NORTH 40.00 chs. G.L.O.)
N00°27'29"E 2643.12' (R1)
N00°27'29"E 2643.12' (R1)

(NORTH 40.00 chs. G.L.O.)
N00°27'29"E 2643.12' (R1)
N00°27'29"E 2643.12' (R1)

(NORTH 40.00 chs. G.L.O.)
N00°27'29"E 2643.12' (R1)
N00°27'29"E 2643.12' (R1)

See Detail "A"
S89°41'13"E 2648.69'
(S89°45'13"E 2648.17' R2)
(WEST 40.10 chs. G.L.O.)

See Detail "A"
S89°24'14"E 2688.71'
(WEST 40.10 chs. G.L.O.)

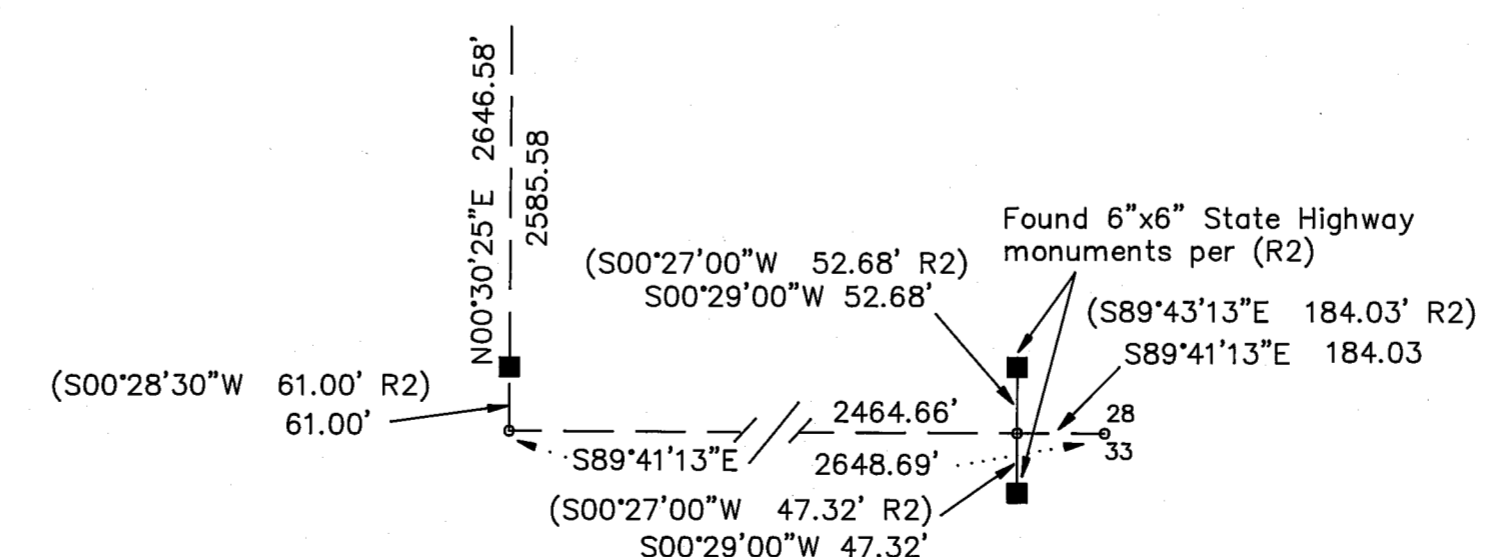
Section Corner
Found 5/8" rebar with Aluminum Cap LS 2843 per 9 RS 34
no accessories

S 1/4 Corner Section 28
Found 5/8" rebar with Aluminum Cap LS 2843 per 9 RS 34
no accessories

Found 1/2" rebar with Aluminum Cap per (R2)

LEGEND

- FOUND point as described
- FOUND STD. U.S.F.S. Aluminum Cap stamped as shown
- FOUND 5/8" Rebar with Aluminum Cap LS 2843 per (R1)
- SET 5/8" Rebar with Aluminum Cap LS 2843
- Computed point
- (R1) RECORD & MEASURED per 10 PM 100
- (R2) RECORD per 5 RS 50
- (R3) RECORD per 6 RS 114
- B & S Blazed & Scribed



DETAIL "A"

SURVEYOR'S STATEMENT

This map correctly represents a survey made by me or under my direction in conformance with the requirements of the Land Surveyors' Act at the request of Alex G. Gassiot in December, 1993.



John W. Hamby
John W. Hamby LS 2843

COUNTY SURVEYOR'S STATEMENT

This map has been examined in accordance with Section 8766 of the Land Surveyors' Act this 19th day of April, 1994

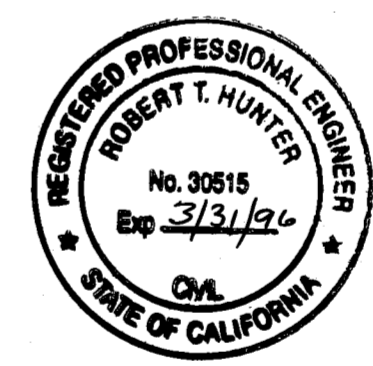
R. Tom Hunter
R. Tom Hunter RCE 30515
PLUMAS COUNTY SURVEYOR
License Expiration Date 3/31/96

RECORDER'S STATEMENT

Filed this 17 day of June, 1994 at 3:10 P.M. in Book 10 of Record of Surveys, at page 1, at the request of the County Surveyor.

Fee \$800
File No. 4467
Judith Wells
County Recorder
by *Jillias d. Payne*
Deputy

NOTE:
This Record of Survey was prepared to reflect a Lot Line Adjustment for which a resolution is Recorded in Book 632 of Official Records at page 258.



RECORD OF SURVEY for Alex G. Gassiot

A portion of Sections 22, 27 & 28,
T. 23 N., R. 16 E., M.D.M.
Plumas County ~ California
Scale 1" = 1000' December, 1993

HAMBY SURVEYING INC.
P.O. Box 1209
PORTOLA, CA. 96122
Phone 916-832-5571