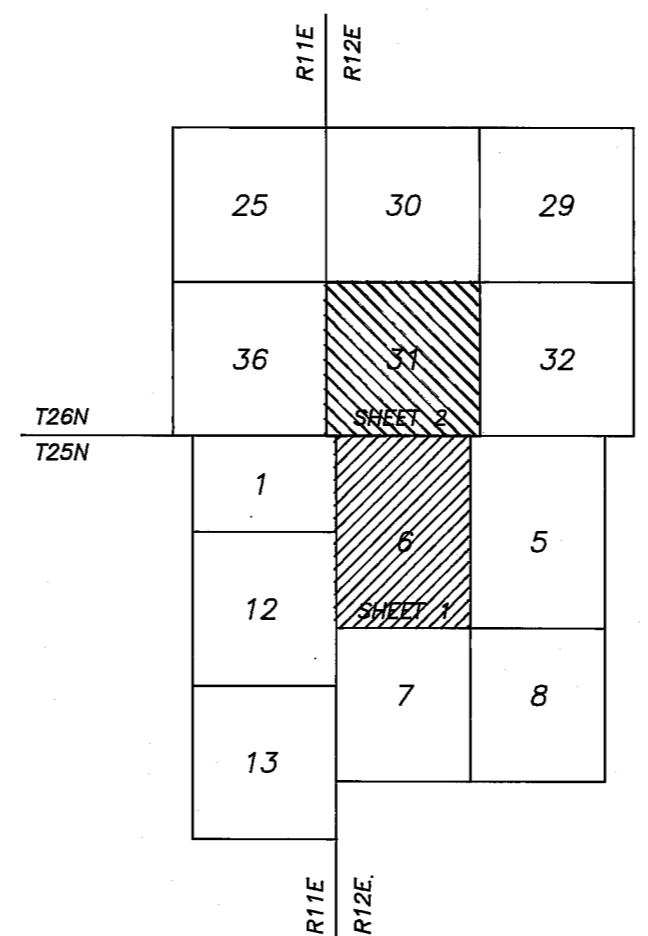
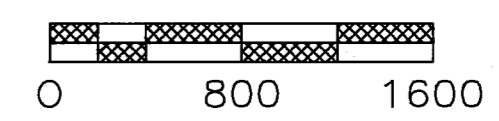


PROJECT LOCATION MAP
NO SCALE



SCALE: 1" = 800'



BASIS OF BEARING

THE BASIS OF BEARING IS A SOLAR OBSERVATION TAKEN AT THE S1/4 CORNER OF SECTION 31.

NOTES

A STANDARD UNITED STATES FOREST SERVICE (USFS) DRIVE-IN MONUMENT IS A 5/8" DIAMETER ALUMINUM ROD WITH A 3-1/4" ALUMINUM CAP EMBOSSED WITH THE USFS LOGO.

A STANDARD USFS MONUMENT IS A 2-1/2" OUTSIDE DIAMETER ALUMINUM PIPE WITH A 3-1/4" DIAMETER ALUMINUM CAP EMBOSSED WITH THE USFS LOGO.

SURVEY HISTORY

SECTION 6 AND 31					
R1	JUL 1873	A.SMITH	GLO		
R2	JUN 1877	R.WILSON	GLO		
R3	SEP 1878	J.BRANHAM	GLO		
R4	DEC 1880	W.MINTO	GLO		
R5	JAN 1881	W.MINTO	GLO		
R6	MAY 1971	E.RINGLE	RCE 11128	3RS146	
R7	JUL 1974	E.RINGLE	RCE 11128	4PM93	
R8	OCT 1974	E.RINGLE	RCE 11128	4M51-53	
R9	APR 1976	G.HENDERSON	LS 3297	5PM76	
R10	MAR 1978	T.WULFERT	LS 4342	5RS7	
R11	APR 1982	C.BROWN	RCE 22836	5M58-61	
R12	DEC 1986	C.BROWN	RCE 22836	6M22-23	

LEGEND

- FOUND CORNER
- SET CORNER
- PROPERTY BOUNDARY MARKED AND POSTED
- CORNER NOT COMMON TO ADJOINING SECTION



SURVEYOR'S STATEMENT

This map correctly represents a survey made by me or under my direction in conformance with the requirements of the Land Surveyors' Act at the request of Plumas National Forest in FEB. 15, 1994.
William G. Snow
William Glenn Snow L.S. 5623
License Exp. Date 12/31/94

COUNTY SURVEYOR'S STATEMENT

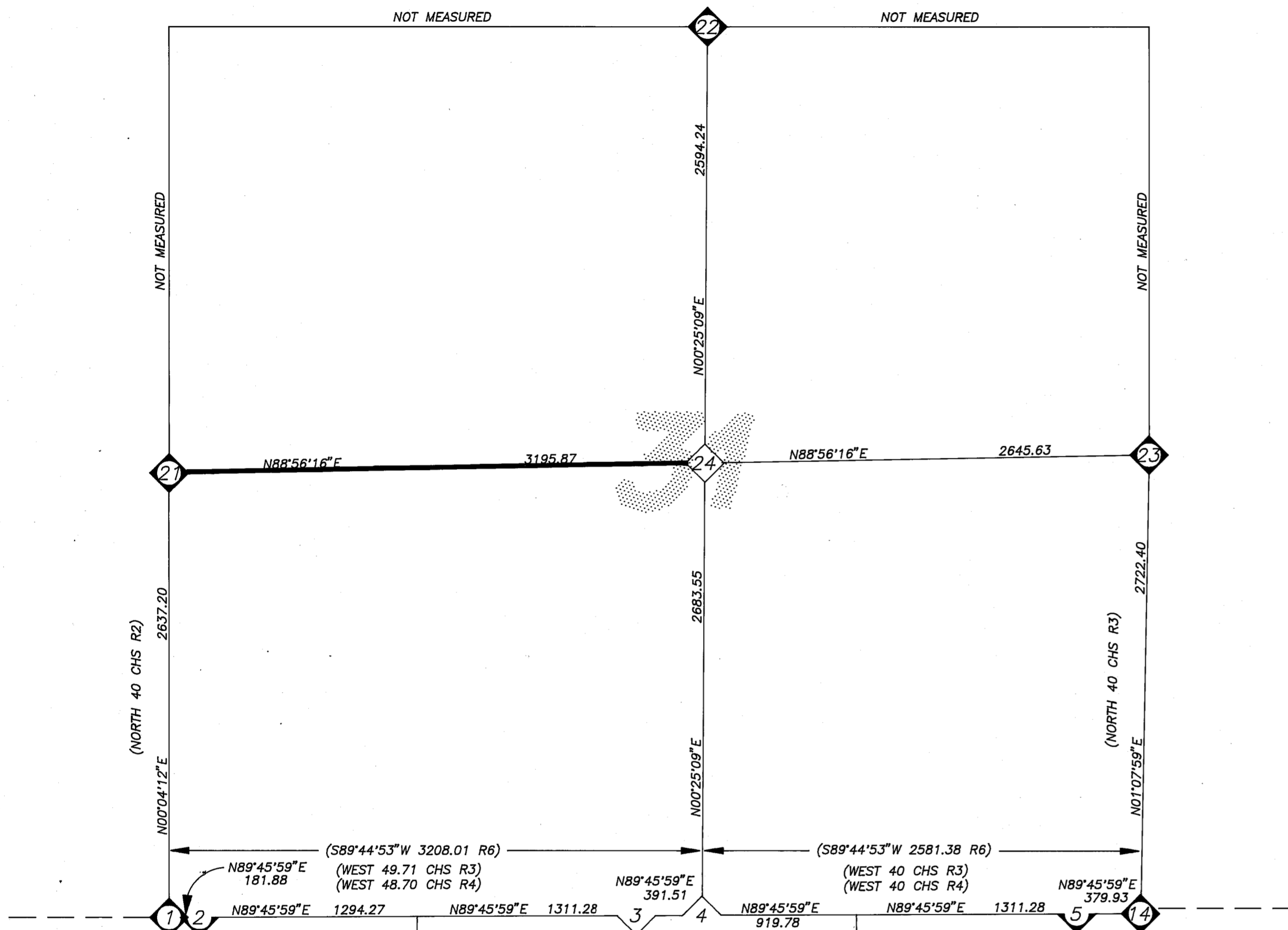
This map has been examined in accordance with Section 8766 of the Land Surveyors' Act this 10TH day of March, 1994.
R. Tom Hunter
R. Tom Hunter R.C.E. 30515
Plumas County Surveyor
License Exp. Date 03/31/96

RECORDER'S STATEMENT

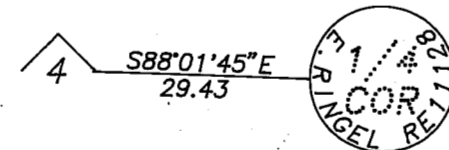
Filed this 14TH day of March, 1994 at 11:10 A.m. in Book 9 of Records of Surveys, at page 143-144, at the request of the County Surveyor.
Fee: \$14
File No: 1989
Judith Wells
County Recorder
J. A. Reay
Deputy

RECORD OF SURVEY

LOCATED IN SECTION 6 T25N R12E AND SECTION 31 T26N R12E MDM COUNTY OF PLUMAS, STATE OF CALIFORNIA FOR THE PLUMAS NATIONAL FOREST. P.O. BOX 11500 QUINCY, CA. 95971.
SURVEY CREW: R.Knoettgen, H.Stokes, J.Schmidt, D.Hobbs, B.Willard
DRAWN BY: S.Sasser
SHEET: 1 OF 4

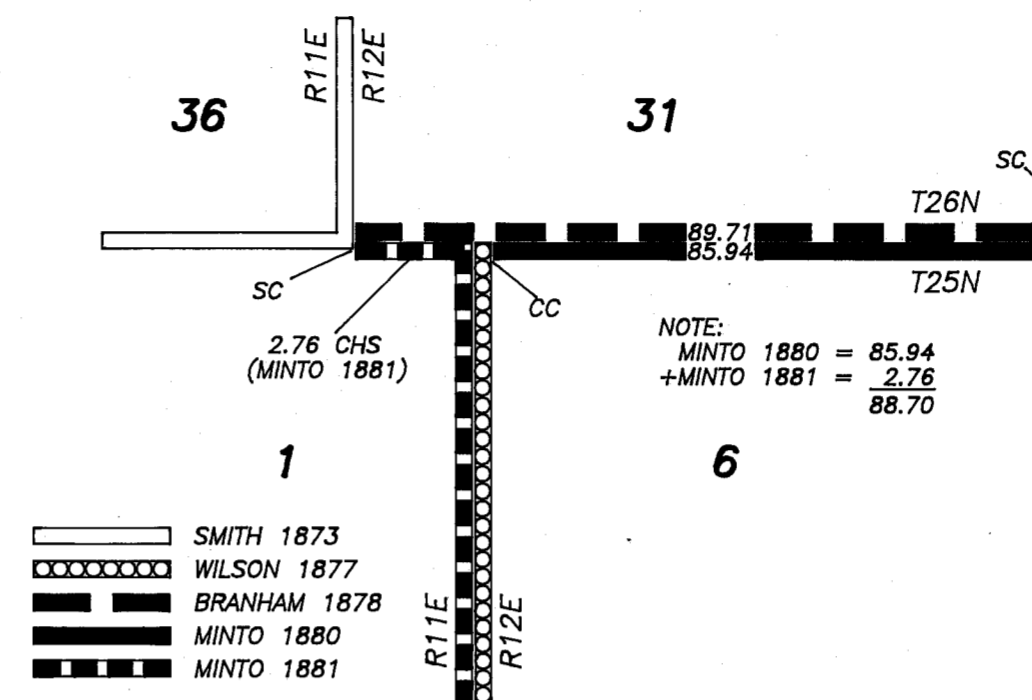


DETAIL "D"
NO SCALE

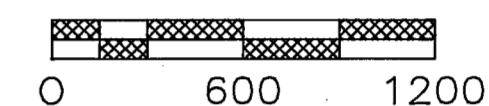


NOTE:
E.RINGEL S1/4 COR S31 NOT ACCEPTED
AS TRUE CORNER LOCATION PER
BLM LETTER, SEE SHEET 4.

GLO DIAGRAM
NO SCALE



SCALE: 1" = 600'



BASIS OF BEARING

THE BASIS OF BEARING IS A SOLAR OBSERVATION
TAKEN AT THE S1/4 CORNER OF SECTION 31.

SURVEY HISTORY

SECTION 6 AND 31				
R1	JUL 1873	A.SMITH	GLO	
R2	JUN 1877	R.WILSON	GLO	
R3	SEP 1878	J.BRANHAM	GLO	
R4	DEC 1880	W.MINTO	GLO	
R5	JAN 1881	W.MINTO	GLO	
R6	MAY 1971	E.RINGLE	RCE 11128	3RS146
R7	JUL 1974	E.RINGLE	RCE 11128	4PM93
R8	OCT 1974	E.RINGLE	RCE 11128	4M51-53
R9	APR 1976	G.HENDERSON	LS 3297	5PM76
R10	MAR 1978	T.WULFERT	LS 4342	5RS7
R11	APR 1982	C.BROWN	RCE 22836	5M58-61
R12	DEC 1986	C.BROWN	RCE 22836	6M22-23

LEGEND

- FOUND CORNER
- SET CORNER
- PROPERTY BOUNDARY MARKED AND POSTED
- CORNER NOT COMMON TO ADJOINING SECTION

RECORD OF SURVEY

LOCATED IN SECTION 6 T25N R12E AND SECTION 31 T26N R12E MDM COUNTY OF PLUMAS, STATE OF CALIFORNIA FOR THE PLUMAS NATIONAL FOREST. P.O. BOX 11500 QUINCY, CA. 95971.

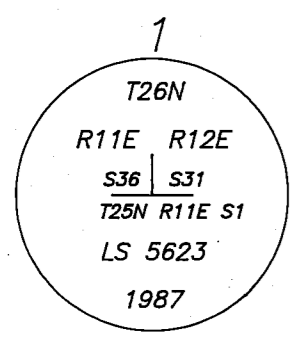
SURVEY CREW
R.Knoettgen
J.Schmidt
B.Willard

H.Stokes
D.Hobbs

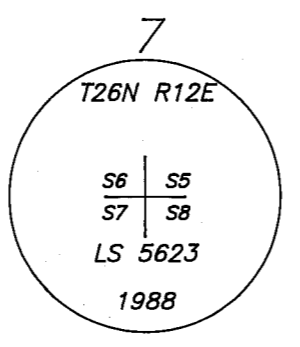
DRAWN BY

S.Sasser

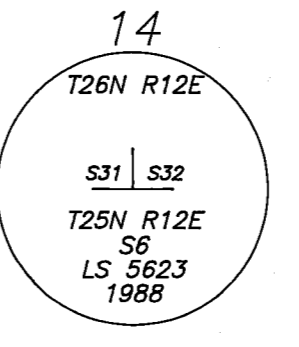
SHEET: 2 OF 4



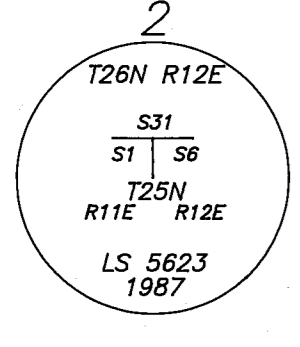
1
RECORD: POST IN STONE MOUND 24 INCHES HIGH FROM WHICH BEARS A BLACK OAK 10 INCHES IN DIAMETER N60°W 90 LINKS DIST. PITCH PINE 25 INCHES IN DIAMETER S53°W 46 LINKS DIST. CEDAR 16 INCHES IN DIAMETER S15-1/2°E 58 LINKS DIST.
FOUND: 1-1/4" OD IP NO TAG 18" AG NO MOS (3RS146)
FWB: 16" BO N54°30'W 59.7 FT (90 LKS) CLOSED FACE (ASSUMED GLO) 31" PP S54°55'W 27.3 FT (41 LKS) CLOSED FACE (ASSUMED GLO) 22" IC S18°26'E 37.3 FT (57 LKS) CLOSED FACE (ASSUMED GLO)
SET: REPLACED FOUND MON W/STD USFS MON 8" AG IN A 24"x24"x8" MOS BURIED FOUND MON ALONGSIDE



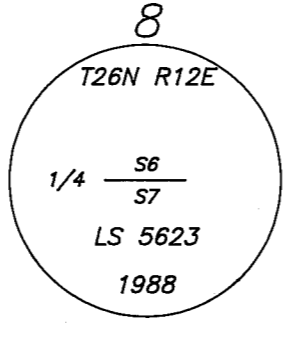
7
RECORD: GRANITE STONE 12X8X6 INS FOR CORNER TO SECTIONS 5,6,7 AND 8
FWB: YELLOW PINE 10 INS DIA N12°E 60 LKS DIST BLACK OAK 13 INS DIA N80°W 75 LKS DIST YELLOW PINE 6 INS DIA S38°E 45 LKS DIST YELLOW PINE 13 INS DIA S42°W 66 LKS DIST
FOUND: SCATTERED MOS
FWB: 19" PP N12°31'E 37.2 FT. (56 LKS) (ASSUMED GLO) 28" PP S39°16'W 46.8 FT. (71 LKS) SCRIBING VISIBLE (GLO)
SET: STD USFS MON 12" AG IN CENTER OF FOUND MOS IN A 36"x36"x6" MOS
FWB: 11" DF N81°20'W 24.7 FT SCRIBED "T25NR12ES6BT" 7" IC S70°38'E 38.8 FT SCRIBED "T25NR12ES8BT"



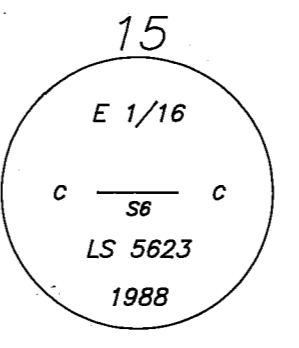
14
RECORD: GRANITE STONE 15X10X7 IN.
FWB: YELLOW PINE 26 IN DIA N12°W 58 LKS DIST. YELLOW PINE 30 IN DIA N70°E 62 LKS DIST.
FOUND: A 16"x11"x5" GRANITE ROCK W/5 OR 6 NOTCHES (GLO)
FWB: 24" PP STUMP N12°57'W 37.5 FT (57 LKS ASSUMED GLO) 40" PP STUMP N70°48'E 43.4 FT (66 LKS ASSUMED GLO)
SET: STD USFS ROCK TABLET WHICH IS A 3-1/2" DIA ALUMINUM CAP W/ A 4" STEM MORTARED INTO 5'X6'X6" BOULDER
FWB: 7" BO N43°30'W 15.7 FT SCRIBED "T26NR12ES31SCBT" 17" SP N30°00'E 38.8 FT SCRIBED "T26NR12ES32SCBT"



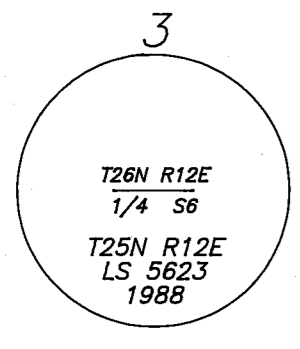
2
RECORD: POST 48X5X5 INCHES IN STONE MOUND 24 INCHES HIGH FROM WHICH BEARS PITCH PINE 22 INCHES DIAMETER S54°E 23 LINKS DIST. PITCH PINE 30 INCHES DIAMETER S57°W 6 LINKS DIST.
FOUND: 1-1/4" OD IP NO TAG 4" AG NO MOS (ASSUMED 5PM76)
FWB: 27" PP S52°41'E 17.0 FT (26 LKS) SCRIBING VISIBLE (GLO) STUMP HOLE S49°W 4.7 FT (7 LKS) W/30" LOG ALONGSIDE (ASSUMED GLO)
SET: REPLACED FOUND MON W/STD USFS DRIVE-IN MON 8" AG IN A 36"x30"x7" MOS STAMPED "AM" ON CAP BURIED FOUND MON ALONGSIDE
ALSO SET: STD USFS MON AT THE TRUE POINT OF INTERSECTION (SEE DETAIL "A")
FWB: 8" DF S42°23'W 14.2 FT SCRIBED "T25NR11ES1CCBT"



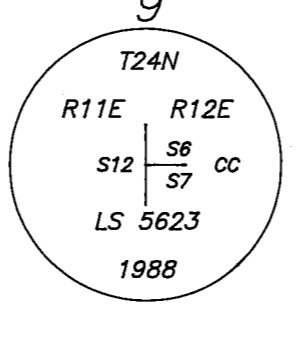
8
RECORD: GRANITE STONE 18X12X8 INS., FOR QUARTER SECTION CORNER
FWB: YELLOW PINE 8 INS DIA N78°E 40 LKS DIST CEDAR 6 INS DIA S18°E 55 LKS DIST
FOUND: NOTHING
SET: STD USFS DRIVE-IN MON 12" AG IN A 24"x24"x10" MOS
FWB: 6" IC N38°32'E 6.9 FT SCRIBED "1/4S6BT" 9" WF S28°43'E 23.1 FT SCRIBED "1/4S7BT"



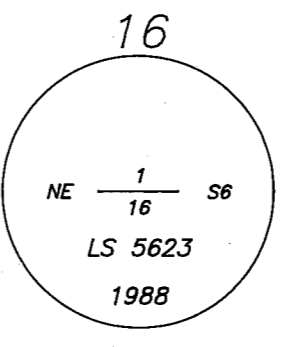
15
RECORD: NOTHING SET
FOUND: NOTHING AT CORNER LOCATION
SET: STD USFS DRIVE-IN MON W/36" OF ROD 3" AG IN A 18"x18"x3" MOS
FWB: 11" DF N34°24'E 6.4 FT SCRIBED "CE1/16S6BT" 8" DF N71°51'W 8.0 FT SCRIBED "CE1/16S6BT"



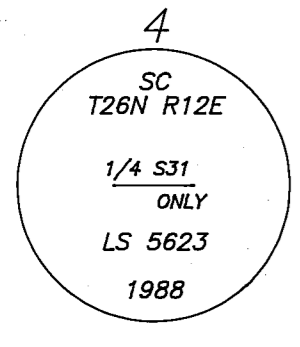
3
RECORD: NOTHING SET
FOUND: NOTHING AT CALCULATED CORNER POSITION WITHIN TOLERABLE LIMITS
FWB: 3/4" REBAR W/PLASTIC CAP RCE 22836 1" AG S74°39'17"W 3.60 FT (NO RECORD) DID NOT ACCEPT AS N1/4 S6
SET: STD USFS MON 2" BELOW GROUND (LAND OWNER'S REQUEST)
FWB: STD USFS DRIVE-IN MON W/48" OF ROD S16°09'34"E 38.56 FT (REFERENCE MONUMENT)



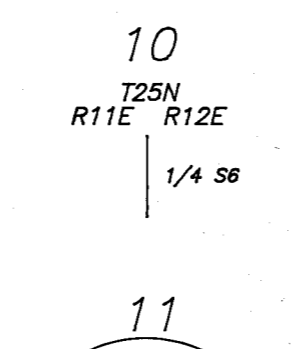
9
RECORD: GRANITE STONE, 20X10X8 INS., FOR CLOSING CORNER TO SECTIONS 6 & 7
FWB: CEDAR 23 INS. DIA. N7° E. 6 LKS. DIST. BLACK OAK 5 INS. DIA. S30° W. 29 LKS. DIST.
FOUND: 3/4" OD IP W/METAL TAG LS3297 (5PM76) 24" AG IN 24"x24"x18" MOS
FWB: 28" IC N09°38'E 4.6 FT (9LKS) SCRIBING VISIBLE (GLO)
SET: REPLACED FOUND MON W/STD USFS DRIVE-IN MON W/48" OF ROD 8" AG IN A 24"x24"x8" MOS STAMPED AM ON CAP BURIED FOUND MON ALONGSIDE
ALSO SET: STD USFS DRIVE-IN MON W/48" OF ROD 7" AG IN A 24"x24"x6" MOS AT TRUE POINT OF INTERSECTION (SEE DETAIL "C")
FWB: 5" DF N62°15'E 6.6 FT SCRIBED "XCCBT"



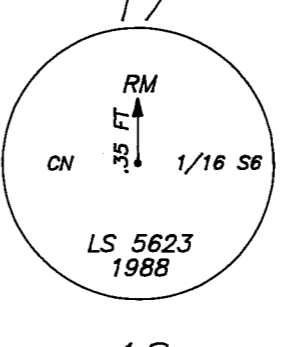
16
RECORD: NOTHING SET
FOUND: NOTHING AT CALCULATED CORNER POSITION WITHIN TOLERABLE LIMITS
FWB: 5/8" REBAR TAGGED RCE 22836 (NO RECORD) N88°30'W 2.6 FT (DID NOT ACCEPT AS 1/16 COR)
SET: STD USFS DRIVE-IN MON W/12" OF ROD 2" AG
FWB: 10" PP S61°41'W 23.9 FT. 16" DF S03°10'W 16.5 FT.



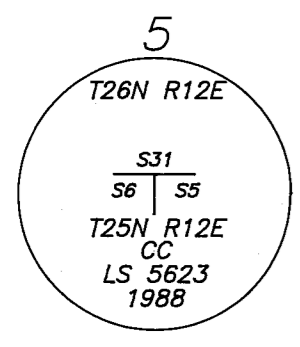
4
RECORD: POST IN STONE MOUND
FWB: COTTONWOOD 12 IN DIA N10°W 54 LKS DIST COTTONWOOD 7 IN DIA S55-1/2°W 70 LKS DIST
FOUND: NOTHING AT CORNER LOCATION
FWB: 1-1/4" OD IP W/ALUM DISK (RCE11128) 6" AG IN A 18" DIA MOS S88°01'45"E 29.43 FT (3M146) DID NOT ACCEPT AS S 1/4 S31 PER BLM INSTRUCTIONS, SEE SHEET 4 OF 4
SET: STD USFS MON 8" AG IN A 30"x30"x6" MOS
FWB: 22" BO N04°18'E 108.7 FT SCRIBED "1/4S31BT" 34" PP N88°46'E 225.3 FT SCRIBED "1/4S31BT"



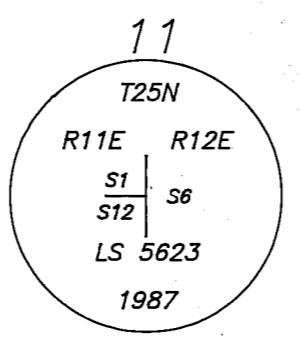
10
RECORD: NOTHING SET
FOUND: NOTHING
SET: NOTHING SET CALCULATED POINT ONLY



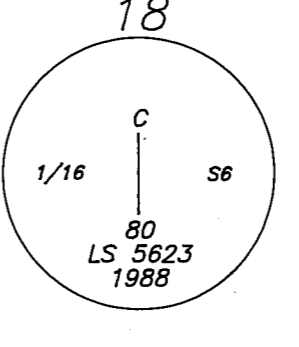
17
RECORD: NOTHING SET
FOUND: NOTHING
SET: NOTHING AT CORNER LOCATION (6'X4'X4' BOULDER IN THE WAY)
FWB: 6" DF N11°33'E 8.1 FT 5" IC N60°37'W 6.2 FT STD USFS DRIVE-IN MON W/24" OF ROD 8" AG S24°26'W 0.35 FT (REFERENCE MONUMENT)



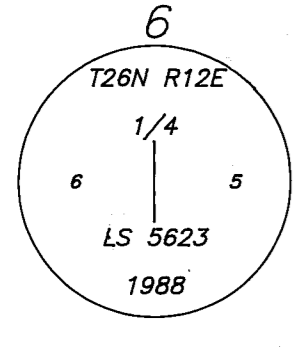
5
RECORD: GRANITE STONE, 20X14X3 INS., FOR CLOSING CORNER TO SECTIONS 5 AND, 6
FWB: YELLOW PINE 8 INS DIA N80-1/2°E 31 LKS DIST BLACK OAK 12 INS DIA S29°E 45 LKS DIST BLACK OAK 6 INS DIA S64°W 52 LKS DIST
FOUND: 3/4" OD IP W/METAL TAG LS3297 8" AG (5PM76)
FWB: 16" BO STUMP S26°06'E 27.7 FT(42 LKS) NO SCRIBING (ASSUMED GLO) 26" BO STUMP S66°36'W 36.5 FT(55 LKS) NO SCRIBING (ASSUMED GLO)
SET: REPLACED FOUND MON W/STD USFS MON STAMPED "AM" ON CAP BURIED FOUND MON ALONGSIDE
ALSO SET: STD USFS MON 8" AG IN A 24"x24"x8" MOS AT TRUE POINT OF INTERSECTION (SEE DETAIL "B")
FWB: 13" PP S55°30'W 18.7 FT SCRIBED "T25NR12ES6CCBT"



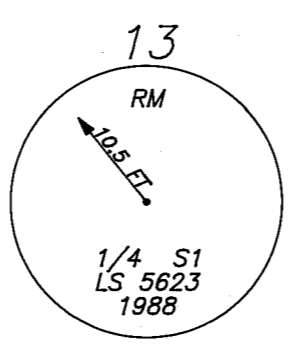
11
RECORD: POST IN A STONE MOUND
FWB: PP 15 IN. DIA N36°W 48 LKS DIST. BO 8 IN. DIA S42-1/2°E 76 LKS DIST. OAK CLUSTER 11 IN. DIA S87°W 14 LKS DIST.
FOUND: NOTHING AT CORNER LOCATION
FWB: 27" PP N36°00'W 31.7 FT. (48 LKS) NO SCRIBING (ASSUMED GLO)
SET: STD USFS MON 6" AG IN A 36"x36"x6" MOS
FWB: 16" PP S73°E 11.7 FT SCRIBED "T25NR12ES6BT" 6" WF S32°W 34.3 FT SCRIBED "T25NR11ES12BT"



18
RECORD: NOTHING SET
FOUND: NOTHING
SET: STD USFS DRIVE-IN MON W/36" OF ROD 6" AG IN A 24"x24"x6" MOS
FWB: 28" PINE S04°51'W 35.3 FT 22" ALDER N71°38'W 36.6 FT



6
RECORD: A GRANITE STONE 16X12X8 INS FOR QUARTER SECTION CORNER
FWB: YELLOW PINE 26 INS DIA S89°E 43 LKS. DIST. YELLOW PINE 8 INS DIA N34-1/2°W 68 LKS. DIST.
FOUND: 1" OD IP NO TAG 1" AG IN A 36"x36"x8" MOS (5PM76)
FWB: 27" PP S84°55'E 28.9 FT. (44 LKS) SCRIBING VISIBLE (GLO) 30" PP N37°56'W 44.9 FT (68 LKS) NO SCRIBING (ASSUMED GLO)
SET: REPLACED FOUND MON W/STD USFS MON 8" AG IN A 30"x30"x8" MOS
FWB: 15" IC N67°12'E 11.0 FT SCRIBED "1/4S5BT" BURIED FOUND MON ALONGSIDE USFS MON



13
RECORD: PITCH PINE 12 IN DIA
FOUND: 20" PP CORNER TREE SCRIBING VISIBLE (GLO)
SET: NOTHING AT CORNER LOCATION
FWB: STD USFS DRIVE-IN MON S25°54'E 10.5 FT (REFERENCE MON)

NONSTANDARD ABBREVIATIONS

FWB	FROM WHICH BEARS
BT	BEARING TREE
MOS	MOUND OF STONE
AG	ABOVE GROUND
JN	JUNIPER
DF	DOUGLAS FIR
WF	WHITE FIR
RF	RED FIR
PP	PONDEROSA PINE
SP	SUGAR PINE
JP	JEFFREY PINE
IC	INCENSE CEDAR
MON	MONUMENT
RM	REFERENCE MONUMENT

RECORD OF SURVEY

LOCATED IN SECTION 6 T25N R12E AND SECTION 31 T26N R12E MDM COUNTY OF PLUMAS, STATE OF CALIFORNIA FOR THE PLUMAS NATIONAL FOREST. P.O. BOX 11500 QUINCY, CA. 95971.

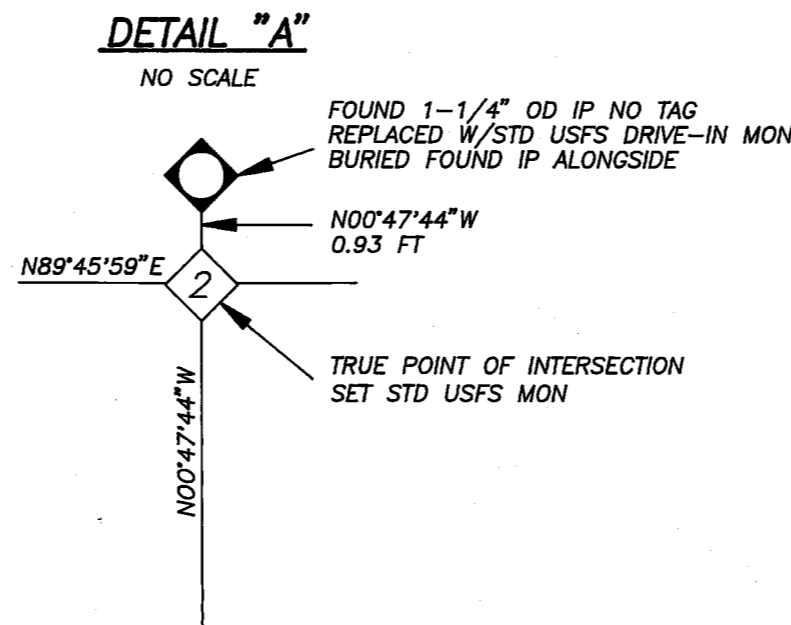
SURVEY CREW
R.Knoettgen
J.Schmidt
B.Willard
H.Stokes
D.Hobbs

DRAWN BY S.Sasser

SHEET: 3 OF 4

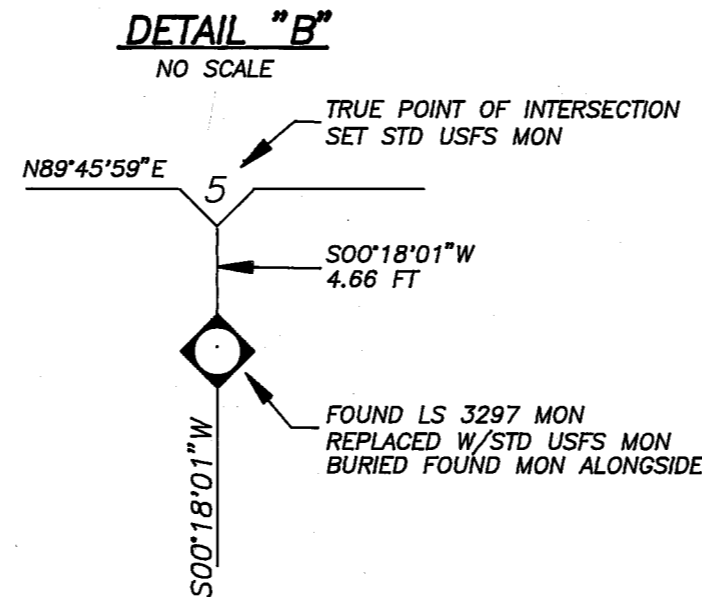
19
T25N R12E
C1/4 • S6

19
RECORD: NOTHING SET (GLO)
FOUND: NOTHING
SET: NOTHING SET CALCULATED POINT ONLY



20
T25N
R11E R12E
S12 S7
S13
LS 5623
1987

20
RECORD: FIR POST 48X4X4 IN IN A STONE MOUND (GLO)
FWB: 36 IN DIA N31-1/2°W 48 LKS DIST.
PP 18 IN DIA N43°W 117 LKS DIST.
PP 30 IN DIA S68-1/2°E 90 LKS DIST.
PP 36 IN DIA S19-1/2°E 21 LKS DIST.
FOUND: 18"x18"x4" MOS (GLO)
FWB: 41" PP SNAG N31°58'E 33.0 FT (50 LKS) SCRIBING VISIBLE (GLO)
28" IC N42°47'W 78.3 FT (119 LKS) CLOSED FACE (ASSUMED GLO)
37" PP S68°47'W 80.4 FT (92 LKS) CLOSED FACE (ASSUMED GLO)
STUMP HOLE S19°54'E 14.1 FT (21 LKS) OLD LOG LAYING ALONGSIDE (ASSUMED GLO)
SET: STD USFS MON 10" AG IN 36"x36"x10" MOS
FWB: 15" DF S47°08'11"E 42.3 FT SCRIBED "T25NR12ES7BT"



21
T26N
R11E R12E
S36 S31
LS 5623
1988

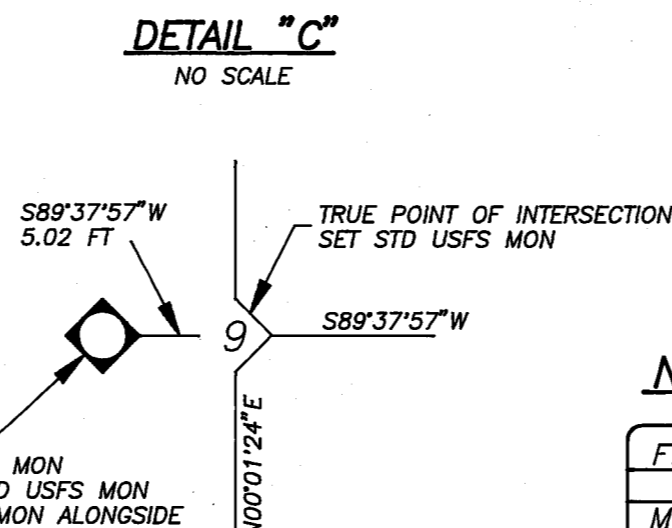
21
RECORD: 4"x4" POST IN MOS (GLO)
FWB: 8" DIA OAK N65°E 54 LKS DIST.
FOUND: 2" OD IP W/ 2-1/2" DIA CAP MARKED "W 1/4 31" (UNKNOWN ORIGIN) 12" AG IN A 36"x36"x12" MOS
FWB: 20" BO N78°E 36.5 FT (55 LKS) W/1946, 1958 & 1969 KTAGS (ASSUMED GLO)
SET: REPLACED FOUND MON W/STD USFS DRIVE-IN MON 8" AG IN A 36"x36"x8" MOS BURIED FOUND MON ALONGSIDE

22
T26N R12E
1/4 S 30
S 31
LS 5623
1988

22
RECORD: 15"x12"x7" STONE IN MOS 4' DIA BY 2' HIGH (GLO)
FOUND: 1-1/2" OD IP W/1-1/2" ALUM TAG RCE 11128 13" AG IN A 36"x36"x8" MOS (3RS146)
FWB: 8" BO N48°E 12.4 FT (3RS146)
22" PP S16°W 19.0 FT (3RS146)
11" PP S48°E 24.2 FT (3RS146)
SET: REPLACED FOUND MON W/STD USFS DRIVE-IN MON W/24" OF ROD 8" AG IN A 36"x36"x6" MOS BURIED FOUND MON ALONGSIDE

23
WULFERT
1/4
S31 S32
LS 4342

23
RECORD: STONE 40"x18"x3" SET IN MOS 4' IN DIA AND 2' HIGH (GLO)
FWB: 12" DIA OAK N38°E 30 LKS.
17" DIA OAK N27°W 138 LKS.
FOUND: 1/2" REBAR W/1-1/2" ALUM CAP LS4342 (5RS7) W/STONE 36"x18"x3" ALONGSIDE IN A 4' DIA 18" HIGH MOS (GLO)
FWB: 16" BO HOLLOW STUMP N26°E 21.0 FT W/ 2 K-TAGS (ASSUMED GLO)
26" DIA HOLLOW OAK LOG N27°W 91 FT. (ASSUMED GLO)
SET: NOTHING AT CORNER LOCATION
FWB: 4" BO N14°07'W 34.7 FT. SCRIBED "1/4 S31 BT"
20" PP S70°43'E 24.2 FT. SCRIBED "1/4 S32 BT"



24
T26N R12E
C1/4 • S31
LS 5623
1988

24
RECORD: NOTHING (GLO)
FOUND: NOTHING
SET: STD USFS MON ON 24" OF ROD 8" AG IN 36"x36"x8" MOS
FWB: STD USFS DRIVE-IN MON N21°40'50"W 109.93 FT (REFERENCE MONUMENT)
STD USFS DRIVE-IN MON S89°03'42"W 307.28 FT (REFERENCE MONUMENT)

FOUND LS 3297 MON
REPLACED W/STD USFS MON
BURIED FOUND MON ALONGSIDE



United States Department of the Interior

BUREAU OF LAND MANAGEMENT
California State Office
2800 Cottage Way, Room E-2845
Sacramento, California 95825-1889

MAY 14 1993



IN REPLY REFER TO:
9600
T25626NR12EM
(CA 942.15)

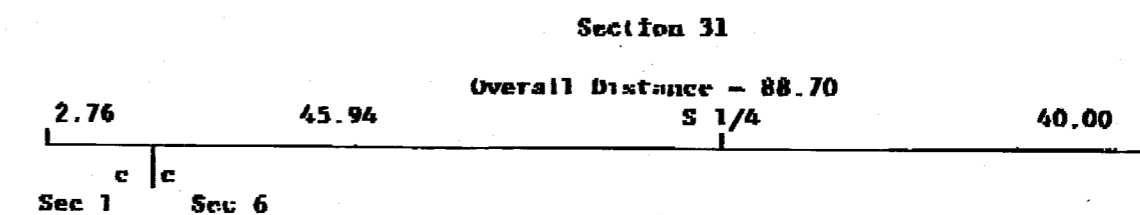
Mr. William C. Snow
Forest Land Surveyor
Plumas National Forest
159 Lawrence Street
Post Office Box 11500
Quincy, California 95971 6025

Dear Mr. Snow,

This is in response to your letter dated May 4, 1993, concerning the record distance to be used in proportioning in the lost south quarter corner of section 31, T. 26 N., R. 12 E., M.D.M.

The pertinent plats were approved May 4, 1880 (T. 26 N.), and May 12, 1881 (T. 25 N.). From examining these plats, it is apparent that for the time between sections 6 and 31, the section corners and the 1/4, 1/16 and lower order corners are offset.

The 1881 resurvey (by Minto) found the 1/4 section corner of section 31, which had been set by the 1880 survey (Branham). Therefore, you would use the 1881 resurvey (by Minto) overall record distance for proportioning in the south quarter corner of section 31, as shown below:



If you should have any questions regarding this letter, please feel free to contact me at (916) 978-4775, or Larry Jepsen of my staff at (916) 978-4779.

Sincerely,
Clifford A. Robinson
Clifford A. Robinson
Chief, Branch of
Cadastral Survey

NONSTANDARD ABBREVIATIONS

FWB	FROM WHICH BEARS
BT	BEARING TREE
MOS	MOUND OF STONE
AG	ABOVE GROUND
JN	JUNIPER
DF	DOUGLAS FIR
WF	WHITE FIR
RF	RED FIR
PP	PONDEROSA PINE
SP	SUGAR PINE
JP	JEFFREY PINE
IC	INCENSE CEDAR
MON	MONUMENT
RM	REFERENCE MONUMENT

RECORD OF SURVEY

LOCATED IN SECTION 6 T25N R12E AND SECTION 31 T26N R12E MDM COUNTY OF PLUMAS, STATE OF CALIFORNIA FOR THE PLUMAS NATIONAL FOREST. P.O. BOX 11500 QUINCY, CA. 95971.

SURVEY CREW
R.Knoettgen
B.Willard
D.Hobbs
J.Schmidt
H.Stokes

DRAWN BY S.Sasser

SHEET: 4 OF 4