

BASIS OF BEARINGS

THE BEARING OF N 89° 47' 22" E FOR THE SOUTH LINE OF NORTH STREET SHOWN IN BOOK 7 OF RECORDS OF SURVEYS AT PAGE 100. FROM THE NE CORNER OF BLOCK 6 TO THE NE CORNER OF BLOCK 4 OF GOODWINS ADDITION TO BECKWITH. AS FOUND MONUMENTED IS THE BASIS OF BEARINGS SHOWN ON THIS MAP.

SURVEYOR'S STATEMENT

THIS MAP CORRECTLY REPRESENTS A SURVEY MADE BY ME OR UNDER MY DIRECTION IN CONFORMANCE WITH THE REQUIREMENTS OF THE LAND SURVEYOR'S ACT AT THE REQUEST OF WILLIAM AUBREY POWERS IN NOVEMBER 1993.

*Gerald Joseph Tibbadeaux*  
 GERALD JOSEPH TIBBDEAUX P.L.S. 6051  
 LICENSE EXPIRES 6/30/97



COUNTY SURVEYOR'S STATEMENT

THIS MAP HAS BEEN EXAMINED IN ACCORDANCE WITH SECTION 8766 OF THE LAND SURVEYOR'S ACT THIS 28<sup>TH</sup> DAY OF December, 1993.

*R. Tom Hunter*  
 R. TOM HUNTER R.C.E. 30515  
 COUNTY SURVEYOR  
 LICENSE EXPIRES 3/31/96



COUNTY RECORDER'S STATEMENT

FILED THIS 28<sup>TH</sup> DAY OF December, 1993 AT 1:57 PM IN BOOK 9 OF RECORDS OF SURVEYS. AT PAGE 136 AT THE REQUEST OF THE COUNTY SURVEYOR.

FEE \$ 5.00

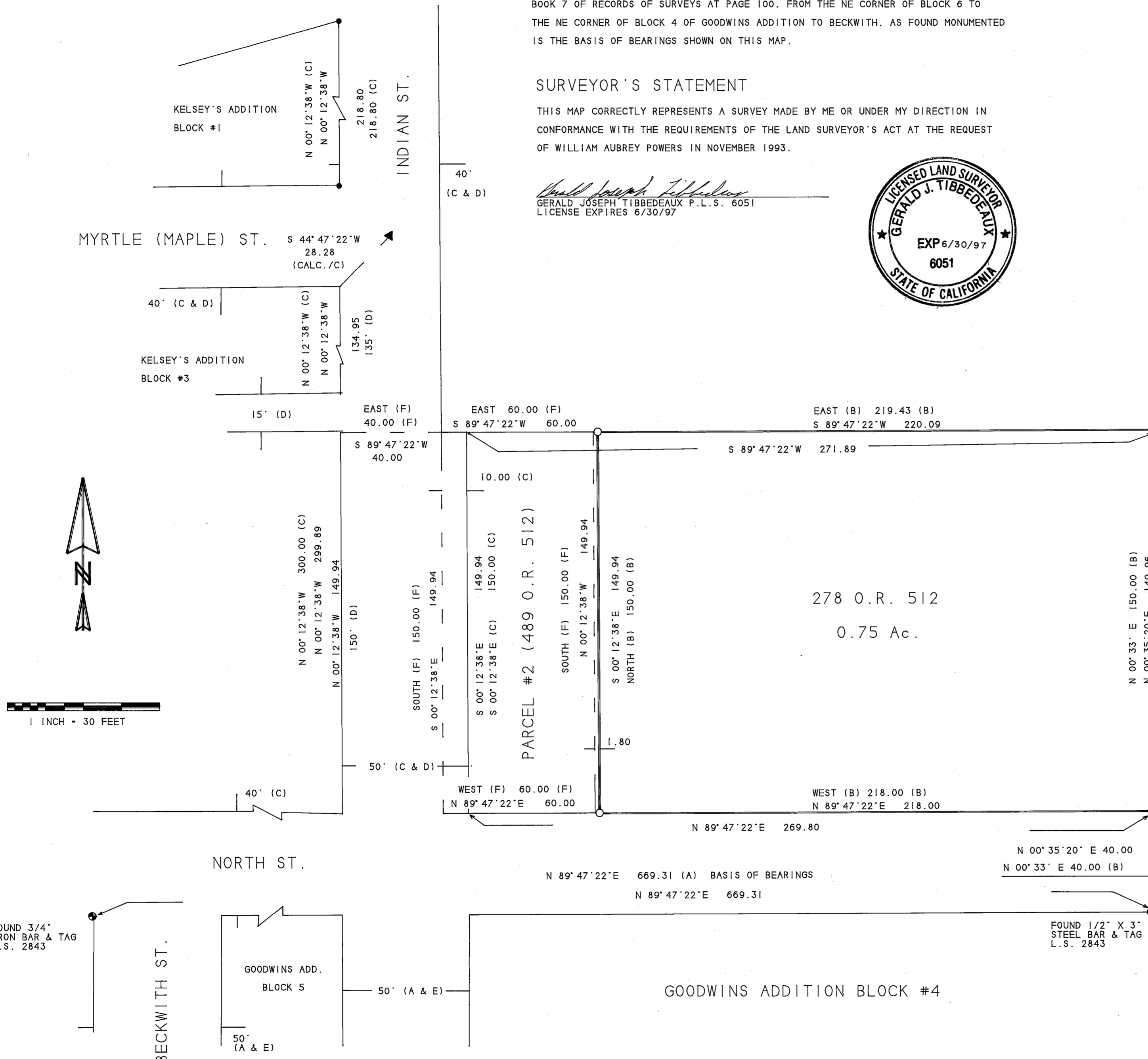
JUDITH WELLS  
 COUNTY RECORDER

FILE No. 10297

*Jane A. Peay*  
 DEPUTY

LEGEND

- SET 3/4" IRON PIPE & TAG L.S. 6051
- ▲ FOUND R/R SPIKE STAMPED L.S. 2843
- FOUND REBAR & ALUMINUM CAP L.S. 2843
- FOUND MONUMENT AS NOTED
- (A) RECORD INFORMATION PER 7 R.S. 100
- (B) RECORD INFORMATION PER 278 O.R. 512
- (C) RECORD INFORMATION PER 7 R.S. 148
- (D) RECORD INFORMATION PER R.M. BK. A. PG. 2
- (E) RECORD INFORMATION PER R.M. BK. A. PG. 3
- (F) RECORD INFORMATION PER 489 O.R. 512
- (CALC./C) INFORMATION CALCULATED FROM RECORD INDICATED



BECKWIRTH GENESSEE ROAD (CLOVER STREET)

RECORD OF SURVEY

FOR

WILLIAM AUBREY POWERS & SANDRA ILENE POWERS

OF

THE PROPERTY DESCRIBED IN BOOK 278 OFFICIAL RECORDS PAGE 512  
 WITHIN THE NW 1/4 OF THE NE 1/4 OF SECTION 26, T. 23 N., R. 14 E., M.D.M.  
 PLUMAS COUNTY CALIFORNIA  
 NOVEMBER 1993

SCALE 1 INCH = 30 FEET

Tibbadeaux Surveying  
 PO Box 1960  
 Portola, CA 96122  
 (916) 832-5772

93-09-1

sheet 1 of 1