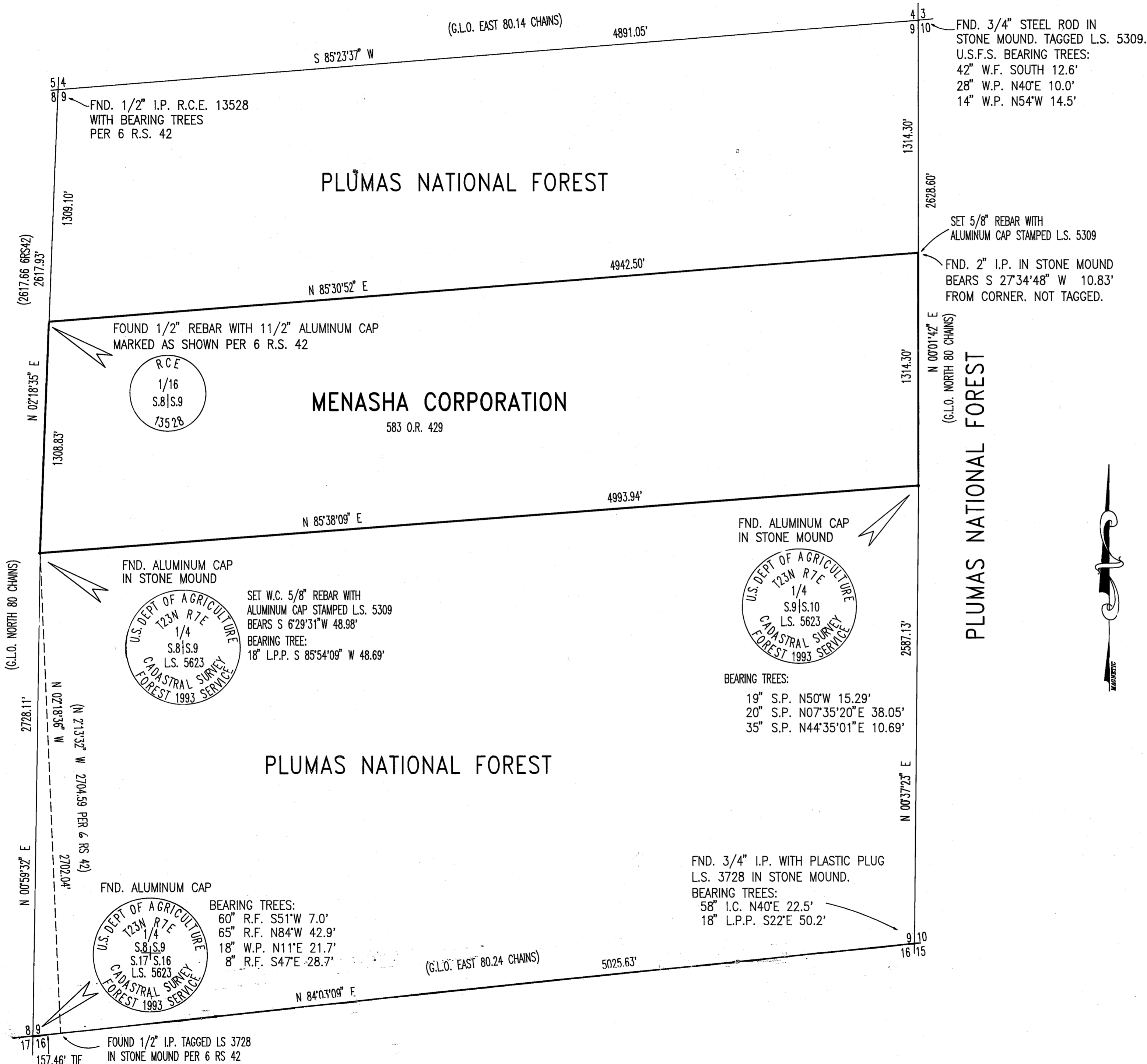


PLUMAS NATIONAL FOREST

PLUMAS NATIONAL FOREST

PLUMAS NATIONAL FOREST



SURVEYOR'S STATEMENT:

THIS MAP CORRECTLY REPRESENTS A SURVEY MADE BY ME OR UNDER MY DIRECTION IN CONFORMANCE WITH THE REQUIREMENTS OF THE LAND SURVEYOR'S ACT AT THE REQUEST OF MENASHA CORP. IN OCTOBER, 1993.

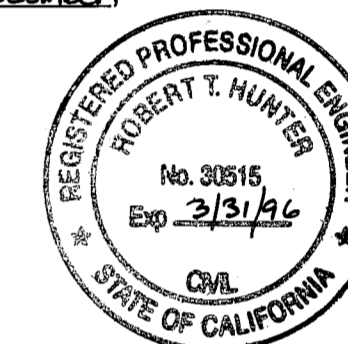
C. G. McDivitt
 CLIFFORD G. McDIVITT, PLS 5309
 LICENSE EXPIRES: 12-31-95



COUNTY SURVEYOR'S STATEMENT:

THIS MAP HAS BEEN EXAMINED IN ACCORDANCE WITH SECTION 8766 OF THE LAND SURVEYOR'S ACT THIS 28TH DAY OF December, 1993.

R. Tom Hunter
 R. TOM HUNTER, R.C.E. 30515
 PLUMAS COUNTY SURVEYOR
 LICENSE EXPIRES: 3-31-96



COUNTY RECORDER'S STATEMENT:

FILED THIS 28TH DAY OF December, 1993, AT 1:55 P.M. IN BOOK 9 OF RECORD OF SURVEYS, AT PAGE 134, AT THE REQUEST OF THE COUNTY SURVEYOR DOC. NO. 10295 FEE \$ 500 COUNTY RECORDER

Sue Alpey
 COUNTY RECORDER

BASIS OF BEARINGS

MONUMENTS FOUND AT THE N.E. CORNER OF SECTION 8 AND N. 1/16 CORNER BETWEEN SECTION 8 AND SECTION 9, TOWNSHIP 23 NORTH, RANGE 7 EAST, M.D.M. AS SHOWN IN BOOK 6 OF RECORDS OF SURVEYS AT PAGE 42.

RECORD OF SURVEY FOR MENASHA CORP.

BEING A PORTION OF
SEC. 9 T.23N., R.7E., M.D.M.
 IN THE UNINCORPORATED TERRITORY OF
PLUMAS COUNTY, CALIFORNIA
 SCALE: 1" = 400' OCTOBER, 1993

CLIFF McDIVITT
 14618 TYLER FOOTE RD.
 NEVADA CITY, CA 95959
 Ph. (916) 292-3893 FAX (916) 292-0156