

**SURVEYOR'S STATEMENT**

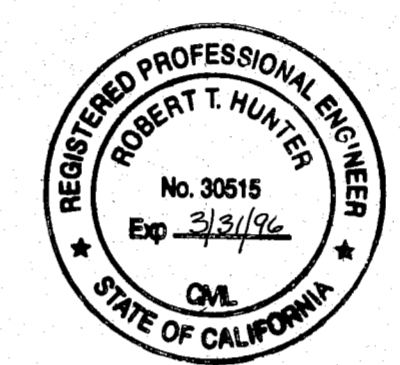
THIS MAP CORRECTLY REPRESENTS A SURVEY MADE BY ME IN CONFORMANCE WITH THE REQUIREMENTS OF THE LAND SURVEYORS' ACT AT THE REQUEST OF KEN ROPER IN MARCH, 1993



*Lawrence J. Brock*  
LAWRENCE J. BROCK RCE 13528

**COUNTY SURVEYOR'S STATEMENT**

THIS MAP HAS BEEN EXAMINED IN ACCORDANCE WITH SECTION 8766 OF THE LAND SURVEYORS' ACT THIS 16<sup>TH</sup> DAY OF December 1993



*R. Tom Hunter*  
R. TOM HUNTER RCE 30515  
PLUMAS COUNTY SURVEYOR  
LICENSE EXPIRES MARCH 31, 1996

**RECORDER'S STATEMENT**

FILED THIS 16<sup>TH</sup> DAY OF December 1993 AT 1:58 PM IN BOOK 9 OF RECORD OF SURVEYS, AT PAGE 130, AT THE REQUEST OF THE COUNTY SURVEYOR JUDITH WELLS COUNTY RECORDER BY *Jillian H. Payne* DEPUTY

**NOTES.**

- ① THIS RECORD OF SURVEY WAS PREPARED TO REFLECT APPARENT ERROR CORRECTIONS OF THE AMERVALE FILING & ALSO TO REFLECT MONUMENT PLACEMENT.
- ② BACK TANGENT BEARING OF BOTH CURVES IS S00°02'30"W
- ③ MON. A & B WILL FORM CORNERS OF IMPENDING MINOR LOT LINE ADJUSTMENT

**RECORD OF SURVEY**

FOR  
**KEN ROPER**

LOTS 2 & 3 & N'LY 16.5' OF LOT 4, ALL IN BLOCK 2 OF AMERVALE SUBDIVISION OF BOOK 1 OF MAPS AT PAGE 71, PLUMAS COUNTY RECORDS; ALSO WITHIN SECTION 19, T.24N., R.10E., MDM. PLUMAS COUNTY, CALIFORNIA

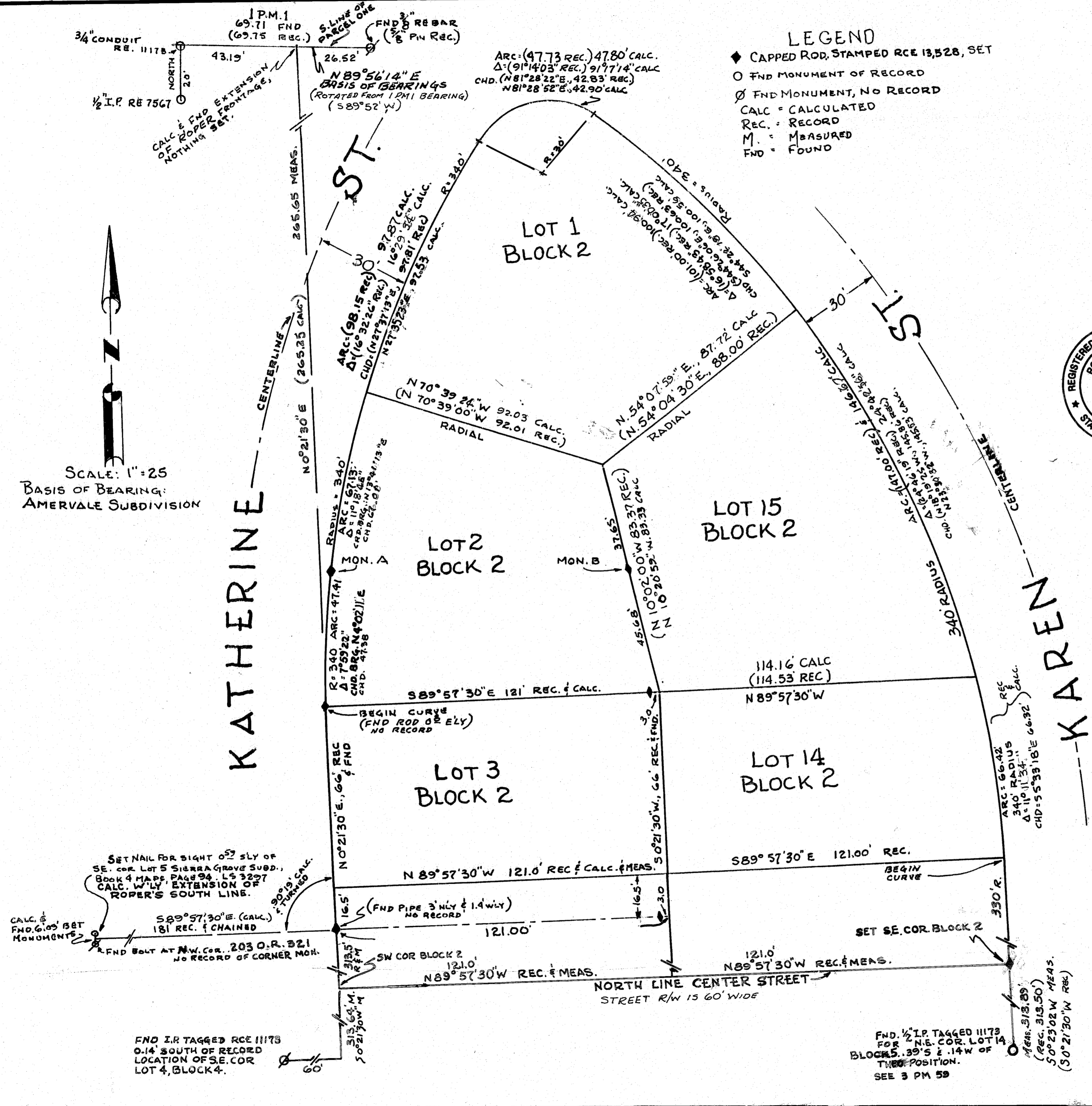
SCALE 1" = 25'

MAY 1993

SHEET 1 OF 1

**LEGEND**

- ◆ CAPPED ROD, STAMPED RCE 13,528, SET
- FND MONUMENT OF RECORD
- ∅ FND MONUMENT, NO RECORD
- CALC = CALCULATED
- REC = RECORD
- M = MEASURED
- FND = FOUND



SCALE: 1" = 25'  
BASIS OF BEARING:  
AMERVALE SUBDIVISION

KATHERINE ST.

KAREN ST.

LOT 1  
BLOCK 2

LOT 2  
BLOCK 2

LOT 15  
BLOCK 2

LOT 3  
BLOCK 2

LOT 14  
BLOCK 2

FND I.P. TAGGED RCE 11173  
0.14' SOUTH OF RECORD  
LOCATION OF S.E. COR.  
LOT 4, BLOCK 4.

FND 1/2 I.P. TAGGED 11173  
FOR N.E. COR. LOT 14  
BLOCK 5. 39'S & 14'W OF  
THE POSITION.  
SEE 3 PM 59'