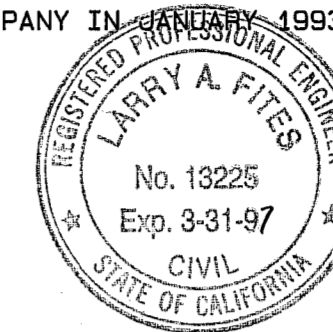


NOTES:

1. THE BASIS OF BEARINGS FOR THIS MAP IS THE WEST HALF OF THE SOUTH SECTION LINE OF SECTION 32, T. 22 N., R. 13 E., GIVEN AS N 89° 08' 48" E IN BOOK 5 OF RECORD OF SURVEYS AT PAGE 140, PLUMAS COUNTY RECORDS, SEE DETAIL B.
2. THIS RECORD OF SURVEY IS BEING FILED TO ESTABLISH THE POSITION OF THE SEWAGE TREATMENT PLANT FACILITY PARCEL AS DESCRIBED IN THE DEED RECORDED IN BOOK 589 OF OFFICIAL RECORDS AT PAGE 691.
3. THE BEARING ON A PORTION OF THE NORTH BOUNDARY OF WHITEHAWK RANCH, SHOWN AS S 45° 00' 20" W PER 6 R.S. 63 AND DEED RECORDED IN BOOK 589 OF OFFICIAL RECORDS AT PAGE 691, WAS FOUND TO BE N 45° 01' 23" E AS MONUMENTED BY THE LONG ESTABLISHED FENCE LINE AND THE RECORD MONUMENTS AS SHOWN ON THE MAP.

SURVEYOR'S STATEMENT

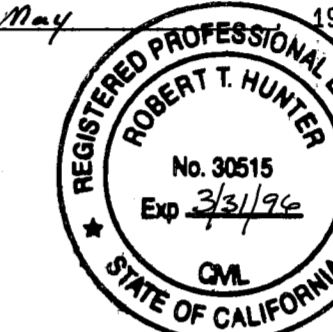
THIS MAP CORRECTLY REPRESENTS A SURVEY MADE BY ME OR UNDER MY DIRECTION IN CONFORMANCE WITH THE REQUIREMENTS OF THE LAND SURVEYORS' ACT AT THE REQUEST OF WHITEHAWK RANCH MUTUAL WATER COMPANY IN JANUARY 1993.



Larry A. Fites
LARRY A. FITES, R.C.E. 13225
LICENSE EXP. DATE 3-31-97

COUNTY SURVEYOR'S STATEMENT

THIS MAP HAS BEEN EXAMINED IN ACCORDANCE WITH SECTION 8766 OF THE LAND SURVEYORS' ACT THIS 2nd DAY OF May 1993.



R. Tom Hunter
R. TOM HUNTER, R.C.E. 30515
PLUMAS COUNTY SURVEYOR
LICENSE EXP. DATE 3-31-96

COUNTY RECORDER'S STATEMENT

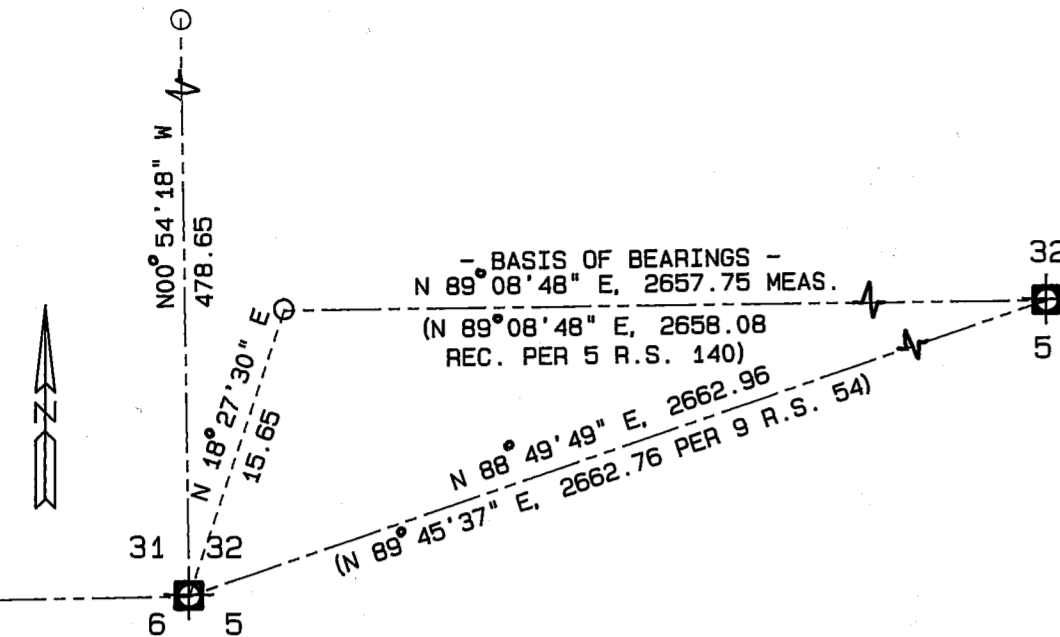
FILED THIS 7TH DAY OF May 1993, AT 2:45 P.M. IN BOOK 9 OF RECORDS OF SURVEYS, AT PAGE 117 AT THE REQUEST OF THE COUNTY SURVEYOR.

JUDITH WELLS
COUNTY RECORDER
BY: *JoAnn Van Selder*
DEPUTY

FEE: 5.00
FILE NO: 3104

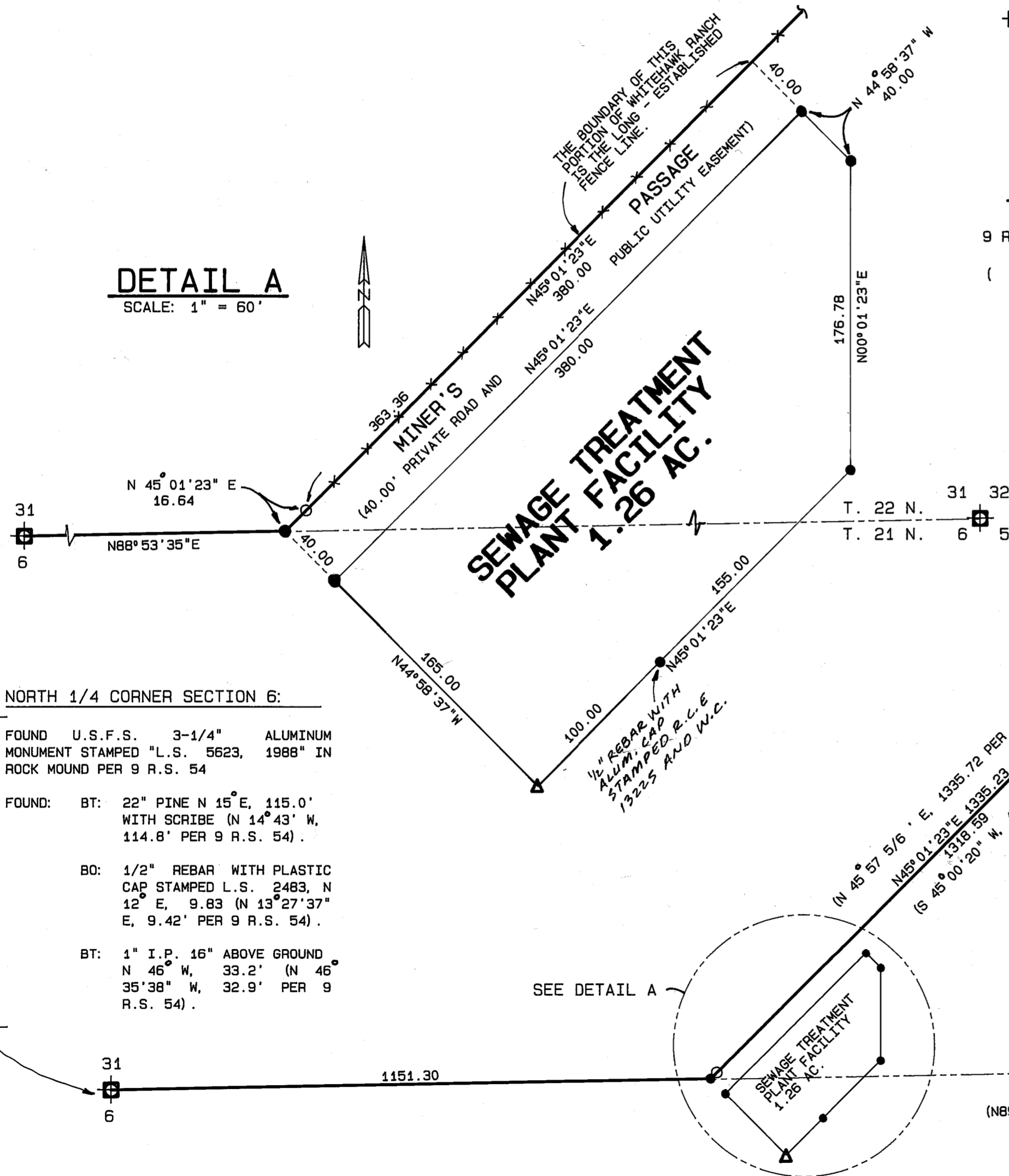
DETAIL B

SCALE: 1" = 10'



DETAIL A

SCALE: 1" = 60'



LEGEND

- ⊕ FOUND 3 1/4" ALUM. CAP STAMPED AS NOTED.
- FOUND 1/2" REBAR WITH ALUM. CAP STAMPED L.S. 2843 PER 6 R.S. 63 UNLESS OTHERWISE NOTED.
- SET 1/2" REBAR WITH ALUM. CAP STAMPED R.C.E. 13225.
- △ COMPUTED POSITION, NOTHING SET.
- 9 RS 54 RECORD OF SURVEY, BOOK AND PAGE.
- () RECORD DATA PER 6 R.S. 63 UNLESS OTHERWISE NOTED.

FOUND 1/2" I.P. PER 1 R.S. 93 WITH NO TAG. TAGGED R.C.E. 13225.
SCALE: 1" = 200'

SECTION CORNER:

FOUND U.S.F.S. 3-1/4" ALUMINUM MONUMENT STAMPED "L.S. 5623, 1988" PER 9 R.S. 54
FOUND: BO: 1/2" REBAR WITH PLASTIC CAP STAMPED L.S. 2483, N 18° E, 15.7 (N 16° 41' 41" E, 15.95' PER 9 R.S. 54).

NORTH 1/4 CORNER SECTION 5:

FOUND U.S.F.S. 3-1/4" ALUMINUM MONUMENT STAMPED "L.S. 5623, 1988" IN ROCK MOUND PER 9 R.S. 54
FOUND: BT: 26" PINE S 40° E, 17.8' WITH SCRIBE (NO RECORD).
BT: 16" PINE N 59 1/2° E, 38.6' WITH SCRIBE (NO RECORD).
BT: 17" PINE N 81° W, 14.0' (NO RECORD).

RECORD OF SURVEY

FOR
**WHITEHAWK RANCH
MUTUAL WATER COMPANY**

WITHIN THE SE 1/4 OF SECTION 31 T. 22 N., R. 13 E., M.D.M. AND THE NE 1/4 OF SECTION 6 T. 21 N., R. 13 E., M.D.M. PLUMAS COUNTY, CALIFORNIA

LARRY FITES ENGINEERING
P.O. BOX 20308
GRAEAGLE, CALIFORNIA 96103
R.C.E. 13225