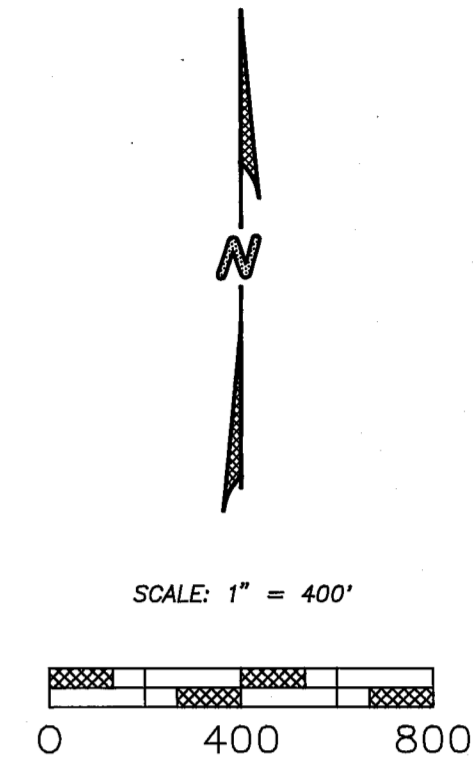
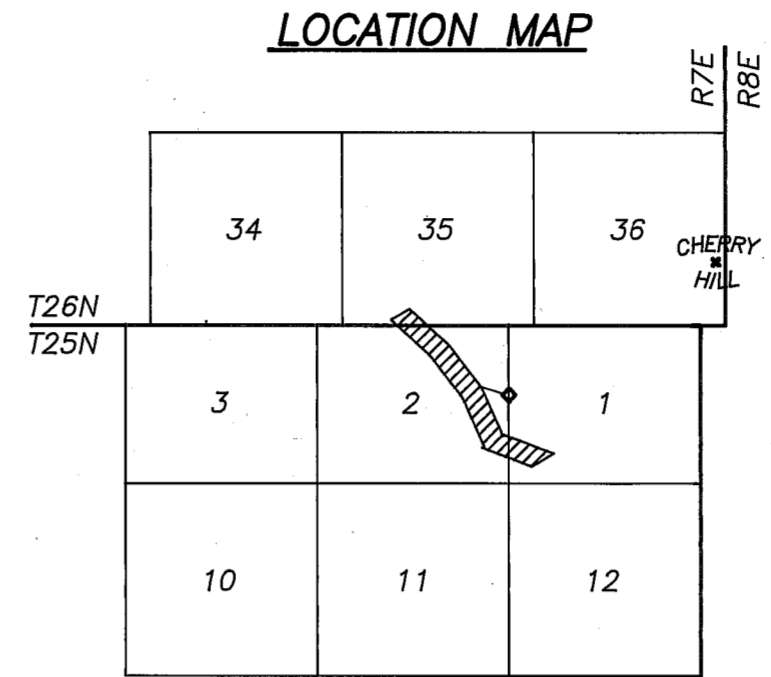


**DETAIL 1:**  
NO SCALE

NOTES: THE BEARING FROM CORNER 3 TO CORNER 4 "SUMMIT LOAD" IS N59°00'28"E 717.31 FEET.  
THE BEARING FROM CORNER 5 TO CORNER 8 "MAY LOAD" IS S59°47'34"W 597.60 FEET.

**DETAIL 2:**  
NO SCALE

NOTES: FULL DESCRIPTION OF ANGLE POINT #1 AND #2 ON PAGE 2 OF 2, AS AP1 AND AP2.



**BASIS OF BEARING**

THE BASIS OF BEARING IS A SOLAR OBSERVATION TAKEN AT A STATION WHICH BEARS S52°31'51"W 606.99 FT. FROM CORNER #2.

**NOTES**

A STANDARD USFS DRIVE-IN MONUMENT IS A 5/8" DIAMETER ALUMINUM ROD WITH A 3 1/4" DIAMETER ALUMINUM CAP MARKED WITH THE USFS LOGO.

ALL DISTANCES TO ORIGINAL BEARING TREES ARE TO THE 1916 FACE OF TREE.  
ALL DISTANCES TO NEW BEARING TREES ARE TO THE CENTER OF TREE.

**SURVEY HISTORY**

DATE	NAME	REG. NO.	AGENCY
R1 1916	Arthur W. Keddie		GLO

**LEGEND**

① FOUND CORNER  
◇ SET CORNER



**SURVEYOR'S STATEMENT**

This map correctly represents a survey made by me or under my direction in conformance with the requirements of the Land Surveyors' Act at the request of Plumas National Forest in APRIL 22, 1993.

*William G. Snow*  
William Glenn Snow L.S. 5623  
License Exp. Date 12/31/94

**COUNTY SURVEYOR'S STATEMENT**

This map has been examined in accordance with Section 8766 of the Land Surveyors' Act this 27<sup>th</sup> day of April, 1993.

*R. Tom Hunter*  
R. Tom Hunter R.C.E. 30515  
Plumas County Surveyor  
License Exp. Date 03/31/96

**RECORDER'S STATEMENT**

Filed this 27<sup>th</sup> day of April, 1993 at 1:10 P.m. in Book 9 of Records of Surveys, at page 116, 114, at the request of the County Surveyor.

Fee: \$700  
File No: 2794

Judith Wells  
County Recorder  
By *J. A. Deary*  
Deputy

**RECORD OF SURVEY**

LOCATED IN SECTION 1, 2 T25N R7E AND SECTION 35 T26N R7E MDM COUNTY OF PLUMAS, STATE OF CALIFORNIA FOR THE PLUMAS NATIONAL FOREST, P.O. BOX 11500 QUINCY, CA. 95971.

SURVEY CREW: R. Knoettgen, L. Gross, D. Hobbs  
DRAWN BY: S. Sasser

J. Schmidt, T. Wadnizak  
SHEET: 1 OF 2