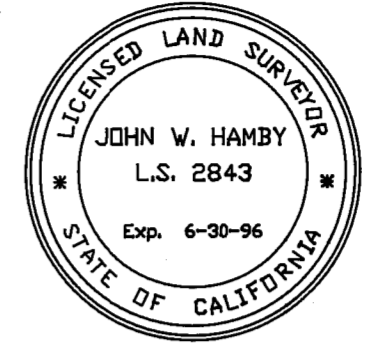


SURVEYOR'S STATEMENT

This map correctly represents a survey made by me or under my direction in conformance with the requirements of the Land Surveyors' Act at the request of Sierra Pacific Industries in April, 1992.



John W. Hamby
John W. Hamby LS 2843

COUNTY SURVEYOR'S STATEMENT

This map has been examined in accordance with Section 8766 of the Land Surveyors' Act this 17th day of July, 1992

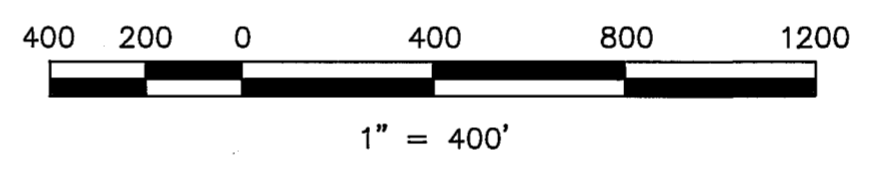


R. Tom Hunter
R. Tom Hunter RCE 30515
PLUMAS COUNTY SURVEYOR
License Expiration Date 3/31/96

RECORDER'S STATEMENT

Filed this 17th day of July, 1992 at 2:41 p.m. in Book 9 of Record of Surveys, at page 80-81, at the request of the County Surveyor.

Fee 7.00
File No. 5496
Judith Wells
County Recorder
by *Jolene Van Gelder*
Deputy

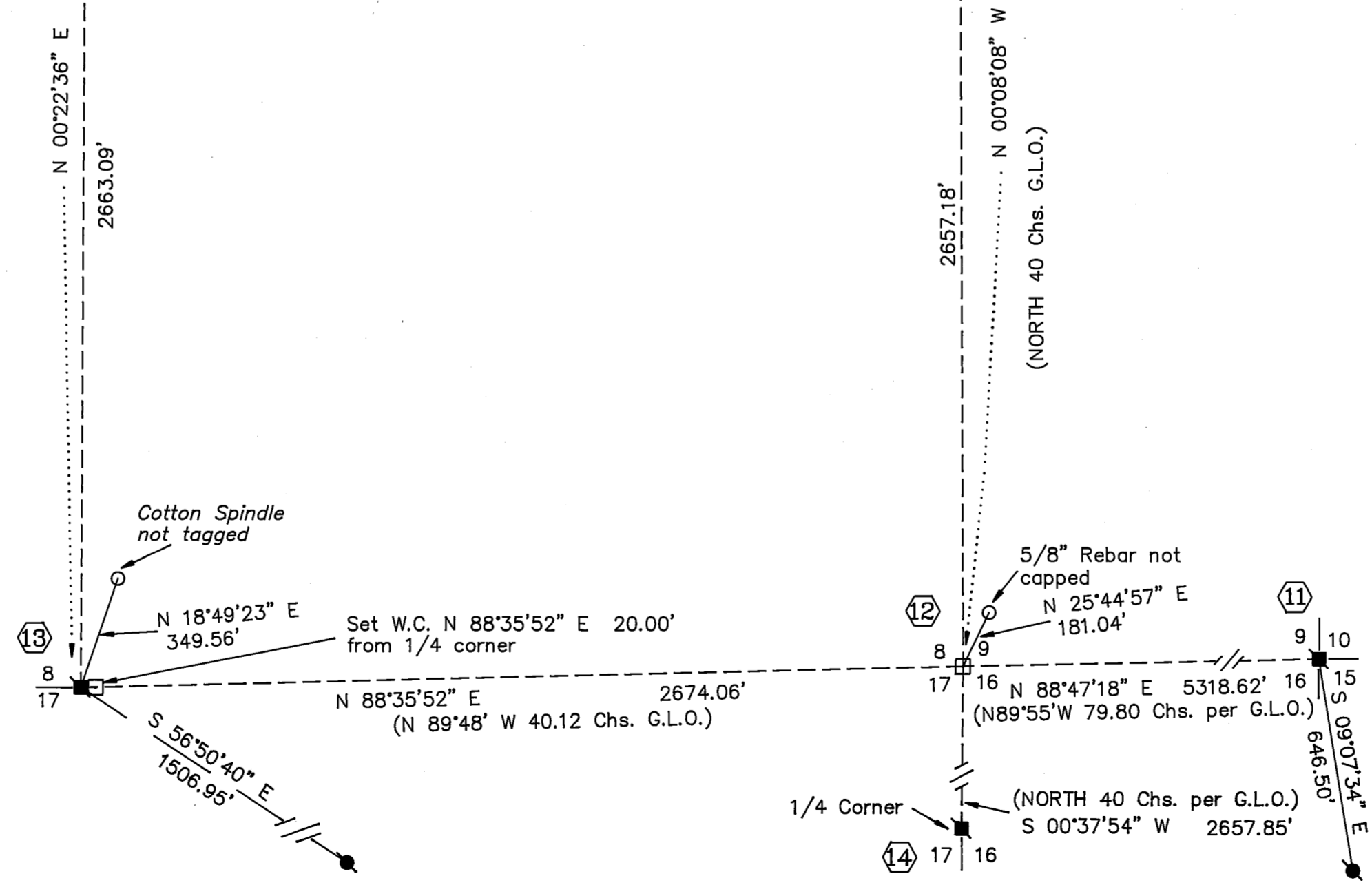


BASIS OF BEARINGS

The Basis of Bearings is the California Coordinate System 83, Zone 1, from G.P.S. points established by the U.S.F.S. from known G.P.S. Station Nasa 7221 and G.P.S. Station shown. The rotation angle at Station shown is 0°47'56". Distances shown are Grid distances to get ground distances multiply by 1.00017531.

LEGEND

- FOUND point as described
- SET point as described
- G.P.S. points set by U.S.F.S. are 5/8" Rebar with Plastic Cap stamped CONTROL PNF
- Other G.P.S. points set as described
- ① Corner Note Key See Sheet 2 for descriptions



RECORD OF SURVEY
for
Sierra Pacific Industries

A portion of Section 8
T. 23 N., R. 11 E., M.D.M.
PLUMAS COUNTY - CALIFORNIA
SCALE 1" = 400' MAY, 1992

HAMBY SURVEYING INC.
P.O. Box 1209
PORTOLA, CA. 96122
Phone 916-832-5571