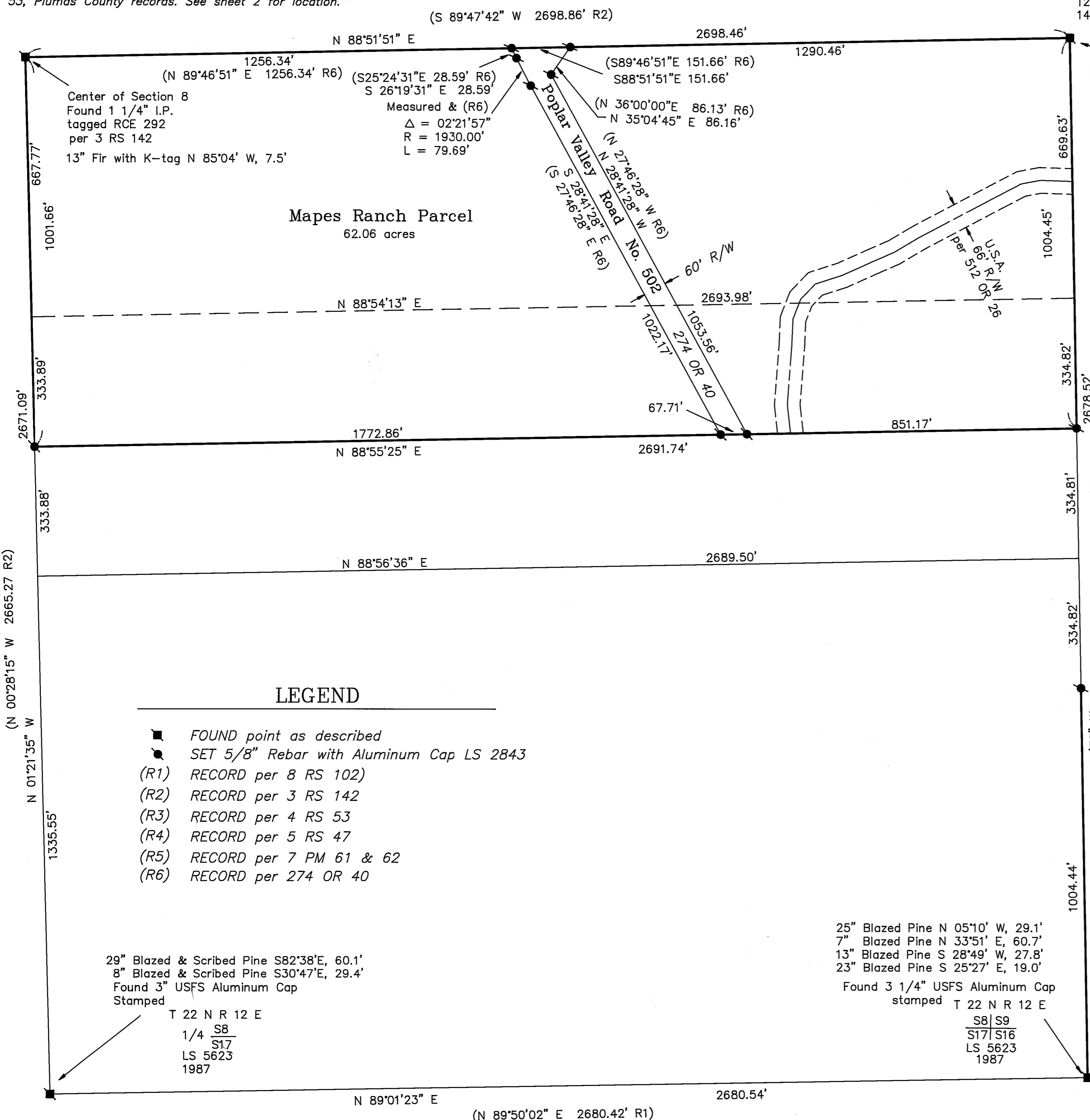


**Basis of Bearings**

The Basis of Bearings of this map is the South Line of Section 9 shown as S 89°51'03" E in Book 4 of Record of Surveys at Page 53, Plumas County records. See sheet 2 for location.



**LEGEND**

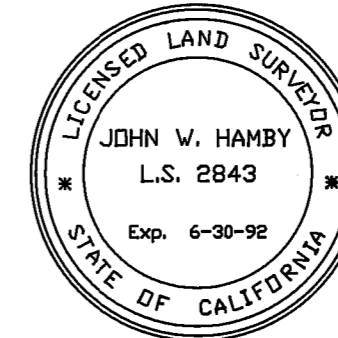
- FOUND point as described
- SET 5/8" Rebar with Aluminum Cap LS 2843
- (R1) RECORD per 8 RS 102
- (R2) RECORD per 3 RS 142
- (R3) RECORD per 4 RS 53
- (R4) RECORD per 5 RS 47
- (R5) RECORD per 7 PM 61 & 62
- (R6) RECORD per 274 OR 40

29" Blazed & Scribed Pine S82°38'E, 60.1'  
 8" Blazed & Scribed Pine S30°47'E, 29.4'  
 Found 3" USFS Aluminum Cap  
 Stamped  
 T 22 N R 12 E  
 1/4 S8  
 S17  
 LS 5623  
 1987

25" Blazed Pine N 05°10' W, 29.1'  
 7" Blazed Pine N 33°51' E, 60.7'  
 13" Blazed Pine S 28°49' W, 27.8'  
 23" Blazed Pine S 25°27' E, 19.0'  
 Found 3 1/4" USFS Aluminum Cap  
 stamped T 22 N R 12 E  
 S8|S9  
 S17|S16  
 LS 5623  
 1987

**SURVEYOR'S STATEMENT**

This map correctly represents a survey made by me or under my direction in conformance with the requirements of the Land Surveyors' Act at the request of Mapes Ranch Inc., et al in December, 1991.



*John W. Hamby*  
 John W. Hamby LS 2843

**COUNTY SURVEYOR'S STATEMENT**

This map has been examined in accordance with Section 8766 of the Land Surveyors' Act this 29th day of May, 1992



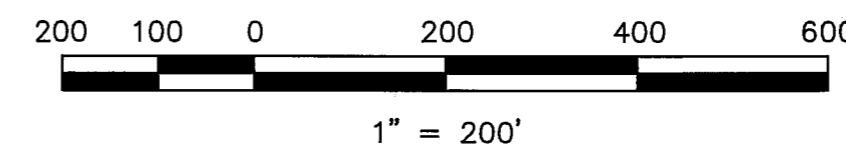
*R. Tom Hunter*  
 R. Tom Hunter RCE 30515  
 PLUMAS COUNTY SURVEYOR  
 License Expiration Date 3/31/96

**RECORDER'S STATEMENT**

Filed this 2nd day of June, 1992 at 8:45A.m. in Book 9 of Record of Surveys, at page 75 & 76, at the request of the County Engineer.

Fee \$ 700  
 File No. 4135

Judith Wells  
 County Recorder  
 by *Sue A. Gray*  
 Deputy



See Sheet 2

**RECORD OF SURVEY**  
 for  
 Mapes Ranch Inc., et al

A portion of Sections 8 and 9,  
 T. 22 N., R. 12 E., M.D.M.

PLUMAS COUNTY — CALIFORNIA  
 SCALE 1" = 200' January, 1992

HAMBY SURVEYING INC.  
 P.O. BOX 1209  
 PORTOLA, CA 96122  
 (916) 832-5571