

SCALE: 1" = 600'

BASIS OF BEARING

THE BASIS OF BEARING IS A SOLAR OBSERVATION TAKEN AT A STATION HAVING A LATITUDE OF 39°43'11" AND A LONGITUDE OF 120°33'37" AND BEARS N53°24'47"W 206 FT. FROM THE N 1/4 CORNER SEC.6.


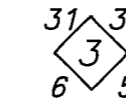
NOTES

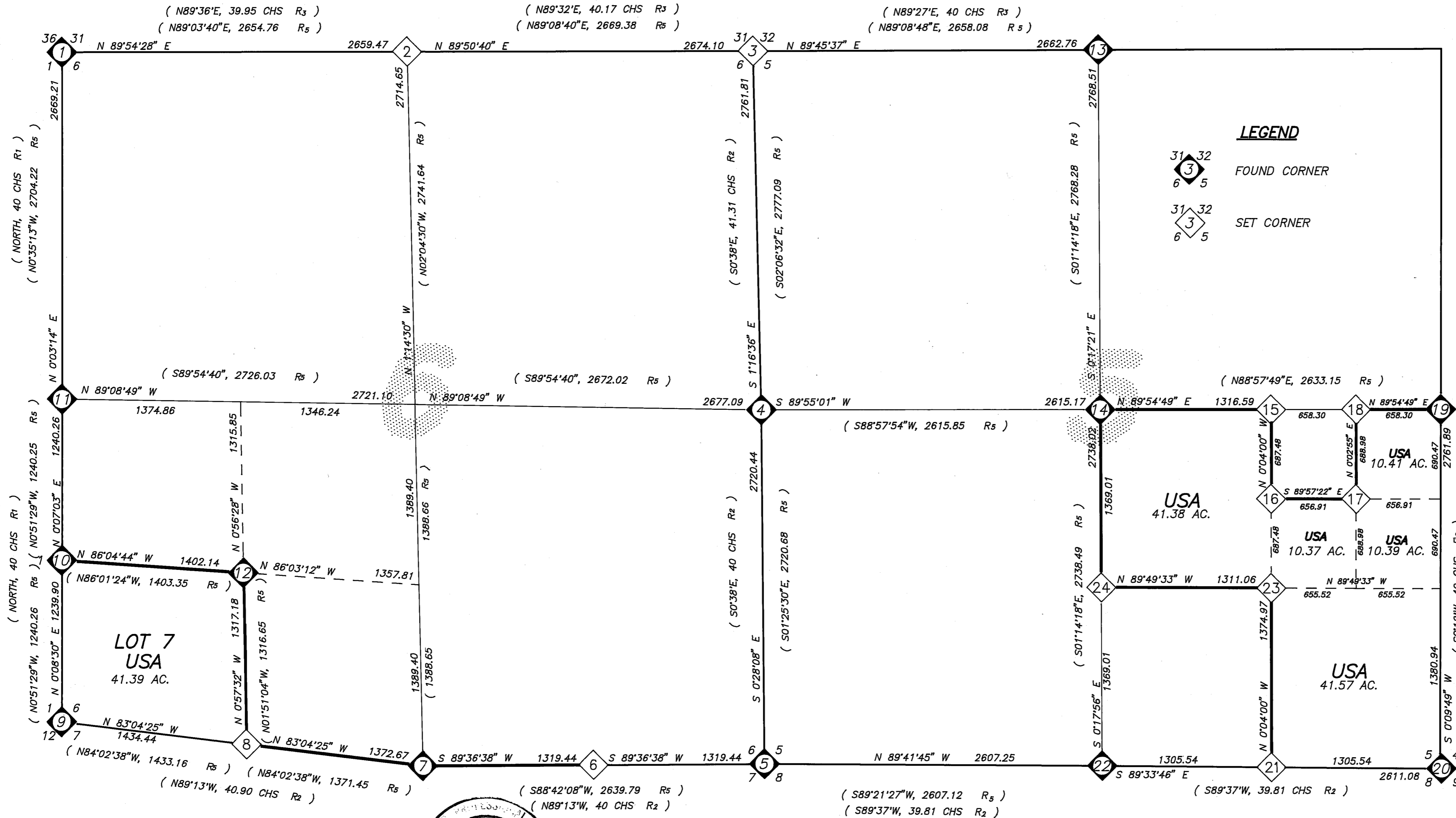
STANDARD USFS MONUMENT IS A 2-1/2" O.D. ALUMINUM PIPE 26" LONG, W/ 3-1/4" O.D. ALUMINUM CAP STAMPED WITH USFS LOGO AND MAGNET UNDER CAP AND A 3-1/4" LONG BY 5" PLASTIC BASE WITH A MAGNET.

STANDARD USFS DRIVE-IN MONUMENT IS A 5/8" O.D. ALUMINUM ROD WITH A 3-1/4" O.D. ALUMINUM CAP STAMPED WITH USFS LOGO.

STANDARD BLM MONUMENT IS A 2-1/2" O.D. STEEL PIPE 28-1/2" LONG WITH A 3-1/4" O.D. BRASS CAP STAMPED WITH BUREAU OF LAND MANAGEMENT LOGO.

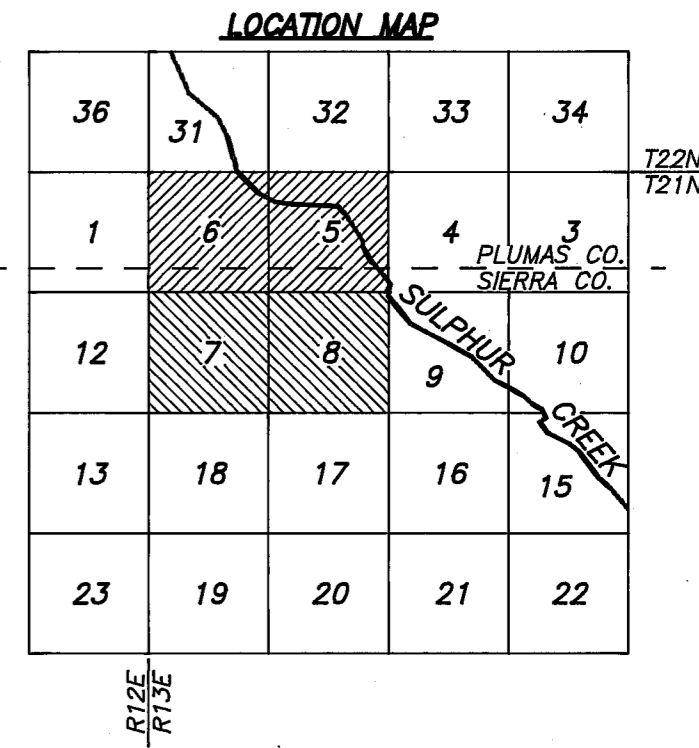
LEGEND

-  FOUND CORNER
-  SET CORNER



SURVEY HISTORY SEC. 5	
R1 1872	A.W. KEDDIE (GLO) NORTH BOUNDARY
R2 1876	L.D. BOND (GLO) EAST, SOUTH, WEST BOUNDARIES
R3 1882	WM. MINTO (GLO) NORTH BOUNDARY
R4 1975	A.M. RAUCH (BLM) E-1/4, SE COR, S-1/4
R5 1981	J.W. HAMBY, LS 2843, NORTH, EAST, SOUTH, WEST BOUNDARIES (5RS142)

SURVEY HISTORY SEC. 6	
R1 1872	A.W. KEDDIE (GLO) NORTH & WEST BOUNDARIES
R2 1876	L.D. BOND (GLO) SOUTH & EAST BOUNDARIES
R3 1882	WM. MINTO (GLO) NORTH BOUNDARIES
R4 1975	A.M. RAUCH (BLM) W-1/4
R5 1981	J.W. HAMBY, LS 2843, NORTH, EAST, SOUTH, WEST BOUNDARIES (6RS63)



SURVEYOR'S STATEMENT AND SURVEY
 This map correctly represents a survey conducted by me or under my direction in conformance with the requirements of the Land Surveyors' Act at the request of William G. Snow in FEB, 1992.
 LICENSE EXP. DATE FEB. 1, 1994
 William G. Snow, L.S. 5623

COUNTY SURVEYOR'S STATEMENT
 This map has been examined in accordance with Section 8766 of the Land Surveyors' Act this 28th day of February, 1992.
 R. Tom Hunter
 R. Tom Hunter R.C.E. 30515
 Plumas County Surveyor
 License Exp. Date 03/31/92

RECORDER'S STATEMENT
 Filed this 11th day of March, 1992 at 11:03 A.M. in Book 9 of Records of Surveys, at page 54-58, at the request of the County Surveyor.
 Fee: \$13.00
 File No: 1835
 Judith Wells
 County Recorder
 By: Sue A. Perry
 Deputy

RECORD OF SURVEY
 LOCATION IN SECTION 5, 6, 7 AND 8 T21N R13E MDM COUNTIES OF SIERRA AND PLUMAS, STATE OF CALIFORNIA FOR THE PLUMAS NATIONAL FOREST.
 SURVEY CREW: R. Knoettgen, H. Stokes, D. Hobbs, L. Gross, J. Schmidt
 DRAWN BY: J. Hartsfield
 SHEET: 1 OF 5