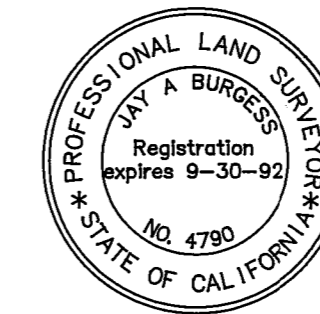


SURVEY NOTES

A thorough search was made for all missing corners. Monuments set were standard aluminum capped aluminum pipes furnish by the Forest Service. Cap & bearing tree markings are in accordance with BLM 1973 MANUAL OF INSTRUCTIONS as described in the Corner Notes. Boundary lines were marked to Forest Service Standards.

SURVEYORS STATEMENT

This map correctly represents a survey made by me or under my direction in conformance with the requirements of the Land Surveyor's Act at the request of W.M. Beaty and Associates in October 1991



Jay Burgess
Jay A. Burgess LS 4790

COUNTY SURVEYOR'S STATEMENT

This map has been examined in accordance with Section 8766 of the Land Surveyor's Act this 6 day of February 1992.



signed R Tom Hunter
R Tom Hunter RCE 30518
Registration expires 3-31-92
Plumas County Surveyor

COUNTY RECORDERS STATEMENT

Filed this 4th day of FEBRUARY 1992 at 2:10 p.m.
in Book 9 of Record of Surveys at Page 46, Plumas County Records, at the request of the County Surveyor

Fee 7.00 signed Judith Wells
Deputy
Judith Wells
Plumas County Recorder

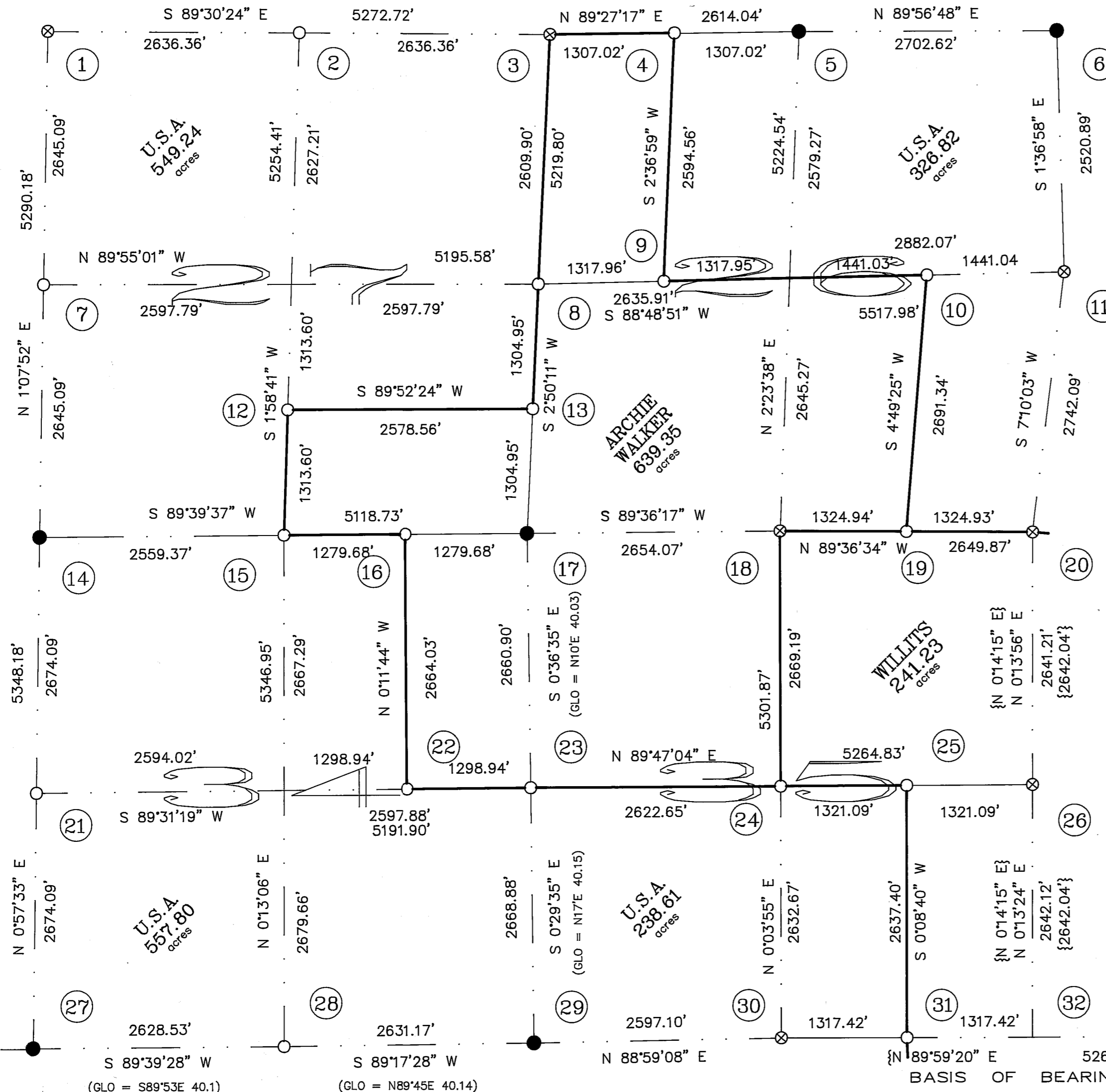
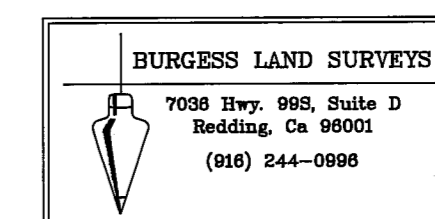
RECORD OF SURVEY
for

ARCHIE WALKER & PLUMAS NATIONAL FOREST

Being Sections 26,27,34 & 35, T27N, R10E, MDM
in the unincorporated territory of Plumas County, California

February 1992

Sheet 1 of 2



SCALE 1" = 1000'

BASIS OF BEARINGS

South line of Sections 35 & 36 between found corners as shown on the map filed in Book 6 of Record of Surveys at Page 62, taken to be N 89°59'20" E.

LEGEND

- ③④ Corner Note Key See Sheet 2 for descriptions
- Found Standard Corner
- ⊗ Remonumented found Corner
- Set ACAP
- { } Data per 6 RS 62

SURVEY HISTORY

- 1869 - Denton D. Brown - S. Bdy of Twp.
- 1874 - A.A. Smith - W. Bdy. & por. Subd. lines
- 1878 - James Branham - Portion of Twp. lines
- 1880 - Milton Santee - Remaining of Subd. lines
- 1945 - Loren Sargent - Subject lines, no record map
- 1965 - Jack E. Larson - Section 35, no record map
- 1970-75 - BLM remonuments certain corners
- 1982 - Stephen H. Schmidt - S.35 & 36 per 6 RS 62