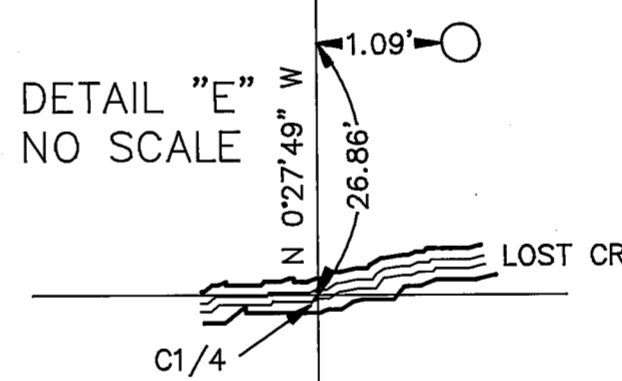
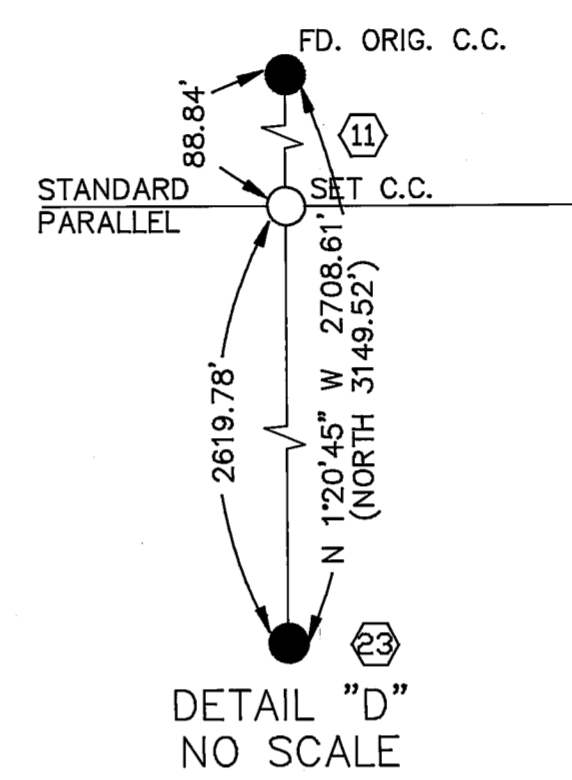


REMONUMENTATION OF ORIG. C.C. FOR PERPETUATION ONLY, NOT CORRECTED TO TRUE STANDARD PARALLEL.

**LEGEND**

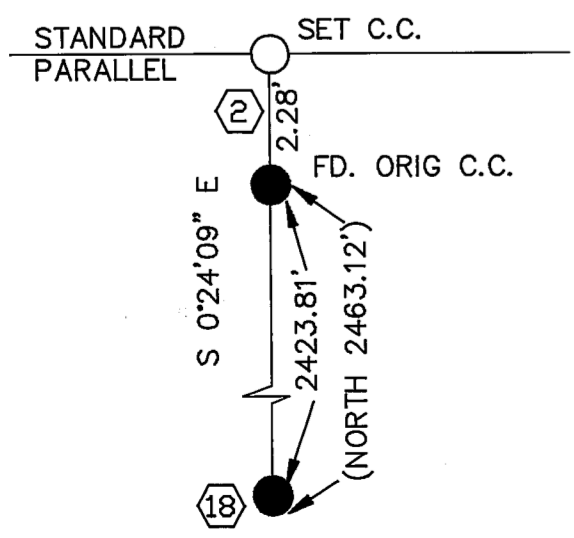
- FOUND CORNER
- SET CORNER
- ⬡ CORNER NUMBER. SEE SHEETS 3 - 5 FOR DESCRIPTIONS
- (~) RECORD BEARING AND DISTANCE (GLO)
- LINE MARKED AND POSTED PER THIS SURVEY
- 'A' SEE LINE TABLE FOR MEASURED BEARING AND DISTANCE
- 'G1' SEE LINE TABLE FOR RECORD (GLO) BEARING AND DISTANCE



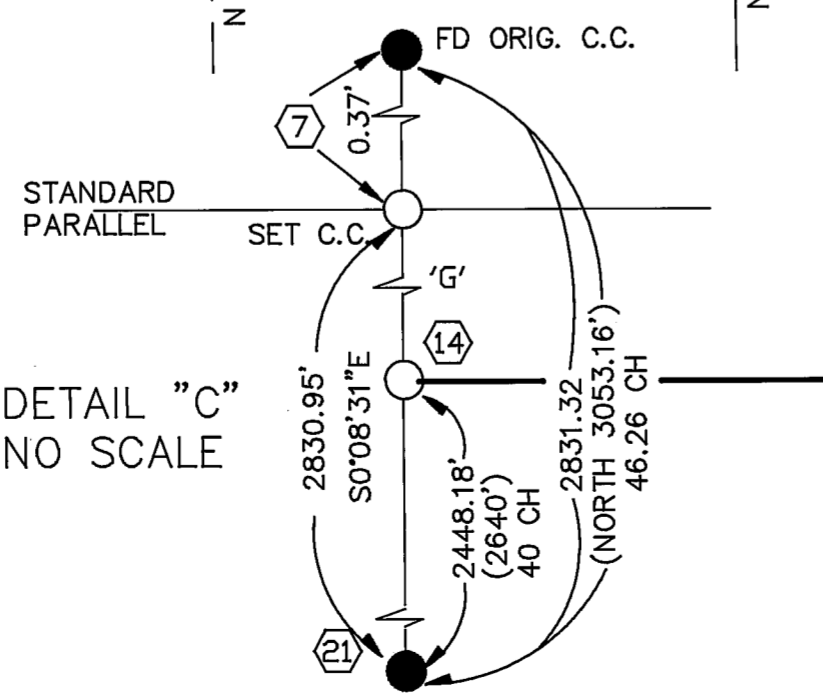
NOTE:  
1/4 COR. 8,9 FALLS IN RESERVOIR. CORNER MAY BE POSSIBLE TO SEARCH AND LOCATE AT VERY LOW WATER. THIS SITUATION WAS NOT PRESENT AT TIME OF SURVEY, CORNER WAS NOT SEARCHED FOR.

MATCH LINE  
SEE SHEET 1

DETAIL "B" NO SCALE



DETAIL "C" NO SCALE



**LINE TABLE**

LINE #	BEARING	DISTANCE
A	N 88°59'51" E	599.50'
B	N 88°59'51" E	329.37'
C	N 88°52'17" E	623.69'
D	N 88°48'57" E	684.93'
E	N 89°21'25" E	646.82'
F	N 89°06'14" E	664.16'
G	S 00°08'41" E	382.77'
H	N 85°24'19" E	1362.50'
I	N 85°24'19" E	1362.50'
J	N 00°14'31" W	563.40'
ORIGINAL GLO CALLS		
G1	EAST	597.96'
G2	EAST	673.20'
G3	EAST	691.68'
G4	NORTH	555.72'

**RECORD OF SURVEY**

FOR  
**USDA FOREST SERVICE**  
IN SECTIONS 4, 5, 8, AND 17 THRU 19  
T20N R8E MDM  
IN THE  
UNINCORPORATED AREAS OF BUTTE & PLUMAS  
COUNTIES, STATE OF CALIFORNIA

**DEL TERRA INC.**  
SURVEYING  
P.O. BOX 4632  
REDDING, CA 96099  
PHONE (916) 241-8050

SCALE: 1" = 1000' DATE: MAY 1991  
SHEET: 2 OF 5