

SURVEYOR'S STATEMENT

THIS MAP CORRECTLY REPRESENTS A SURVEY MADE BY ME OR UNDER MY DIRECTION IN CONFORMANCE WITH THE REQUIREMENTS OF THE LAND SURVEYORS' ACT AT THE REQUEST OF THE USDA FOREST SERVICE IN 1989-1990

SIGNED *Fred W. Cook*
FRED W. COOK, L.S. 3966

COUNTY SURVEYOR'S STATEMENT

THIS MAP HAS BEEN EXAMINED IN ACCORDANCE WITH SECTION 8766 OF THE LAND SURVEYORS' ACT THIS 13TH DAY OF Feb., 1992.

SIGNED *R. Tom Hunter*
PLUMAS COUNTY SURVEYOR
R. TOM HUNTER, R.C.E. 30515
LICENSE EXPIRES 3/31/92

COUNTY RECORDER'S STATEMENT

FILED THIS 13TH DAY OF February, 1992, AT 1:47 PM, IN BOOK 9 OF RECORD OF SURVEYS AT PAGE 40-44, AT THE REQUEST OF THE COUNTY ENGINEER

JUDITH WELLS
PLUMAS COUNTY RECORDER

BY *Jane A. Perry*
DEPUTY

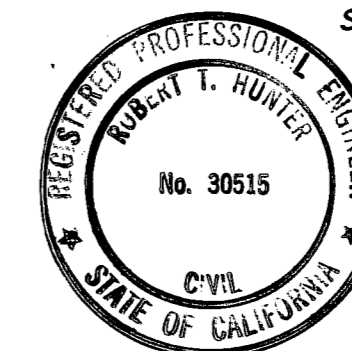
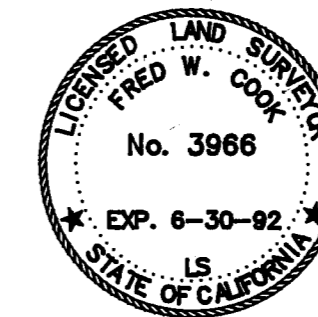
FEE \$ 13.00 FILE NO. 1076

RECORD OF SURVEY

FOR
USDA FOREST SERVICE
IN SECTIONS 4, 5, 8, AND 17 THRU 19
T20N R8E MDM
IN THE
UNINCORPORATED AREAS OF BUTTE & PLUMAS
COUNTIES, STATE OF CALIFORNIA

DEL TERRA INC.
SURVEYING
P.O. BOX 4632
REDDING, CA 96099
PHONE (916) 241-8050

SCALE: 1" = 1000' DATE: MAY 1991
SHEET: 1 OF 5



SEE SHEET 2
MATCH LINE

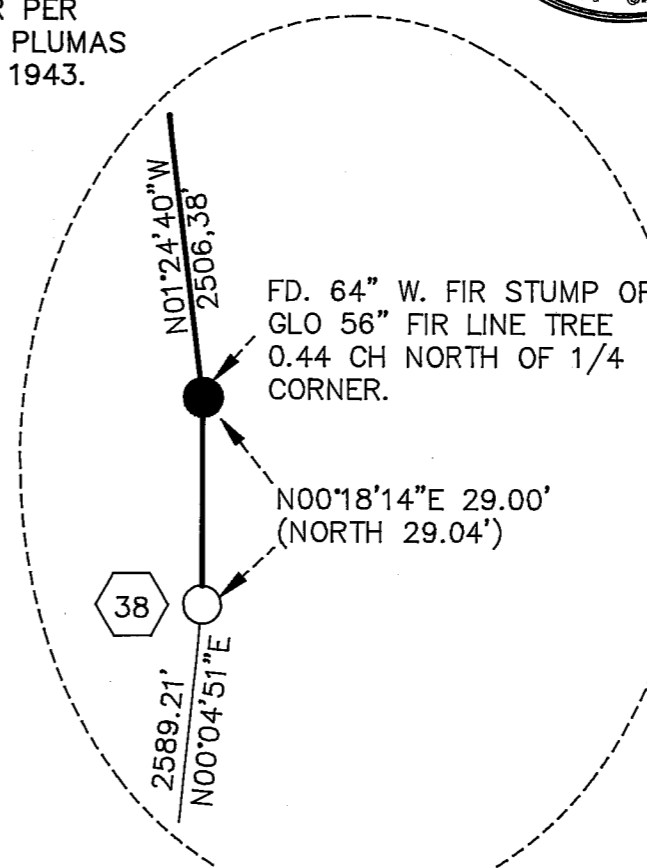
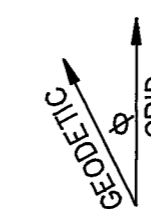
BASIS OF BEARING
DETERMINED BY GPS OBSERVATIONS
BETWEEN CORNERS 19 AND 21 TAKEN
AS N 87°11'46" E

COMBINED FACTOR = 0.99976085

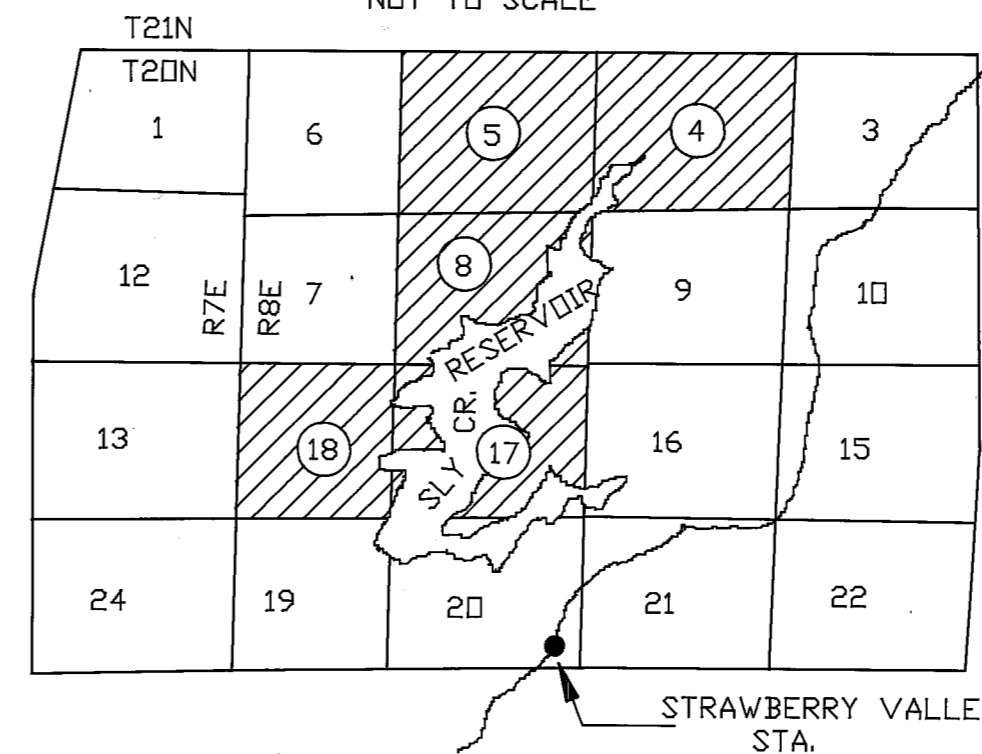
DISTANCES SHOWN ARE GRID, TO
OBTAIN GROUND DIVIDE DISTANCE
SHOWN BY 0.99976085.

BEARINGS SHOWN ARE GRID
BEARINGS, CONVERGENCE ANGLE
(θ) AT COR. # 30 = 0°34'08"

SCALE: 1" = 1000'



VICINITY MAP
NOT TO SCALE



NOTE: BY COMPARING THE E-W SECTION LINES COMMON TO SECTIONS 5 & 8 AND SECTIONS 17 & 20 IT BECAME APPARENT THAT GLO SURVEYOR L. D. BOND WAS RUNNING THESE LINES OUT TO THE 1/4 CORNER FROM THE SECTION CORNER ON THE WEST END OF THE LINE & NOT CONTINUING ON TO THE EAST. THE 1/4 CORNER COMMON TO SECTIONS 8 & 17 BEING DESTROYED BY THE RESERVOIR I CALCULATE THE POSITION FOR SAME BY ONE POINT CONTROL FROM THE WESTERLY SECTION CORNER IN AN ATTEMPT TO FOLLOW AS CLOSELY AS POSSIBLE THE PROCEDURE USED BY THE DEPUTY L.D. BOND. THE DISTANCE USED TO CALCULATE THE POSITION WAS DERIVED BY APPLYING THE COMBINED FACTOR TO THE L. D. BOND'S RECORD DISTANCE. THE BEARING WAS DETERMINED BY ROTATING BOND'S RECORD BEARING TO THIS MAP - HOLDING THE WEST LINE OF SECTION 17.

POSITION OF ORIG. SECTION CORNER PER
USFS EXCHANGE SURVEY # 359 BY PLUMAS
NATIONAL FOREST. SURVEY DATED 1943.

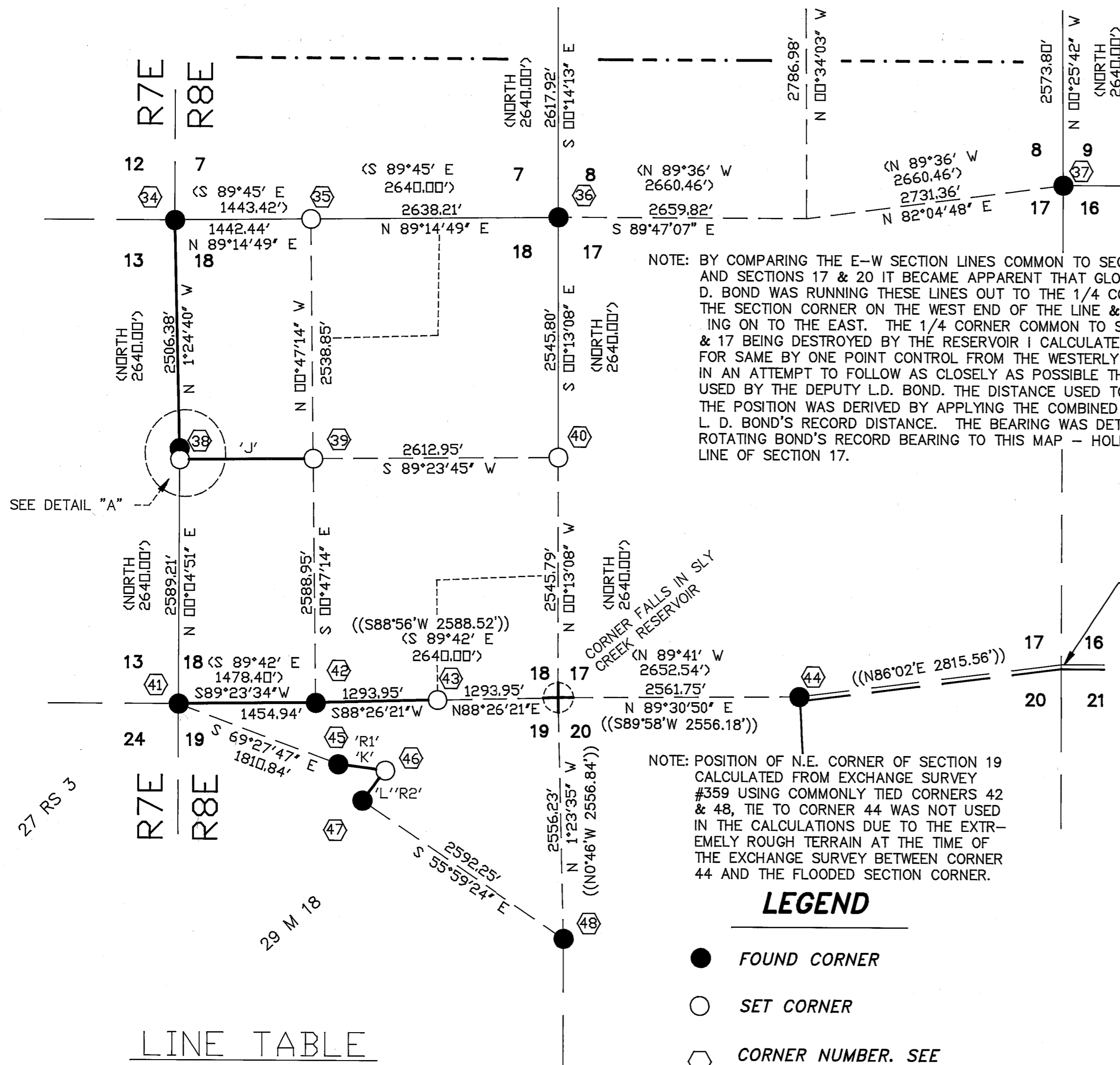
NOTE: POSITION OF N.E. CORNER OF SECTION 19
CALCULATED FROM EXCHANGE SURVEY
#359 USING COMMONLY TIED CORNERS 42
& 48, TIE TO CORNER 44 WAS NOT USED
IN THE CALCULATIONS DUE TO THE EXTREMELY
ROUGH TERRAIN AT THE TIME OF
THE EXCHANGE SURVEY BETWEEN CORNER
44 AND THE FLOODED SECTION CORNER.

LEGEND

- FOUND CORNER
- SET CORNER
- ⬡ CORNER NUMBER. SEE SHEETS 3 - 5 FOR DESCRIPTIONS
- (~) RECORD BEARING AND DISTANCE (GLO)
- ((~)) RECORD PER EXCHANGE SURVEY NO. 359
- LINE MARKED AND POSTED PER THIS SURVEY
- 'A' SEE LINE TABLE FOR MEASURED BEARING AND DISTANCE
- 'R1' SEE LINE TABLE FOR RECORD (USFS) BEARING AND DISTANCE

LINE TABLE

LINE #	BEARING MEASURED	DISTANCE
J	N 89°23'45" E	1415.71'
K	S 82°25'37" E	504.78'
L	S 37°10'23" W	398.88'
RECORD PER ES #359		
R1	S 81°55' E	504.90'
R2	S 37°41' W	398.97'



SEE DETAIL "A"

27 RS 3

29 M 18