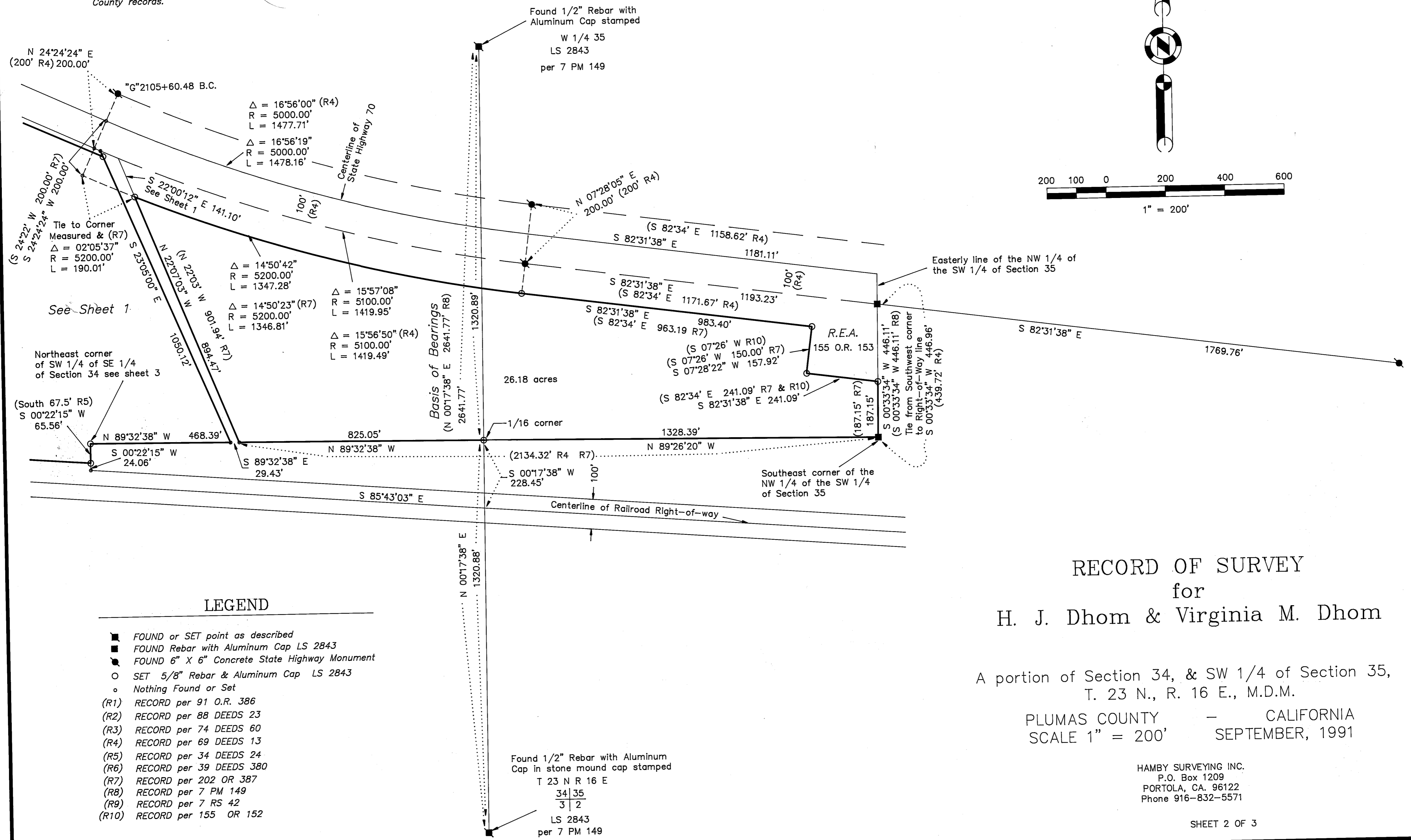
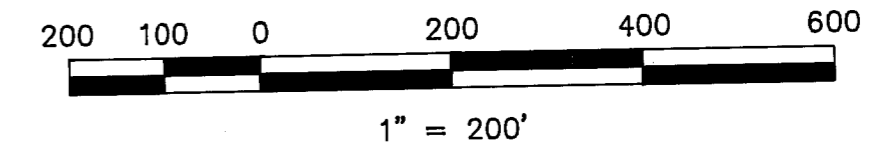


Basis of Bearings

The Basis of Bearings of this map is the West line of the SW 1/4 of Section 35 shown as S 00°17'38" W per 7 PM 149, Plumas County records.



See Sheet 1

Northeast corner of SW 1/4 of SE 1/4 of Section 34 see sheet 3

LEGEND

- FOUND or SET point as described
- FOUND Rebar with Aluminum Cap LS 2843
- FOUND 6" X 6" Concrete State Highway Monument
- SET 5/8" Rebar & Aluminum Cap LS 2843
- Nothing Found or Set
- (R1) RECORD per 91 O.R. 386
- (R2) RECORD per 88 DEEDS 23
- (R3) RECORD per 74 DEEDS 60
- (R4) RECORD per 69 DEEDS 13
- (R5) RECORD per 34 DEEDS 24
- (R6) RECORD per 39 DEEDS 380
- (R7) RECORD per 202 OR 387
- (R8) RECORD per 7 PM 149
- (R9) RECORD per 7 RS 42
- (R10) RECORD per 155 OR 152

RECORD OF SURVEY  
 for  
 H. J. Dhom & Virginia M. Dhom

A portion of Section 34, & SW 1/4 of Section 35,  
 T. 23 N., R. 16 E., M.D.M.  
 PLUMAS COUNTY — CALIFORNIA  
 SCALE 1" = 200' SEPTEMBER, 1991

HAMBY SURVEYING INC.  
 P.O. Box 1209  
 PORTOLA, CA. 96122  
 Phone 916-832-5571