

NOTES AND LEGEND

- ① FOUND A 1" IRON PIPE SET IN A MOUND OF STONES IN A FENCE LINE WITH A RE 292 WASHER PER 5 R/S 147 (RECORD STATES A 3/4" PIPE WAS SET). A 22" PONDEROSA PINE BEARS S 30° E, 10.4', AND A 16" PONDEROSA PINE BEARS N 1/2 30° E, 13.55'.
- ② FOUND A 2 1/2" ALUMINUM CAP SET FLUSH WITH THE GROUND ON THE WEST SIDE OF THE PLUMAS COUNTY FAIRGROUNDS ROAD IN A FENCE CORNER MARKED: "USFS CADASTRAL SURVEY T24N S13 S18 R9E R10E S24 S19 LS 4976 1985" PER 7 R/S 50. A 5/8" ALUMINUM ROD WITH A 3 1/2" ALUMINUM CAP BEARS N 43° E 5.0' AND S 44° 30' E 5.0', MARKED: "RM".
- ③ FOUND A WOODEN POST 6' HIGH WITH 3-6" SIDES WITH LOCATION TAGS AND A "RCE 22836" BRASS TAG PER 7 R/S 50. Fd. 9/8" ALUMINUM ROD w/ 3/4" CAP N 32° 15' W, 2' & S 36° W, 1.7'. See 7 R/S 50.
- ▲ SET A 30" X 1/2" COPPER PIPE WITH A 1 1/2" BRASS CAP STAMPED "LS 5317" AT THE POSITIONS SHOWN ON THIS SURVEY.
- MONUMENTS FOUND AND FIELD TIED, AND DESCRIBED ON THIS SURVEY
- CORNER POSITIONS CALCULATED FROM OTHERS ON THIS SURVEY
- 1 Maps: 2B (Lot 6)
- 5 RS 91
- 9 PM 32 - NOT USED TO SUBDIVIDE SECTION (INFORMATION ONLY)
- 1 PM 51 - NOT USED TO SUBDIVIDE SECTION (INFORMATION ONLY)
- 5 RS 147
- 7 RS 50 - NOT USED TO SUBDIVIDE SECTION (RECORD MONUMENTS USED TO BASE THE BASIS OF BEARING)

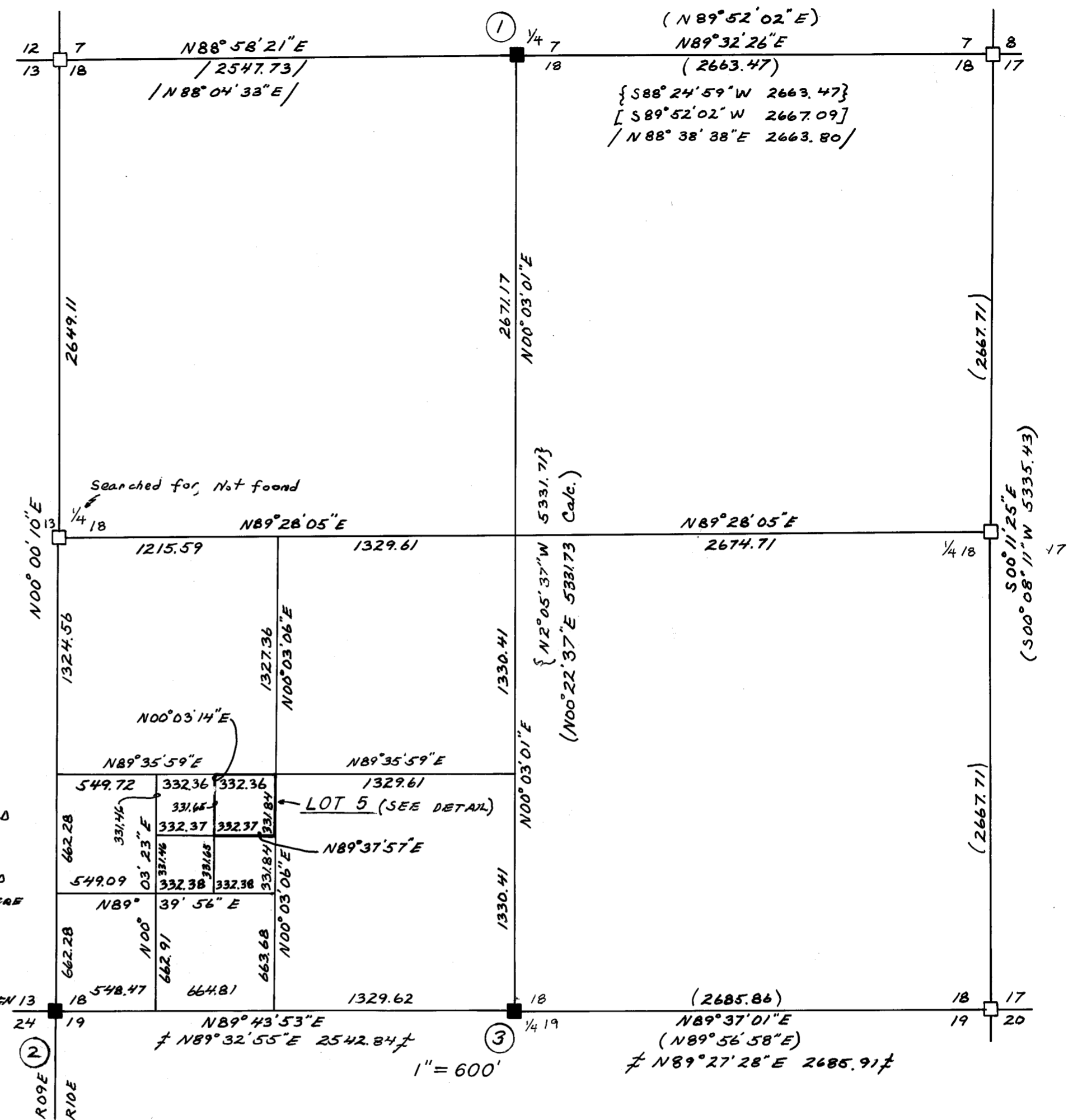
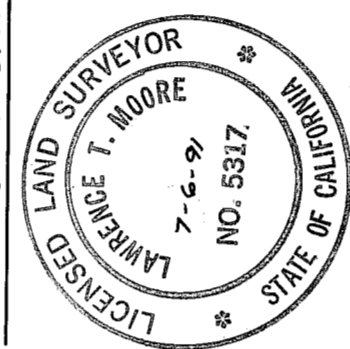
BASIS OF BEARING IS 84.7 RS 46 50. TIES TO FOUND MONUMENTS AT THE SECTION CORNER TO SECTIONS 13-18, 19-24 AND THE 1/4 CORNER TO SECTIONS 18 & 19, ROTATED 00° 10' 58" CLOCKWISE TO BEAR 264 OR 147 E 230 OR 366.

SCALE AS SHOWN

SURVEYOR'S STATEMENT
THIS MAP CORRECTLY REPRESENTS A SURVEY MADE BY ME OR UNDER MY DIRECTION IN CONFORMANCE WITH THE REQUIREMENTS OF THE LAND SURVEYOR'S ACT AT THE REQUEST OF GEORGE COULTER IN JULY, 1991.

Lawrence J. Brock
LAWRENCE T. MOORE LS 5317

LIC. EXP. 12.31.91



DIMENSION OF LOT 5 IS BASED ON THE SUPPLEMENTAL PLAT OF SECTION 18, T24N R10E MDM DATED JANUARY 18, 1960. BREAK-DOWN OF SECTION 18 BASED ON FIELD TIES TO CORNERS SHOWN AND ON RECORD DATA ROTATED TO THIS SURVEY. ONLY THE INDICATED SURVEYS WERE USED, THE OTHERS ARE SHOWN FOR INFORMATION ONLY.

CORNERS 1, 2 & 3 ARE FIXED FROM MY FIELD SURVEY. THE NE, EAST, AND SE SECTION CORNERS WERE CALCULATED FROM 5 RS 91, ROTATED 00° 19' 36" COUNTERCLOCKWISE, BASED ON TIE BETWEEN THE N & S 1/4 CORNERS. THE NW SECTION CORNER WAS CALCULATED FROM 5 RS 147, ROTATED 00° 52' 40" CLOCKWISE, BASED ON CALCULATED BEARING BETWEEN 13 THE NE SECTION CORNER AND THE N 1/4 CORNER.

COUNTY RECORDER'S STATEMENT FILED THIS 22ND DAY OF October, 1991 AT 9:15 AM IN BOOK 9 OF RECORD OF SURVEYS, AT PAGE 28 AT THE REQUEST OF THE COUNTY ENGINEER.

JUDITH WELLS
COUNTY RECORDER

FEE \$ 6.00
FILE NO. 8524 BY: Ruth Cammack DEPUTY

- ④ 1/2" IRON PIPE WITH A YELLOW PLASTIC CAP MARKED "RCE 11173" SET IN A FENCE CORNER, NOT OF RECORD
- ⑤ 3" OCTAGON BRASS CAP MARKED: "PACIFIC GAS & ELECTRIC CO #1 PC EL 3467.14 LS 2750" SET FLUSH WITH GROUND, NOT OF RECORD
- ⑥ 3" BRASS CAP SET FLUSH WITH CONCRETE IN A FENCE CORNER MARKED: "PACIFIC GAS & ELECTRIC CO #4 PC LS 5050". NOT OF RECORD.

COUNTY SURVEYOR'S STATEMENT THIS MAP HAS BEEN EXAMINED IN ACCORDANCE WITH SECTION 8786 OF THE LAND SURVEYOR'S ACT THIS 22ND DAY OF October, 1991.

Lawrence J. Brock
by Roman Smith RCE 30515
LAWRENCE J. BROCK RCE 13528

LIC. EXP 3/31/93

RECORD OF SURVEY FOR SIERRA PACIFIC INDUSTRIES

A PORTION OF SECTION 18, T24N, R10E M.D.M. COUNTY OF PLUMAS, STATE OF CALIFORNIA JUNE, 1991 SCALE AS SHOWN

LAWRENCE T. MOORE SURVEYING
19050 HOLLOW LANE
REDDING, CALIFORNIA 96003
PH. (916) 243-6634 LS 5317