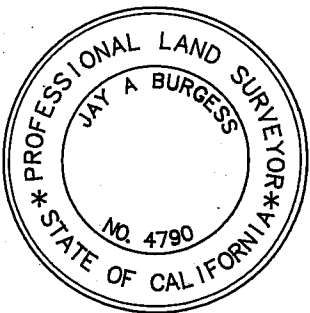


SURVEYORS STATEMENT

This map correctly represents a survey made by me or under my direction in conformance with the requirements of the Land Surveyor's Act at the request of Lassen National Forest.



Jay Burgess
Jay Burgess LS 4790
Registration expires 9-30-92

COUNTY SURVEYOR'S STATEMENT

This map has been examined in accordance with Section 8766 of the Land Surveyor's Act this 19th day of September 1991

signed *Lawrence J. Brock*
Lawrence J. Brock R.C.E. 13528
Registration expires 3-31-93

COUNTY RECORDERS STATEMENT

Filed this 19th day of September 1991 at 3:27 p.m.
in Book 9 Record of Surveys at Page 26, Plumas County
Records at the request of the County Engineer.

Fee \$5⁰⁰
File No 7320

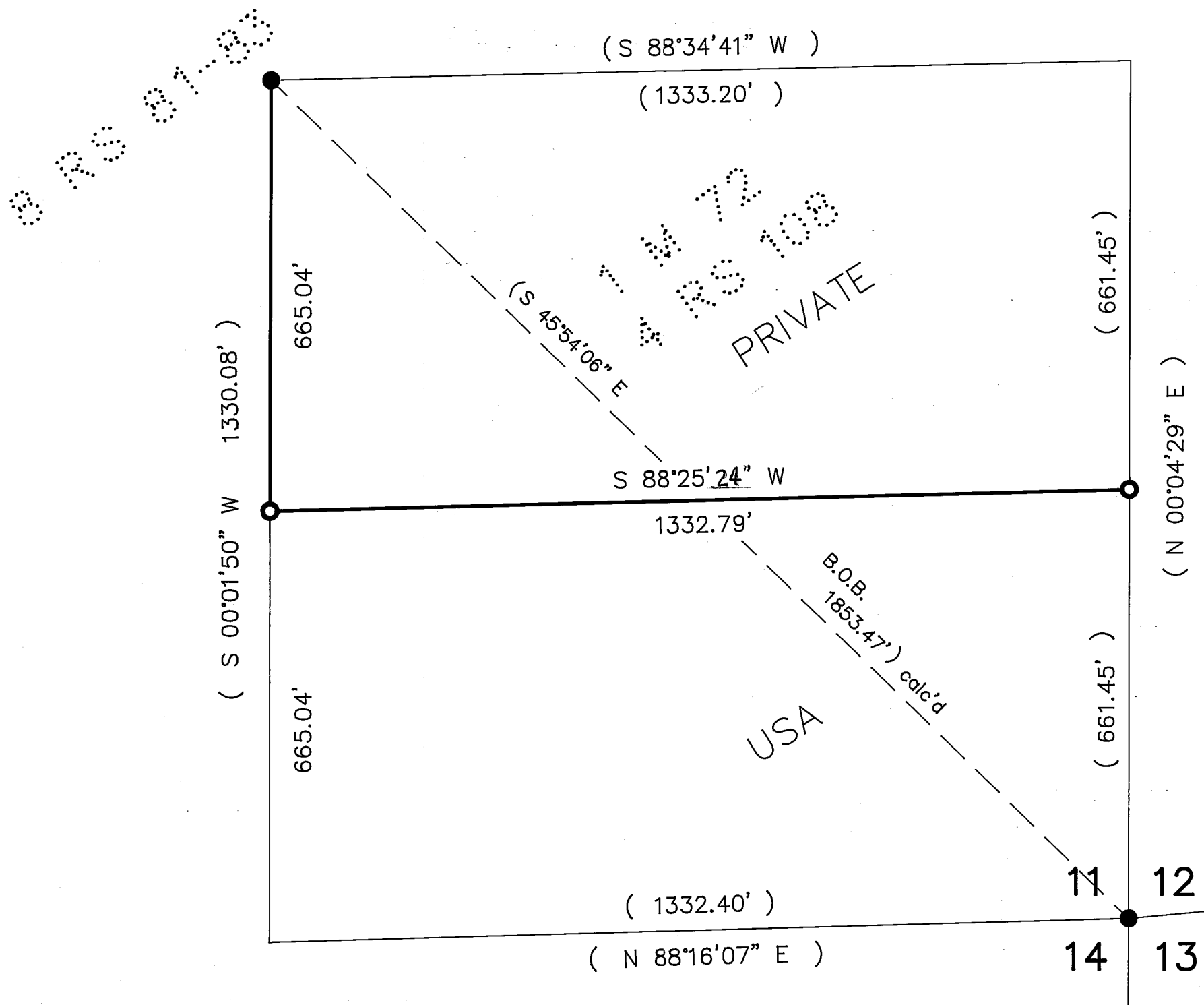
signed *Judith Wells*
Deputy
Judith Wells
County Recorder

RECORD OF SURVEY
FOR
LASSEN NATIONAL FOREST

In the SE 1/4 of the SE 1/4 of Section 11, T.27 N., R.7 E.,
MDM, Plumas County, California.



8 Aug 1991
Sheet 1 of 1



Scale 1"=200'

LEGEND

- Found monument as noted
- Set USFS monument as described in corner notes.
- () Data per 8 RS 81-83 and measured.

CORNER NOTES

C-S-SE
1/4
S11
LS 4790
1991

Set 2.5" USFS alum. mon. w/3.25" cap in mound of stone
Marked new BTs: 19" Ponderosa pine S67°E 63.5'
19" Ponderosa pine S2°E 34.9'

S-S
1/4
S11 | S12
LS 4790
1991

Set 2.5" USFS alum. mon. w/3.25" cap in mound of stone
Marked new BTs: 27" White Fir N15°W 46.7'
12" Sugar pine S58°W 36.9'

SE 1/16
S11
LS 4790
1988

Fd USFS alum mon in mound of stone
and BTs per 8 RS 81-83:
49" White fir S58°W 17.1'
19" White fir South 16.9'

T27N R7E
S11 | S12
S14 | S13
LS 3202
1976

Found BCIP in mound of stone and BTs
per 8 RS 81-83: 17" White fir N85°E 34.3'
21" Ponderosa pine S6°E 31.7'
25" Incense cedar S68°W 60.7'
17" White fir N50°W 23.6'