

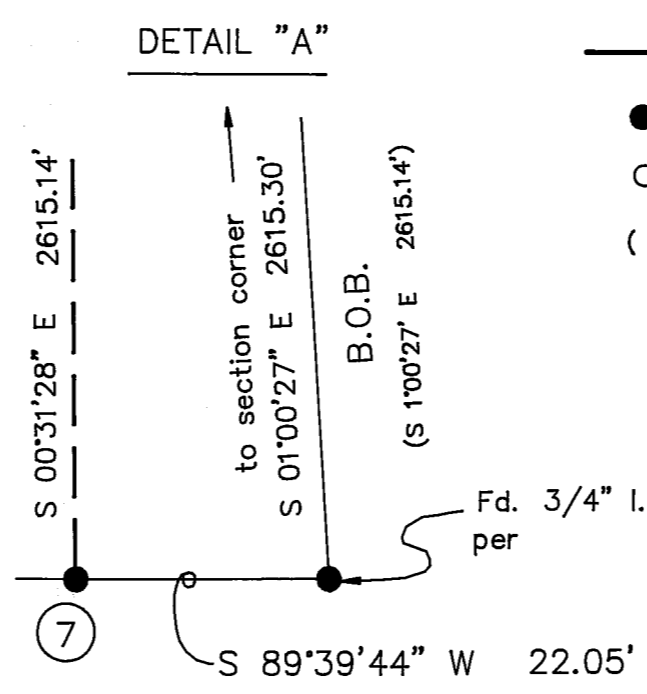
**CORNER NOTES**

- ① T29N R7E  
1 S27  
4 S34  
1975  
Fd. BLM BCIP in amos and BT's:  
21" W.FIR N18°30'E 15.5'  
19" W.FIR N13°E 9.9' (snag)  
Mk'd new BT 11" I. Cedar S60°W 9.9'
- ② T29N R7E  
S27|S26  
S34|S35  
1975  
Fd. BLM BCIP in amos and BT's:  
15" W.Fir N73°W 32.0'  
17" W.Fir S63°W 64.0'  
17" Sugar Pine N83°E 21.8'  
11" W.Fir S34°30'E 62.0'
- ③ N-N  
1  
64  
S34 S35  
LS 4790  
1991  
Set USFS ACAP in amos and mk'd BTs:  
6" I. Cedar N21°45'W 3.2'  
13" Cedar S58°E 13.1'
- ④ C-N-NE  
1/64  
S34  
LS 4790  
1991  
Set USFS ACAP in amos and mk'd BTs:  
12" W.Fir S66°E 26.6'  
12" W.Fir S42°W 20.4'
- ⑤ NE 1/16  
S34  
LS 4790  
1991  
Set USFS ACAP in amos and mk'd BTs:  
15" W.Fir N84°30'W 14.6'  
6" W.Fir S21°W 17.1'
- ⑥ Fd. 3/4" iron pipe tagged LS 2322  
and BT per 1 RS 139 :16" Sugar Pine N89°E 14.1'
- ⑦ 1/4 34|35  
Fd. 15"x12"x12" stone mk'd 1/4  
Fd. Pine snag S87°E 13.9' (GLO N35°W Note:  
GLO notes have bearings reversed between trees)  
Set 5/8" R/C mk'd LS 4790  
Mk'd 10" Sugar Pine N82°E 40.8'  
3/4" iron pipe tagged LS 2322 per 1 RS 139  
bears N89°39'44"E 22.05'

**BASIS of BEARING**  
The bearing (S 1°00'27" E) between  
found monuments as shown per 1 RS 139

**LEGEND**

- Found as noted
- Set as noted
- ( ) Record data per 1 RS 139



**SURVEYORS STATEMENT**

This map correctly represents a survey made by me or under my direction in conformance with the requirements of the Land Surveyor's Act at the request of Roseburg Resources Inc.



*Jay Burgess*  
Jay Burgess LS 4790  
Registration expires 9-30-92

**COUNTY SURVEYOR'S STATEMENT**

This map has been examined in accordance with Section 8766 of the Land Surveyor's Act this 9TH day of SEPTEMBER 1991

signed *Lawrence J. Brock*  
Lawrence J. Brock R.C.E. 13528  
Registration expires 3-31-93

**COUNTY RECORDERS STATEMENT**

Filed this 9TH day of SEPTEMBER 1991 at 2:15 pm.  
in Book 9 Record of Surveys at Page 23, Plumas County  
Records at the request of the County Engineer.

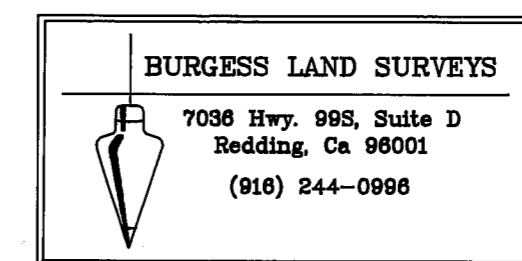
Fee \$ 5.00

signed *Judith Wells*  
Deputy  
Judith Wells  
County Recorder

File No 6921

**RECORD OF SURVEY**

FOR  
Roseburg Resources Inc.  
and Lassen National Forest  
in the NE 1/4 of Section 34 T29N R7E MDM  
in the unincorporated territory of Plumas County, California.



July 1991  
Scale 1" = 500'  
Sheet 1 of 1