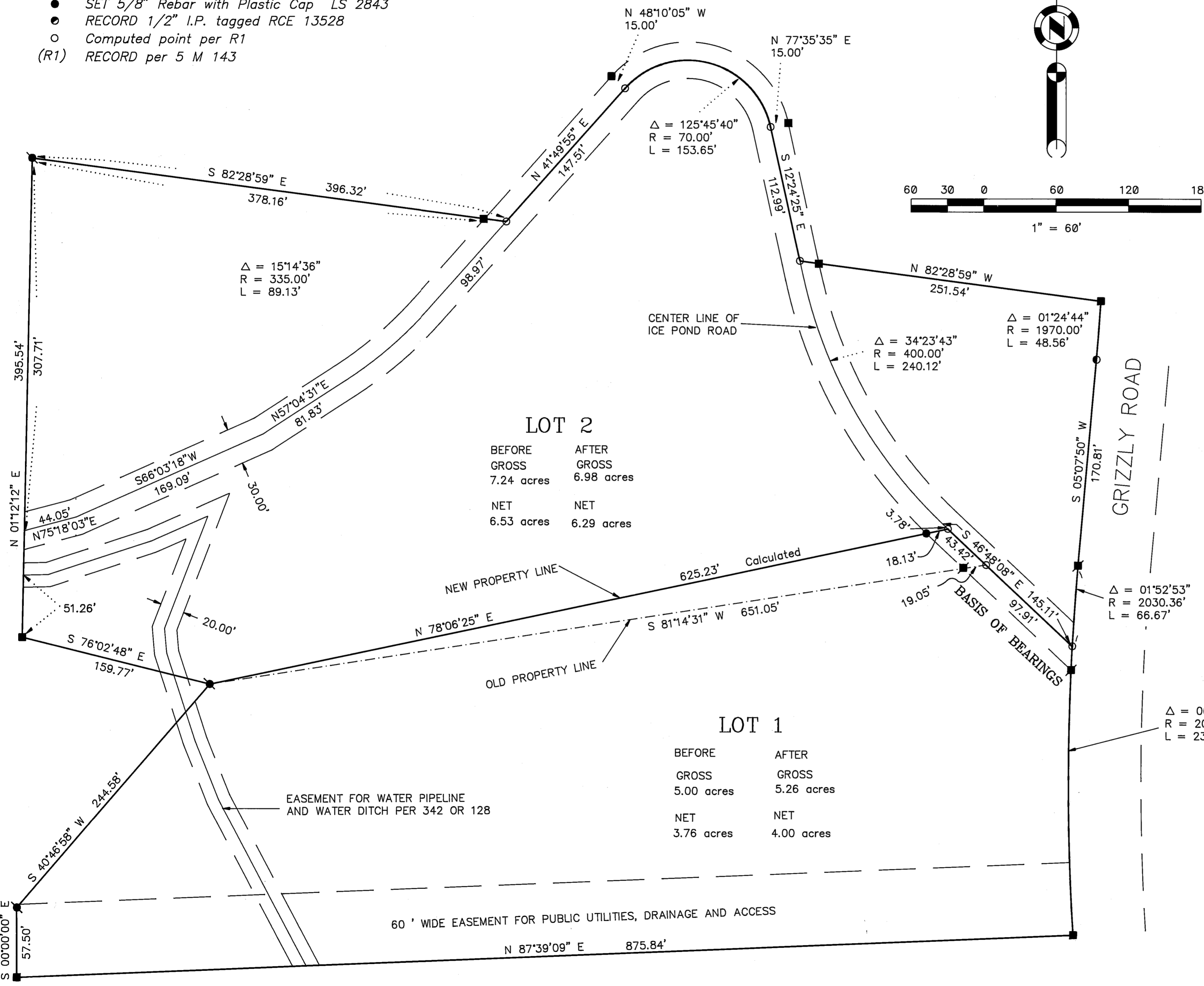


LEGEND

- FOUND 1/2" Rebar with Plastic Cap RCE 13225
- RECORD 1/2" Rebar with Plastic Cap RCE 13225
- RECORD 1/2" Rebar with Aluminum Cap LS 2843
- SET 5/8" Rebar with Plastic Cap LS 2843
- RECORD 1/2" I.P. tagged RCE 13528
- Computed point per R1
- (R1) RECORD per 5 M 143

NOTE:

All Bearings, Distances and Curve Data shown are record per 5 M 143 unless shown otherwise.



LOT 2

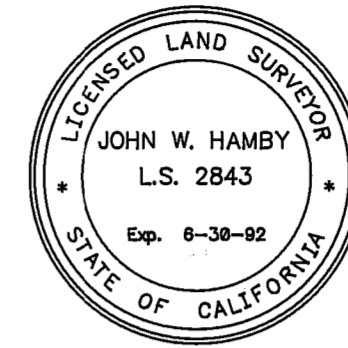
BEFORE	AFTER
GROSS	GROSS
7.24 acres	6.98 acres
NET	NET
6.53 acres	6.29 acres

LOT 1

BEFORE	AFTER
GROSS	GROSS
5.00 acres	5.26 acres
NET	NET
3.76 acres	4.00 acres

SURVEYOR'S STATEMENT

This map correctly represents a survey made by me or under my direction in conformance with the requirements of the Land Surveyors' Act at the request of Ramelli Investment Group in December, 1990.



John W. Hamby
John W. Hamby LS 2843

COUNTY SURVEYOR'S STATEMENT

This map has been examined in accordance with Section 8766 of the Land Surveyors' Act this 1st day of April, 1991.

Lawrence J. Brock
Lawrence J. Brock RCE 13528
PLUMAS COUNTY SURVEYOR
License Expires 3/31/93

RECORDER'S STATEMENT

Filed this 1st day of April, 1991, at 9:21 a.m. in Book 9 of Record of Surveys, at page 2, at the request of the County Engineer.

Fee \$500
File No. 2080

Judith Wells
County Recorder
by *Jane A. Gray*
Deputy

NOTE

This Record of Survey was prepared to reflect a Lot Line Adjustment for which a resolution is Recorded in Book 541 of Official Records at Page 74.

BASIS OF BEARINGS

The Basis of Bearings of this Map is the Southerly Right of Way line of Ice Pond Road taken between points indicated and shown as N 46°48'08" W per 5 M 143 Plumas County records.

RECORD OF SURVEY
for
RAMELLI INVESTMENT GROUP
LOTS 1 & 2, RIVER VALLEY SUBDIVISION
UNIT NO. 2

A portion of Sections 20 and 21
T. 23 N., R. 14 E., M.D.M.
PLUMAS COUNTY — CALIFORNIA
SCALE 1" = 60" DEC. 1990

HAMBY SURVEYING INC.
P.O. Box 1209
PORTOLA, CA. 96122
Phone 916-832-5571