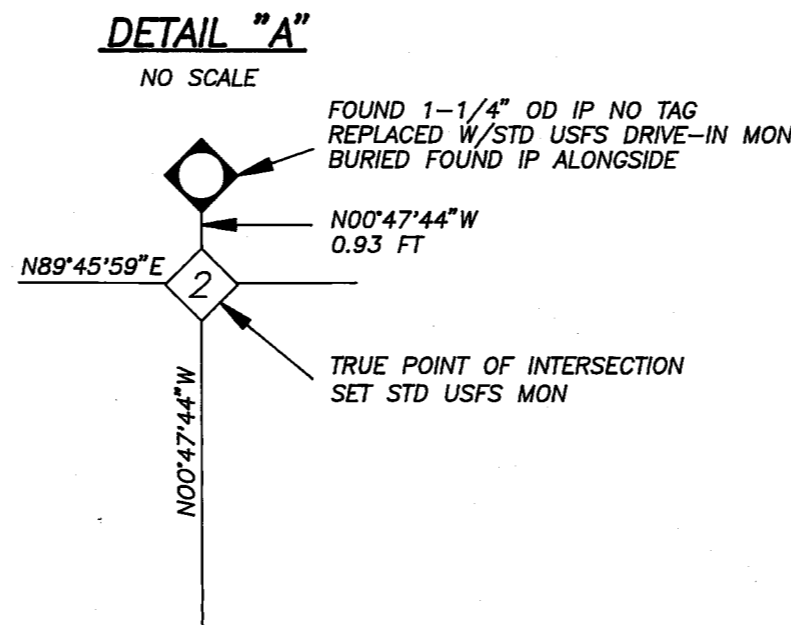


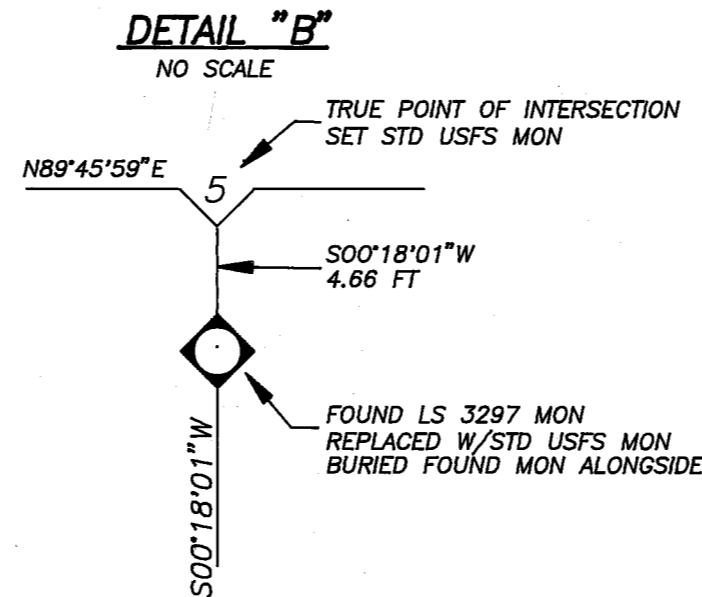
19
T25N R12E
C1/4 S6

19
RECORD: NOTHING SET (GLO)
FOUND: NOTHING
SET: NOTHING SET CALCULATED POINT ONLY



20
T25N
R11E R12E
S12 S7
S13
LS 5623
1987

20
RECORD: FIR POST 48X4X4 IN IN A STONE MOUND (GLO)
FWB: 36 IN DIA N31-1/2°W 48 LKS DIST.
PP 18 IN DIA N43°W 117 LKS DIST.
PP 30 IN DIA S68-1/2°E 90 LKS DIST.
PP 36 IN DIA S19-1/2°E 21 LKS DIST.
FOUND: 18"X18"X4" MOS (GLO)
FWB: 41" PP SNAG N31°58'E 33.0 FT (50 LKS) SCRIBING VISIBLE (GLO)
28" IC N42°47'W 78.3 FT (119 LKS) CLOSED FACE (ASSUMED GLO)
37" PP S68°47'W 80.4 FT (92 LKS) CLOSED FACE (ASSUMED GLO)
STUMP HOLE S19°54'E 14.1 FT (21 LKS) OLD LOG LAYING ALONGSIDE (ASSUMED GLO)
SET: STD USFS MON 10" AG IN 36"X36"X10" MOS
FWB: 15" DF S47°08'11"E 42.3 FT SCRIBED
"T25NR12ES7BT"



21
T26N
R11E R12E
S36 S31
LS 5623
1988

21
RECORD: 4"X4" POST IN MOS (GLO)
FWB: 8" DIA OAK N65°E 54 LKS DIST.
FOUND: 2" OD IP W/ 2-1/2" DIA CAP MARKED "W 1/4 31" (UNKNOWN ORIGIN) 12" AG IN A 36"X36"X12" MOS
FWB: 20" BO N78°E 36.5 FT (55 LKS) W/1946, 1958 & 1969 KTAGS (ASSUMED GLO)
SET: REPLACED FOUND MON W/STD USFS DRIVE-IN MON 8" AG IN A 36"X36"X8" MOS BURIED FOUND MON ALONGSIDE

22
T26N R12E
1/4 S 30
S 31
LS 5623
1988

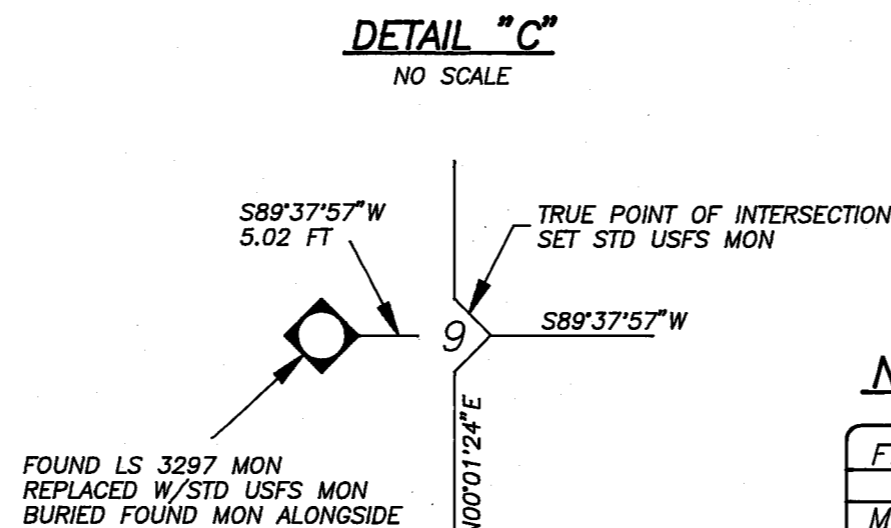
22
RECORD: 15"X12"X7" STONE IN MOS 4' DIA BY 2' HIGH (GLO)
FOUND: 1-1/2" OD IP W/1-1/2" ALUM TAG RCE 11128 13" AG IN A 36"X36"X8" MOS (3RS146)
FWB: 8" BO N48°E 12.4 FT (3RS146)
22" PP S16°W 19.0 FT (3RS146)
11" PP S48°E 24.2 FT (3RS146)
SET: REPLACED FOUND MON W/STD USFS DRIVE-IN MON W/24" OF ROD 8" AG IN A 36"X36"X6" MOS BURIED FOUND MON ALONGSIDE

23
WULFERT
1/4
S31 S32
LS 4342

23
RECORD: STONE 40"X18"X3" SET IN MOS 4' IN DIA AND 2' HIGH (GLO)
FWB: 12" DIA OAK N38°E 30 LKS.
17" DIA OAK N27°W 138 LKS.
FOUND: 1/2" REBAR W/1-1/2" ALUM CAP LS4342 (5RS7) W/STONE 36"X18"X3" ALONGSIDE IN A 4' DIA 18" HIGH MOS (GLO)
FWB: 16" BO HOLLOW STUMP N26°E 21.0 FT W/ 2 K-TAGS (ASSUMED GLO)
26" DIA HOLLOW OAK LOG N27°W 91 FT. (ASSUMED GLO)
SET: NOTHING AT CORNER LOCATION
FWB: 4" BO N14°07'W 34.7 FT. SCRIBED "1/4 S31 BT"
20" PP S70°43'E 24.2 FT. SCRIBED "1/4 S32 BT"

24
T26N R12E
C1/4 S31
LS 5623
1988

24
RECORD: NOTHING (GLO)
FOUND: NOTHING
SET: STD USFS MON ON 24" OF ROD 8" AG IN 36"X36"X8" MOS
FWB: STD USFS DRIVE-IN MON N21°40'50"W 109.93 FT (REFERENCE MONUMENT)
STD USFS DRIVE-IN MON S89°03'42"W 307.28 FT (REFERENCE MONUMENT)



NONSTANDARD ABBREVIATIONS

FWB	FROM WHICH BEARS
BT	BEARING TREE
MOS	MOUND OF STONE
AG	ABOVE GROUND
JN	JUNIPER
DF	DOUGLAS FIR
WF	WHITE FIR
RF	RED FIR
PP	PONDEROSA PINE
SP	SUGAR PINE
JP	JEFFREY PINE
IC	INCENSE CEDAR
MON	MONUMENT
RM	REFERENCE MONUMENT



United States Department of the Interior

BUREAU OF LAND MANAGEMENT
California State Office
2800 Cottage Way, Room E-2845
Sacramento, California 95825-1889

MAY 14 1993



9600
T25626NR12EM
(CA 942.15)

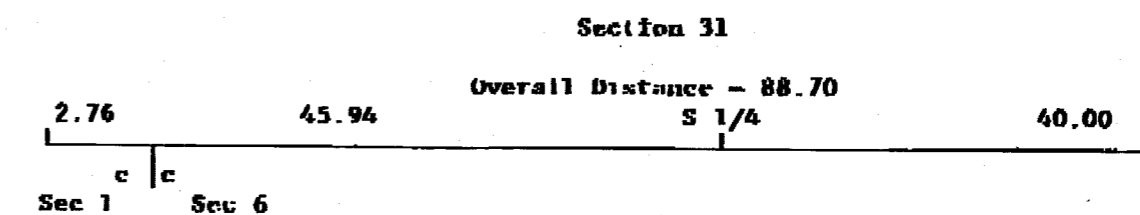
Mr. William C. Snow
Forest Land Surveyor
Plumas National Forest
159 Lawrence Street
Post Office Box 11500
Quincy, California 95971 6025

Dear Mr. Snow,

This is in response to your letter dated May 4, 1993, concerning the record distance to be used in proportioning in the lost south quarter corner of section 31, T. 26 N., R. 12 E., M.D.M.

The pertinent plats were approved May 4, 1880 (T. 26 N.), and May 12, 1881 (T. 25 N.). From examining these plats, it is apparent that for the line between sections 6 and 31, the section corners and the 1/4, 1/16 and lower order corners are offset.

The 1881 resurvey (by Minto) found the 1/4 section corner of section 31, which had been set by the 1880 survey (Branham). Therefore, you would use the 1881 resurvey (by Minto) overall record distance for proportioning in the south quarter corner of section 31, as shown below:



If you should have any questions regarding this letter, please feel free to contact me at (916) 978-4775, or Larry Jepsen of my staff at (916) 978-4779.

Sincerely,
Clifford A. Robinson
Clifford A. Robinson
Chief, Branch of
Cadastral Survey

RECORD OF SURVEY

LOCATED IN SECTION 6 T25N R12E AND SECTION 31 T26N R12E MDM COUNTY OF PLUMAS, STATE OF CALIFORNIA FOR THE PLUMAS NATIONAL FOREST. P.O. BOX 11500 QUINCY, CA. 95971.

SURVEY CREW
J.Knoettgen
B.Willard
D.Hobbs
J.Schmidt
H.Stokes

DRAWN BY S.Sasser

SHEET: 4 OF 4