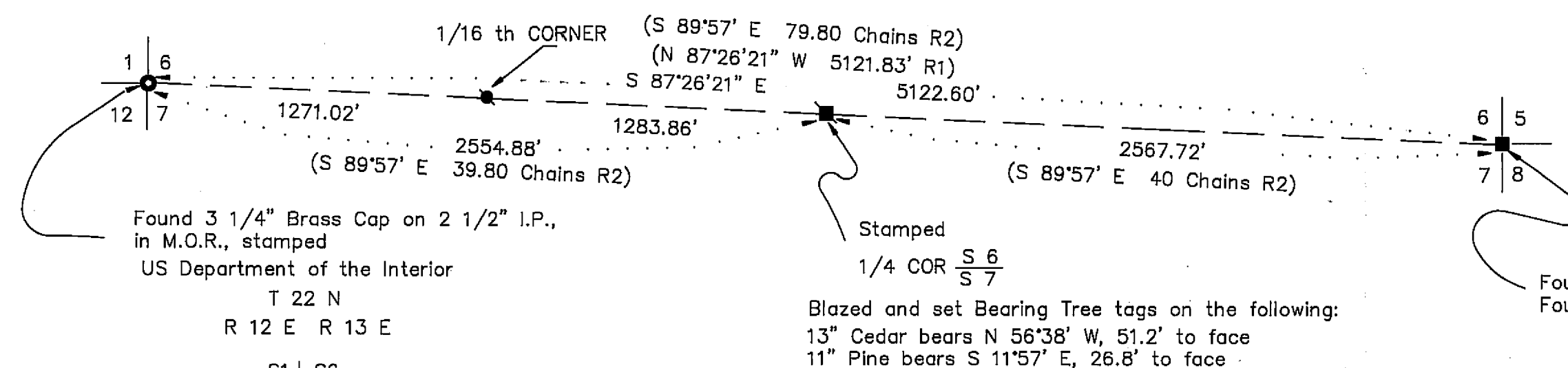
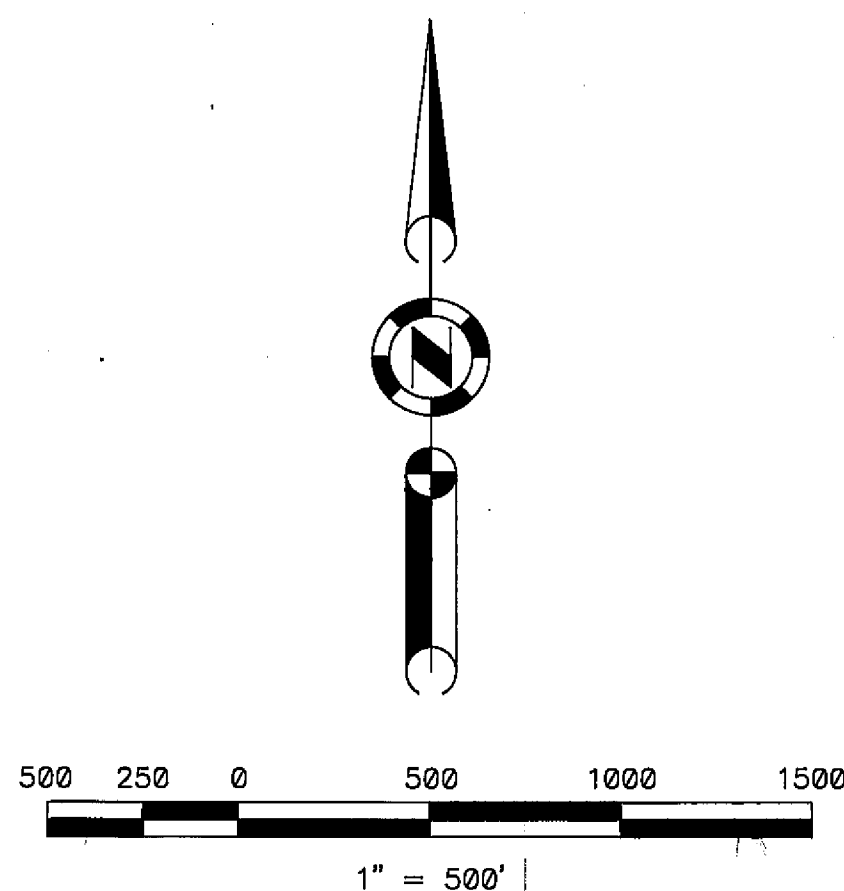


BASIS OF BEARINGS

Basis of bearings of this survey is the South line of Section 6 and North line of Section 7, shown as N 87°26'21" W in Book 4 of Parcel Maps at Page 29 Plumas County records.

NOTE: Searched line for topographic calls, but found nothing definite enough to establish 1/4 corner, so set 1/4 corner by single proportion.



Found 3 1/4" Brass Cap on 2 1/2" I.P.,
in M.O.R., stamped
US Department of the Interior
T 22 N
R 12 E R 13 E

S1 | S6
S12 | S7
1975

Bureau of Land Management

Found 14" blazed pine with Bearing Tree tag S 8°41' E, 35.0' to face
Found 22" blazed pine with Bearing Tree tag S 62°42' W, 21.8' to face
Found 16" blazed pine with Bearing Tree tag N 54°34' W, 19.6' to face

Blazed and set Bearing Tree tags on the following:
13" Cedar bears N 56°38' W, 51.2' to face
11" Pine bears S 11°57' E, 26.8' to face

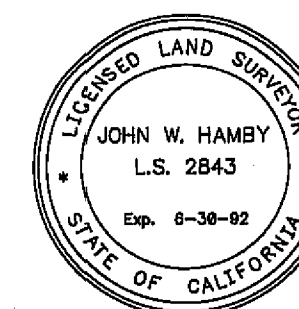
Found 32" blazed Pine with K-tag N 67°15' W, 187.2' to face
Found 12" blazed Pine S 64°43' W, 141.7' to face

LEGEND

- FOUND Point as described
- SET 5/8" Rebar with Aluminum Cap LS 2843 stamped as shown
- FOUND 1/2" I.P. LS 3297 in M.O.R. per 4 PM 29
- SET 5/8" Rebar with Aluminum Cap LS 2843
- (R1) RECORD per 4 PM 29
- (R2) RECORD per G.L.O.

SURVEYOR'S STATEMENT

This map correctly represents a survey made by me or under my direction in conformance with the requirements of the Land Surveyor's Act at the request of B. J. Pearson in April, 1990.



John W. Hamby
John W. Hamby L.S. 2843

COUNTY SURVEYOR'S STATEMENT

This map has been examined in accordance with Section 8766 of the Land Surveyor's Act this 19th day of June, 1990.

Lawrence J. Brock
Lawrence J. Brock R.C.E. 13528
Exp. 3-31-93

RECORDER'S STATEMENT

Filed this 19th day of JUNE, 1990, at 2:15 m. in Book B of Record of Surveys, at page 129, at the request of the County Engineer.

Fee 5.00

ILA DIGGS
County Recorder

File No. 3754

by *Beth Cammack*
Deputy

RECORD OF SURVEY for B. J. Pearson

The South line of Section 6
T. 22 N., R. 13 E., M.D.M.
Plumas County — California
Scale 1" = 500' April, 1990

Hamby Surveying Inc.
P.O. Box 1209
Portola, CA 96122
Ph. (916) 832-5571