

LEGEND

- ☒ FOUND A U.S.F.S. 3" DIAM. ALUMINUM CAPPED PIPE, LS 3761, 1985
- FOUND G-L-O ORIGINAL EVIDENCE AS NOTED, D.C. HALL, D.S. 1884, SET A U.S.F.S. 3" DIAM. ALUMINUM CAPPED PIPE, 30" LONG, MARKED PER B-L-M MANUAL, SEE TYPICAL CAP FOR STANDARD MARKINGS
- FOUND MINERAL SURVEY ORIGINAL EVIDENCE AS NOTED, WM. SCHULD, U.S.M.S., 1887, SET A U.S.F.S. 3" DIAM. ALUMINUM CAPPED PIPE, 30" LONG, SEE TYPICAL CAP FOR STANDARD MARKINGS
- ⊙ SET A U.S.F.S. 3" DIAM. ALUMINUM CAPPE PIPE, 30" LONG, MARKED PER B-L-M MANUAL, SEE TYPICAL CAP FOR STANDARD MARKINGS
- COMPUTED POINT, NOTHING SET
- [ ] RECORD BEARING AND/OR DISTANCE, G-L-O, 1884
- { } RECORD BEARING AND/OR DISTANCE, MS 2522, 1886
- < > RECORD BEARING AND/OR DISTANCE, LS 3761, 1985

NOTE

BASIS OF BEARING WAS A SOLAR OBSERVATION TAKEN NEAR THE NORTH 1/4 CORNER OF SECTION 23 ON 9/9/89.

THIS PLAT REPRESENTS A RECORD OF THE PARTIAL RETRACEMENT AND/OR SUBDIVISION OF SECTIONS 23 AND 34 AND THE PARTIAL RETRACEMENT OF MINERAL SURVEYS 2522 AND 2665. THE ORIGINAL SURVEY WAS EXECUTED BY D.C. HALL, DEPUTY SURVEYOR, IN 1884. THE MINERAL SURVEYS WERE EXECUTED BY WM. SCHULD, U.S. MINERAL SURVEYOR IN 1886 AND 1887. ALL ARE RECORDS OF THE BUREAU OF LAND MANAGMENT, SACRAMENTO, CALIFORNIA.

COUNTY SURVEYOR'S STATEMENT

THIS MAP HAS BEEN EXAMINED IN ACCORDANCE WITH SECTION 8766 OF THE LAND SURVEYOR'S ACT THIS 14<sup>TH</sup> DAY OF June, 1990

*Lawrence J. Brock* Exp 3/31/90  
LAWRENCE J. BROCK, R.C.E. 13528  
PLUMAS COUNTY SURVEYOR

RECORDER'S STATEMENT

FILE NO. \_\_\_\_\_ DAY OF June, 1990  
FILED THIS 14<sup>TH</sup> DAY OF June, 1990  
AT 9:16 O'CLOCK A.M., IN BOOK 2 OF RECORD OF SURVEYS  
AT PAGE 127 AT THE REQUEST OF THE COUNTY ENGINEER.

FEE \$ 7.00 No. 3626

BY *Julie Davis* ILA DIGGS  
DEPUTY COUNTY RECORDER COUNTY RECORDER

SURVEYOR'S STATEMENT

THIS PLAT CORRECTLY REPRESENTS A SURVEY MADE BY ME OR UNDER MY DIRECTION IN CONFORMANCE WITH THE REQUIREMENTS OF THE LAND SURVEYORS ACT, AT THE REQUEST OF THE FOREST SUPERVISOR, PLUMAS NATIONAL FOREST, DURING THE MONTH OF SEPTEMBER 1988.



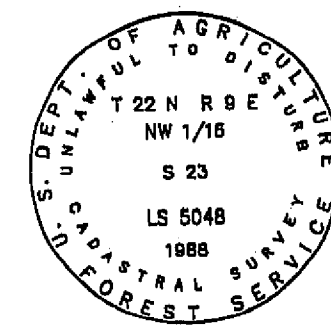
JOB NO. 1032-888-CA  
CONTRACT NO. 53-9A13-8-1K-36  
SHEET 1 OF 2

EXP. 6/30/90  
RONALD E. STOLL, R.L.S. 5048

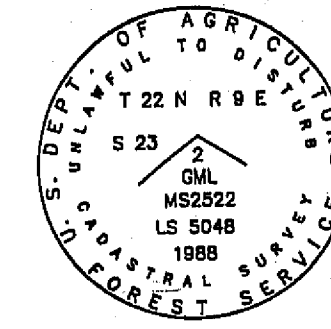
A PORTION OF  
M S 2522 AND SECTION 23  
T 22 N R 9 E M.D.M.  
IN THE UNINCORPORATED TERRITORY OF  
PLUMAS COUNTY, CALIFORNIA

RECORD OF SURVEY

RES LAND SURVEYS, INC. 8335 N. PLACITA DADIVOSO  
TUCSON, ARIZONA 85704

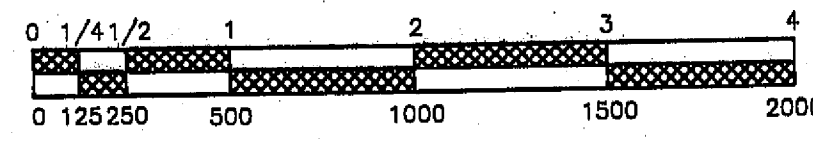


TYPICAL FOREST SERVICE CAP MARKED PER B-L-M MANUAL

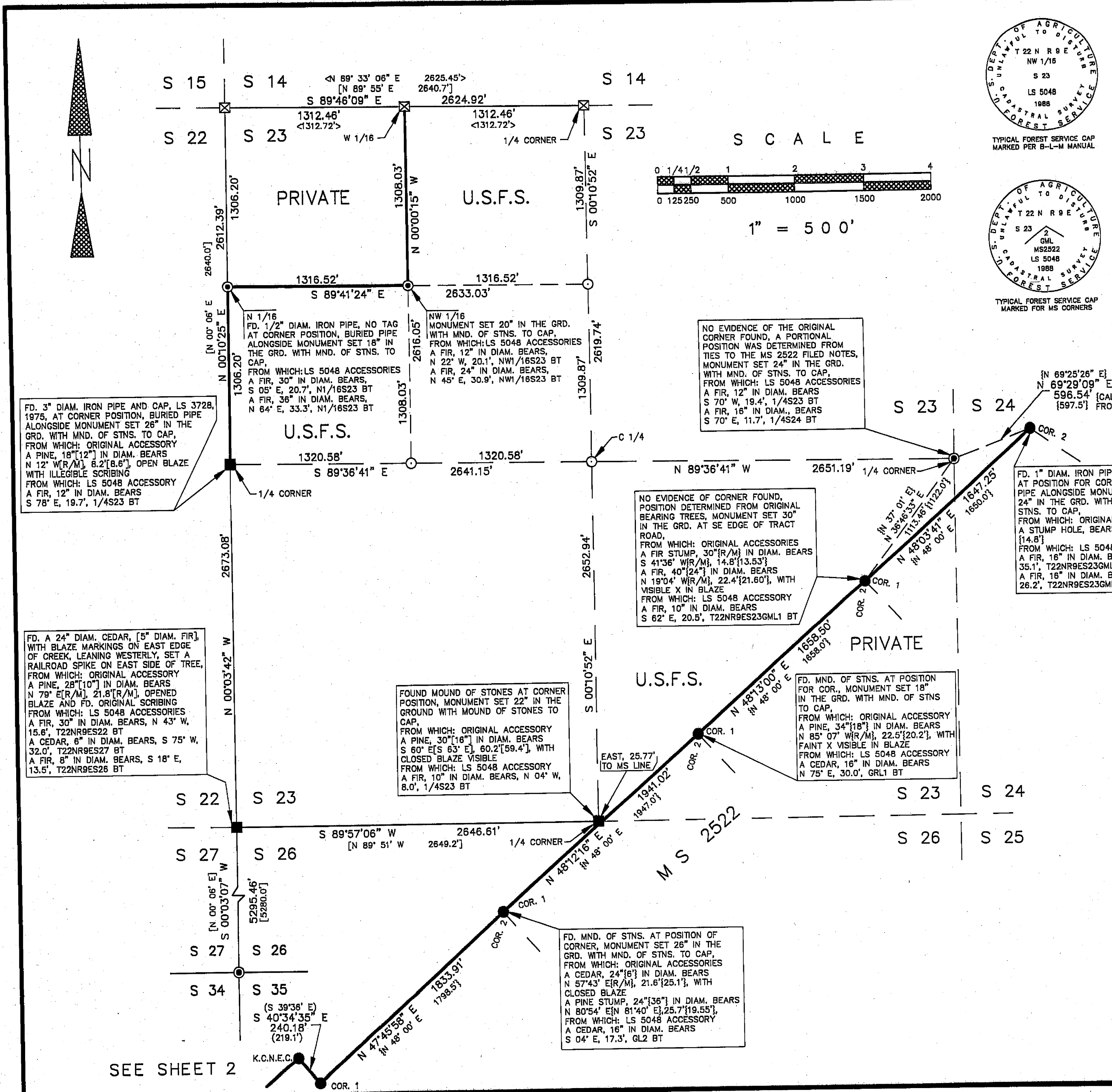


TYPICAL FOREST SERVICE CAP MARKED FOR MS CORNERS

SCALE



1" = 500'



FD. 3" DIAM. IRON PIPE AND CAP, LS 3728, 1975, AT CORNER POSITION, BURIED PIPE ALONGSIDE MONUMENT SET 26" IN THE GRD. WITH MND. OF STNS. TO CAP, FROM WHICH: ORIGINAL ACCESSORY A PINE, 18" [12"] IN DIAM. BEARS N 12° W [R/M], 8.2' [8.6'], OPEN BLAZE WITH ILLEGIBLE SCRIBING FROM WHICH: LS 5048 ACCESSORY A FIR, 12" IN DIAM. BEARS S 78° E, 19.7', 1/4S23 BT

NO EVIDENCE OF THE ORIGINAL CORNER FOUND, A PORTIONAL POSITION WAS DETERMINED FROM TIES TO THE MS 2522 FILED NOTES, MONUMENT SET 24" IN THE GRD. WITH MND. OF STNS. TO CAP, FROM WHICH: LS 5048 ACCESSORIES A FIR, 12" IN DIAM. BEARS S 70° W, 19.4', 1/4S23 BT A FIR, 16" IN DIAM., BEARS S 70° E, 11.7', 1/4S24 BT

NO EVIDENCE OF CORNER FOUND, POSITION DETERMINED FROM ORIGINAL BEARING TREES, MONUMENT SET 30" IN THE GRD. AT SE EDGE OF TRACT ROAD, FROM WHICH: ORIGINAL ACCESSORIES A FIR STUMP, 30" [R/M] IN DIAM. BEARS S 41° 36' W [R/M], 14.8' [13.53'] A FIR, 40" [24"] IN DIAM. BEARS N 19° 04' W [R/M], 22.4' [21.60'], WITH VISIBLE X IN BLAZE FROM WHICH: LS 5048 ACCESSORY A FIR, 10" IN DIAM. BEARS S 62° E, 20.5', T22NR9ES23GML1 BT

FD. 1" DIAM. IRON PIPE, NO TAG AT POSITION FOR CORNER, BURIED PIPE ALONGSIDE MONUMENT SET 24" IN THE GRD. WITH MND. OF STNS. TO CAP, FROM WHICH: ORIGINAL ACCESSORY A STUMP HOLE, BEARS [S 06° 33' W], [14.8'] FROM WHICH: LS 5048 ACCESSORIES A FIR, 16" IN DIAM. BEARS N 10° E, 35.1', T22NR9ES23GML2 BT A FIR, 16" IN DIAM. BEARS S 53° W, 26.2', T22NR9ES23GML2 BT

FOUND MOUND OF STONES AT CORNER POSITION, MONUMENT SET 22" IN THE GROUND WITH MOUND OF STONES TO CAP, FROM WHICH: ORIGINAL ACCESSORY A PINE, 30" [16"] IN DIAM. BEARS S 60° E [S 63° E], 60.2' [59.4'], WITH CLOSED BLAZE VISIBLE FROM WHICH: LS 5048 ACCESSORY A FIR, 10" IN DIAM. BEARS, N 04° W, 8.0', 1/4S23 BT

FD. MND. OF STNS. AT POSITION FOR COR., MONUMENT SET 18" IN THE GRD. WITH MND. OF STNS TO CAP, FROM WHICH: ORIGINAL ACCESSORY A PINE, 34" [18"] IN DIAM. BEARS N 85° 07' W [R/M], 22.5' [20.2'], WITH FAINT X VISIBLE IN BLAZE FROM WHICH: LS 5048 ACCESSORY A CEDAR, 16" IN DIAM. BEARS N 75° E, 30.0', GRL1 BT

FD. MND. OF STNS. AT POSITION OF CORNER, MONUMENT SET 26" IN THE GRD. WITH MND. OF STNS. TO CAP, FROM WHICH: ORIGINAL ACCESSORIES A CEDAR, 24" [16"] IN DIAM. BEARS N 57° 43' E [R/M], 21.6' [25.1'], WITH CLOSED BLAZE A PINE STUMP, 24" [36"] IN DIAM. BEARS N 80° 54' E [N 81° 40' E], 25.7' [19.55'], FROM WHICH: LS 5048 ACCESSORY A CEDAR, 16" IN DIAM. BEARS S 04° E, 17.3', GL2 BT

FD. A 24" DIAM. CEDAR, [5" DIAM. FIR], WITH BLAZE MARKINGS ON EAST EDGE OF CREEK, LEANING WESTERLY, SET A RAILROAD SPIKE ON EAST SIDE OF TREE, FROM WHICH: ORIGINAL ACCESSORY A PINE, 28" [10"] IN DIAM. BEARS N 79° E [R/M], 21.8' [R/M], OPENED BLAZE AND FD. ORIGINAL SCRIBING FROM WHICH: LS 5048 ACCESSORIES A FIR, 30" IN DIAM. BEARS, N 43° W, 15.6', T22NR9ES22 BT A CEDAR, 8" IN DIAM. BEARS, S 75° W, 32.0', T22NR9ES27 BT A FIR, 8" IN DIAM. BEARS, S 18° E, 13.5', T22NR9ES26 BT

SEE SHEET 2