

BASIS OF BEARINGS

The basis of bearings for this survey is the East line of the NW 1/4 of the SE 1/4 of Section 4, shown as N 00°15'06" E per 6 RS 106

Record Corner R2

1 3/4" O.D. I.P. with pipe cap tagged LS 1766
 40" X 60" S. Pine Snag W/ Scribing "VI...BT" visible Brs. N 7° W, 18.1' (32" S. Pine Brs. N 12° W, 23 Lks.)
 48" S. Pine Snag W/Face visible in Lightning scar Brs. S 21° E, 18.4' (28" S. Pine Brs. S. 10 1/2° E, 24 Lks.)
 26" Stump hole Brs. S 25° W, 39.1' (18" Fir Brs. S 31° W, 49 Lks.)

Scribed 14" Cedar bears S 08°45' E, 44.4'
 Scribed 14" Fir bears N 45°45' E, 21.7'

FOUND 3" ACAP stamped
 T 23 N R 10 E
 1/4 S 4 S 9
 1983 LS 4976

Record Corner R2

1 3/4" O.D. I.P. W/pipe cap tagged RE 2435 in M.O.R.
 Also Original Corner post with scribing "S IX IIII, S X, S III, S IV" on four sides, respectively (Set 48" X 5" X 5" Fir post marked with 5 notches on South and 3 on East and S 3 on NE and S 4 on NW, S 9 on SW and S 10 on SE face...)
 51" S. Pine W/scarred face Brs. S 65° E, 33.3' (24" S. Pine Brs. S 66° E, 47 Lks.)
 18" W. Fir snag 15' high W/face and scribing "S III..." visible Brs. N 44 1/2° E, 74.6' (12" Fir Brs. N 42° E, 112 Lks.)
 30" W. Fir W/scarred face Brs. N 62° W, 64.2' (13" Fir Brs. N 65° W, 97 Lks.)

Stamped
 NE 1/16 S 4 S 9
 1989
 LS 2843

Stamped
 NE 1/16 S 9
 1989
 LS 2843

Stamped
 N 1/16 S 9 S 10
 1989
 LS 2843

Found 3" ACAP Stamped
 T 23 N R 10 E
 1/4 S 9 S 10
 1984
 LS 5427

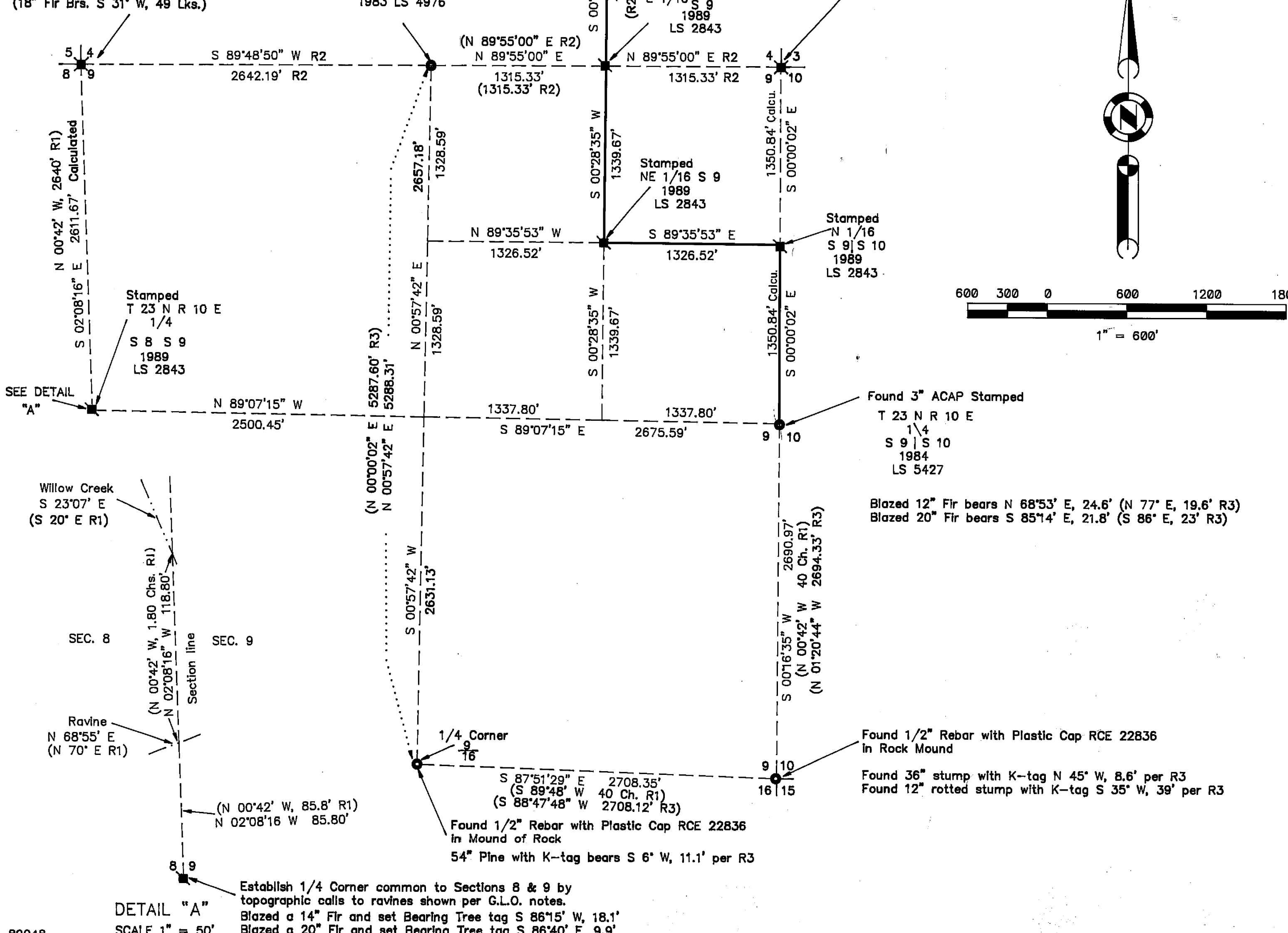
Blazed 12" Fir bears N 68°53' E, 24.6' (N 77° E, 19.6' R3)
 Blazed 20" Fir bears S 85°14' E, 21.8' (S 86° E, 23' R3)

Found 1/2" Rebar with Plastic Cap RCE 22836
 In Rock Mound

Found 36" stump with K-tag N 45° W, 8.6' per R3
 Found 12" rotted stump with K-tag S 35° W, 39' per R3

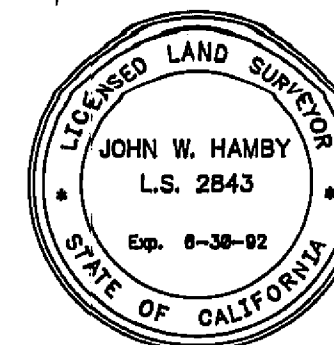
Found 1/2" Rebar with Plastic Cap RCE 22836
 in Mound of Rock
 54" Pine with K-tag bears S 6° W, 11.1' per R3

Establish 1/4 Corner common to Sections 8 & 9 by topographic calls to ravines shown per G.L.O. notes.
 Blazed a 14" Fir and set Bearing Tree tag S 86°15' W, 18.1'
 Blazed a 20" Fir and set Bearing Tree tag S 86°40' E, 9.9'



SURVEYOR'S STATEMENT

This map correctly represents a survey made by me or under my direction in conformance with the requirements of the Land Surveyor's Act at the request of Sierra Pacific Industries in October, 1989.



John W. Hamby
 John W. Hamby L.S. 2843

COUNTY SURVEYOR'S STATEMENT

This map has been examined in accordance with Section 8766 of the Land Surveyor's Act this 28th day of February, 1990.

Lawrence J. Brock
 Lawrence J. Brock R.C.E. 13528
 PLUMAS COUNTY SURVEYOR

COUNTY RECORDER'S STATEMENT

Filed this 28th day of February, 1990 at 9:50 A.M. in Book 8 of Record of Surveys, at page 117, at the request of the County Engineer.

Fee \$ 5.00
 File No. 858

Ila Diggs
 County Recorder
 By *Anna P. ...*
 Deputy

LEGEND

- FOUND Point as described
- SET 5/8" Rebar and Alum. Cap stamped as shown
- FOUND 1/2" Rebar and Alum. Cap stamped LS 4976
- RECORD corners per 6 RS 106
- (R1) RECORD per G.L.O. Notes
- (R2) RECORD per 6 RS 106
- (R3) RECORD per 6 RS 93

RECORD OF SURVEY

FOR
 Sierra Pacific Industries

Located in Sections 4 & 9, T. 23 N., R. 10 E., M.D.M.
 PLUMAS COUNTY - CALIFORNIA
 Scale 1" = 600' October, 1989

HAMBY SURVEYING, INC.
 P.O. Box 1209 ph.(916) 832-5571
 PORTOLA, CA. 96122