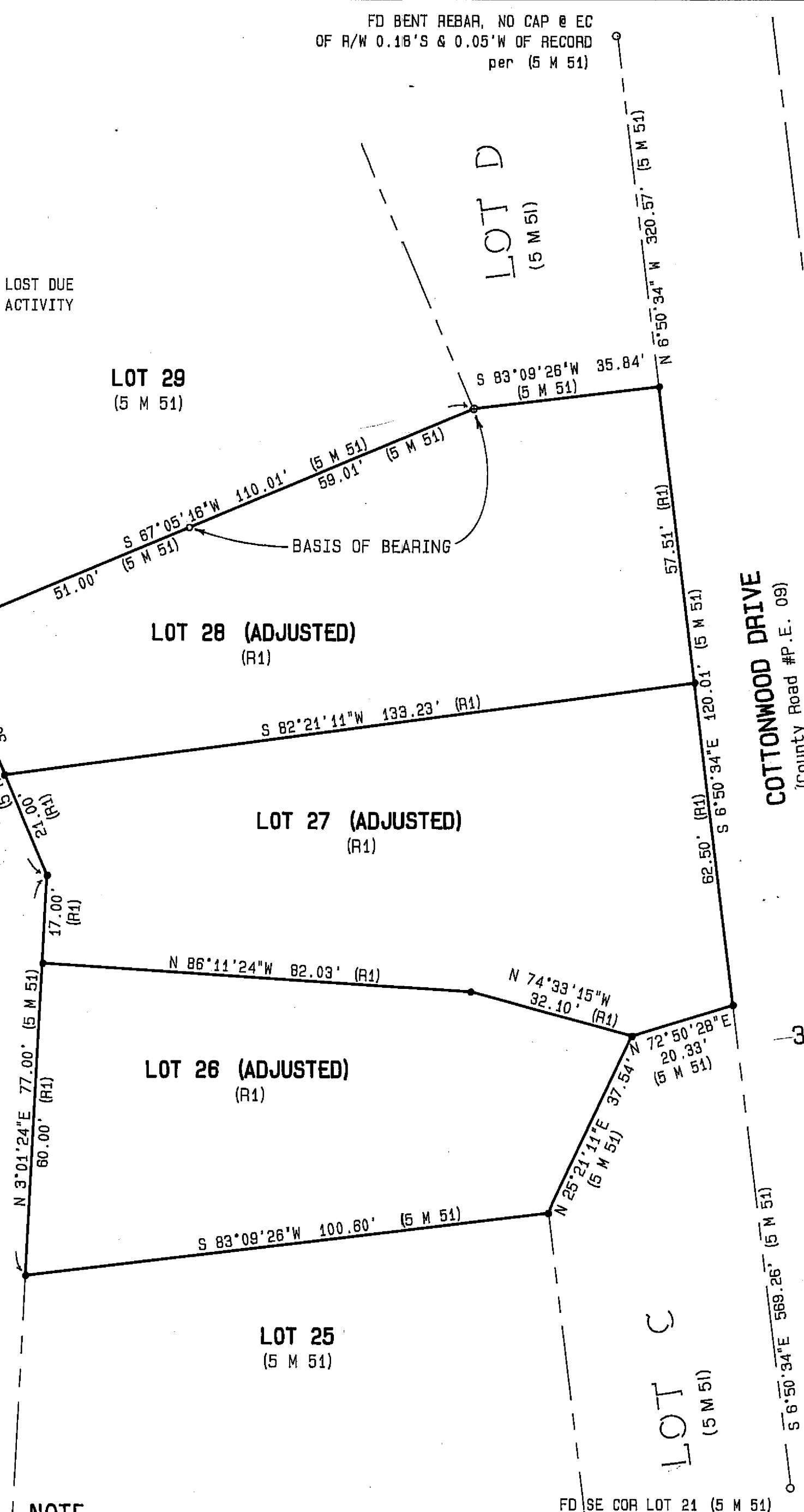


REAR CORNERS IN THIS AREA LOST DUE TO RECENT CONSTRUCTION ACTIVITY

PLUMAS PINES GOLF COURSE



NOTE

FD & ACCEPTED CORNERS CAPPED RCE 15265 ALONG WEST LINE OF LOTS 16 & 17 (5 M 51)

BASIS OF BEARING

ESTABLISHED FROM THE 2 FOUND REBAR W/ PLASTIC CAP STAMPED 15265 ALONG THE SOUTH LINE OF LOT 28 (5 M 51) TAKEN AS N 67°05'16"E AS INDICATED ABOVE.

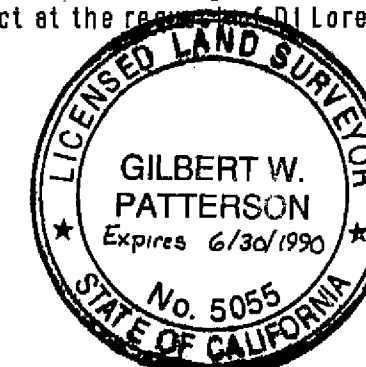
SCALE: 1" = 20'

north

SURVEYOR'S STATEMENT

This map correctly represents a survey made by me or under my direction in conformance with the requirements of the Land Surveyor's Act at the request of Di Loreto Construction and Development, Inc., in September, 1989.

Gilbert W. Patterson 9/25/89
 Gilbert W. Patterson L.S. 5055



COUNTY SURVEYOR'S STATEMENT

This map has been examined in accordance with Section 8766 of the Land Surveyor's Act this 8th day of January, 1990.

Lawrence J. Brock
 Lawrence J. Brock R.C.E. 13528
 Plumas County Surveyor

COUNTY RECORDER'S STATEMENT

Filed this 15th day of January, 1990 at 9:55 A.M. in Book 8 of Record of Surveys, at Page 114, at the request of the County Engineer.

Ila Diggs
 County Recorder

Fee \$5.00
 File No. 295

By *JoAnn Vanilder*
 Deputy

LEGEND

- (5 M 51) - PLUMAS EUREKA ESTATES UNIT No. 7 (PHASE 1) SHEET 2 of 2
- (R1) - LOT LINE ADJUSTMENT RESOLUTION FILED IN BOOK 575 OFFICIAL RECORDS AT PAGE 1
- SET 5/8" REBAR W/ PLASTIC CAP STAMPED LLS 5055
- FD 1/2" REBAR W/ PLASTIC CAP STAMPED RCE 15265 REPLACED W/ PLASTIC CAP STAMPED LLS 5055
- FD 1/2" REBAR W/ PLASTIC CAP STAMPED RCE 15265

RECORD OF SURVEY

for
 Di Loreto Construction and Development, Inc.
 Lot Line Adjustment of Lots 26, 27 & 28 of
 Plumas Eureka Estates Unit No. 7 (Phase 1) - 5 M 50

PORTION OF THE NORTHEAST 1/4 SECTION 8,
 Township 22 North, Range 12 East, M.D.B. & M.
 PLUMAS COUNTY, CALIFORNIA
 Scale 1" = 20' September, 1989

TRANSWESTERN ENGINEERING CORPORATION, INC.
 2408 Linden Street
 Reno, NV 89502
 (702) - 689-8610