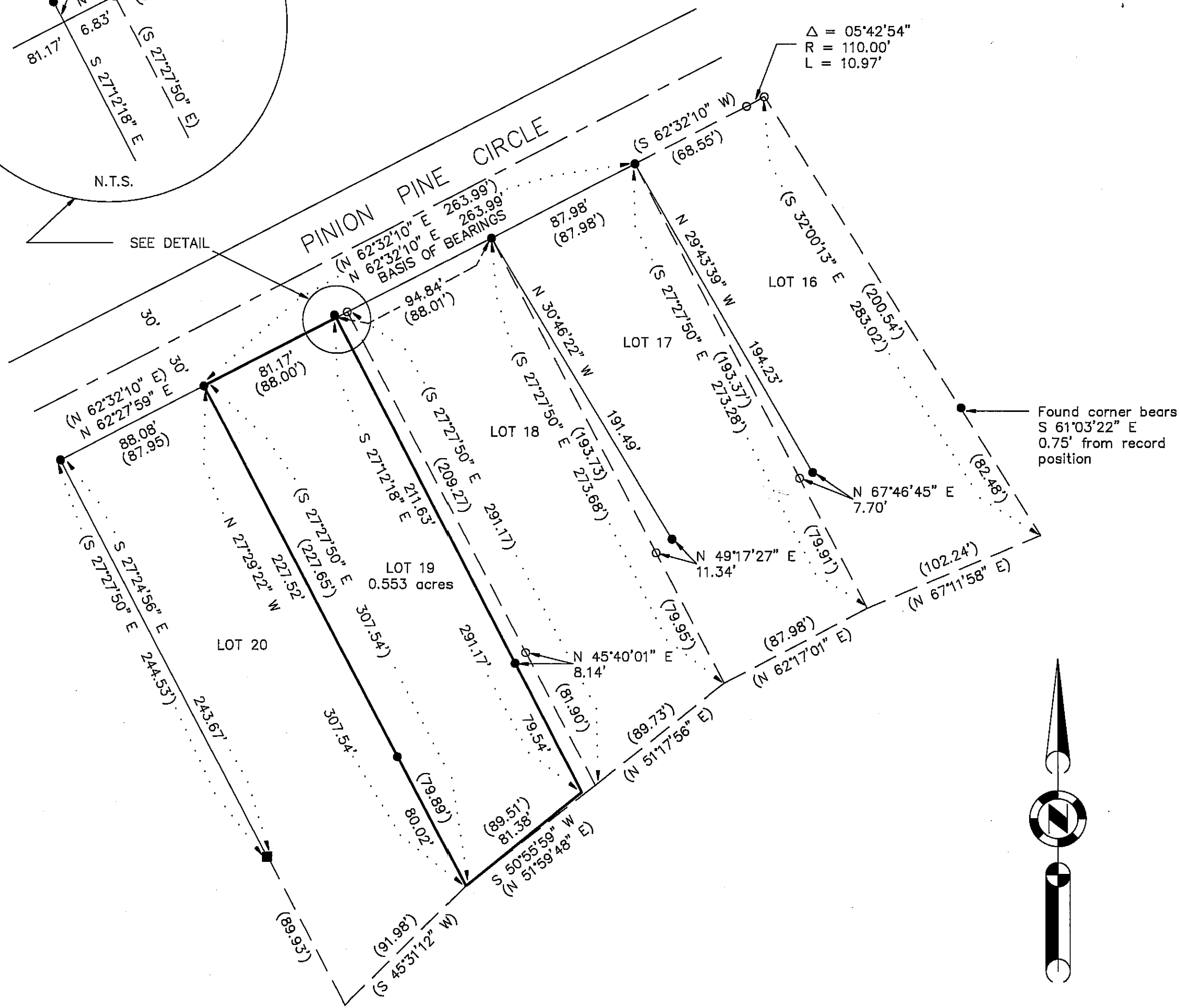
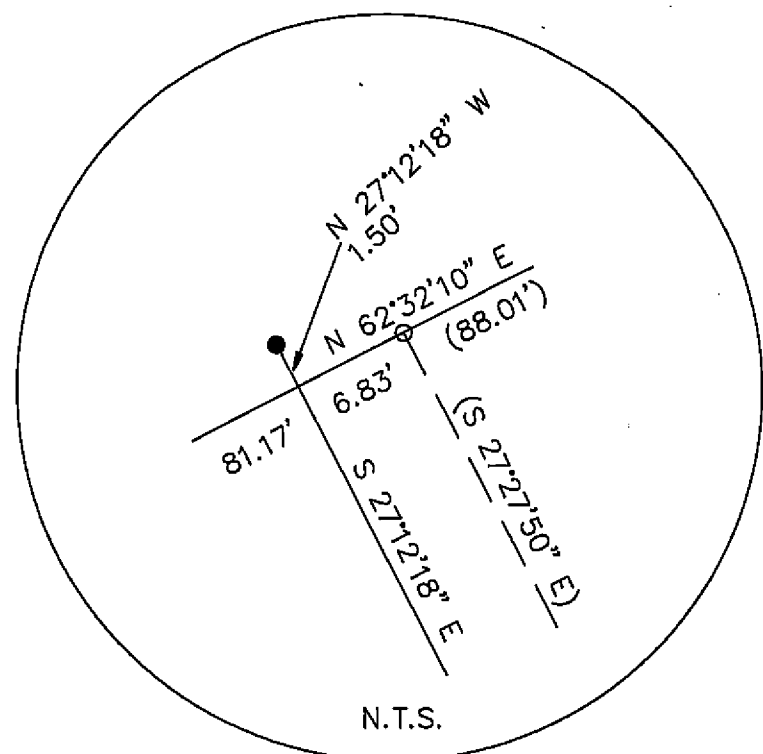


**BASIS OF BEARINGS**

The basis of bearings of this survey is from found monuments at the Northwest corner of Lot 19 and the Northeast corner of Lot 17 shown as N 62°32'10" E on 4 M 54, Plumas County.

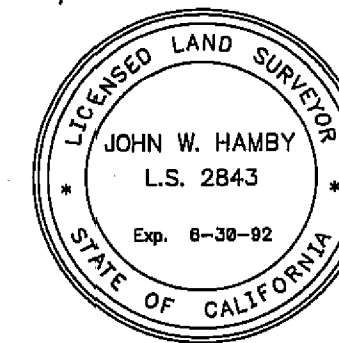


**LEGEND**

- FOUND 5/8" Rebar not tagged
- FOUND 1/2" Rebar not tagged
- RECORD positions of corners per 4 M 54
- ( ) RECORD per 4 M 54
- Lot lines as based on found monuments
- - Lot lines as shown on 4 M 54

**SURVEYOR'S STATEMENT**

This map correctly represents a survey made by me or under my direction in conformance with the requirements of the Land Surveyor's Act at the request of Edmond J. Vadnais in June, 1989.



*John W. Hamby*  
John W. Hamby L.S. 2843

**COUNTY SURVEYOR'S STATEMENT**

This map has been examined in accordance with Section 8766 of the Land Surveyor's Act this 20<sup>th</sup> day of November, 1989.

*Lawrence J. Brock*  
Lawrence J. Brock R.C.E. 13528  
PLUMAS COUNTY SURVEYOR

**COUNTY RECORDER'S STATEMENT**

Filed this 28<sup>th</sup> day of November, 1989 at 9:46 A.M. in Book 8 of Record of Surveys, at page 110, at the request of the County Engineer.

Ila Diggs  
County Recorder  
Fee \$ 500  
File No. 8446  
By *Bob Cammack*  
Deputy

The monuments found are not in the position indicated on 4 M 54, but have the appearance of being original monuments. They are of the character described on 4 M 54, except neither they, nor the other points found were tagged R.C.E. 292. The condition of the monuments and remains of guard stakes indicate several years in their present locations.

**RECORD OF SURVEY**

FOR  
Edmond J. Vadnais

LOT 19, PLUMAS-EUREKA ESTATES UNIT NO. 3  
A portion of Section 9, T. 22 N., R. 12 E., M.D.M.  
PLUMAS COUNTY - CALIFORNIA  
Scale 1" = 50' October, 1989

HAMBY SURVEYING, INC.  
P.O. Box 1209 ph.(916) 832-5571  
PORTOLA, CA. 96122