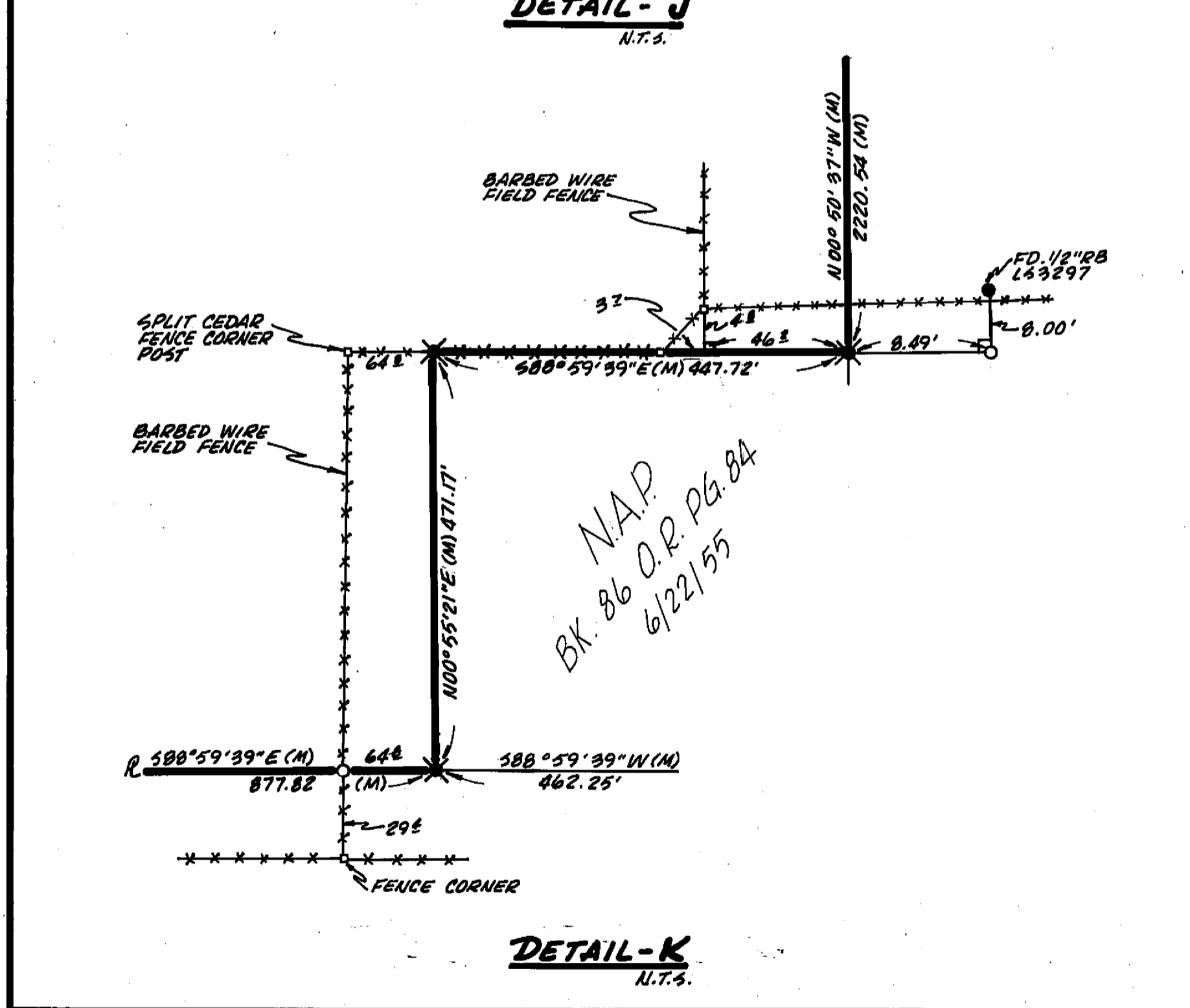
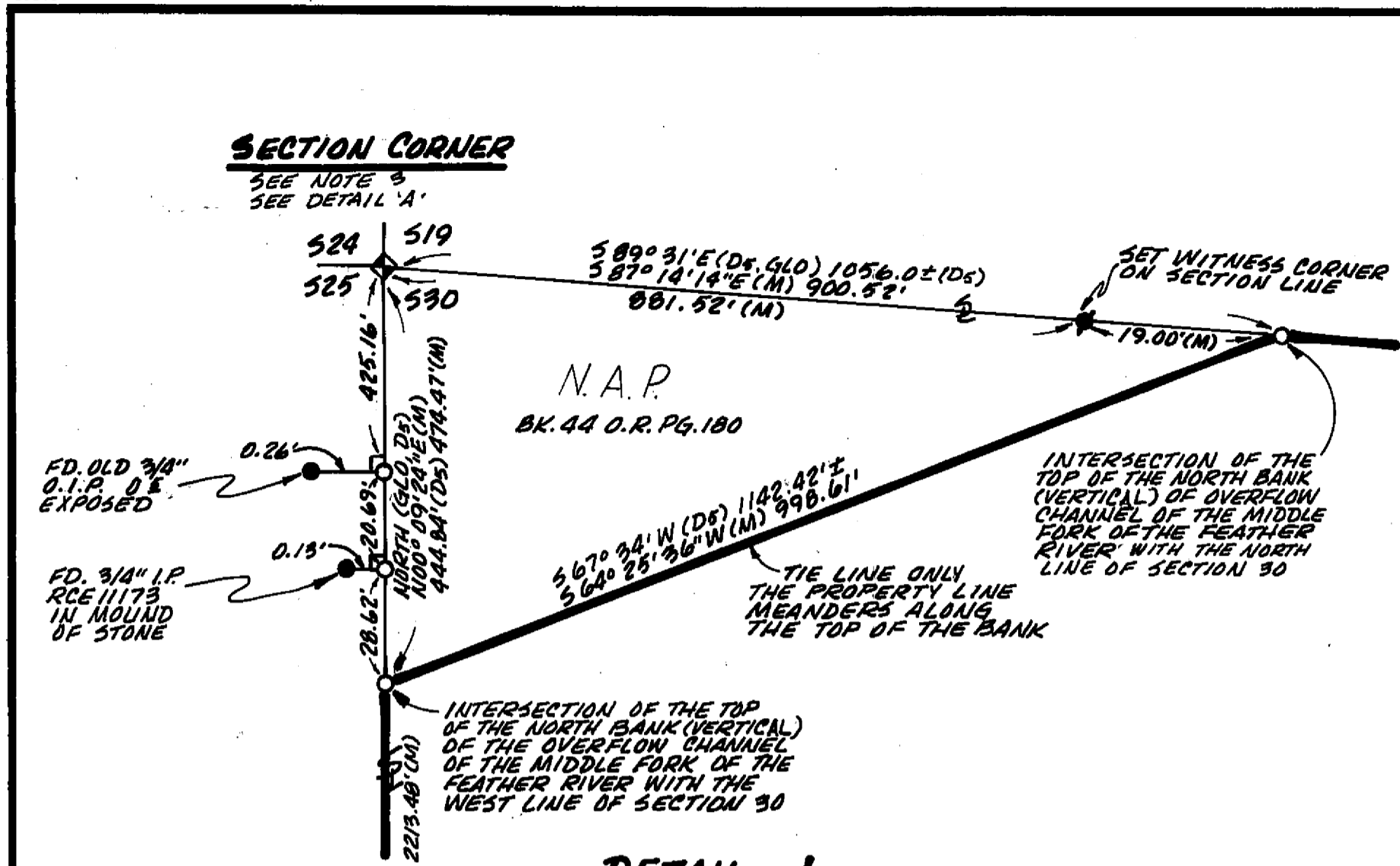
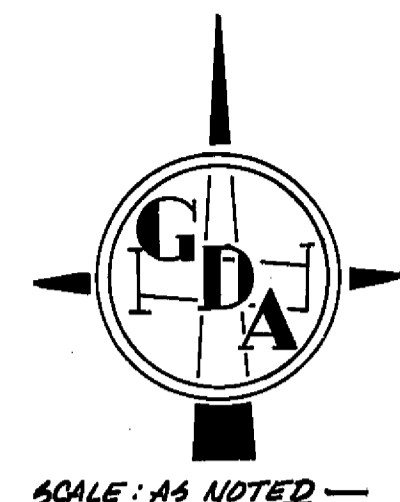


89810



NOTES:

- 1.) SE 1/4 CORNER - SECTION 30  
 FD. 1" BOLT WITH 2" SQ. HEAD PER (R, R<sub>1</sub>, R<sub>2</sub>, R<sub>3</sub>, R<sub>4</sub>, R<sub>5</sub>)  
 (GLO) - SET POST  
 42" PITCH PINE N 66° 14' E, 72 LKS  
 40" PITCH PINE S 48° 0' W, 86 LKS  
 1 FIND STUMP ± 30" OF ORIGINAL BT. BEARS S 48° 0' W, 89 LKS TO Q  
 1 SCRIBE 15" Y. PINE BEARS S 46° E, 128 LKS. & 17" Y. PINE BEARS S 61° 0' W, 65 LKS. SET STD. U.S.F.S. 3" ALUM. MONUMENT L54208, 1989
- 2.) N 1/4 CORNER - SECTION 30  
 (GLO) - SET 12" x 10" x 8" VOLCANIC STONE  
 4" FIR N 30° W, 45 LKS  
 16" PITCH PINE S 43° E, 128 LKS.  
 FD. 1/2" REBAR L53297 IN M.O.R. PER (R<sub>1</sub>, R<sub>2</sub>, R<sub>3</sub>) 9" x 12" x 10" LAVA STONE IN MOUND STUMP OF ORIGINAL BT. WITH SCRIBE HAVING BEEN A ± 40" Y. PINE BEARS S 46° E, 116 LKS.  
 SET STD. U.S.F.S. 3" ALUM. MONUMENT L54208 AND SCRIBE  
 14" Y. PINE N 53° W, 41 LKS  
 12" JUNIPER S 21° W, 34 LKS
- 3.) NW CORNER SECTION 30  
 (GLO) - SET POST  
 37" PITCH PINE N 49° 1/2' W, 74 LKS  
 33" PITCH PINE S 86° 1/2' W, 106 LKS  
 45" PITCH PINE S 83° 1/2' E, 81 LKS  
 FD. 1 3/4" I.D. OPEN STEAM TUBE 2" O.D. IN M.O.R. ± 24" DIA. ± 48" Y.P. CUT STUMP WITH "BT" SCRIBE VISIBLE, N 49° W, 74 LKS TO FACE, ± 36" Y.P. CUT STUMP S 86° W, 112 LKS TO APPROX. FACE (ORIGINAL BT). ± 36" Y.P. CUT STUMP S 84° E 72 LKS TO APPROX. FACE (ORIGINAL BT). 3/4" B.L.M. BRASS CAP N 20° W 4.65 FT. 13" Y.P. WITH HEALED FACE N 20° E, 29 LKS. (B.L.M. BT) 15" Y.P. WITH HEALED FACE S 31° E, 27 LKS. (B.L.M. BT) 15" Y.P. WITH HEALED FACE S 81° W, 41 LKS. (B.L.M. BT) SET STD. 3" U.S.F.S. ALUM. MONUMENT, L54208, 1989
- 4.) NE CORNER SECTION 30  
 (GLO) - SET 12" x 10" x 4" VOLCANIC STONE  
 20" PITCH PINE S 55° E, 20 LKS.  
 48" PITCH PINE N 10° E, 126 LKS.  
 FD. HUB AND TACK AT CENTER OF M.O.R., FD. 6" x 12" x 12" LAVA STONE WITH 2 GROOVES AND 5 GROOVES.  
 ORIGINAL BT: A 56" Y.P. STUMP WITH SCRIBE BEARS N 11° E, 126 LKS TO SCRIBED FACE.  
 1 SET 3" U.S.F.S. STD. ALUM. MONUMENT L54208 AND SCRIBE  
 10" JUNIPER, S 54° E, 46 LKS.  
 22" Y. PINE, S 26° W, 40 LKS.  
 16" Y. PINE, N 38° W, 37 LKS.  
 16" Y. PINE, N 39° E, 17 LKS.
- 5.) E 1/4 CORNER SECTION 30  
 (GLO) - SET 24" x 16" x 12" STONE  
 6" JUNIPER S 85° W, 20 LKS.  
 40" Y. PINE S 80° 1/4' E, 110 LKS.  
 FD. STD. 3/4" B.L.M. BRASS MONUMENT IN M.O.R.  
 ORIGINAL BT: 45" Y.P. 571° E, 112 LKS TO Q (UNOPENED)  
 ORIGINAL BT: 15" JUNIPER S 68° W, 22 LKS, OPEN SCRIBE NEW B.L.M. BT, 14" JUNIPER N 75° W, 25 LKS TO Q
- 6.) W 1/4 CORNER - SECTION 30  
 (GLO, GLO<sub>2</sub>) - SET POST  
 30" PITCH PINE N 88° 1/2' E, 44 LKS.  
 37" PITCH PINE S 85° 1/2' W, 102 LKS.  
 FD. 1/2" REBAR (TAG UNREADABLE), INSIDE 1 1/2" O.I.P. PER (R<sub>1</sub>, R<sub>2</sub>)  
 1 FIND NO EVIDENCE OF THE ORIGINAL CORNER OR THE ACCESSORIES THERE TO.  
 1 ACCEPT THE FOUND MONUMENT AS BEST EVIDENCE (SEE R<sub>1</sub>, R<sub>2</sub>) AND SET A 3" U.S.F.S. ALUM. MONUMENT, L54208 AND SCRIBE  
 14" Y. PINE N 58° E, 178 LKS  
 14" Y. PINE N 34° W, 29 LKS
- 7.) S 1/4 CORNER - SECTION 25  
 (GLO) - SET POST  
 35" PITCH PINE S 71° W, 73 LKS  
 37" PITCH PINE N 91° 20' E, 90 LKS  
 FD. 1 1/4" I.P. WITH 1/2" REBAR AND UNREADABLE PLASTIC CAP DRIVEN INSIDE THE I.P. (SEE R<sub>6</sub>) AT NW BASE OF FENCE CORNER POST IN SMALL M.O.R. ± 30" CUT STUMP, ROTTED, N 06° E, 90 LKS TO ± FACE; STUMP HOLE S 71° W, ± 73 LKS TO EDGE OF HOLE  
 SET K-TAG ON 22" Y. PINE N 70° W, 123 LKS.
- 8.) W 1/4 CORNER - SECTION 25  
 (GLO<sub>2</sub>) 32.32 CHS 32" PITCH PINE 40.00 CHS 1/4 COR. SET POST 41.15 CHS MOHAWK CREEK BEARS N 10° E  
 FD. 2" I.P. WITH 3/4" I.P. DRIVEN INSIDE UNREADABLE PLASTIC CAP (SEE R<sub>6</sub>) AT 1.15 CHS NORTH OF CORNER MOHAWK CREEK BEARS N 10° E; AT 7.71 CHS SOUTH OF CORNER, 1 FIND STUMP OF 148" Y. PINE
- 9.) N 1/4 CORNER - SECTION 25  
 FOUND NO EVIDENCE OF THE ORIGINAL CORNER OR ITS ACCESSORIES. 1 ACCEPT THE FOUND 3/4" I.P. L52846 PER (R<sub>5</sub>, R<sub>6</sub>) FOR THIS CORNER LOCATION.
- 10.) WIRED L54208 TAG TO MONUMENT.



# RECORD OF SURVEY

THE SE 1/4 NE 1/4 AND A PORTION OF THE E 1/2 SE 1/4, SEC. 25, T22N, R12E, M.D.M. AND THE SW 1/4 NE 1/4 AND A PORTION OF THE SW 1/4, SEC. 30, T22N, R12E, M.D.M., UNINCORPORATED AREA OF PLUMAS CO., CALIFORNIA FOR JOHN T. HARRIS, TRUSTEE

**SURVEYORS STATEMENT**  
 THIS MAP CORRECTLY REPRESENTS A SURVEY MADE BY ME OR UNDER MY DIRECTION IN CONFORMANCE WITH THE REQUIREMENTS OF THE LAND SURVEYORS ACT AT THE REQUEST OF JOHN T. HARRIS, TRUSTEE  
 IN \_\_\_\_\_ 198\_\_  
 JOHN D. CHRISTOFFERSON L.S. 4208

**COUNTY SURVEYORS STATEMENT**  
 THIS MAP HAS BEEN EXAMINED IN ACCORDANCE WITH SECTION 8766 OF THE LAND SURVEYORS ACT THIS \_\_\_\_\_ DAY OF \_\_\_\_\_, 198\_\_  
 COUNTY SURVEYOR

**RECORDERS**  
 FILED THIS \_\_\_\_\_ DAY OF \_\_\_\_\_, 198\_\_, AT \_\_\_\_\_ M.  
 IN BOOK \_\_\_\_\_ OF MAPS AT PAGE \_\_\_\_\_, AT THE REQUEST OF \_\_\_\_\_  
 SERIAL NO. \_\_\_\_\_  
 COUNTY RECORDER  
 BY DEPUTY \_\_\_\_\_

ENGINEERING SURVEYING PLANNING  
 220 GRAND AVE.  
 OROVILLE, CALIF. 95965  
 (916) 533-2068

SHEET 3 OF 3

EXP 6/30/92

88-106